

Commonwealth of Massachusetts  
Board of Library Commissioners

98 N. Washington Street • Boston, Massachusetts 02114  
617 725-1860 • 800 952-7403 (in-state only) • Fax 617 725-0140

# Massachusetts Public Library Data

## Children's & Young Adult Services 2009 Data

Compiled: December 2009  
Distributed: February 2010

## Introduction

The **Children's & Young Adult Services Report, 2009 Data**, presents information collected from 365 (99%) public libraries in Massachusetts on the Annual Report Information Survey (ARIS). Holdings data is as of 6/30/09. Circulation and programming data is for FY2009 (7/1/08 - 6/30/09). Salary and staffing data is as of 7/1/09. Please note that this year's report contains a change from previous years' reports in that it contains expanded information about Young Adults. Hence the inclusion of "Young Adult" in its title.

The *Standards for Public Library Service to Children in Massachusetts* (1995), by the Massachusetts Library Association, Children's Issues Section, defines as "Children's Services", the following basic services to library patrons that include children from infancy to young adulthood, parents and caregivers, adults working with children, and agencies/organizations serving children, students of children's literature, writers, artists & craftspeople, adults developing language skills, and adults needing basic subject material: develop and maintain a collection; provide reference; provide reader's assistance; provide programs to promote the objectives of the department; provide outreach activities, such as school and day care visits, homebound delivery and deposit collections; provide access to children's materials and services through catalogs, interlibrary loan, and electronic technology; represent the library to the community and improve existing services through the evaluation of use and effectiveness of current services.

The *Children's Services Report* provides information about what are probably the most valued and well-known services of public libraries, those to children. The information may be used to describe facets of library services, support long-range and budget planning, strengthen service evaluation, and advance informed decision-making. Users will need to interpret this data in the context of the service roles adopted by the library and its mission statement.

This report reflects considerable effort on the part of library directors and staff members. Their work is greatly appreciated and contributes to planning library services and development at the local, state and national levels.

Dianne Carty, Head, Data, Technology,  
Construction, & State Aid  
Ann Downey, Systems Analyst  
Ned Richards, State Aid Specialist  
Uechi Ng, Administrative Assistant

Robert C. Maier, Director  
Massachusetts Board of Library Commissioners  
98 North Washington Street  
Boston, MA 02114  
1-800-952-7403, 617-725-2860, fax 617-725-0140  
[www.mass.gov/mblc](http://www.mass.gov/mblc)

Compiled: December 2009  
Distributed: February 2010

# Children's & Young Adult Services Report 2009 Data

## Table of Contents

<b>Summary</b> .....	1
<b>Holdings, Circulation, Services and Staffing for Children:</b>	
Library Population Group 1 (0 - 1,999) .....	3
Library Population Group 2 (2,000 - 4,999) .....	6
Library Population Group 3 (5,000 - 9,999) .....	9
Library Population Group 4 (10,000 - 14,999) .....	12
Library Population Group 5 (15,000 - 24,999) .....	15
Library Population Group 6 (25,000 - 49,999) .....	18
Library Population Group 7 (50,000 - 99,999) .....	20
Library Population Group 8 (100,000 and over) .....	21

**Holdings, Circulation, Services and Staffing for Young Adults:**

Library Population Group 1 (0 - 1,999) . . . . . 22

Library Population Group 2 (2,000 - 4,999) . . . . . 25

Library Population Group 3 (5,000 - 9,999) . . . . . 28

Library Population Group 4 (10,000 - 14,999) . . . . . 31

Library Population Group 5 (15,000 - 24,999) . . . . . 34

Library Population Group 6 (25,000 - 49,999) . . . . . 36

Library Population Group 7 (50,000 - 99,999) . . . . . 39

Library Population Group 8 (100,000 and over) . . . . . 40

Appendix - Definitions for Data . . . . . 41

Index . . . . . 44

**Public Library Children's and Young Adult Services Report, FY2009 - Summary**

<b>Staff Librarian Positions</b>						
<b>Year</b>	<b>Children's Librarian</b>			<b>Young Adults' Librarian</b>		
	<b>FTE</b>	<b>Number of</b>	<b>No. w/MLS</b>	<b>FTE</b>	<b>Number of</b>	<b>No. w/MLS</b>
<b>FY2000</b>	286.2	346	145	40.2	49	30
<b>FY2001</b>	299.8	358	154	45.7	53	31
<b>FY2002</b>	300.0	358	150	50.2	58	42
<b>FY2003</b>	300.3	356	153	48.7	58	38
<b>FY2004</b>	295.7	349	159	44.0	52	32
<b>FY2005</b>	297.2	349	163	46.1	55	33
<b>FY2006</b>	297.4	343	164	56.7	66	39
<b>FY2007</b>	298.0	350	171	57.0	70	40
<b>FY2008</b>	301.6	363	181	57.3	73	42
<b>FY2009</b>	292.2	350	170	60.5	75	42

<b>Children's Holdings, Circulation and Programs</b>						
<b>Year</b>	<b>Children's Holdings</b>	<b>as % of Total Holdings</b>	<b>Children's Circulation</b>	<b>as % of Total Circulation</b>	<b>Children's Programs</b>	
					<b>Number</b>	<b>Attendance</b>
<b>FY2000</b>	7,585,778	24.04%	17,711,839	38.98%	60,689	1,370,897
<b>FY2001</b>	7,790,628	24.36%	17,863,676	38.90%	61,681	1,399,770
<b>FY2002</b>	8,069,487	24.84%	18,698,492	38.58%	64,366	1,437,641
<b>FY2003</b>	8,174,577	24.70%	18,631,553	38.03%	63,222	1,375,834
<b>FY2004</b>	8,345,161	25.16%	18,387,282	37.38%	62,545	1,390,483
<b>FY2005</b>	8,644,134	25.25%	18,380,397	36.79%	63,516	1,410,324
<b>FY2006</b>	8,741,283	24.89%	18,440,108	36.14%	63,538	1,430,536
<b>FY2007</b>	8,878,034	20.28%	18,532,504	34.83%	67,728	1,476,144
<b>FY2008</b>	9,097,779	25.22%	19,165,437	34.83%	65,304	1,510,634
<b>FY2009</b>	9,141,524	25.08%	20,390,418	34.78%	63,492	1,490,979

Holdings and circulations data in this chart include data only from libraries that are able to report children's and adult items separately. Holdings figures do not include microforms.

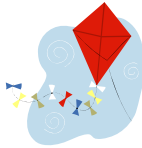
# Public Library Children's and Young Adult Services Report, FY2009 - Summary

## Children's Library Facilities as of June 30, 2009



962 computers in children's rooms/areas provide access to the Internet.  
46 libraries reported they had a homework center.

## Children's Services during FY2009



An average of 23.5 people attended each children's program held.

Children's programs accounted for 62.8% of all programs held.

30,061 hours were spent by all library staff to provide services to children.  
11,166 of those hours were spent by librarians holding MLS degrees.



352 libraries held summer reading programs. Average participation at each library was 351.6. The median number of participants was 210.

## Young Adult Facilities & Services during FY2009

261 libraries included a separate room or area for young adults.

Young adult programs accounted for 8.07% of all programs held.

346 libraries' holdings included a distinct collection for young adults.

115 libraries sponsored a young adult advisory group.



## Children's and Young Adult Services and Facilities by Library Population Group

Library Population Groups	Average # of Children's Programs in FY2008	Children's % of All Programs Held	Summer Reading Programs	Average # Participants in Summer Reading	Median # Participants in Summer Reading	Average # PC's w/Internet in Chil.Rms	Homework Center	Average # of YA Programs in FY2008	YA % of All Programs Held	Total Reporting
1 ( 0 - 1,999 )	32	69.3%	55	43	35	0.7	6	1	2.0%	65
2 ( 2,000 - 4,999)	85	57.6%	53	108	78	1.1	4	8	6.4%	53
3 ( 5,000 - 9,999)	158	67.2%	70	343	211	2.0	16	16	6.7%	70
4 (10,000 - 14,999)	189	64.5%	51	369	282	3.1	7	25	8.5%	52
5 (15,000 - 24,999)	206	68.6%	56	519	397	2.8	6	24	8.2%	56
6 (25,000 - 49,999)	252	61.7%	43	557	498	4.6	4	37	9.1%	44
7 (50,000 - 99,999)	346	63.9%	19	521	485	7.5	1	28	5.1%	20
8 ( 100,000 + )	1,325	50.35%	5	1,813	1,078	9.8	2	327	12.4%	5

**Public Library Children's and Young Adult Services Report, FY2009 - Holdings, Circulation, Services and Staffing for Children**

Municipality/Library	2008 Pop	2000 Pop % under 5 Yrs	2000 Pop % under 15 Yrs	Reg	Children's Materials				Programming for Children				Internet PC's in Children's Room	Home-work Center	Staff Librarian: Children's				All Staff Serving Ch.	
					Holdings		Circulation		# Progs	Attendance	Summer Reading				Min. Hourly Wage	Max. Hourly Wage	FTE	MLS	FTE	MLS
					Total	as % of Total	Total	as % of Total			Y/N	# Partic.								

<b>Population Group 1 ( 0 - 1,999 )</b>																				
Acton - W. Acton	1,248	7.4%	25.2%	M	NC		7,940	51.2%	133	2,500	N		0	N					0.3	0.1
Alford	392	3.0%	16.8%	W	958	100.0%	NC		1	1	N		0	N					0.1	
Aquinnah	357	5.8%	20.4%	S	2,632	27.0%	2,832	23.3%	46	275	Y	34	0	N					0.1	
Ashfield	1,822	5.3%	19.8%	W	120	0.7%	NC		0	0	Y		0	N					0.6	
Becket	1,801	5.0%	19.5%	W	4,340	31.5%	3,670	25.5%	45	532	Y	28	0	N					0.4	
Blandford	1,270	5.7%	19.0%	W	NC		2,589	28.5%	20	197	Y	19	0	N	8.00	8.00	0.1		0.1	
Buckland	1,989	4.9%	18.9%	W	4,928	51.6%	5,400	23.9%	8	376	Y	105	1	N					0.2	
Charlemont	1,378	5.0%	21.4%	W	6,670	43.6%	6,155	53.0%	27	830	Y	78	0	N					0.3	
Chatham - South	670	2.9%	10.3%	S	200	4.3%	79	2.3%	0	0	N		0	N						
Chester	1,287	5.5%	20.0%	W	4,208	54.6%	1,790	23.8%	5	82	Y	8	0	N					0.1	
Chesterfield	1,288	6.2%	20.4%	W	4,866	43.2%	3,803	35.6%	58	830	Y	56	0	N					0.1	
Chilmark	971	4.6%	17.1%	S	9,685	29.5%	17,250	25.5%	164	3,081	Y		1	N					0.9	0.1
Clarksburg	1,619	4.3%	18.9%	W	5,121	34.4%	7,587	34.3%	231	4,131	Y	20	6	Y	11.89	11.89	0.3		1.1	
Colrain	1,879	6.4%	22.3%	W	4,464	32.3%	3,942	24.2%	40	746	Y	55	1	N					0.1	
Conway	1,896	4.6%	20.0%	W	1,505	11.3%	2,922	22.1%	1	26	Y	22	0	N					0.2	
Cummington	964	3.7%	14.5%	W	2,507	25.1%	838	21.9%	1	8	Y	8	0	N					0.3	
Egremont	1,351	3.4%	14.4%	W	1,177	16.1%	1,186	17.4%	13	260	N		1	N					0.2	
Erving	1,552	5.4%	18.1%	W	2,416	32.9%	3,049	28.3%	7	357	Y	67	0	N					0.3	0.3
Florida	675	4.6%	20.1%	W	7,301	63.5%	9,113	48.2%	0	0	Y		0	N					0.3	
Gill	1,388	4.6%	19.4%	W	NC		2,281	47.1%	20	304	Y	42	0	N					0.4	

**Public Library Children's and Young Adult Services Report, FY2009 - Holdings, Circulation, Services and Staffing for Children**

Municipality/Library	2008 Pop	2000 Pop % under 5 Yrs	2000 Pop % under 15 Yrs	Reg	Children's Materials				Programming for Children				Internet PC's in Children's Room	Home-work Center	Staff Librarian: Children's				All Staff Serving Ch.	
					Holdings		Circulation		# Progs	Attendance	Summer Reading				Min. Hourly Wage	Max. Hourly Wage	FTE	MLS	FTE	MLS
					Total	as % of Total	Total	as % of Total			Y/N	# Partic.								
Goshen	974	4.6%	16.6%	W	2,111	28.3%	1,234	59.6%	1	25	N		0	N					0.1	
Gosnold	83	5.8%	16.3%	S	3,913	38.1%	814	39.0%	12	60	N		0	N					0.1	
Granville	1,686	6.3%	22.8%	W	3,142	37.0%	3,738	38.9%	46	653	Y	58	0	N					0.1	
Hancock	1,112	6.8%	21.6%	W																
Hardwick - Gilbertville	1,325	5.3%	22.2%	W	2,989	24.4%	1,415	18.3%	17	290	Y	20	2	N					0.3	
Hardwick - Paige Memorial	1,854	5.3%	22.2%	W	4,112	36.6%	3,674	38.0%	38	804	Y	59	0	N					0.3	
Harwich - Chase	615	4.1%	15.0%	S	975	5.2%	704	9.4%	7	125	Y	82	0	N					0.3	
Harwich - Port	1,230	4.1%	15.0%	S	1,057	5.9%	910	10.5%	2	20	Y	50	0	N					0.4	
Heath	798	5.2%	22.1%	W	1,734	13.4%	1,631	10.8%	19	199	Y	46	0	N					0.1	
Hinsdale	1,913	5.8%	21.5%	W	2,199	24.6%	1,907	22.9%	16	226	Y	43	1	Y					0.7	
Leverett	1,772	4.2%	18.4%	W	6,531	35.2%	10,895	29.7%	67	NC	Y	28	2	N					0.1	0.1
Leyden	801	5.1%	22.0%	W	2,850	55.7%	2,416	37.7%	4	166	Y	60	0	N					0.1	
Middlefield	557	5.2%	18.3%	W	1,190	22.4%	970	44.1%	1	13	Y	13	0	N					0.1	
Monroe	96	5.4%	19.4%	W																
Monterey	950	4.0%	13.7%	W	3,073	28.3%	2,133	15.9%	36	443	Y	32	1	N						
Montgomery	720	4.4%	18.4%	W	2,236	31.5%	977	21.1%	10	119	Y	119	2	Y					0.4	
Mount Washington	136	6.2%	16.9%	W																
New Braintree	1,116	6.2%	22.8%	C	5,101	50.0%	3,890	54.8%	7	720	Y	44	0	N					0.3	
New Marlborough	1,508	5.8%	18.7%	W	8,288	56.4%	8,610	36.6%	54	1,934	Y	45	2	N					1.0	
New Salem	990	5.2%	20.1%	W	3,443	34.2%	1,611	13.9%	12	201	Y	19	1	N					1.0	



**Public Library Children's and Young Adult Services Report, FY2009 - Holdings, Circulation, Services and Staffing for Children**

Municipality/Library	2008 Pop	2000 Pop % under 5 Yrs	2000 Pop % under 15 Yrs	Reg	Children's Materials				Programming for Children				Internet PC's in Children's Room	Home-work Center	Staff Librarian: Children's				All Staff Serving Ch.	
					Holdings		Circulation		# Progs	Attendance	Summer Reading				Min. Hourly Wage	Max. Hourly Wage	FTE	MLS	FTE	MLS
					Total	as % of Total	Total	as % of Total			Y/N	# Partic.								
Northfield - Field	151	5.6%	20.9%	W	170	1.6%	570	59.9%	3	60	Y	16	0	N					0.1	
Oakham	1,914	5.4%	24.5%	C	4,318	34.0%	999	14.9%	50	798	Y	32	2	N					0.2	
Otis	1,396	4.0%	17.7%	W	2,373	24.7%	1,445	18.4%	20	240	Y	14	0	N					0.7	
Pelham	1,386	3.9%	18.3%	W	17,069	53.9%	11,818	38.7%	56	700	Y	65	4	Y					0.3	0.1
Peru	832	3.9%	23.1%	W	1,320	27.4%	454	22.2%	6	43	Y	16	0	N					0.2	
Petersham	1,288	5.1%	18.1%	C	4,300	25.0%	2,533	28.2%	33	432	Y	23	0	N					0.2	
Phillipston	1,787	5.9%	24.1%	C	8,320	57.7%	1,848	56.8%	20	1,500	N		0	Y					0.1	
Plainfield	591	4.8%	20.5%	W	6,483	48.9%	2,786	34.0%	4	55	Y	9	0	N					0.3	
Richmond	1,572	4.1%	17.1%	W	7,715	40.5%	4,589	32.1%	19	189	Y	25	0	N					0.3	
Rowe	348	5.4%	16.2%	W	2,979	23.2%	2,631	30.1%	6	59	Y	36	2	N					0.7	
Royalston	1,376	5.7%	23.6%	C	3,240	21.8%	4,904	34.8%	100	1,152	Y	96	0	N	10.00	12.48	0.1		0.4	
Russell	1,719	6.3%	21.1%	W	NC		NC		11	228	Y	70	3	N	13.50	13.50	0.3		0.4	
Sandisfield	848	4.7%	16.8%	W	1,026	23.5%	343	20.0%	2	24	Y	19	0	N					0.1	
Savoy	722	6.1%	20.0%	W																
Shelburne - Arms	1,018	3.6%	16.1%	W	139	0.9%	1,112	8.8%	24	624	Y	50	0	N					0.1	
Shelburne - Free	1,018	3.6%	16.1%	W	5,772	35.1%	2,333	19.0%	6	40	Y	18	0	N					0.3	0.3
Shutesbury	1,847	5.2%	22.5%	W	4,015	36.8%	5,054	22.3%	51	690	Y	115	2	N					0.4	
South Hadley - Gaylord	1,724	4.6%	16.0%	W	3,778	28.7%	6,725	35.5%	64	1,810	Y	40	1	N	21.00	21.00	0.4		0.4	0.0
Tolland	457	6.3%	21.4%	W	1,527	26.9%	222	8.9%	1	34	N		0	N						
Tyringham	339	3.4%	15.1%	W	450	11.9%	39	2.6%	0	0	N		0	N						

**Public Library Children's and Young Adult Services Report, FY2009 - Holdings, Circulation, Services and Staffing for Children**

Municipality/Library	2008 Pop	2000 Pop % under 5 Yrs	2000 Pop % under 15 Yrs	Reg	Children's Materials				Programming for Children				Internet PC's in Children's Room	Home-work Center	Staff Librarian: Children's				All Staff Serving Ch.	
					Holdings		Circulation		# Progs	Attendance	Summer Reading				Min. Hourly Wage	Max. Hourly Wage	FTE	MLS	FTE	MLS
					Total	as % of Total	Total	as % of Total			Y/N	# Partic.								
Wales	1,881	6.0%	20.2%	W	5,097	37.8%	2,825	38.8%	45	344	Y	9	2	Y					0.6	
Warren - West	963	5.8%	22.8%	C	NC		3,237	25.1%	42	824	Y	50	0	N					0.4	
Warwick	749	6.1%	20.8%	W	4,180	32.9%	2,963	35.6%	0	0	Y	14	1	N					0.2	
Wendell	1,000	4.3%	19.3%	W	3,213	22.9%	2,751	20.5%	64	751	Y	40	2	N					0.3	
West Stockbridge	1,432	4.0%	17.2%	W	1,832	25.0%	NC		68	300	Y	15	4	N					0.1	0.1
Westhampton	1,576	5.2%	20.9%	W	5,874	40.8%	6,773	35.8%	41	487	Y	34	0	N	13.27	13.27	0.5		0.5	
Whately	1,566	4.5%	17.8%	W	6,939	40.9%	3,098	33.6%	17	240	Y	33	2	N					0.7	0.6
Windsor	846	6.4%	21.9%	W	1,766	34.9%	1,257	32.4%	0	0	N		0	N					0.1	0.1
Worthington	1,272	4.7%	19.1%	W	4,209	38.8%	1,565	22.4%	10	270	Y	120	0	N					0.1	

<b>Population Group 2 ( 2,000 - 4,999 )</b>																				
Ashby	2,927	5.8%	22.8%	C	8,420	37.4%	7,301	42.0%	64	1,308	Y	100	1	N					0.7	
Avon	4,300	5.5%	18.6%	S	20,219	44.0%	4,894	13.5%	38	486	Y	52	0	N					1.6	
Barnstable - Cotuit	3,201	5.3%	18.1%	S	16,360	31.9%	16,234	34.1%	102	2,383	Y	45	2	N	19.60	19.60	1.0	1	2.3	1.0
Barnstable - Osterville	3,104	5.3%	18.1%	S	10,205	24.9%	20,743	20.6%	204	4,770	Y	24	0	Y	20.50	20.50	1.0	1	1.3	1.0
Barnstable - Sturgis	3,025	5.3%	18.1%	S	9,764	23.1%	23,155	24.4%	132	1,968	Y	65	1	N	19.96	19.96	0.5		1.1	0.1
Barnstable - Whelden	3,034	5.3%	18.1%	S	5,685	27.4%	7,536	19.4%	54	765	Y	30	0	N					0.3	
Berlin	2,853	7.2%	21.3%	C	10,050	49.6%	6,457	34.5%	91	459	Y	30	3	N	15.28	19.52	0.4		0.9	
Bernardston	2,230	4.1%	17.3%	W	4,660	26.4%	5,566	32.2%	66	760	Y	56	0	N					0.3	
Bolton	4,530	8.0%	26.0%	C	12,720	38.1%	12,868	36.6%	51	783	Y	212	0	N					1.7	0.1

**Public Library Children's and Young Adult Services Report, FY2009 - Holdings, Circulation, Services and Staffing for Children**

Municipality/Library	2008 Pop	2000 Pop % under 5 Yrs	2000 Pop % under 15 Yrs	Reg	Children's Materials				Programming for Children				Internet PC's in Children's Room	Home-work Center	Staff Librarian: Children's				All Staff Serving Ch.	
					Holdings		Circulation		# Progs	Attendance	Summer Reading				Min. Hourly Wage	Max. Hourly Wage	FTE	MLS	FTE	MLS
					Total	as % of Total	Total	as % of Total			Y/N	# Partic.								
Boylston	4,264	5.9%	20.4%	C	11,101	38.5%	11,689	50.8%	67	1,142	Y	121	1	N	13.12	17.73	0.8	1	1.1	0.8
Brimfield	3,708	6.1%	22.1%	C	6,680	37.0%	5,657	31.6%	40	203	Y	17	0	N	8.71	8.71	0.3		0.4	
Brookfield	3,007	5.8%	20.7%	C	7,357	25.0%	7,572	27.3%	101	1,212	Y	135	0	N					0.7	0.2
Carlisle	4,874	7.2%	26.3%	N	21,157	31.7%	50,382	37.7%	137	2,722	Y	184	0	N	18.27	22.51	0.6	1	2.0	1.3
Cheshire	3,314	5.0%	19.0%	W	4,526	48.2%	2,442	41.3%	5	53	Y	40	0	N					0.0	
Deerfield	4,694	5.0%	18.4%	W	10,375	45.3%	15,939	37.4%	154	2,802	Y	159	0	N	15.64	15.64	0.5		0.8	0.0
Dennis - Memorial	3,070	3.8%	13.7%	S	2,308	12.2%	10,118	15.3%	46	468	Y	176	0	N					1.1	0.6
Dennis - Sears	3,070	3.8%	13.7%	S	3,130	24.6%	3,510	10.7%	5	100	Y	41	0	N					0.2	
Dennis - South	3,070	3.8%	13.7%	S	3,388	25.1%	1,868	10.3%	1	25	Y	15	0	N					0.1	
Dennis - Town	3,070	3.8%	13.7%	S	7,636	24.6%	15,846	21.4%	75	1,084	Y	117	1	N	18.60	19.34	0.7		1.7	0.7
Dennis - West	3,070	3.8%	13.7%	S	4,434	25.9%	2,325	8.0%	12	116	Y		0	N					0.3	
Dunstable	3,323	8.3%	26.4%	N	13,767	35.4%	9,989	34.3%	84	1,334	Y	104	0	N	13.90	14.40	0.6		0.6	
East Brookfield	2,057	5.9%	21.1%	C	7,979	38.1%	4,846	38.4%	102	1,023	Y	411	0	N	10.48	10.48	0.2		0.5	
Edgartown	3,932	5.8%	18.4%	S	9,797	26.2%	11,190	15.8%	118	1,376	Y	125	8	N	22.10	27.97	1.0	1	1.2	1.2
Essex	3,333	5.5%	20.1%	N	7,874	36.6%	12,218	36.5%	52	600	Y	88	0	N					0.5	
Falmouth - West	3,644	4.5%	17.0%	S	3,467	22.5%	5,614	16.1%	156	1,011	Y	15	2	N	13.25	15.45	0.3		0.3	
Falmouth - Woods Hole	3,644	4.5%	17.0%	S	7,766	22.1%	8,439	24.5%	86	1,025	Y	100	0	N					0.4	
Hadley	4,732	4.6%	15.9%	W	6,940	38.9%	6,990	26.1%	18	312	Y	67	0	N					0.3	0.2
Hatfield	3,227	4.7%	17.0%	W	10,202	41.2%	7,362	36.5%	54	1,246	Y	50	0	N					0.2	0.1
Holland	2,529	6.0%	23.8%	W	3,569	29.9%	1,079	24.9%	4	21	Y	21	0	N						

**Public Library Children's and Young Adult Services Report, FY2009 - Holdings, Circulation, Services and Staffing for Children**

Municipality/Library	2008 Pop	2000 Pop % under 5 Yrs	2000 Pop % under 15 Yrs	Reg	Children's Materials				Programming for Children				Internet PC's in Children's Room	Home-work Center	Staff Librarian: Children's				All Staff Serving Ch.	
					Holdings		Circulation		# Progs	Attendance	Summer Reading				Min. Hourly Wage	Max. Hourly Wage	FTE	MLS	FTE	MLS
					Total	as % of Total	Total	as % of Total			Y/N	# Partic.								
Hubbardston	4,482	7.5%	26.6%	C	6,560	41.0%	4,121	40.6%	15	128	Y	19	0	N					0.1	
Huntington	2,219	5.6%	22.2%	W	4,047	39.5%	2,633	19.5%	44	515	Y	29	0	Y					0.7	
Lanesborough	2,866	5.1%	19.2%	W	1,493	13.2%	2,879	20.2%	5	25	Y	15	1	Y					0.4	
Millville	2,845	8.2%	26.5%	C	6,775	44.6%	1,650	45.2%	33	656	Y	41	2	N						
Nahant	3,498	4.5%	15.6%	N	NC		NC		22	418	Y	53	0	N	11.54	14.62	0.7		1.4	0.4
North Brookfield	4,833	5.6%	22.0%	C	7,421	27.7%	9,908	30.1%	70	1,121	Y	66	2	N	11.26	11.26	0.7		0.8	
Northfield -Dickinson	3,026	5.6%	20.9%	W	6,850	30.3%	14,988	28.5%	88	1,651	Y	127	2	N					0.7	0.1
Oak Bluffs	3,735	5.9%	19.1%	S	10,894	28.8%	30,774	24.8%	128	1,660	Y	175	5	N	19.42	23.89	1.1	1	1.7	1.0
Paxton	4,632	5.0%	20.2%	C	9,925	33.6%	21,053	35.8%	77	1,428	Y	112	3	N	17.83	17.83	1.0		1.0	0.2
Plympton	2,785	6.1%	23.3%	S	9,507	34.6%	6,680	33.6%	58	1,154	Y	125	1	N					0.2	
Princeton	3,475	5.7%	23.7%	C	8,935	38.8%	13,625	44.2%	78	2,237	Y	124	0	N	14.55	14.58	0.6		0.3	
Provincetown	3,376	1.8%	6.2%	S	6,695	17.8%	6,751	10.1%	98	490	Y	10	4	N	16.63	20.72	1.1		0.3	0.1
Sheffield	3,309	5.3%	19.6%	W	11,568	26.6%	5,626	8.7%	85	398	Y	37	0	N					0.6	0.3
Sherborn	4,204	7.6%	26.6%	M	18,919	36.9%	45,591	49.5%	69	1,564	Y	140	0	N	22.89	22.89	1.1	1	1.2	1.2
Stockbridge	2,217	3.3%	12.5%	W	374	1.8%	6,787	20.0%	85	798	Y	38	2	N	11.77	11.77	0.6		0.8	0.0
Sunderland	3,710	5.0%	15.4%	W	11,159	30.4%	18,578	29.9%	86	1,416	Y	100	4	N					0.3	0.0
Tisbury	3,811	5.0%	17.0%	S	13,746	29.9%	35,541	27.6%	204	3,755	Y	320	0	N	19.45	23.81	0.9		1.7	0.1
Truro	2,125	3.5%	14.7%	S	9,302	24.8%	11,466	27.5%	116	2,696	Y	354	0	N					0.6	0.0
Warren - Public	4,105	5.8%	22.8%	C	13,417	45.6%	3,874	20.1%	71	1,107	Y	28	0	N					0.5	
Wellfleet	2,724	4.3%	13.5%	S	11,511	22.2%	20,292	18.0%	312	9,920	Y	307	8	Y	17.31	26.18	1.0		1.1	0.1
West Brookfield	3,806	5.1%	18.3%	C	5,665	32.3%	6,729	25.3%	72	1,256	Y	59	1	N	14.87	18.81	0.9	1	0.9	0.8

**Public Library Children's and Young Adult Services Report, FY2009 - Holdings, Circulation, Services and Staffing for Children**

Municipality/Library	2008 Pop	2000 Pop % under 5 Yrs	2000 Pop % under 15 Yrs	Reg	Children's Materials				Programming for Children				Internet PC's in Children's Room	Home-work Center	Staff Librarian: Children's				All Staff Serving Ch.	
					Holdings		Circulation		# Progs	Attendance	Summer Reading				Min. Hourly Wage	Max. Hourly Wage	FTE	MLS	FTE	MLS
					Total	as % of Total	Total	as % of Total			Y/N	# Partic.								
West Newbury	4,269	7.5%	25.0%	N	25,885	46.4%	57,690	50.6%	192	4,862	Y	241	1	N	26.10	26.10	1.1		2.3	
West Tisbury	2,638	5.2%	20.7%	S	14,420	26.5%	62,543	41.8%	189	2,965	Y	295	0	N	22.10	31.10	0.9		1.4	
Williamsburg	2,509	4.5%	18.0%	W	14,268	28.8%	33,803	34.8%	210	3,820	Y	220	1	N					1.1	

<b>Population Group 3 ( 5,000 - 9,999 )</b>																				
Adams	8,295	5.2%	18.3%	W	12,527	29.2%	21,217	31.1%	112	2,588	Y	241	1	N	12.78	16.76	0.5		1.9	0.1
Ashburnham	5,974	6.0%	23.5%	C	14,405	32.0%	10,693	37.9%	90	1,234	Y	234	0	N					2.6	
Ayer	7,399	7.0%	19.6%	C	NC		25,700	33.4%	97	2,850	Y	225	3	N	24.39	24.39	1.0		1.7	0.1
Barnstable - Centerville	9,740	5.3%	18.1%	S	15,019	38.6%	51,859	32.3%	286	6,700	Y	256	2	N	15.76	15.76	0.7		2.4	0.2
Barnstable - Marstons Mills	8,175	5.3%	18.1%	S	6,681	27.4%	10,847	23.6%	85	1,175	Y	93	0	N	16.00	16.00	0.7		1.0	
Barre	5,431	6.3%	23.4%	C	12,660	32.8%	10,506	28.2%	124	3,629	Y	165	3	Y	13.67	16.81	0.7		0.9	
Berkley	6,462	7.8%	25.7%	S	14,541	60.8%	15,374	53.1%	84	1,240	Y	93	0	N					1.8	1.0
Blackstone	9,021	6.3%	23.0%	C	17,403	37.8%	41,558	44.3%	208	4,564	Y	232	6	N	15.81	15.81	0.9		0.9	0.1
Boxborough	5,081	7.4%	26.5%	C	18,012	32.7%	48,311	38.2%	298	5,162	Y	946	3	N	20.36	25.03	0.6	1	1.6	1.0
Boxford	8,131	7.4%	27.2%	N	23,017	34.3%	26,328	34.8%	130	2,044	Y	321	2	N	21.04	21.04	1.1	1	2.7	1.8
Brewster	9,936	3.5%	16.5%	S	14,441	23.5%	42,008	25.2%	130	2,651	Y	137	4	N	22.35	29.06	1.0		2.0	
Chatham - Eldredge	6,366	2.9%	10.3%	S	14,206	24.0%	35,884	25.1%	316	7,949	Y	94	4	N	23.03	28.76	1.1		2.5	0.5
Cohasset	7,169	7.3%	23.8%	S	16,020	25.7%	73,215	49.0%	158	4,757	Y	1,164	6	Y	18.24	25.68	1.0		1.7	1.1
Dalton	6,593	5.6%	20.7%	W	8,762	20.8%	11,794	28.1%	41	692	Y	143	0	N					0.7	0.1
Dighton	6,724	5.8%	21.7%	S	10,864	39.7%	18,242	43.8%	240	4,462	Y	162	2	N	13.61	13.61	0.9		2.0	0.3

**Public Library Children's and Young Adult Services Report, FY2009 - Holdings, Circulation, Services and Staffing for Children**

Municipality/Library	2008 Pop	2000 Pop % under 5 Yrs	2000 Pop % under 15 Yrs	Reg	Children's Materials				Programming for Children				Internet PC's in Children's Room	Home-work Center	Staff Librarian: Children's				All Staff Serving Ch.	
					Holdings		Circulation		# Progs	Attendance	Summer Reading				Min. Hourly Wage	Max. Hourly Wage	FTE	MLS	FTE	MLS
					Total	as % of Total	Total	as % of Total			Y/N	# Partic.								

Douglas	7,955	8.3%	24.7%	C	NC		NC		122	1,890	Y	170	1	N	18.95	23.16	0.9		1.7	0.4
Dover	5,644	7.6%	26.9%	M	30,308	44.5%	73,801	52.5%	276	4,634	Y	328	2	N	20.83	26.59	0.5	1	2.3	1.4
Eastham	5,438	3.8%	14.5%	S	11,897	23.5%	23,824	20.9%	168	2,840	Y	152	3	N	19.32	22.97	1.0	1	1.3	1.0
Freetown	9,027	5.4%	19.7%	S	10,823	35.6%	5,131	25.9%	2	270	Y		0	Y					0.3	
Georgetown	8,629	8.5%	24.9%	N	19,918	40.0%	25,603	43.6%	193	2,744	Y	194	4	N	17.50	17.50	0.9		1.6	
Granby	6,281	5.6%	20.5%	W	14,232	46.1%	25,646	47.3%	134	2,409	Y	482	2	N	18.18	23.72	1.0		0.7	0.3
Great Barrington	7,379	4.4%	16.3%	W	21,400	29.0%	60,915	27.5%	134	1,190	Y	179	4	Y	16.78	16.78	1.1		3.4	0.1
Groveland	7,198	7.4%	24.6%	N	12,875	37.5%	23,439	48.8%	261	4,454	Y	252	0	N	16.00	16.38	0.9		1.1	0.1
Halifax	7,692	6.9%	21.4%	S	12,622	31.2%	16,949	32.7%	278	3,386	Y	211	0	Y	15.89	19.25	1.0		0.4	
Hampden	5,400	5.3%	21.3%	W	12,957	38.9%	8,000	33.8%	103	2,435	Y	163	1	Y					1.1	0.3
Harvard	6,006	5.7%	22.3%	C	17,566	22.8%	46,086	42.7%	335	6,005	Y	553	3	N	19.28	23.55	1.6	1	1.8	0.6
Hopedale	6,142	7.3%	22.0%	C	10,946	29.9%	12,782	36.4%	74	2,205	Y	219	1	N	20.24	20.24	0.9		1.0	0.1
Lancaster	7,015	5.0%	18.2%	C	19,631	28.5%	38,463	35.7%	60	2,679	Y	197	2	N	15.13	19.31	0.8		1.4	0.1
Lee	5,763	5.1%	17.5%	W	12,830	26.6%	7,857	20.8%	16	486	Y	151	0	N					0.6	0.0
Lenox	5,095	3.5%	16.4%	W	21,087	21.8%	23,170	31.2%	727	13,581	Y	2,780	4	N	14.15	14.15	1.0		1.6	
Lincoln	8,078	9.5%	27.2%	M	33,408	33.9%	70,935	41.2%	253	6,063	Y	151	6	Y	21.46	27.18	0.7	2	2.8	2.2
Littleton	8,711	8.2%	23.9%	N	30,266	33.4%	90,451	45.6%	181	7,733	Y	620	2	N	23.46	23.46	1.0		2.4	0.9
Lunenburg	9,946	5.9%	21.2%	C	19,241	35.9%	40,403	34.8%	99	2,391	Y	304	4	N	17.68	21.74	1.0		1.1	0.1
Manchester-by-the-Sea	5,260	4.9%	19.9%	N	18,515	32.3%	24,022	33.0%	164	4,094	Y	398	0	Y	22.07	24.70	1.0	1	1.8	1.4
Marion	5,148	5.8%	21.2%	S	12,727	31.0%	8,187	18.8%	166	4,536	Y	1,573	2	N	19.49	19.49	0.9		2.3	0.9

**Public Library Children's and Young Adult Services Report, FY2009 - Holdings, Circulation, Services and Staffing for Children**

Municipality/Library	2008 Pop	2000 Pop % under 5 Yrs	2000 Pop % under 15 Yrs	Reg	Children's Materials				Programming for Children				Internet PC's in Children's Room	Home-work Center	Staff Librarian: Children's				All Staff Serving Ch.	
					Holdings		Circulation		# Progs	Attendance	Summer Reading				Min. Hourly Wage	Max. Hourly Wage	FTE	MLS	FTE	MLS
					Total	as % of Total	Total	as % of Total			Y/N	# Partic.								
Mattapoissett	6,463	5.3%	19.6%	S	16,790	41.2%	21,920	37.1%	93	3,128	Y	1,074	2	N	17.85	18.05	1.0		1.4	
Mendon	5,762	7.9%	25.2%	C	17,163	48.9%	35,440	69.6%	168	3,083	Y	431	1	Y	19.56	19.56	1.1	1	2.5	1.1
Merrimac	6,504	7.3%	24.4%	N	19,399	41.7%	24,719	35.5%	112	1,649	Y	186	4	N	12.00	14.34	1.7		2.3	
Middleton	9,634	6.1%	19.4%	N	21,570	42.5%	29,814	49.3%	63	1,582	Y	207	5	N	16.76	19.17	2.1		2.1	
Millis	7,957	8.3%	23.2%	M	20,475	42.2%	38,968	47.3%	174	3,231	Y	975	1	N	18.54	22.65	0.7	1	1.3	0.7
Monson	8,952	6.2%	20.7%	W	18,333	39.2%	12,436	24.2%	77	943	Y	114	1	N					1.1	
Montague	8,316	6.0%	19.1%	W	15,045	31.2%	33,484	33.2%	305	7,291	Y	300	0	N	16.35	22.86	1.0	1	2.4	1.6
Natick - Bacon	9,564	7.4%	19.9%	M	8,117	45.4%	18,005	61.9%	168	2,600	Y	311	0	N	20.97	27.59	0.7	1	1.3	0.9
Newbury	6,934	6.7%	22.7%	N	22,641	41.9%	39,223	51.8%	149	4,600	Y	150	5	N	20.05	20.05	0.9		2.2	0.2
Northampton - Lilly	8,514	4.1%	14.0%	W	10,025	33.8%	44,909	39.2%	143	2,222	Y	100	2	N	11.50	15.00	0.4		1.3	0.4
Orange	7,688	5.5%	21.8%	W	19,814	35.7%	17,790	30.1%	201	3,685	Y	255	3	N	24.17	24.17	1.0	1	1.8	0.8
Orleans	6,269	2.5%	10.9%	S	14,031	20.4%	42,164	22.2%	115	1,844	Y	113	0	N	16.66	20.25	0.9		1.1	0.1
Plainville	8,204	6.8%	21.6%	S	18,795	40.9%	41,905	48.9%	186	3,606	Y	169	1	N	17.71	17.71	0.8		1.1	0.1
Rochester	5,268	6.1%	22.2%	S	8,996	35.8%	22,325	40.7%	80	1,595	Y	206	2	N					1.1	0.3
Rockport	7,612	4.7%	17.3%	N	16,188	26.8%	16,004	22.2%	52	1,912	Y	156	2	Y					1.2	0.1
Rowley	5,738	7.2%	23.9%	N	12,991	33.1%	15,062	42.3%	164	3,063	Y	158	4	N					1.0	0.6
Rutland	7,899	8.0%	26.0%	C	18,410	41.3%	40,092	56.1%	106	2,706	Y	175	3	Y	15.12	17.27	0.6		2.1	
Salisbury	8,417	6.2%	19.7%	N	12,195	35.9%	10,220	26.0%	62	1,421	Y	153	0	N	17.06	17.06	0.9		0.7	
Shirley	7,904	6.0%	18.6%	C	17,417	33.8%	50,907	43.5%	100	3,672	Y	226	2	Y	14.10	19.25	0.7		1.0	
Southampton	5,970	5.5%	20.6%	W	13,821	36.9%	19,133	40.6%	70	1,000	Y	79	2	N	11.49	15.60	0.7		1.1	0.7
Southborough	9,583	9.9%	28.6%	C	26,362	39.9%	85,406	56.8%	173	4,795	Y	584	0	N	17.64	21.21	0.9		3.8	1.5

**Public Library Children's and Young Adult Services Report, FY2009 - Holdings, Circulation, Services and Staffing for Children**

Municipality/Library	2008 Pop	2000 Pop % under 5 Yrs	2000 Pop % under 15 Yrs	Reg	Children's Materials				Programming for Children				Internet PC's in Children's Room	Home-work Center	Staff Librarian: Children's				All Staff Serving Ch.	
					Holdings		Circulation		# Progs	Attendance	Summer Reading				Min. Hourly Wage	Max. Hourly Wage	FTE	MLS	FTE	MLS
					Total	as % of Total	Total	as % of Total			Y/N	# Partic.								
Southwick	9,571	6.3%	21.6%	W	15,946	31.0%	28,662	35.2%	79	3,621	Y	417	2	Y	13.69	16.11	1.6		2.0	
Sterling	7,865	6.7%	23.3%	C	11,495	34.5%	40,164	44.9%	165	5,424	Y	382	3	Y	17.02	25.74	1.0		1.6	
Stow	6,446	8.6%	24.1%	M	15,791	33.0%	42,020	43.0%	197	1,490	Y	518	0	N					1.4	0.4
Sturbridge	9,103	6.0%	21.0%	C	18,587	44.6%	43,327	35.2%	195	5,352	Y	228	2	N	14.71	17.58	0.4		1.7	1.1
Sutton	9,028	7.6%	25.1%	C	11,817	37.0%	25,597	48.7%	356	5,607	Y	266	0	N	17.42	20.82	1.0		1.4	0.2
Templeton	7,831	6.7%	21.8%	C	12,315	51.5%	13,230	52.8%	251	7,500	Y	195	1	N					0.7	
Topsfield	6,051	6.4%	24.0%	N	16,936	26.0%	47,033	33.2%	124	3,733	Y	169	4	N	13.24	18.11	0.7		2.8	
Townsend	9,400	7.0%	24.8%	C	12,817	25.5%	33,446	45.6%	47	2,825	Y	449	1	N	13.64	13.64	0.9		1.6	0.0
Upton	6,584	9.9%	25.8%	C	10,184	30.6%	30,217	45.8%	150	3,270	Y	504	0	N	16.21	21.07	1.1		1.6	0.3
Ware	9,824	6.1%	20.1%	W	13,253	26.4%	11,607	32.1%	75	1,101	Y	68	1	Y	17.13	17.13	1.0		0.9	0.1
West Boylston	8,277	4.3%	17.7%	C	21,239	35.1%	32,243	46.0%	127	2,871	Y	363	2	N	12.63	17.72	0.6		2.0	
West Bridgewater	6,674	5.9%	18.5%	S	26,399	38.3%	26,910	44.1%	65	1,974	Y	210	3	Y	16.34	16.34	1.0		1.8	0.1
Westminster	7,391	6.0%	21.9%	C	17,510	39.0%	18,182	40.4%	114	2,265	Y	147	1	N	18.30	22.49	1.1		1.9	0.4
Williamstown	7,968	3.3%	12.1%	W	20,395	28.5%	50,836	30.4%	221	1,532	Y	72	3	N	20.34	20.34	1.1	1	2.5	1.1

<b>Population Group 4 ( 10,000 - 14,999 )</b>																				
Acushnet	10,368	5.0%	19.0%	S	10,038	33.5%	16,448	31.9%	37	1,005	Y	180	0	N					0.6	0.1
Athol	11,570	5.7%	20.7%	C	16,186	30.0%	43,584	32.6%	226	5,489	Y	202	4	Y	16.60	19.82	1.1	1	2.1	1.1
Bedford	13,545	6.7%	20.1%	M	25,102	21.9%	95,053	29.0%	210	6,687	Y	352	2	N	21.39	28.34	1.0	3	2.3	2.1
Belchertown	14,233	6.9%	22.8%	W	11,129	42.7%	32,855	29.0%	348	8,628	Y	524	0	N	25.69	25.69	1.1		1.1	
Carver	11,574	6.5%	22.3%	S	22,964	37.6%	39,908	45.0%	313	5,501	Y	270	3	N	20.88	24.95	1.0		1.9	



**Public Library Children's and Young Adult Services Report, FY2009 - Holdings, Circulation, Services and Staffing for Children**

Municipality/Library	2008 Pop	2000 Pop % under 5 Yrs	2000 Pop % under 15 Yrs	Reg	Children's Materials				Programming for Children				Internet PC's in Children's Room	Home-work Center	Staff Librarian: Children's				All Staff Serving Ch.	
					Holdings		Circulation		# Progs	Attendance	Summer Reading				Min. Hourly Wage	Max. Hourly Wage	FTE	MLS	FTE	MLS
					Total	as % of Total	Total	as % of Total			Y/N	# Partic.								
Charlton	12,585	7.2%	24.9%	C	17,059	43.8%	53,151	52.9%	329	8,069	Y	428	5	N					2.9	0.0
Clinton	13,965	6.0%	19.5%	C	72,464	36.3%	55,467	27.1%	160	4,995	Y	215	0	N	22.19	22.19	2.0		2.4	0.3
Dudley	11,073	5.9%	20.2%	C	9,383	32.3%	17,418	35.8%	44	1,602	Y	320	2	N	13.38	16.34	1.1		1.2	0.1
Duxbury	14,496	7.0%	24.5%	S	30,234	24.9%	94,555	36.3%	247	6,871	Y	515	3	N	21.53	25.70	1.1		3.3	1.1
East Bridgewater	13,996	7.1%	23.0%	S	22,941	35.7%	34,529	34.7%	283	4,863	Y	243	2	N	23.29	23.29	1.0		1.8	
Groton	10,632	8.8%	28.3%	C	22,235	28.9%	112,462	45.9%	213	6,185	Y	755	4	N	22.33	27.33	1.1		3.4	
Hamilton - Wenham	12,943	6.3%	21.5%	N	43,654	36.7%	115,957	47.7%	260	6,257	Y	1,782	4	N	19.00	19.00	1.0		1.8	
Hanover	13,995	7.7%	24.9%	S	21,545	30.2%	39,921	29.4%	286	4,371	Y	108	6	N	15.75	30.87	1.0	1	2.3	1.0
Hanson	10,019	7.1%	23.5%	S	16,302	26.8%	22,869	34.9%	152	2,564	Y	219	0	Y	20.61	24.00	0.4	1	4.1	2.4
Harwich - Brooks	12,298	4.1%	15.0%	S	19,610	27.8%	55,227	26.1%	304	7,701	Y	330	6	Y	21.28	26.71	1.0	1	1.3	1.0
Holbrook	10,644	6.0%	19.2%	S	15,748	35.6%	26,050	37.0%	77	1,359	Y	157	3	N	19.66	22.94	1.1	1	3.9	1.4
Holliston	13,901	7.4%	25.4%	M	31,401	45.1%	88,701	46.8%	163	4,487	Y	700	2	N	19.00	23.50	0.7	1	1.8	1.0
Hopkinton	14,338	9.9%	29.0%	C	17,221	39.9%	56,629	50.3%	124	2,411	Y	450	0	N	17.70	23.68	1.1	1	1.8	1.1
Hull	11,041	5.7%	18.3%	S	11,303	38.4%	16,777	35.7%	39	523	N		4	Y	19.70	21.76	0.6		1.6	0.1
Ipswich	13,219	5.7%	19.3%	N	31,743	31.7%	59,709	40.8%	163	3,293	Y	152	1	N	20.70	20.70	1.0		2.6	
Kingston	12,328	8.4%	23.9%	S	26,537	36.8%	55,376	38.8%	254	3,619	Y	823	5	N	20.54	27.58	1.0	1	2.1	1.0
Lakeville	10,515	7.7%	23.1%	S	20,545	41.7%	59,586	50.0%	162	3,595	Y	85	3	N	17.66	20.88	1.1		2.1	0.1
Leicester	10,990	5.9%	21.6%	C	11,491	35.9%	18,124	42.1%	102	2,071	Y	47	4	Y	13.79	16.47	0.6		2.1	0.3
Lynnfield	11,412	6.4%	20.4%	N	23,843	27.7%	46,791	35.6%	205	3,404	Y	202	0	N	16.71	18.45	1.0		1.5	1.5
Mashpee	14,227	5.9%	21.2%	S	10,678	30.3%	29,374	24.8%	220	6,061	Y	217	1	N	19.10	29.03	1.0		1.6	0.4
Maynard	10,182	7.1%	20.0%	M	21,191	36.1%	61,929	43.7%	109	4,174	Y	300	7	N	17.83	22.78	1.1		1.4	0.3

**Public Library Children's and Young Adult Services Report, FY2009 - Holdings, Circulation, Services and Staffing for Children**

Municipality/Library	2008 Pop	2000 Pop % under 5 Yrs	2000 Pop % under 15 Yrs	Reg	Children's Materials				Programming for Children				Internet PC's in Children's Room	Home-work Center	Staff Librarian: Children's				All Staff Serving Ch.	
					Holdings		Circulation		# Progs	Attendance	Summer Reading				Min. Hourly Wage	Max. Hourly Wage	FTE	MLS	FTE	MLS
					Total	as % of Total	Total	as % of Total			Y/N	# Partic.								
Medfield	12,275	8.5%	28.8%	M	28,407	35.1%	69,197	32.0%	241	4,062	Y	341	4	N	21.41	26.76	0.8		6.2	1.5
Medway	12,785	8.6%	27.5%	M	23,152	35.0%	52,834	45.9%	56	679	Y	215	0	N					0.9	0.1
Millbury	13,401	5.9%	19.5%	C	19,645	38.4%	23,127	39.5%	110	2,166	Y	159	3	N					1.2	0.7
Nantucket	11,215	5.5%	16.3%	S	16,285	28.7%	61,646	37.5%	492	9,417	Y	519	0	N					4.3	1.1
Norfolk	11,029	7.3%	23.4%	S	30,530	42.3%	52,170	44.8%	332	6,135	Y	210	8	N	22.47	31.75	1.0	1	1.7	1.1
North Adams	13,711	5.5%	18.1%	W	15,525	26.7%	30,710	18.1%	249	4,475	Y	119	1	N	8.25	17.55	1.7	1	2.0	0.7
Northborough	14,646	7.3%	25.2%	C	22,027	24.7%	72,218	48.4%	193	5,325	Y	658	5	N	20.63	26.82	1.1		3.5	0.3
Northbridge	14,383	7.4%	23.3%	C	14,202	26.8%	24,042	40.8%	72	2,239	Y	200	1	N					1.1	
Norwell	10,293	7.2%	23.9%	S	18,429	29.0%	23,203	17.3%	129	4,672	Y	971	3	N	21.06	26.30	1.1	1	0.8	0.7
Oxford	13,615	6.3%	21.5%	C	24,399	43.6%	50,337	43.1%	268	13,413	Y	365	4	N	17.25	26.85	0.9		3.4	
Palmer	12,933	5.6%	20.6%	W	23,629	30.9%	37,853	30.2%	133	2,869	Y	475	24	N	17.44	24.06	2.0		2.0	
Pepperell	11,382	7.8%	25.8%	C	17,546	29.9%	59,977	42.9%	194	4,035	Y	131	3	N	19.33	23.52	1.0	1	3.8	1.9
Raynham	13,566	6.7%	21.4%	S	17,605	42.4%	42,210	47.4%	158	2,671	Y	382	2	N	15.05	15.05	0.9		1.5	
Rehoboth	11,474	5.9%	21.6%	S	16,144	43.8%	25,575	45.4%	155	4,700	Y	670	2	N					1.9	0.3
Seekonk	13,575	5.6%	20.4%	S	34,938	35.1%	79,569	33.0%	153	3,993	Y	282	3	N	20.94	23.32	0.9	1	1.9	1.9
Spencer	11,922	6.4%	20.1%	C	19,179	38.6%	27,806	38.1%	193	3,288	Y	256	3	N	15.45	19.08	1.0		1.9	0.1
Swampscott	13,944	6.4%	20.0%	N	26,322	28.5%	50,200	31.0%	81	1,679	Y	91	4	N	20.05	23.96	1.1	1	1.3	0.6
Tyngsborough	12,019	8.9%	25.9%	N	19,947	33.0%	47,295	40.1%	99	1,695	Y	493	0	N	17.19	20.91	0.9		0.9	0.4
Uxbridge	12,672	8.0%	25.0%	C	19,256	40.4%	33,799	43.1%	27	645	Y	207	3	N					2.6	
Wayland	12,996	7.2%	24.5%	M	20,717	21.5%	88,038	33.9%	75	3,445	Y	350	2	N	22.04	33.54	2.0	1	2.4	0.7
Weston	11,711	6.9%	23.9%	M	41,168	32.6%	118,511	35.7%	260	6,115	Y	273	4	Y	23.51	26.42	1.4	1	3.1	2.4

**Public Library Children's and Young Adult Services Report, FY2009 - Holdings, Circulation, Services and Staffing for Children**

Municipality/Library	2008 Pop	2000 Pop % under 5 Yrs	2000 Pop % under 15 Yrs	Reg	Children's Materials				Programming for Children				Internet PC's in Children's Room	Home-work Center	Staff Librarian: Children's				All Staff Serving Ch.	
					Holdings		Circulation		# Progs	Attendance	Summer Reading				Min. Hourly Wage	Max. Hourly Wage	FTE	MLS	FTE	MLS
					Total	as % of Total	Total	as % of Total			Y/N	# Partic.								
Westwood	14,189	7.8%	24.0%	M	39,883	34.1%	113,098	41.3%	421	10,907	Y	750	3	N	20.93	28.10	1.3	1	3.2	2.0
Whitman	14,447	6.8%	22.4%	S	13,807	25.3%	15,501	17.0%	80	2,823	Y	159	3	N	20.21	22.08	1.0	1	2.0	1.3
Wilbraham	13,970	5.6%	21.5%	W	22,803	37.5%	70,830	36.8%	162	3,456	Y	517	2	N	17.38	26.07	1.0		2.4	1.0
Winchendon	10,164	7.2%	24.9%	C	15,643	34.8%	15,260	45.9%	113	1,125	Y	145	0	N					1.0	0.1
Wrentham	11,133	7.5%	24.1%	S	26,947	40.6%	46,007	43.5%	340	5,712	Y	291	2	Y	18.89	22.90	0.6		0.6	

<b>Population Group 5 ( 15,000 - 24,999 )</b>																				
Abington	16,689	6.9%	21.6%	S	22,509	34.2%	39,587	39.6%	167	2,987	Y	170	3	N	18.30	23.29	1.0	1	1.7	0.9
Acton - Memorial	20,797	7.4%	25.2%	M	59,476	39.3%	311,718	52.2%	149	3,184	Y	905	2	N	21.47	28.09	1.3	3	4.6	1.9
Amesbury	16,584	6.7%	22.1%	N	22,619	29.3%	50,608	34.3%	136	2,406	Y	414	0	N	23.86	24.82	1.0	1	2.0	1.0
Ashland	15,807	7.9%	21.7%	M	21,729	39.6%	91,445	55.5%	145	5,878	Y	417	4	N	13.21	18.03	0.9		2.1	1.1
Auburn	16,222	5.3%	18.9%	C	26,335	24.3%	64,200	34.1%	221	2,577	Y	181	2	N	15.71	22.18	1.1	1	1.6	1.1
Barnstable - Hyannis	15,906	5.3%	18.1%	S	17,517	28.6%	38,495	30.0%	256	4,798	Y	110	7	N	17.00	19.00	1.0		1.0	0.1
Bellingham	15,900	7.0%	22.7%	C	15,795	26.7%	46,070	38.4%	342	6,701	Y	139	1	Y	11.20	11.20	0.3		4.1	1.0
Belmont	23,291	5.9%	19.0%	M	41,334	26.6%	261,701	46.3%	224	8,280	Y	756	4	N	24.11	28.96	1.0	1	3.3	2.0
Bourne	19,392	6.3%	18.5%	S	17,427	25.5%	55,949	35.5%	259	7,103	Y	303	0	N	20.38	27.47	1.1		2.9	0.7
Burlington	24,985	6.9%	20.0%	N	36,974	33.8%	178,561	46.4%	222	8,552	Y	513	5	N					7.8	2.8
Canton	22,048	6.4%	19.8%	S	45,068	32.3%	125,963	49.0%	109	2,519	Y	381	3	N	23.41	31.30	1.0	1	3.3	1.3
Concord	17,450	5.8%	21.0%	M	53,654	19.2%	137,517	32.9%	178	4,062	Y	350	3	N	21.47	32.06	1.1	1	3.3	2.7
Dedham	24,630	6.1%	18.7%	M	35,610	34.4%	97,214	38.7%	76	1,686	Y	416	7	N	23.03	29.05	1.1	1	5.9	3.7
East Longmeadow	15,332	5.6%	20.2%	W	26,702	32.5%	80,718	36.6%	190	7,730	Y	1,157	4	N	21.03	27.41	1.1		3.1	

**Public Library Children's and Young Adult Services Report, FY2009 - Holdings, Circulation, Services and Staffing for Children**

Municipality/Library	2008 Pop	2000 Pop % under 5 Yrs	2000 Pop % under 15 Yrs	Reg	Children's Materials				Programming for Children				Internet PC's in Children's Room	Home-work Center	Staff Librarian: Children's				All Staff Serving Ch.	
					Holdings		Circulation		# Progs	Attendance	Summer Reading				Min. Hourly Wage	Max. Hourly Wage	FTE	MLS	FTE	MLS
					Total	as % of Total	Total	as % of Total			Y/N	# Partic.								
Easthampton	16,195	5.3%	17.2%	W	26,957	43.5%	47,545	43.7%	269	4,887	Y	331	2	N	15.90	16.30	1.0		2.7	
Easton	23,209	6.5%	20.6%	S	30,837	37.9%	64,938	44.2%	290	5,920	Y	2,079	2	N	30.22	30.22	1.0	1	3.3	2.3
Fairhaven	16,112	4.7%	17.7%	S	12,768	16.5%	37,268	27.6%	374	10,824	Y	275	1	N	20.07	20.07	1.1	1	1.1	1.1
Foxborough	16,347	6.9%	22.3%	S	36,813	33.3%	81,139	39.3%	169	3,842	Y	405	1	N					3.9	1.0
Gardner	20,682	6.0%	19.9%	C	30,548	24.8%	57,929	30.8%	100	2,609	Y	514	1	N	18.85	18.85	1.1		1.4	0.3
Grafton	17,553	7.3%	21.1%	C	11,040	26.8%	43,347	45.9%	234	2,251	Y	307	2	N	18.21	21.50	1.0		5.3	
Greenfield	17,828	5.3%	17.8%	W	18,089	23.4%	89,746	30.9%	241	7,376	Y	443	6	N					2.6	0.6
Hingham	22,561	7.5%	23.4%	S	24,059	14.6%	141,732	30.7%	194	5,871	Y	720	5	N	18.37	29.03	2.0	1	3.2	1.0
Holden	16,608	6.4%	22.3%	C	32,050	41.3%	108,150	32.7%	119	4,526	Y	250	0	N	16.60	20.19	1.0		2.3	1.0
Hudson	19,597	6.6%	20.2%	C	26,482	35.4%	86,923	40.2%	279	5,968	Y	1,438	2	N	17.05	21.57	1.1	1	4.4	1.6
Longmeadow	15,329	6.2%	22.1%	W	35,308	37.3%	113,302	56.1%	314	7,742	Y	906	7	Y	21.00	28.48	2.9	1	4.1	1.5
Ludlow	22,410	4.9%	17.1%	W	22,021	34.5%	45,034	31.8%	196	4,721	Y	795	1	N	15.76	23.64	1.1	1	2.0	1.1
Mansfield	23,969	9.6%	27.7%	S	41,104	39.1%	107,284	46.5%	272	7,698	Y	400	1	N					4.1	1.2
Marblehead	19,951	6.7%	20.5%	N	30,065	24.4%	63,560	29.1%	58	2,411	Y	231	6	N	19.01	23.25	1.1	1	2.4	1.1
Marshfield	24,735	7.9%	23.2%	S	22,733	29.7%	96,416	29.1%	190	6,595	Y	275	2	N	23.56	26.51	1.1	1	2.1	1.1
Middleborough	21,117	7.0%	23.0%	S	37,520	35.6%	75,057	42.1%	152	7,367	Y	393	2	N	20.12	29.95	1.0	1	2.9	1.1
Newburyport	17,542	5.7%	17.4%	N	24,624	20.5%	113,697	33.4%	231	4,621	Y	175	3	N	18.02	20.03	1.0		3.0	1.0
North Reading	17,272	7.7%	23.9%	N	24,401	30.1%	43,525	43.2%	141	5,601	Y	250	3	Y	18.12	23.84	1.0	1	2.1	0.7
Norton	19,186	8.0%	23.3%	S	25,479	40.9%	33,464	42.1%	137	4,705	Y	266	1	N					0.4	0.2
Pembroke	18,714	7.9%	24.3%	S	29,980	34.2%	59,868	38.2%	235	5,156	Y	458	0	N					2.9	1.5
Reading	23,052	7.2%	22.3%	N	43,595	33.2%	163,102	39.3%	345	13,692	Y	1,268	8	N	22.11	27.50	2.3	4	5.1	4.0

**Public Library Children's and Young Adult Services Report, FY2009 - Holdings, Circulation, Services and Staffing for Children**

Municipality/Library	2008 Pop	2000 Pop % under 5 Yrs	2000 Pop % under 15 Yrs	Reg	Children's Materials				Programming for Children				Internet PC's in Children's Room	Home-work Center	Staff Librarian: Children's				All Staff Serving Ch.	
					Holdings		Circulation		# Progs	Attendance	Summer Reading				Min. Hourly Wage	Max. Hourly Wage	FTE	MLS	FTE	MLS
					Total	as % of Total	Total	as % of Total			Y/N	# Partic.								
Rockland	17,883	7.3%	22.2%	S	14,164	28.5%	13,716	17.9%	131	2,628	Y	118	2	N	19.16	19.16	1.0	1	2.3	1.1
Sandwich	20,129	6.6%	24.0%	S	24,848	34.2%	101,082	34.6%	276	11,498	Y	808	2	N	19.80	26.97	1.0		5.0	0.3
Scituate	17,926	6.9%	21.9%	S	34,365	34.3%	98,449	38.8%	216	7,332	Y		0	N	25.44	30.24	1.0		2.9	0.6
Sharon	17,373	7.0%	25.2%	S	28,504	33.6%	41,372	16.9%	250	5,000	Y	75	2	N	23.07	28.19	0.6	1	4.4	1.7
Somerset	18,055	4.3%	16.6%	S	21,962	23.6%	30,785	28.8%	251	7,634	Y	207	0	N	22.37	28.29	1.0	1	2.6	1.2
South Hadley - Public	15,517	4.6%	16.0%	W	11,754	24.9%	23,925	14.8%	83	2,379	Y	414	2	N	19.47	29.20	1.0	1	4.3	2.0
Southbridge	16,852	6.6%	21.2%	C	22,676	23.4%	24,361	30.6%	180	2,654	Y	209	2	N	24.12	24.12	1.1		2.3	0.1
Stoneham	21,471	5.8%	17.6%	N	22,392	26.6%	38,651	39.6%	257	12,580	Y	465	3	N	23.12	27.48	1.0	1	3.0	1.0
Sudbury	17,207	8.8%	27.8%	M	31,305	28.4%	159,986	41.1%	307	5,083	Y		4	N	20.78	26.17	0.6		2.6	1.0
Swansea	16,155	4.7%	17.4%	S	20,774	31.2%	14,252	20.2%	141	1,500	Y	80	0	N	13.73	13.73	0.9	1	1.1	0.6
Wakefield	24,717	6.4%	18.9%	N	39,128	34.3%	123,092	41.9%	245	5,888	Y	932	12	N	20.68	25.01	1.7	2	3.7	3.7
Walpole	23,133	6.8%	21.8%	S	34,149	28.0%	93,275	44.3%	138	2,333	Y	620	4	N	25.28	33.36	1.0	1		
Wareham	21,221	5.9%	20.3%	S	25,177	23.8%	46,398	36.2%	102	2,563	Y	1,532	5	Y	17.27	26.55	1.1		1.1	0.1
Webster	16,655	6.6%	19.7%	C	11,258	25.4%	13,117	28.4%	141	2,177	Y	140	3	Y	21.25	21.25	1.0	1	1.4	1.0
Westborough	18,467	7.2%	23.4%	C	30,565	33.3%	110,506	51.1%	123	1,958	Y	322	2	N	22.33	32.20	1.1	1	2.8	1.1
Westford	22,066	8.9%	27.5%	N	41,054	25.7%	158,483	47.1%	150	8,722	Y	1,502	0	N					8.5	2.1
Westport	15,417	4.6%	17.5%	S	16,661	36.5%	20,586	31.3%	37	720	Y	150	1	N					0.9	0.6
Wilmington	21,649	8.0%	23.6%	N	28,676	42.6%	95,766	40.6%	256	7,530	Y	648	6	N	20.36	25.77	1.0		6.0	0.8
Winchester	21,090	7.4%	22.0%	M	42,601	34.5%	228,601	39.4%	782	10,800	Y	1,085	2	Y	23.09	31.46	1.4	2	4.8	2.4
Winthrop	21,880	5.0%	15.7%	N	24,403	26.2%	24,165	33.5%	75	1,187	Y	153	3	N	20.57	22.34	1.0	1	1.5	1.0

**Public Library Children's and Young Adult Services Report, FY2009 - Holdings, Circulation, Services and Staffing for Children**

Municipality/Library	2008 Pop	2000 Pop % under 5 Yrs	2000 Pop % under 15 Yrs	Reg	Children's Materials				Programming for Children				Internet PC's in Children's Room	Home-work Center	Staff Librarian: Children's				All Staff Serving Ch.	
					Holdings		Circulation		# Progs	Attendance	Summer Reading				Min. Hourly Wage	Max. Hourly Wage	FTE	MLS	FTE	MLS
					Total	as % of Total	Total	as % of Total			Y/N	# Partic.								

Yarmouth	23,778	4.4%	14.4%	S	20,760	20.2%	42,537	18.4%	158	3,059	Y	166	3	N	20.35	24.93	1.1	1	1.8	0.1
----------	--------	------	-------	---	--------	-------	--------	-------	-----	-------	---	-----	---	---	-------	-------	-----	---	-----	-----

**Population Group 6 ( 25,000 - 49,999 )**

Agawam	28,091	5.5%	18.2%	W	47,862	29.2%	105,620	31.4%	241	6,158	Y	581	8	N	26.89	33.06	1.0	1	5.4	2.7
Amherst	35,565	2.9%	10.2%	W	71,193	29.4%	129,908	25.5%	184	5,109	Y	291	4	N	20.17	31.24	1.1	1	7.8	1.9
Andover	33,418	6.6%	23.9%	N	48,608	19.2%	194,923	36.7%	445	8,133	Y	451	6	N	26.85	34.86	1.6	2	7.5	4.2
Arlington	40,993	6.0%	15.8%	M	56,348	23.2%	211,083	35.2%	398	17,987	Y	1,250	6	N	22.25	27.75	1.1	2	3.8	2.8
Attleboro	42,833	7.0%	21.6%	S	20,449	18.7%	74,093	32.2%	177	6,690	Y	227	3	N	18.30	24.08	1.0		2.8	1.3
Beverly	39,343	6.3%	18.4%	N	48,605	14.4%	122,368	30.3%	408	7,077	Y	375	2	N	23.23	29.89	0.8	2	6.6	5.0
Billerica	41,844	6.9%	21.7%	N	49,385	36.3%	130,097	42.9%	302	12,806	Y	1,134	5	N	19.99	27.36	2.5	1	4.6	1.7
Braintree	35,294	6.2%	18.6%	S	44,171	28.1%	149,760	42.7%	162	4,868	Y	814	4	N	23.26	26.96	1.0	1	5.4	1.0
Bridgewater	25,774	6.2%	19.3%	S	34,583	24.7%	41,188	50.0%	13	893	Y	234	1	N					0.4	0.2
Chelmsford	34,409	6.7%	20.8%	N	42,605	28.0%	218,377	36.0%	356	11,665	Y	1,070	8	Y	21.15	33.64	1.1		3.9	2.6
Chelsea	41,577	8.1%	23.5%	B	26,544	33.6%	21,270	34.6%	31	1,200	Y	48	3	N	20.44	20.44	1.0		2.4	
Danvers	26,762	5.5%	19.1%	N	34,289	17.1%	83,023	37.5%	106	5,093	Y	370	8	Y	18.95	24.16	1.1		2.8	0.5
Dartmouth	33,899	4.5%	16.5%	S	36,751	33.9%	93,647	35.8%	142	2,837	Y	523	3	N					3.8	1.0
Dracut	29,501	6.8%	21.5%	N	31,526	32.6%	106,449	40.4%	270	8,228	Y	840	4	N	20.06	28.55	1.0		3.7	0.3
Everett	37,353	5.9%	18.2%	N	52,605	34.1%	47,309	34.2%	189	2,881	Y	138	5	Y	23.27	27.34	0.7	1	5.4	2.7
Falmouth - Public	33,123	4.5%	17.0%	S	36,135	23.6%	128,710	23.7%	248	8,220	Y	673	12	N	20.89	26.95	1.1	1	6.3	1.6
Fitchburg	40,239	6.7%	21.7%	C	34,268	19.5%	35,726	32.2%	79	2,223	Y	200	2	N	23.04	30.67	0.6	1	0.6	0.6
Franklin	32,148	9.4%	26.5%	M	28,834	29.1%	165,045	44.1%	409	12,927	Y	170	2	N	19.24	24.35	0.7	1	5.0	1.4

**Public Library Children's and Young Adult Services Report, FY2009 - Holdings, Circulation, Services and Staffing for Children**

Municipality/Library	2008 Pop	2000 Pop % under 5 Yrs	2000 Pop % under 15 Yrs	Reg	Children's Materials				Programming for Children				Internet PC's in Children's Room	Home-work Center	Staff Librarian: Children's				All Staff Serving Ch.	
					Holdings		Circulation		# Progs	Attendance	Summer Reading				Min. Hourly Wage	Max. Hourly Wage	FTE	MLS	FTE	MLS
					Total	as % of Total	Total	as % of Total			Y/N	# Partic.								
Gloucester	30,243	5.8%	18.3%	N	37,794	28.0%	53,368	32.7%	233	5,655	Y	942	6	N	15.72	24.89	2.0		2.8	0.9
Holyoke	39,947	7.9%	24.8%	W	25,715	32.8%	21,676	28.8%	63	976	Y	241	2	N	17.71	20.51	0.6		5.7	2.3
Leominster	41,055	7.1%	21.6%	C	35,971	26.3%	134,506	34.1%	298	10,457	Y	582	2	N	24.03	31.03	1.0	1	3.3	1.0
Lexington	30,272	5.7%	21.9%	M	81,176	32.4%	328,559	43.1%	333	18,129	Y	1,539	1	N	22.04	28.06	1.6	3	8.5	2.6
Marlborough	37,932	7.0%	20.1%	C	35,243	32.9%	75,935	34.9%	287	3,866	Y	285	2	N					5.1	1.0
Melrose	26,708	6.7%	18.6%	N	31,486	29.6%	113,660	40.7%	187	5,945	Y	935	5	N	21.08	25.93	1.1		1.0	
Methuen	44,055	6.3%	20.7%	N	51,192	25.7%	87,051	37.0%	297	8,750	Y	1,625	12	N	19.50	24.50	1.0	1	4.2	2.0
Milford	27,246	7.2%	21.1%	C	34,863	29.1%	71,012	36.6%	171	5,403	Y	635	4	N	19.82	22.81	1.8		5.4	1.1
Milton	26,187	6.3%	21.2%	S	31,801	26.1%	84,487	42.0%	45	1,319	Y	170	8	N	22.55	26.93	1.1	1	5.8	1.1
Natick - Morse	30,286	7.4%	19.9%	M	65,066	34.0%	241,239	41.7%	762	14,833	Y	437	2	N	22.37	30.58	3.3	2	3.8	2.1
Needham	28,560	7.5%	22.3%	M	48,146	29.9%	234,752	41.9%	321	11,262	Y	324	7	N	19.85	30.24	2.7	3	3.8	2.7
North Andover	27,522	7.0%	21.8%	N	48,156	35.4%	102,153	47.8%	141	1,608	Y	325	5	N	19.74	23.58	1.1	1	4.0	2.1
North Attleborough	27,794	7.2%	22.5%	S	16,833	32.0%	70,868	43.1%	173	2,876	Y	310	1	N	18.33	22.54	1.1		2.5	1.4
Northampton-Forbes	25,541	4.1%	14.0%	W	30,104	16.5%	96,558	26.7%	1,045	11,241	Y	212	4	N	12.25	12.25	0.7		3.3	1.1
Norwood	28,211	5.9%	17.7%	M	29,046	25.4%	114,992	36.3%	228	3,916	Y	555	4	N	21.00	31.27	0.7	2	2.7	1.9
Pittsfield	42,652	5.9%	19.2%	W	34,125	19.1%	58,989	22.5%	171	3,174	Y	521	1	N					3.8	1.0
Randolph	30,082	6.0%	19.5%	S	25,329	36.1%	103,100	43.6%	70	2,030	Y	500	2	N					3.6	1.0
Salem	41,256	5.6%	17.2%	N	33,869	23.2%	130,636	24.3%	264	6,880	N		2	N	11.75	19.63	3.7	3	6.1	1.3
Saugus	27,478	5.0%	16.9%	N											18.00	18.00	2.1			
Shrewsbury	33,435	7.9%	22.4%	C	48,906	16.6%	204,953	47.8%	166	4,171	Y	434	1	N	18.48	22.04	1.1	1	11.4	2.2
Stoughton	26,927	5.6%	18.7%	S	28,245	28.3%	54,526	35.7%	167	5,195	Y	770	0	Y	22.95	34.70	1.1	1	4.6	1.9

**Public Library Children's and Young Adult Services Report, FY2009 - Holdings, Circulation, Services and Staffing for Children**

Municipality/Library	2008 Pop	2000 Pop % under 5 Yrs	2000 Pop % under 15 Yrs	Reg	Children's Materials				Programming for Children				Internet PC's in Children's Room	Home-work Center	Staff Librarian: Children's				All Staff Serving Ch.	
					Holdings		Circulation		# Progs	Attendance	Summer Reading				Min. Hourly Wage	Max. Hourly Wage	FTE	MLS	FTE	MLS
					Total	as % of Total	Total	as % of Total			Y/N	# Partic.								
Tewksbury	29,543	7.0%	21.4%	N	30,986	33.6%	106,834	42.0%	280	9,504	Y	875	6	N	20.16	27.79	1.1	1	3.0	1.1
Watertown	32,365	4.7%	12.0%	M	44,241	30.8%	234,357	38.1%	266	10,856	Y	136	12	N	22.71	27.14	2.2	4	7.2	5.3
Wellesley	27,244	7.3%	21.4%	M	75,622	28.1%	253,314	39.3%	239	10,682	Y	300	13	N	22.63	28.63	2.8	5	13.7	5.0
West Springfield	27,459	5.9%	19.3%	W	44,158	40.7%	90,472	36.1%	319	10,148	Y	498	6	N	20.13	22.22	1.1	1	2.4	2.3
Westfield	40,608	5.9%	19.6%	W	42,808	38.1%	111,656	40.8%	285	7,156	Y	765	6	N	12.73	17.75	2.1	1	5.5	2.1
Woburn	36,871	5.8%	17.7%	M	35,635	39.7%	76,916	33.3%	111	4,892	Y	656	3	N					2.7	1.1

<b>Population Group 7 ( 50,000 - 99,999 )</b>																				
Brockton	93,007	7.3%	23.4%	S	70,446	31.7%	45,009	19.4%	173	4,175	Y	460	9	Y	18.32	24.65	1.0		3.7	1.2
Brookline	54,896	4.6%	13.8%	M	77,979	18.5%	327,957	25.6%	486	16,507	Y	485	19	N	22.55	25.91	1.2	1	6.5	2.5
Chicopee	54,941	5.5%	18.4%	W	42,211	38.4%	105,038	30.0%	183	19,242	Y	1,179	16	N					8.0	1.0
Fall River	90,931	6.4%	20.2%	S	57,758	28.0%	63,287	33.6%	162	4,997	Y	240	4	N	13.44	18.85	0.5		2.9	0.6
Framingham	64,885	6.5%	18.3%	M	85,836	29.4%	260,855	30.3%	399	10,186	Y	1,319	9	N	15.76	26.21	4.2	1	5.9	2.1
Haverhill	61,275	7.4%	22.0%	N	43,615	20.5%	105,631	23.0%	124	3,221	Y	121	6	N	13.34	17.78	2.9		4.0	1.1
Lawrence	70,014	9.0%	27.2%	N	44,782	21.0%	35,245	27.7%	416	9,643	Y	1,141	10	N	16.57	18.98	1.0		3.6	
Lynn	86,957	7.3%	22.8%	N	29,607	23.9%	94,303	35.5%	326	5,528	Y	697	4	N	25.02	25.02	1.0		4.0	1.0
Malden	55,597	5.9%	16.8%	B	32,272	13.6%	108,575	35.1%	289	3,647	Y	634	2	N	25.79	25.79	1.1	1	5.8	3.3
Medford	55,573	4.9%	14.9%	M	46,554	25.3%	111,748	35.0%	510	1,860	Y	77	3	N	21.75	25.44	1.0	1	9.4	2.0
New Bedford	91,365	6.7%	20.8%	S	103,490	22.9%	87,914	33.2%	242	4,212	Y	191	5	N					9.1	1.9
Newton	82,139	5.3%	17.5%	M	122,478	20.8%	602,826	33.5%	1,294	28,957	Y	394	8	N	20.40	29.86	5.1	7	10.6	6.5
Peabody	51,331	5.8%	18.6%	N	48,731	29.3%	99,362	35.3%	340	7,079	Y	702	5	N	22.52	22.97	2.0		7.4	1.4



**Public Library Children's and Young Adult Services Report, FY2009 - Holdings, Circulation, Services and Staffing for Children**

Municipality/Library	2008 Pop	2000 Pop % under 5 Yrs	2000 Pop % under 15 Yrs	Reg	Children's Materials				Programming for Children				Internet PC's in Children's Room	Home-work Center	Staff Librarian: Children's				All Staff Serving Ch.	
					Holdings		Circulation		# Progs	Attendance	Summer Reading				Min. Hourly Wage	Max. Hourly Wage	FTE	MLS	FTE	MLS
					Total	as % of Total	Total	as % of Total			Y/N	# Partic.								
Plymouth	55,705	6.7%	21.5%	S	36,633	13.4%	122,117	29.5%	414	7,747	Y	541	2	N	19.83	22.80	2.1	1	4.5	1.9
Quincy	92,339	5.1%	14.7%	S	83,282	13.5%	280,271	39.0%	397	12,281	N		13	N	19.88	28.19	3.0	2	7.2	4.0
Revere	60,204	5.8%	17.8%	N	27,763	42.4%	21,729	50.9%	85	2,125	Y	57	21	N	23.10	23.10	1.1		3.1	
Somerville	75,662	4.5%	12.5%	M	45,428	24.5%	127,030	28.8%	318	5,547	Y	158	6	N					5.9	2.0
Taunton	55,702	7.1%	21.1%	S	37,410	17.0%	79,432	42.0%	176	7,320	Y	187	1	N					5.1	1.8
Waltham	60,236	4.7%	13.1%	M	45,678	22.2%	133,490	24.5%	229	5,378	Y	533	2	N					1.0	1.0
Weymouth	53,261	6.4%	18.7%	S	41,697	31.0%	49,130	15.2%	364	4,966	Y	789	4	N					5.3	1.0

<b>Population Group 8 ( 100,000 + )</b>																				
Boston	609,023	5.4%	16.7%	B	1,171,606	7.2%	906,502	26.5%	4,838	105,921	Y	3,982	4	N	22.51	33.46	28.0	23	37.3	37.3
Cambridge	105,596	4.1%	11.2%	M	120,473	38.2%	332,263	32.1%	363	10,084	Y	616	7	Y	21.02	26.07	6.4	2	15.1	8.4
Lowell	103,615	7.3%	22.7%	N	33,773	14.0%	57,781	28.5%	170	4,509	Y	2,429	8	N	18.36	20.77	1.0	1	5.0	3.0
Springfield	150,640	7.6%	24.4%	W	229,289	28.9%	176,147	27.1%	816	14,869	Y	962	13	Y	20.95	20.95	1.1	1	13.1	5.2
Worcester	175,011	6.5%	19.9%	C	102,289	9.4%	205,431	29.7%	437	13,522	Y	1,078	17	N	19.51	28.46	2.1	2	10.4	5.3

**Public Library Children's and Young Adult Services Report, FY2009 - Services and Staffing for Young Adults**

Municipality/Library	2008 Pop	2000 Pop % under 15 Yrs	Reg	YA/Teen Room or Area?	Distinct YA Materials Collection?	YA/Teen Advisory Group?	Number of YA Programs Held	Attendance at YA Programs	Staff Librarian: Young Adult Services				All Staff Serving YA	
									Minimum Hourly Wage	Maximum Hourly Wage	FTE	MLS	FTE	MLS

<b>Population Group 1 ( 0 - 1,999 )</b>														
Acton - W. Acton	1,248	25.2%	M	N	Y	N	0	0					0.1	0.0
Alford	392	16.8%	W	N	N	N	0	0						
Aquinnah	357	20.4%	S	N	Y	N	0	0					0.0	0.0
Ashfield	1,822	19.8%	W	N	N	N	0	0					0.6	0.0
Becket	1,801	19.5%	W	N	Y	N	10	102					0.3	0.0
Blandford	1,270	19.0%	W	N	Y	N	0	0					0.1	0.0
Buckland	1,989	18.9%	W	N	Y	N	1	25					0.1	0.0
Charlemont	1,378	21.4%	W	Y	Y	N	0	0					0.3	0.0
Chatham - South	670	10.3%	S	N	N	N	0	0						
Chester	1,287	20.0%	W	N	Y	N	0	0					0.0	0.0
Chesterfield	1,288	20.4%	W	N	Y	N	5	5					0.0	0.0
Chilmark	971	17.1%	S	Y	Y	N	11	82					0.1	0.0
Clarksburg	1,619	18.9%	W	N	Y	N	0	0					1.1	0.0
Colrain	1,879	22.3%	W	N	N	N	0	0					0.0	0.0
Conway	1,896	20.0%	W	N	Y	N	0	0					0.2	0.0
Cummington	964	14.5%	W	N	Y	N	0	0						
Egremont	1,351	14.4%	W	N	Y	N	0	0					0.0	0.0
Erving	1,552	18.1%	W	Y	Y	N	1	10						
Florida	675	20.1%	W	Y	Y	N	0	0						
Gill	1,388	19.4%	W	N	N	N	0	0						

**Public Library Children's and Young Adult Services Report, FY2009 - Services and Staffing for Young Adults**

Municipality/Library	2008 Pop	2000 Pop % under 15 Yrs	Reg	YA/Teen Room or Area?	Distinct YA Materials Collection?	YA/Teen Advisory Group?	Number of YA Programs Held	Attendance at YA Programs	Staff Librarian: Young Adult Services				All Staff Serving YA		
									Minimum Hourly Wage	Maximum Hourly Wage	FTE	MLS	FTE	MLS	
Goshen	974	16.6%	W	N	N	N	0	0							
Gosnold	83	16.3%	S	Y	Y	N	0	0						0.0	0.0
Granville	1,686	22.8%	W	Y	Y	N	0	0							
Hancock	1,112	21.6%	W												
Hardwick - Gilbertville	1,325	22.2%	W	Y	Y	N	0	0						0.1	0.0
Hardwick - Paige Memorial	1,854	22.2%	W	Y	Y	N	3	47						0.1	0.0
Harwich - Chase	615	15.0%	S	N	Y	N	0	0						0.3	0.0
Harwich - Port	1,230	15.0%	S	N	Y	N	0	0						0.4	0.0
Heath	798	22.1%	W	N	N	N	0	0						0.1	0.0
Hinsdale	1,913	21.5%	W	Y	Y	N	0	0						0.7	0.0
Leverett	1,772	18.4%	W	Y	Y	N	0	0						0.1	0.1
Leyden	801	22.0%	W	N	Y	N	0	0						0.1	0.0
Middlefield	557	18.3%	W	Y	Y	N	0	0						0.1	0.0
Monroe	96	19.4%	W												
Monterey	950	13.7%	W	N	Y	N	0	0							
Montgomery	720	18.4%	W	N	Y	N	2	10						0.4	0.0
Mount Washington	136	16.9%	W												
New Braintree	1,116	22.8%	C	N	N	N	0	0							
New Marlborough	1,508	18.7%	W	Y	Y	N	0	0						0.9	0.0
New Salem	990	20.1%	W	Y	Y	N	7	30						0.9	0.0
Northfield - Field	151	20.9%	W	Y	Y	N	0	0							

**Public Library Children's and Young Adult Services Report, FY2009 - Services and Staffing for Young Adults**

Municipality/Library	2008 Pop	2000 Pop % under 15 Yrs	Reg	YA/Teen Room or Area?	Distinct YA Materials Collection?	YA/Teen Advisory Group?	Number of YA Programs Held	Attendance at YA Programs	Staff Librarian: Young Adult Services				All Staff Serving YA	
									Minimum Hourly Wage	Maximum Hourly Wage	FTE	MLS	FTE	MLS
Oakham	1,914	24.5%	C	Y	Y	N	1	3					0.1	0.0
Otis	1,396	17.7%	W	Y	Y	N	4	6					0.1	0.0
Pelham	1,386	18.3%	W				0	0						
Peru	832	23.1%	W	N	Y	N	0	0					0.1	0.0
Petersham	1,288	18.1%	C	Y	Y	N	3	41					0.1	0.0
Phillipston	1,787	24.1%	C	N	Y	N	0	0					0.0	0.0
Plainfield	591	20.5%	W	N	Y	N	0	0					0.3	0.0
Richmond	1,572	17.1%	W	N	Y	N	0	0					0.0	0.0
Rowe	348	16.2%	W	N	N	N	0	0					0.7	0.0
Royalston	1,376	23.6%	C	Y	Y	N	2	18					0.3	0.0
Russell	1,719	21.1%	W	N	Y	N	0	0						
Sandisfield	848	16.8%	W	N	N	N	0	0						
Savoy	722	20.0%	W											
Shelburne - Arms	1,018	16.1%	W	N	Y	N	0	0					0.1	0.0
Shelburne - Free	1,018	16.1%	W	N	N	N	0	0						
Shutesbury	1,847	22.5%	W	N	Y	N	0	0					0.7	0.0
South Hadley - Gaylord	1,724	16.0%	W	Y	Y	N	1	4					0.0	0.0
Tolland	457	21.4%	W	N	Y	N	0	0						
Tyringham	339	15.1%	W	N	N	N	0	0						
Wales	1,881	20.2%	W	Y	Y	N	0	0					0.6	0.0
Warren - West	963	22.8%	C	Y	Y	N	0	0					0.1	0.0

**Public Library Children's and Young Adult Services Report, FY2009 - Services and Staffing for Young Adults**

Municipality/Library	2008 Pop	2000 Pop % under 15 Yrs	Reg	YA/Teen Room or Area?	Distinct YA Materials Collection?	YA/Teen Advisory Group?	Number of YA Programs Held	Attendance at YA Programs	Staff Librarian: Young Adult Services				All Staff Serving YA	
									Minimum Hourly Wage	Maximum Hourly Wage	FTE	MLS	FTE	MLS
Warwick	749	20.8%	W	N	N	N	0	0					0.1	0.0
Wendell	1,000	19.3%	W	Y	Y	N	0	0					0.0	0.0
West Stockbridge	1,432	17.2%	W	Y	Y	N	0	0					0.1	0.1
Westhampton	1,576	20.9%	W	N	Y	N	0	0					0.2	0.0
Whately	1,566	17.8%	W	N	Y	N	6	60					0.7	0.6
Windsor	846	21.9%	W	N	N	N	0	0					0.0	0.0
Worthington	1,272	19.1%	W	N	Y	N	0	0					0.2	0.0

<b>Population Group 2 ( 2,000 - 4,999 )</b>														
Ashby	2,927	22.8%	C	Y	Y	N	4	20					0.7	0.0
Avon	4,300	18.6%	S	Y	Y	N	1	8					1.1	0.0
Barnstable - Cotuit	3,201	18.1%	S	Y	Y	N	2	18					1.2	1.0
Barnstable - Osterville	3,104	18.1%	S	N	Y	N	3	60					1.0	1.0
Barnstable - Sturgis	3,025	18.1%	S	Y	Y	Y	13	174					0.1	0.0
Barnstable - Whelden	3,034	18.1%	S	N	Y	N	0	0					0.1	0.0
Berlin	2,853	21.3%	C	N	Y	N	4	22					0.9	0.0
Bernardston	2,230	17.3%	W	Y	Y	N	1	15					0.1	0.0
Bolton	4,530	26.0%	C	Y	Y	N	1	14					1.0	0.1
Boylston	4,264	20.4%	C	Y	Y	Y	0	0						
Brimfield	3,708	22.1%	C	N	Y	N	2	19					0.1	0.0
Brookfield	3,007	20.7%	C	Y	Y	Y	54	350					0.6	0.2

**Public Library Children's and Young Adult Services Report, FY2009 - Services and Staffing for Young Adults**

Municipality/Library	2008 Pop	2000 Pop % under 15 Yrs	Reg	YA/Teen Room or Area?	Distinct YA Materials Collection?	YA/Teen Advisory Group?	Number of YA Programs Held	Attendance at YA Programs	Staff Librarian: Young Adult Services				All Staff Serving YA	
									Minimum Hourly Wage	Maximum Hourly Wage	FTE	MLS	FTE	MLS
Carlisle	4,874	26.3%	N	Y	Y	Y	14	257	18.27	18.27	0.6	1	0.7	0.6
Cheshire	3,314	19.0%	W	N	N	N	0	0					0.0	0.0
Deerfield	4,694	18.4%	W	Y	Y	N	0	0					0.2	0.1
Dennis - Memorial	3,070	13.7%	S	N	Y	N	0	0					0.1	0.1
Dennis - Sears	3,070	13.7%	S	N	Y	N	0	0					0.2	0.0
Dennis - South	3,070	13.7%	S	N	Y	N	0	0					0.1	0.0
Dennis - Town	3,070	13.7%	S	Y	Y	Y	10	109					0.4	0.2
Dennis - West	3,070	13.7%	S	Y	Y	N	0	0					0.2	0.0
Dunstable	3,323	26.4%	N	Y	Y	Y	21	129					0.2	0.0
East Brookfield	2,057	21.1%	C	Y	Y	N	58	320					0.3	0.0
Edgartown	3,932	18.4%	S	Y	Y	N	3	22					1.2	1.2
Essex	3,333	20.1%	N	N	Y	N	2	16					0.1	0.0
Falmouth - West	3,644	17.0%	S	N	Y	N	12	149					0.0	0.0
Falmouth - Woods Hole	3,644	17.0%	S	Y	Y	N	0	0					0.1	0.0
Hadley	4,732	15.9%	W	N	Y	N	0	0					0.1	0.1
Hatfield	3,227	17.0%	W	N	Y	N	1	6					0.0	0.0
Holland	2,529	23.8%	W	Y	Y	N	0	0						
Hubbardston	4,482	26.6%	C	Y	Y	N	0	0					0.1	0.0
Huntington	2,219	22.2%	W	Y	Y	N	31	212					0.3	0.0
Lanesborough	2,866	19.2%	W	N	Y	N	0	0						
Millville	2,845	26.5%	C	Y	Y	N	2	4						

**Public Library Children's and Young Adult Services Report, FY2009 - Services and Staffing for Young Adults**

Municipality/Library	2008 Pop	2000 Pop % under 15 Yrs	Reg	YA/Teen Room or Area?	Distinct YA Materials Collection?	YA/Teen Advisory Group?	Number of YA Programs Held	Attendance at YA Programs	Staff Librarian: Young Adult Services				All Staff Serving YA		
									Minimum Hourly Wage	Maximum Hourly Wage	FTE	MLS	FTE	MLS	
Nahant	3,498	15.6%	N	N	Y	N	0	0							
North Brookfield	4,833	22.0%	C	Y	Y	N	2	19						0.1	0.0
Northfield - Dickinson	3,026	20.9%	W	N	Y	N	0	0						0.1	0.0
Oak Bluffs	3,735	19.1%	S	Y	Y	Y	14	101						0.4	0.2
Paxton	4,632	20.2%	C	N	Y	Y	8	62						0.1	0.0
Plympton	2,785	23.3%	S	N	Y	N	6	40						0.1	0.0
Princeton	3,475	23.7%	C	N	Y	N	0	0						0.2	0.1
Provincetown	3,376	6.2%	S	N	Y	N	0	0						0.1	0.1
Sheffield	3,309	19.6%	W	N	N	N	0	0						0.1	0.1
Sherborn	4,204	26.6%	M	Y	Y	N	7	60						0.7	0.7
Stockbridge	2,217	12.5%	W	N	Y	N	8	160						0.5	0.1
Sunderland	3,710	15.4%	W	Y	Y	Y	9	72						0.2	0.0
Tisbury	3,811	17.0%	S	Y	Y	N	40	116							
Truro	2,125	14.7%	S	Y	Y	N	16	32							
Warren - Public	4,105	22.8%	C	N	Y	N	5	19							
Wellfleet	2,724	13.5%	S	Y	Y	Y	114	900						0.6	0.0
West Brookfield	3,806	18.3%	C	Y	Y	N	1	10						0.9	0.8
West Newbury	4,269	25.0%	N	Y	Y	N	0	0						0.1	0.0
West Tisbury	2,638	20.7%	S	Y	Y	Y	15	569	22.10	31.10	0.9			0.6	0.0
Williamsburg	2,509	18.0%	W	Y	Y	Y	15	350						0.5	0.0

**Public Library Children's and Young Adult Services Report, FY2009 - Services and Staffing for Young Adults**

Municipality/Library	2008 Pop	2000 Pop % under 15 Yrs	Reg	YA/Teen Room or Area?	Distinct YA Materials Collection?	YA/Teen Advisory Group?	Number of YA Programs Held	Attendance at YA Programs	Staff Librarian: Young Adult Services				All Staff Serving YA	
									Minimum Hourly Wage	Maximum Hourly Wage	FTE	MLS	FTE	MLS

<b>Population Group 3 ( 5,000 - 9,999 )</b>														
Adams	8,295	18.3%	W	N	Y	N	0	0					0.1	0.0
Ashburnham	5,974	23.5%	C	N	Y	N	4	36					0.1	0.0
Ayer	7,399	19.6%	C	Y	Y	N	8	160	15.65	15.65	0.9			
Barnstable - Centerville	9,740	18.1%	S	Y	Y	Y	22	172					2.4	0.2
Barnstable - Marstons Mills	8,175	18.1%	S	N	Y	Y	14	100					0.6	0.0
Barre	5,431	23.4%	C	Y	Y	N	0	0					0.9	0.0
Berkley	6,462	25.7%	S	N	Y	N	1	2					0.8	0.8
Blackstone	9,021	23.0%	C	Y	Y	N	24	162					0.1	0.1
Boxborough	5,081	26.5%	C	Y	Y	Y	51	817					1.6	1.0
Boxford	8,131	27.2%	N	Y	Y	Y	23	181					0.5	0.2
Brewster	9,936	16.5%	S	Y	Y	Y	51	802					0.3	0.2
Chatham - Eldredge	6,366	10.3%	S	Y	Y	Y	108	1,215					1.1	0.1
Cohasset	7,169	23.8%	S	Y	Y	Y	17	136					0.2	0.1
Dalton	6,593	20.7%	W	N	Y	N	0	0					0.2	0.1
Dighton	6,724	21.7%	S	Y	Y	Y	21	120					0.4	0.1
Douglas	7,955	24.7%	C	Y	Y	N	30	120					0.1	0.1
Dover	5,644	26.9%	M	Y	Y	Y	28	121					1.7	1.5
Eastham	5,438	14.5%	S	Y	Y	N	0	0					1.1	0.8
Freetown	9,027	19.7%	S	Y	Y	N	2	26					0.4	0.0
Georgetown	8,629	24.9%	N	Y	Y	N	0	0					0.3	0.0



**Public Library Children's and Young Adult Services Report, FY2009 - Services and Staffing for Young Adults**

Municipality/Library	2008 Pop	2000 Pop % under 15 Yrs	Reg	YA/Teen Room or Area?	Distinct YA Materials Collection?	YA/Teen Advisory Group?	Number of YA Programs Held	Attendance at YA Programs	Staff Librarian: Young Adult Services				All Staff Serving YA	
									Minimum Hourly Wage	Maximum Hourly Wage	FTE	MLS	FTE	MLS
Granby	6,281	20.5%	W	Y	Y	Y	8	69					0.3	0.2
Great Barrington	7,379	16.3%	W	Y	Y	N	1	23						
Groveland	7,198	24.6%	N	Y	Y	Y	62	469					0.3	0.1
Halifax	7,692	21.4%	S	Y	Y	N	0	0						
Hampden	5,400	21.3%	W	Y	Y	N	22	506					0.3	0.1
Harvard	6,006	22.3%	C	Y	Y	Y	35	287					0.7	0.7
Hopedale	6,142	22.0%	C	Y	Y	N	5	24					0.3	0.0
Lancaster	7,015	18.2%	C	Y	Y	N	28	243						
Lee	5,763	17.5%	W	N	N	N	0	0					0.1	0.0
Lenox	5,095	16.4%	W	N	Y	N	0	0						
Lincoln	8,078	27.2%	M	Y	Y	Y	25	175					0.2	0.1
Littleton	8,711	23.9%	N	Y	Y	Y	20	260					2.4	0.6
Lunenburg	9,946	21.2%	C	Y	Y	Y	63	1,088	17.68	21.74	0.7		0.9	0.1
Manchester-by-the-Sea	5,260	19.9%	N	Y	Y	Y	29	240	18.94	20.58	0.2	1	1.2	0.8
Marion	5,148	21.2%	S	N	Y	N	0	0					0.9	0.4
Mattapoissett	6,463	19.6%	S	N	Y	N	14	154					0.6	0.0
Mendon	5,762	25.2%	C	Y	Y	Y	8	34					2.5	1.1
Merrimac	6,504	24.4%	N	Y	Y	N	4	33					0.6	0.0
Middleton	9,634	19.4%	N	Y	Y	N	24	227					0.5	0.0
Millis	7,957	23.2%	M	Y	Y	Y	21	166					0.3	0.1
Monson	8,952	20.7%	W	Y	Y	N	14	67					1.1	0.0

**Public Library Children's and Young Adult Services Report, FY2009 - Services and Staffing for Young Adults**

Municipality/Library	2008 Pop	2000 Pop % under 15 Yrs	Reg	YA/Teen Room or Area?	Distinct YA Materials Collection?	YA/Teen Advisory Group?	Number of YA Programs Held	Attendance at YA Programs	Staff Librarian: Young Adult Services				All Staff Serving YA	
									Minimum Hourly Wage	Maximum Hourly Wage	FTE	MLS	FTE	MLS
Montague	8,316	19.1%	W	N	Y	N	7	22					1.0	0.3
Natick - Bacon	9,564	19.9%	M	N	Y	N	0	0					0.3	0.2
Newbury	6,934	22.7%	N	Y	Y	N	5	145					0.9	0.3
Northampton - Lilly	8,514	14.0%	W	Y	Y	N	0	0					1.3	0.4
Orange	7,688	21.8%	W	Y	Y	N	6	90					1.0	0.3
Orleans	6,269	10.9%	S	Y	Y	N	0	0					1.1	0.1
Plainville	8,204	21.6%	S	N	Y	N	12	10					0.1	0.1
Rochester	5,268	22.2%	S	Y	Y	N	0	0					1.1	0.3
Rockport	7,612	17.3%	N	N	Y	N	0	0					0.1	0.0
Rowley	5,738	23.9%	N	Y	Y	N	7	55					0.1	0.1
Rutland	7,899	26.0%	C	Y	Y	N	12	45					0.3	0.0
Salisbury	8,417	19.7%	N	N	Y	N	0	0						
Shirley	7,904	18.6%	C	Y	Y	Y	88	1,372					0.1	0.0
Southampton	5,970	20.6%	W	Y	Y	N	10	25					1.1	0.7
Southborough	9,583	28.6%	C	Y	Y	N	13	120					0.7	0.2
Southwick	9,571	21.6%	W	Y	Y	N	18	774	16.11	16.11	0.5		1.0	0.0
Sterling	7,865	23.3%	C	Y	Y	N	37	113					0.7	0.0
Stow	6,446	24.1%	M	Y	Y	N	0	0						
Sturbridge	9,103	21.0%	C	Y	Y	N	0	0						
Sutton	9,028	25.1%	C	Y	Y	Y	20	151					0.1	0.1
Templeton	7,831	21.8%	C	N	Y	N	1	11					0.1	0.0

**Public Library Children's and Young Adult Services Report, FY2009 - Services and Staffing for Young Adults**

Municipality/Library	2008 Pop	2000 Pop % under 15 Yrs	Reg	YA/Teen Room or Area?	Distinct YA Materials Collection?	YA/Teen Advisory Group?	Number of YA Programs Held	Attendance at YA Programs	Staff Librarian: Young Adult Services				All Staff Serving YA	
									Minimum Hourly Wage	Maximum Hourly Wage	FTE	MLS	FTE	MLS
Topsfield	6,051	24.0%	N	Y	Y	N	8	240					1.0	0.0
Townsend	9,400	24.8%	C	Y	Y	N	10	77					0.1	0.0
Upton	6,584	25.8%	C	Y	Y	Y	15	171					0.6	0.1
Ware	9,824	20.1%	W	Y	Y	N	9	32						
West Boylston	8,277	17.7%	C	Y	Y	Y	23	152	12.63	17.72	0.7		0.5	0.0
West Bridgewater	6,674	18.5%	S	Y	Y	Y	18	446					1.0	0.0
Westminster	7,391	21.9%	C	Y	Y	N	5	24					0.3	0.1
Williamstown	7,968	12.1%	W	Y	Y	N	0	0					0.3	0.0
Acushnet	10,368	19.0%	S	N	Y	N	1	12					0.6	0.1

<b>Population Group 4 ( 10,000 - 14,999 )</b>														
Athol	11,570	20.7%	C	Y	Y	Y	157	1,697					1.0	0.0
Bedford	13,545	20.1%	M	Y	Y	Y	16	177					0.9	0.8
Belchertown	14,233	22.8%	W	N	Y	N	32	266						
Carver	11,574	22.3%	S	Y	Y	Y	22	325					0.4	0.0
Charlton	12,585	24.9%	C	Y	Y	Y	7	92					1.2	0.0
Clinton	13,965	19.5%	C	Y	Y	N	8	84						
Dudley	11,073	20.2%	C	N	Y	Y	10	77					1.2	0.0
Duxbury	14,496	24.5%	S	Y	Y	Y	147	1,486	21.53	25.70	1.1	1	1.4	1.4
East Bridgewater	13,996	23.0%	S	Y	Y	N	5	21					0.1	0.1
Groton	10,632	28.3%	C	Y	Y	Y	91	1,408	20.13	24.64	0.5	1	4.1	0.5

**Public Library Children's and Young Adult Services Report, FY2009 - Services and Staffing for Young Adults**

Municipality/Library	2008 Pop	2000 Pop % under 15 Yrs	Reg	YA/Teen Room or Area?	Distinct YA Materials Collection?	YA/Teen Advisory Group?	Number of YA Programs Held	Attendance at YA Programs	Staff Librarian: Young Adult Services				All Staff Serving YA	
									Minimum Hourly Wage	Maximum Hourly Wage	FTE	MLS	FTE	MLS
Hamilton - Wenham	12,943	21.5%	N	Y	Y	Y	92	646	19.01	19.01	1.0		1.5	0.3
Hanover	13,995	24.9%	S	Y	Y	Y	12	125					0.1	0.1
Hanson	10,019	23.5%	S	Y	Y	N	10	164					0.3	0.1
Harwich - Brooks	12,298	15.0%	S	Y	Y	N	47	317					0.7	0.5
Holbrook	10,644	19.2%	S	Y	Y	N	6	89					0.9	0.3
Holliston	13,901	25.4%	M	Y	Y	Y	11	56					0.8	0.5
Hopkinton	14,338	29.0%	C	Y	Y	Y	12	87					0.2	0.1
Hull	11,041	18.3%	S	N	Y	N	0	0					0.1	0.1
Ipswich	13,219	19.3%	N	N	Y	Y	5	60					0.7	0.3
Kingston	12,328	23.9%	S	Y	Y	Y	23	293					0.6	0.2
Lakeville	10,515	23.1%	S	Y	Y	Y	0	0					0.1	0.0
Leicester	10,990	21.6%	C	Y	Y	N	0	0					2.4	0.3
Lynnfield	11,412	20.4%	N	Y	Y	Y	8	78					1.5	1.5
Mashpee	14,227	21.2%	S	N	Y	N	3	10					0.3	0.1
Maynard	10,182	20.0%	M	Y	Y	Y	6	119					0.5	0.2
Medfield	12,275	28.8%	M	Y	Y	N	9	379	21.41	26.76	0.9		3.1	1.5
Medway	12,785	27.5%	M	Y	Y	N	0	0					0.4	0.0
Millbury	13,401	19.5%	C	Y	Y	N	0	0					0.4	0.1
Nantucket	11,215	16.3%	S	Y	Y	Y	62	784					1.3	0.1
Norfolk	11,029	23.4%	S	Y	Y	N	3	24						
North Adams	13,711	18.1%	W	Y	Y	N	0	0					1.5	0.7

**Public Library Children's and Young Adult Services Report, FY2009 - Services and Staffing for Young Adults**

Municipality/Library	2008 Pop	2000 Pop % under 15 Yrs	Reg	YA/Teen Room or Area?	Distinct YA Materials Collection?	YA/Teen Advisory Group?	Number of YA Programs Held	Attendance at YA Programs	Staff Librarian: Young Adult Services				All Staff Serving YA	
									Minimum Hourly Wage	Maximum Hourly Wage	FTE	MLS	FTE	MLS
Northborough	14,646	25.2%	C	Y	Y	Y	39	252	20.63	26.82	0.8	1	1.5	1.4
Northbridge	14,383	23.3%	C	Y	Y	N	4	20					1.1	0.0
Norwell	10,293	23.9%	S	Y	Y	Y	36	1,466					0.4	0.3
Oxford	13,615	21.5%	C	Y	Y	Y	75	1,714					0.4	0.3
Palmer	12,933	20.6%	W	Y	Y	Y	43	346	17.49	17.49	1.0		1.4	0.0
Pepperell	11,382	25.8%	C	Y	Y	Y	22	343					0.4	0.4
Raynham	13,566	21.4%	S	N	Y	N	0	0						
Rehoboth	11,474	21.6%	S	Y	Y	N	6	82					1.9	0.1
Seekonk	13,575	20.4%	S	Y	Y	N	13	139					6.1	6.1
Spencer	11,922	20.1%	C	Y	Y	Y	29	423					1.1	0.0
Swampscott	13,944	20.0%	N	Y	Y	N	7	399					1.2	2.4
Tyngsborough	12,019	25.9%	N	Y	Y	N	0	0						
Uxbridge	12,672	25.0%	C	Y	Y	Y	9	66					0.3	0.0
Wayland	12,996	24.5%	M	N	Y	N	2	16					1.1	0.3
Weston	11,711	23.9%	M	Y	Y	N	12	95					0.4	0.4
Westwood	14,189	24.0%	M	Y	Y	N	3	23					0.4	0.2
Whitman	14,447	22.4%	S	Y	Y	Y	35	400					0.7	0.4
Wilbraham	13,970	21.5%	W	Y	Y	Y	145	2,170	17.38	23.69	1.0	1	1.0	0.6
Winchendon	10,164	24.9%	C	N	Y	N	2	NC					0.3	0.1
Wrentham	11,133	24.1%	S	Y	Y	N	6	48						

**Public Library Children's and Young Adult Services Report, FY2009 - Services and Staffing for Young Adults**

Municipality/Library	2008 Pop	2000 Pop % under 15 Yrs	Reg	YA/Teen Room or Area?	Distinct YA Materials Collection?	YA/Teen Advisory Group?	Number of YA Programs Held	Attendance at YA Programs	Staff Librarian: Young Adult Services				All Staff Serving YA	
									Minimum Hourly Wage	Maximum Hourly Wage	FTE	MLS	FTE	MLS

<b>Population Group 5 ( 15,000 - 24,999 )</b>														
Abington	16,689	21.6%	S	Y	Y	N	16	136					0.2	0.1
Acton - Memorial	20,797	25.2%	M	Y	Y	Y	0	0	21.47	28.01	0.6	1		
Amesbury	16,584	22.1%	N	Y	Y	N	41	344					0.3	0.3
Ashland	15,807	21.7%	M	Y	Y	Y	17	111	19.92	19.92	0.5		0.5	0.5
Auburn	16,222	18.9%	C	Y	Y	N	7	83					0.3	0.1
Barnstable - Hyannis	15,906	18.1%	S	N	Y	N	0	0					1.0	0.9
Bellingham	15,900	22.7%	C	Y	Y	Y	246	4,321	17.00	17.00	0.6		0.6	0.0
Belmont	23,291	19.0%	M	Y	Y	N	54	680	24.11	28.96	0.7	1	0.7	0.7
Bourne	19,392	18.5%	S	Y	Y	N	24	169					2.9	0.7
Burlington	24,985	20.0%	N	Y	Y	Y	80	981					2.9	1.1
Canton	22,048	19.8%	S	Y	Y	N	6	100					0.9	0.3
Concord	17,450	21.0%	M	Y	Y	N	18	290					2.0	1.9
Dedham	24,630	18.7%	M	Y	Y	N	1	14					0.2	0.7
East Longmeadow	15,332	20.2%	W	Y	Y	N	15	157					0.6	0.3
Easthampton	16,195	17.2%	W	N	Y	Y	5	40	10.05	11.30	0.4		0.4	0.0
Easton	23,209	20.6%	S	Y	Y	N	7	49					0.6	0.5
Fairhaven	16,112	17.7%	S	Y	Y	Y	36	367						
Foxborough	16,347	22.3%	S	Y	Y	N	0	0						
Gardner	20,682	19.9%	C	Y	Y	N	0	0						
Grafton	17,553	21.1%	C	N	Y	Y	6	95					0.3	0.0

**Public Library Children's and Young Adult Services Report, FY2009 - Services and Staffing for Young Adults**

Municipality/Library	2008 Pop	2000 Pop % under 15 Yrs	Reg	YA/Teen Room or Area?	Distinct YA Materials Collection?	YA/Teen Advisory Group?	Number of YA Programs Held	Attendance at YA Programs	Staff Librarian: Young Adult Services				All Staff Serving YA	
									Minimum Hourly Wage	Maximum Hourly Wage	FTE	MLS	FTE	MLS
Greenfield	17,828	17.8%	W	Y	Y	N	12	151					5.4	1.1
Hingham	22,561	23.4%	S	Y	Y	N	7	37					3.2	1.0
Holden	16,608	22.3%	C	Y	Y	N	2	20					0.9	0.6
Hudson	19,597	20.2%	C	Y	Y	N	10	105					1.3	1.3
Longmeadow	15,329	22.1%	W	Y	Y	N	20	263					0.0	0.0
Ludlow	22,410	17.1%	W	Y	Y	N	59	795					2.3	1.1
Mansfield	23,969	27.7%	S	Y	Y	N	0	0					0.6	0.3
Marblehead	19,951	20.5%	N	Y	Y	N	14	139	19.01	23.25	1.1		2.5	2.0
Marshfield	24,735	23.2%	S	N	Y	N	0	0						
Middleborough	21,117	23.0%	S	Y	Y	Y	39	922					1.6	0.6
Newburyport	17,542	17.4%	N	Y	Y	N	19	298	18.02	20.03	1.0	1	1.4	0.6
North Reading	17,272	23.9%	N	Y	Y	Y	62	603					0.8	0.3
Norton	19,186	23.3%	S	Y	Y	N	17	167					0.4	0.2
Pembroke	18,714	24.3%	S	Y	Y	Y	19	241					0.7	0.4
Reading	23,052	22.3%	N	Y	Y	N	37	915	22.11	27.50	1.3	2	2.1	1.6
Rockland	17,883	22.2%	S	Y	Y	N	22	253					0.9	0.5
Sandwich	20,129	24.0%	S	Y	Y	N	51	774	19.80	26.97	1.0		0.7	0.2
Scituate	17,926	21.9%	S	Y	Y	N	131	2,708	25.44	30.24	1.0	1	2.3	1.1
Sharon	17,373	25.2%	S	N	Y	N	2	8						
Somerset	18,055	16.6%	S	N	Y	N	0	0					2.6	1.2
South Hadley - Public	15,517	16.0%	W	Y	Y	N	14	150					4.3	2.0

**Public Library Children's and Young Adult Services Report, FY2009 - Services and Staffing for Young Adults**

Municipality/Library	2008 Pop	2000 Pop % under 15 Yrs	Reg	YA/Teen Room or Area?	Distinct YA Materials Collection?	YA/Teen Advisory Group?	Number of YA Programs Held	Attendance at YA Programs	Staff Librarian: Young Adult Services				All Staff Serving YA	
									Minimum Hourly Wage	Maximum Hourly Wage	FTE	MLS	FTE	MLS
Southbridge	16,852	21.2%	C	Y	Y	N	11	68					0.3	0.1
Stoneham	21,471	17.6%	N	Y	Y	Y	3	36					1.7	1.7
Sudbury	17,207	27.8%	M	Y	Y	N	10	170					0.4	0.4
Swansea	16,155	17.4%	S	Y	Y	Y	72	360					0.8	0.8
Wakefield	24,717	18.9%	N	Y	Y	Y	24	290	20.68	25.01	1.0	1	2.1	1.5
Walpole	23,133	21.8%	S	N	Y	N	0	0					0.1	0.1
Wareham	21,221	20.3%	S	N	Y		1	20					0.4	0.0
Webster	16,655	19.7%	C	N	Y	N	18	453					1.0	1.0
Westborough	18,467	23.4%	C	Y	Y	N	3	55	22.33	32.20	0.6	1	0.3	0.3
Westford	22,066	27.5%	N	Y	Y	Y	21	452	20.86	27.55	1.4	1	4.2	1.0
Westport	15,417	17.5%	S	Y	Y	N	7	126					0.4	0.3
Wilmington	21,649	23.6%	N	Y	Y	Y	79	727					1.0	1.0
Winchester	21,090	22.0%	M	Y	Y	N	2	15	23.09	31.46	0.4	1		
Winthrop	21,880	15.7%	N	N	Y	N	0	0						
Yarmouth	23,778	14.4%	S	Y	Y	N	2	150					0.1	0.1

<b>Population Group 6 ( 25,000 - 49,999 )</b>														
Agawam	28,091	18.2%	W	Y	Y	Y	19	363					4.5	1.8
Amherst	35,565	10.2%	W	Y	Y	N	4	23						
Andover	33,418	23.9%	N	Y	Y	Y	151	950	26.85	34.86	1.1	1	1.7	1.0
Arlington	40,993	15.8%	M	Y	Y	Y	34	655					1.2	0.4



**Public Library Children's and Young Adult Services Report, FY2009 - Services and Staffing for Young Adults**

Municipality/Library	2008 Pop	2000 Pop % under 15 Yrs	Reg	YA/Teen Room or Area?	Distinct YA Materials Collection?	YA/Teen Advisory Group?	Number of YA Programs Held	Attendance at YA Programs	Staff Librarian: Young Adult Services				All Staff Serving YA		
									Minimum Hourly Wage	Maximum Hourly Wage	FTE	MLS	FTE	MLS	
Attleboro	42,833	21.6%	S	Y	Y	N	0	0							
Beverly	39,343	18.4%	N	Y	Y	N	29	743					3.1	2.0	
Billerica	41,844	21.7%	N	Y	Y	Y	28	1,548					0.6	0.6	
Braintree	35,294	18.6%	S	Y	Y	Y	25	317	23.26	26.96	0.5	1	2.2	1.5	
Bridgewater	25,774	19.3%	S	Y	Y	N	0	0					0.2	0.1	
Chelmsford	34,409	20.8%	N	Y	Y	Y	36	216	21.15	33.64	1.1	1			
Chelsea	41,577	23.5%	B	Y	Y	N	2	30							
Danvers	26,762	19.1%	N	Y	Y	Y	16	352	18.95	24.16	1.1				
Dartmouth	33,899	16.5%	S	Y	Y	N	24	152					3.8	1.0	
Dracut	29,501	21.5%	N	Y	Y	Y	47	262	13.00	13.00	0.3		2.5	1.0	
Everett	37,353	18.2%	N	Y	Y	Y	85	1,075	23.27	27.34	1.0	1	1.6	1.4	
Falmouth - Public	33,123	17.0%	S	Y	Y	Y	54	1,678					3.3	2.3	
Fitchburg	40,239	21.7%	C	Y	Y	N	0	0							
Franklin	32,148	26.5%	M	Y	Y	Y	31	247	19.24	24.35	0.4		1.9	0.0	
Gloucester	30,243	18.3%	N	Y	Y	Y	9	325	14.75	18.83	1.0				
Holyoke	39,947	24.8%	W	Y	Y	N	5	29					5.5	3.1	
Leominster	41,055	21.6%	C	Y	Y	Y	43	785					0.6	0.0	
Lexington	30,272	21.9%	M	Y	Y	Y	27	444							
Marlborough	37,932	20.1%	C	Y	Y	Y	53	355	21.26	23.92	1.0		1.0	1.0	
Melrose	26,708	18.6%	N	Y	Y	Y	51	987					1.0	1.0	
Methuen	44,055	20.7%	N	Y	Y	N	130	1,094					1.1	1.0	

**Public Library Children's and Young Adult Services Report, FY2009 - Services and Staffing for Young Adults**

Municipality/Library	2008 Pop	2000 Pop % under 15 Yrs	Reg	YA/Teen Room or Area?	Distinct YA Materials Collection?	YA/Teen Advisory Group?	Number of YA Programs Held	Attendance at YA Programs	Staff Librarian: Young Adult Services				All Staff Serving YA	
									Minimum Hourly Wage	Maximum Hourly Wage	FTE	MLS	FTE	MLS
Milford	27,246	21.1%	C	Y	Y	Y	192	4,800	19.82	22.81	1.4		1.0	1.0
Milton	26,187	21.2%	S	Y	Y	N	2	52	22.55	26.93	0.7	1		
Natick - Morse	30,286	19.9%	M	Y	Y	Y	34	509						
Needham	28,560	22.3%	M	Y	Y	N	53	1,463					0.5	0.2
North Andover	27,522	21.8%	N	Y	Y	N	12	162					2.1	1.6
North Attleborough	27,794	22.5%	S	Y	Y	N	2	25					2.5	1.4
Northampton - Forbes	25,541	14.0%	W	Y	Y	Y	38	358	14.33	14.33	0.9			
Norwood	28,211	17.7%	M	Y	Y	N	0	0					1.1	0.7
Pittsfield	42,652	19.2%	W	Y	Y	N	33	585					0.9	0.0
Randolph	30,082	19.5%	S	Y	N	N	0	0						
Salem	41,256	17.2%	N	N	Y	N	0	0						
Saugus	27,478	16.9%	N											
Shrewsbury	33,435	22.4%	C	Y	Y	Y	66	1,878	18.48	22.04	1.1		2.0	0.3
Stoughton	26,927	18.7%	S	Y	Y	Y	35	385	22.95	34.70	1.0	1	4.6	1.9
Tewksbury	29,543	21.4%	N	Y	Y	N	12	75					2.9	1.1
Watertown	32,365	12.0%	M	Y	Y	Y	94	1,897	22.71	27.14	0.8	3	1.9	1.9
Wellesley	27,244	21.4%	M	Y	Y	N	10	132						
West Springfield	27,459	19.3%	W	Y	Y	Y	70	400					2.4	2.3
Westfield	40,608	19.6%	W	Y	Y	Y	55	1,355	13.26	13.26	1.1		0.3	0.3
Woburn	36,871	17.7%	M	N	Y	Y	29	242	21.11	26.17	1.1	1	1.6	1.1

**Public Library Children's and Young Adult Services Report, FY2009 - Services and Staffing for Young Adults**

Municipality/Library	2008 Pop	2000 Pop % under 15 Yrs	Reg	YA/Teen Room or Area?	Distinct YA Materials Collection?	YA/Teen Advisory Group?	Number of YA Programs Held	Attendance at YA Programs	Staff Librarian: Young Adult Services				All Staff Serving YA	
									Minimum Hourly Wage	Maximum Hourly Wage	FTE	MLS	FTE	MLS

<b>Population Group 7 ( 50,000 - 99,999 )</b>														
Brockton	93,007	23.4%	S	Y	Y	Y	18	305	20.20	27.50	1.0	1	2.0	1.3
Brookline	54,896	13.8%	M	Y	Y	Y	35	441	22.55	25.91	1.1	1	2.3	1.3
Chicopee	54,941	18.4%	W	Y	Y	Y	44	921	19.25	20.75	1.0		10.0	4.0
Fall River	90,931	20.2%	S	Y	Y	N	5	72					1.9	0.5
Framingham	64,885	18.3%	M	Y	Y	N	0	0					0.4	0.3
Haverhill	61,275	22.0%	N	Y	Y	N	33	517	16.73	19.80	1.1	1	1.5	1.5
Lawrence	70,014	27.2%	N	N	Y	N	0	0						
Lynn	86,957	22.8%	N	N	Y	N	23	64					1.8	1.0
Malden	55,597	16.8%	B	Y	Y	Y	83	1,864	24.47	24.91	1.1	1	5.8	3.3
Medford	55,573	14.9%	M	Y	Y	N	0	0	23.52	28.62	1.0	1	5.7	3.4
New Bedford	91,365	20.8%	S	N	Y	N	0	0					1.1	0.3
Newton	82,139	17.5%	M	Y	Y	Y	8	95	23.44	29.86	1.1	2	6.7	4.5
Peabody	51,331	18.6%	N	Y	Y	Y	241	3,943	22.52	22.97	1.0		2.1	0.4
Plymouth	55,705	21.5%	S	Y	Y	Y	6	13					0.6	0.4
Quincy	92,339	14.7%	S	Y	Y	Y	3	74						
Revere	60,204	17.8%	N	Y	Y	N	5	150					3.1	0.0
Somerville	75,662	12.5%	M	Y	Y	N	14	89					2.3	0.7
Taunton	55,702	21.1%	S	N	Y	N	2	37	14.96	14.96	1.0			
Waltham	60,236	13.1%	M	Y	Y	N	13	270					0.2	0.2
Weymouth	53,261	18.7%	S	Y	Y	Y	24	266	16.98	28.08	1.0	1		

**Public Library Children's and Young Adult Services Report, FY2009 - Services and Staffing for Young Adults**

Municipality/Library	2008 Pop	2000 Pop % under 15 Yrs	Reg	YA/Teen Room or Area?	Distinct YA Materials Collection?	YA/Teen Advisory Group?	Number of YA Programs Held	Attendance at YA Programs	Staff Librarian: Young Adult Services				All Staff Serving YA	
									Minimum Hourly Wage	Maximum Hourly Wage	FTE	MLS	FTE	MLS

<b>Population Group 8 ( 100,000 + )</b>														
Boston	609,023	16.7%	B	Y	Y	Y	1,079	10,340	22.51	33.46	7.0	4		
Cambridge	105,596	11.2%	M	Y	Y	Y	192	1,840	21.02	26.07	2.1	1	2.7	1.7
Lowell	103,615	22.7%	N	Y	Y	Y	70	1,365	18.36	20.77	1.0	1	3.0	2.0
Springfield	150,640	24.4%	W	Y	Y	Y	184	2,185	23.11	23.11	1.1	1	8.2	1.6
Worcester	175,011	19.9%	C	Y	Y	Y	110	1,661	19.51	28.46	1.1	1	4.3	3.8

## Appendix - DEFINITIONS

### CHILDREN'S & YOUNG ADULT SERVICES REPORT

### 2009 Data

Term	Definition
Municipality/Library	Name of municipality in which the library is located, followed by a shortened library name when the library is located in a municipality with more than one main independent library or, in the case of Hamilton-Wenham, the name of the library serving both municipalities. The library data includes branch and bookmobile data.
2008 Population (Library Service Population)	For libraries in municipalities with one independent public library this is the population of the municipality from the 2008 population estimate for the municipality in which the library is located. For multiple independent public libraries in the following municipalities, this is a percentage of the municipality's 2008 population estimate: Acton, Barnstable, Chatham, Dennis, Falmouth, Hardwick, Harwich, Natick, Northampton, Northfield, Shelburne, South Hadley, Warren. For the Hamilton-Wenham Public Library, a joint library, this is the total of the 2008 population estimate for Hamilton and Wenham.
2000 Population Percent Under 5 Years & Under 15 Years	Source: Census American Factfinder, SF1 Census 2000 Table P12. Prepared by the Massachusetts State Data Center at the UMass Donahue Institute. <a href="http://msdc.donahue.umassp.edu/">http://msdc.donahue.umassp.edu/</a> For the Hamilton-Wenham Public Library, this is the sum of children's population of both towns divided by the sum of the total populations.
Reg	Regional Library System in which the municipality is located. (B=Boston, C=Central, M=MetroWest, N=Northeast, S=Southeastern, W=Western)
Children's Materials: Holdings	Sum of print, non-print, electronic format and miscellaneous children's materials owned or leased by the library. Excludes YA materials. NC means the number of children's materials, regardless of media type, is not counted separately from adult materials.
Children's Materials: Holdings as % of Total	Total holdings of children's materials divided by the sum of all children's, YA and adult library materials in all formats, including microforms. The percentage will be affected in libraries with large microform holdings because the latter are invariably adult materials.
Children's Materials: Circulation	Number of direct (over the counter) circulations, including renewals, of children's materials. Excludes YA materials and ILLs to and from other libraries. NC means circulation of all types of children's materials is not counted separately from circulation of adult materials.

Term	Definition
Children's Materials: Circ as % of Total	Total direct (over the counter) children's materials circulation divided by the sum of circulation of children's, YA and adult materials.
Programming for Children: # of Programs	<p>Number of programs sponsored by the library for people age 14 (or the age used by the local library) and under. A program is any planned event that introduces library services, provides information or entertainment, or promotes the library. It may take place in the library or elsewhere in the community, but the library must be a primary sponsor of the event, contributing time, money, space, or people to the planning or presentation of the program. Includes programs for special groups of children such as Scout troops.</p> <p>Examples include story hours, book discussion group meetings, formal Internet training sessions, and programs for schools such as classroom visits to the library, book talks for visiting classes and staff presentations to classes in the schools. Excludes routine use of a library's Homework Center.</p>
Programming for Children: Attendance	The count of the <u>audience</u> at all programs for which the primary audience is children. Includes adults who attend programs intended primarily for children. Excludes routine attendance at a library's Homework Center.
Programming for Children: Summer Reading	A summer reading program sponsored by the library. A summer program is aimed at children and young adults with a focus on thinking, learning, and sharing literature.
Programming for Children: Summer Reading # of Participants	The number of people 14 or under who completed at least one program requirement for the library's summer reading program.
Internet PC's in Children's Room	Number of Internet computers for patron use in the children's room as of June 30, 2009.
Homework Center	Indicates whether the library had a homework center. A space in the library dedicated to meeting the curricular needs of specified grades and/or home schoolers and designated for use during specific times of the day. It houses, separate from the rest of the library, at least one CD-ROM or Internet station and materials in a variety of print, non-print and electronic formats related to the curriculum needs of the target grades. The center is staffed by library staff and/or volunteer coaches trained by the library staff to assist students.

Term	Definition
Staff Librarian: Children's Minimum Hourly Wage	Minimum wage reported for Staff Librarian - Children's position(s). These may be both experienced and/or entry-level librarians with no supervisory responsibilities for other professional staff.
Staff Librarian: Children's Maximum Hourly Wage	Maximum wage reported for Staff Librarian - Children's position(s).
Staff Librarian: Children's FTE	Full-time equivalency (FTE) of Staff Librarian - Children's position(s). Includes prorated seasonal positions and positions that were temporarily vacant.
Staff Librarian: Children's Holding MLS	Number of paid staff with an ALA-accredited MLS holding a Staff Librarian-Children's position. This excludes positions vacant on 7/1/09. Blank means zero.
All Staff Serving Children FTE	Average weekly FTE of all staff providing reference, programming or circulation services to children.
All Librarians Serving Children FTE Holding MLS	A subset of the preceding figure for only those staff with an ALA-accredited MLS in the following position classifications providing services to children: Director, Assistant Director, Senior Librarian, Branch Librarian, all Staff Librarians. Excludes non-librarian positions such as Library Associate, Senior & Library Technician that may also provide services to children. Blank means zero.
Staff Librarian: Young Adults' Minimum Hourly Wage	Minimum wage reported for Staff Librarian - YA Services position(s).
Staff Librarian: Young Adults' Maximum Hourly Wage	Maximum wage reported for Staff Librarian - YA Services position(s).
Staff Librarian Young Adults' FTE	Full-time equivalency of Staff Librarian - YA Services position(s). Includes prorated seasonal positions and positions that were temporarily vacant on 7/1/09.
Staff Librarian Young Adults' Holding MLS	Number of paid staff with an ALA-accredited MLS holding a Staff Librarian-YA Services position. This excludes positions vacant on 7/1/09. Blank means zero.

## Public Library Children's and Young Adult Services Report - Index

Library	Page	Library	Page	Library	Page	Library	Page
Abington	15, 34	Braintree	18, 37	Duxbury	13, 31	Harwich-Harwich Port	4, 23
Acton-W. Acton	3, 22	Brewster	9, 28	East Bridgewater	13, 31	Harwich-Brooks	13, 32
Acton-Memorial	15, 34	Bridgewater	18, 37	East Brookfield	7, 26	Hatfield	7, 26
Acushnet	12, 31	Brimfield	7, 25	East Longmeadow	16, 34	Haverhill	20, 39
Adams	9, 28	Brockton	20, 39	Eastham	10, 28	Heath	4, 23
Agawam	18, 36	Brookfield	7, 25	Easthampton	16, 34	Hingham	16, 35
Alford	3, 22	Brookline	20, 39	Easton	Page	Hinsdale	4, 23
Amesbury	15, 34	Buckland	3, 22	Edgartown	7, 26	Holbrook	13, 32
Amherst	18, 36	Burlington	15, 34	Egremont	3, 22	Holden	16, 35
Andover	18, 36	Cambridge	21, 40	Erving	3, 22	Holland	8, 26
Aquinnah	3, 22	Canton	15, 34	Essex	7, 26	Holliston	13, 32
Arlington	18, 36	Carlisle	7, 26	Everett	18, 37	Holyoke	19, 37
Ashburnham	9, 28	Carver	13, 31	Fairhaven	16, 34	Hopedale	10, 29
Ashby	6, 25	Charlemont	3, 22	Fall River	20, 39	Hopkinton	13, 32
Ashfield	3, 22	Charlton	13, 31	Falmouth-West Falmouth	7, 26	Hubbardston	8, 26
Ashland	15, 34	Chatham-So. Chatham	3, 22	Falmouth-Woods Hole	7, 26	Hudson	16, 35
Athol	12, 31	Chatham-Eldredge	9, 28	Falmouth-Public	19, 37	Hull	13, 32
Attleboro	18, 37	Chelmsford	18, 37	Fitchburg	19, 37	Huntington	8, 26
Auburn	15, 34	Chelsea	18, 37	Florida	3, 22	Ipswich	13, 32
Avon	6, 25	Cheshire	7, 26	Foxborough	16, 34	Kingston	13, 32
Ayer	9, 28	Chester	3, 22	Framingham	20, 39	Lakeville	13, 32
Barnstable-Cotuit	6, 25	Chesterfield	3, 22	Franklin	19, 37	Lancaster	10, 29
Barnstable-Osterville	6, 25	Chicopee	20, 39	Freetown	10, 28	Lanesborough	8, 26
Barnstable-Sturgis	6, 25	Chilmark	3, 22	Gardner	16, 34	Lawrence	20, 39
Barnstable-Whelden	6, 25	Clarksburg	3, 22	Georgetown	10, 28	Lee	10, 29
Barnstable-Marstons Mills	9, 28	Clinton	13, 31	Gill	3, 22	Leicester	13, 32
Barnstable-Centerville	9, 28	Cohasset	9, 28	Gloucester	19, 37	Lenox	10, 29
Barnstable-Hyannis	15, 34	Colrain	3, 22	Goshen	4, 23	Leominster	19, 37
Barre	9, 28	Concord	16, 34	Gosnold	4, 23	Leverett	4, 23
Becket	3, 22	Conway	3, 22	Grafton	16, 34	Lexington	19, 37
Bedford	13, 31	Cummington	3, 22	Granby	10, 29	Leyden	4, 23
Belchertown	13, 31	Dalton	10, 28	Granville	4, 23	Lincoln	10, 29
Bellingham	15, 34	Danvers	18, 37	Great Barrington	10, 29	Littleton	10, 29
Belmont	15, 34	Dartmouth	18, 37	Greenfield	16, 35	Longmeadow	16, 35
Berkley	9, 28	Dedham	16, 34	Groton	13, 31	Lowell	21, 40
Berlin	6, 25	Deerfield	7, 26	Groveland	10, 29	Ludlow	16, 35
Bernardston	6, 25	Dennis-Memorial	7, 26	Hadley	7, 26	Lunenburg	10, 29
Beverly	18, 37	Dennis-Sears	7, 26	Halifax	10, 29	Lynn	20, 39
Billerica	18, 37	Dennis-South Dennis	7, 26	Hamilton-Wenham	13, 32	Lynnfield	14, 32
Blackstone	9, 28	Dennis-Town	7, 26	Hampden	10, 29	Malden	20, 39
Blandford	3, 22	Dennis-West Dennis	7, 26	Hancock	4, 23	Manchester-by-the-Sea	11, 29
Bolton	7, 25	Dighton	10, 28	Hanover	13, 32	Mansfield	16, 35
Boston	21, 40	Douglas	10, 28	Hanson	13, 32	Marblehead	16, 35
Bourne	15, 34	Dover	10, 28	Hardwick-Gilbertville	4, 23	Marion	11, 29
Boxborough	9, 28	Dracut	18, 37	Hardwick-Paige Memorial	4, 23	Marlborough	19, 37
Boxford	9, 28	Dudley	13, 31	Harvard	10, 29	Marshfield	16, 35
Boylston	7, 25	Dunstable	7, 26	Harwich-Chase	4, 23	Mashpee	14, 32



## Public Library Children's and Young Adult Services Report - Index

Library	Page	Library	Page	Library	Page	Library	Page
Mattapoissett	11, 29	Norton	17, 35	Seekonk	14, 33	Wareham	17, 36
Maynard	14, 32	Norwell	14, 33	Sharon	17, 35	Warren-West Warren	6, 24
Medfield	14, 32	Norwood	19, 38	Sheffield	8, 27	Warren-Public	8, 27
Medford	20, 39	Oak Bluffs	8, 27	Shelburne-Arms	5, 24	Warwick	6, 25
Medway	14, 32	Oakham	5, 24	Shelburne- Free	5, 24	Watertown	20, 38
Melrose	19, 37	Orange	11, 30	Sherborn Page	8, 27	Wayland	15, 33
Mendon	11, 29	Orleans	11, 30	Shirley	12, 30	Webster	17, 36
Merrimac	11, 29	Otis	5, 24	Shrewsbury	20, 38	Wellesley	20, 38
Methuen	19, 37	Oxford	14, 33	Shutesbury	5, 24	Wellfleet	8, 27
Middleborough	16, 35	Palmer	14, 33	Somerset	17, 35	Wendell	6, 25
Middlefield	4, 23	Paxton	8, 27	Somerville	21, 39	West Boylston	12, 31
Middleton	11, 29	Peabody	21, 39	South Hadley-Gaylord	5, 24	West Bridgewater	12, 31
Milford	19, 38	Pelham	5, 24	South Hadley-Public	17, 35	West Brookfield	9, 27
Millbury	14, 32	Pembroke	17, 35	Southampton	12, 30	West Newbury	9, 27
Millis	11, 29	Pepperell	14, 33	Southborough	12, 30	West Springfield	20, 38
Millville	8, 26	Peru	5, 24	Southbridge	17, 36	West Stockbridge	6, 25
Milton	19, 38	Petersham	5, 24	Southwick	12, 30	West Tisbury	9, 27
Monroe	4, 23	Phillipston	5, 24	Spencer	14, 33	Westborough	17, 36
Monson	11, 29	Pittsfield	19, 38	Springfield	21, 40	Westfield	20, 38
Montague	11, 30	Plainfield	5, 24	Sterling	12, 30	Westford	17, 36
Monterey	4, 23	Plainville	11, 30	Stockbridge	8, 27	Westhampton	6, 25
Montgomery	4, 23	Plymouth	21, 39	Stoneham	17, 36	Westminster	12, 31
Mount Washington	4, 23	Plympton	8, 27	Stoughton	20, 38	Weston	15, 33
Nahant	8, 27	Princeton	8, 27	Stow	12, 30	Westport	17, 36
Nantucket	14, 32	Provincetown	8, 27	Sturbridge	12, 30	Westwood	15, 33
Natick-Bacon	11, 30	Quincy	21, 39	Sudbury	17, 36	Weymouth	21, 39
Natick-Morse	19, 38	Randolph	19, 38	Sunderland	8, 27	Whately	6, 25
Needham	19, 38	Raynham	14, 33	Sutton	12, 30	Whitman	15, 33
New Bedford	21, 39	Reading	17, 35	Swampscott	14, 33	Wilbraham-Meekins	15, 33
New Braintree	4, 23	Rehoboth	14, 33	Swansea	17, 36	Williamsburg	9, 27
New Marlborough	4, 23	Revere	21, 39	Taunton	21, 39	Williamstown	12, 31
New Salem	4, 23	Richmond	5, 24	Templeton	12, 30	Wilmington	18, 36
Newbury	11, 30	Rochester	11, 30	Tewksbury	20, 38	Winchendon	15, 33
Newburyport	16, 35	Rockland	17, 35	Tisbury	8, 27	Winchester	18, 36
Newton	21, 39	Rockport	11, 30	Tolland	5, 24	Windsor	6, 25
Norfolk	14, 32	Rowe	5, 24	Topsfield	12, 31	Winthrop	18, 36
North Adams	14, 32	Rowley	11, 30	Townsend	12, 31	Woburn	20, 38
North Andover	19, 38	Royalston	5, 24	Truro	8, 27	Worcester	21, 40
North Attleborough	19, 38	Russell	5, 24	Tyngsborough	14, 33	Worthington	6, 25
North Brookfield	8, 27	Rutland	11, 30	Tyringham	5, 24	Wrentham	15, 33
North Reading	16, 35	Salem	19, 38	Upton	12, 31	Yarmouth	18, 36
Northampton-Lilly	11, 30	Salisbury	11, 30	Uxbridge	15, 33		
Northampton-Forbes	19, 38	Sandisfield	5, 24	Wakefield	17, 36		
Northborough	14, 33	Sandwich	17, 35	Wales	6, 24		
Northbridge	14, 33	Saugus	20, 38	Walpole	17, 36		
Northfield-Field	5, 23	Savoy	5, 24	Waltham	21, 39		
Northfield-Dickinson	8, 27	Scituate	17, 35	Ware	12, 31		