

**JANUARY 2001**  
**MASSACHUSETTS DEPARTMENT OF REVENUE**  
**FINAL MONTHLY REVENUES**  
**(dollar amount in thousands)**

<b>JANUARY</b>	<b>FY2000</b>	<b>FY2001</b>	<b>Change FY00 - FY01 AMOUNT</b>	<b>PERCENT</b>
<b>Total Taxes *</b>	\$1,684,364	\$1,939,126	\$254,762	15.1 %
<b>Net Income</b>	1,227,463	1,422,141	194,678	15.9
<b>Withholding</b>	683,117	762,753	79,636	11.7
<b>Total Sales &amp; Use</b>	337,771	384,008	46,237	13.7
<b>Regular Sales</b>	264,828	303,194	38,366	14.5
<b>Net Corporate</b>	3,121	4,778	1,657	53.1
<b>Business Excise</b>				
<b>Banks, Insurance, Public Utilities</b>	214	(1,257)	(1,471)	(686.3)
<b>Other Excises**</b>	115,795	129,456	13,660	11.8

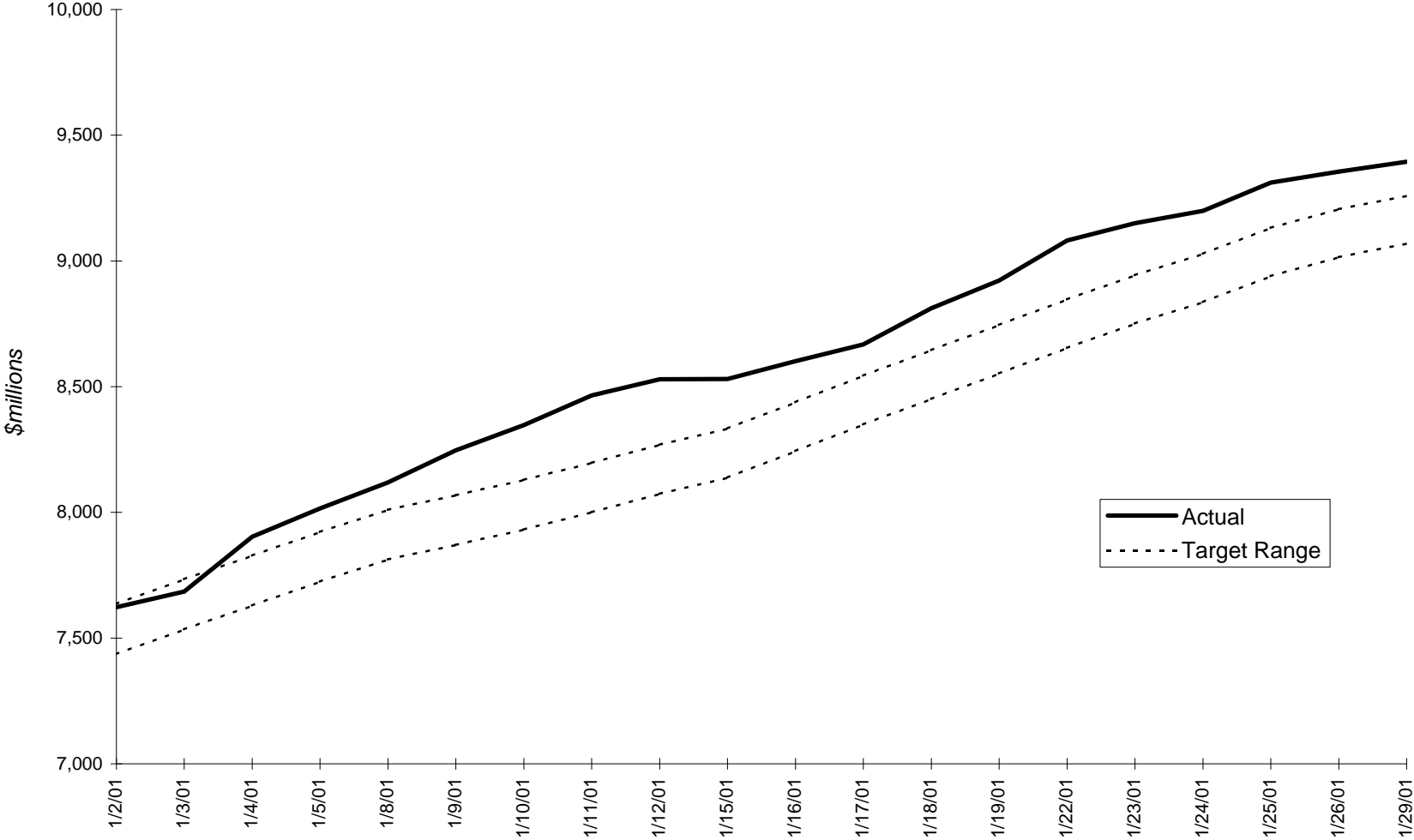
<b>YEAR-TO-DATE (JULY - JANUARY)</b>	<b>FY2000</b>	<b>FY2001</b>	<b>Change FY00 - FY01 AMOUNT</b>	<b>PERCENT</b>	<b>BENCHMARK YEAR-TO-DATE RANGE (In Millions)</b>
<b>Total Taxes *</b>	\$8,730,740	\$9,495,050	\$764,309	8.8 %	9,134 - 9,324
<b>Net Income</b>	5,169,361	5,760,853	591,493	11.4	
<b>Withholding</b>	4,247,529	4,671,838	424,310	10.0	
<b>Total Sales &amp; Use</b>	2,087,597	2,230,181	142,584	6.8	
<b>Regular Sales</b>	1,513,733	1,622,806	109,073	7.2	
<b>Net Corporate</b>	414,465	373,416	(41,049)	(9.9)	
<b>Business Excise</b>					
<b>Banks, Insurance, Public Utilities</b>	182,801	205,771	22,970	12.6	
<b>Other Excises**</b>	876,517	924,828	48,311	5.5	

\* Detail may not add to Total for Budget due to rounding.

\*\* Other Excises includes tax revenue collected by other agencies.

Note: The 'White Sheet' for January, containing DOR's final revenue figures, is published after the eighth working day of February.

# FY2001 Year-to-Date Tax Revenue through January 31, 2001



Target range is based on Administration and Finance FY2001 annual estimate of \$15.587 billion (plus \$645 million in MBTA transfer funds).