

OCTOBER 2006
MASSACHUSETTS DEPARTMENT OF REVENUE
FINAL MONTHLY REVENUES
(dollar amount in thousands)

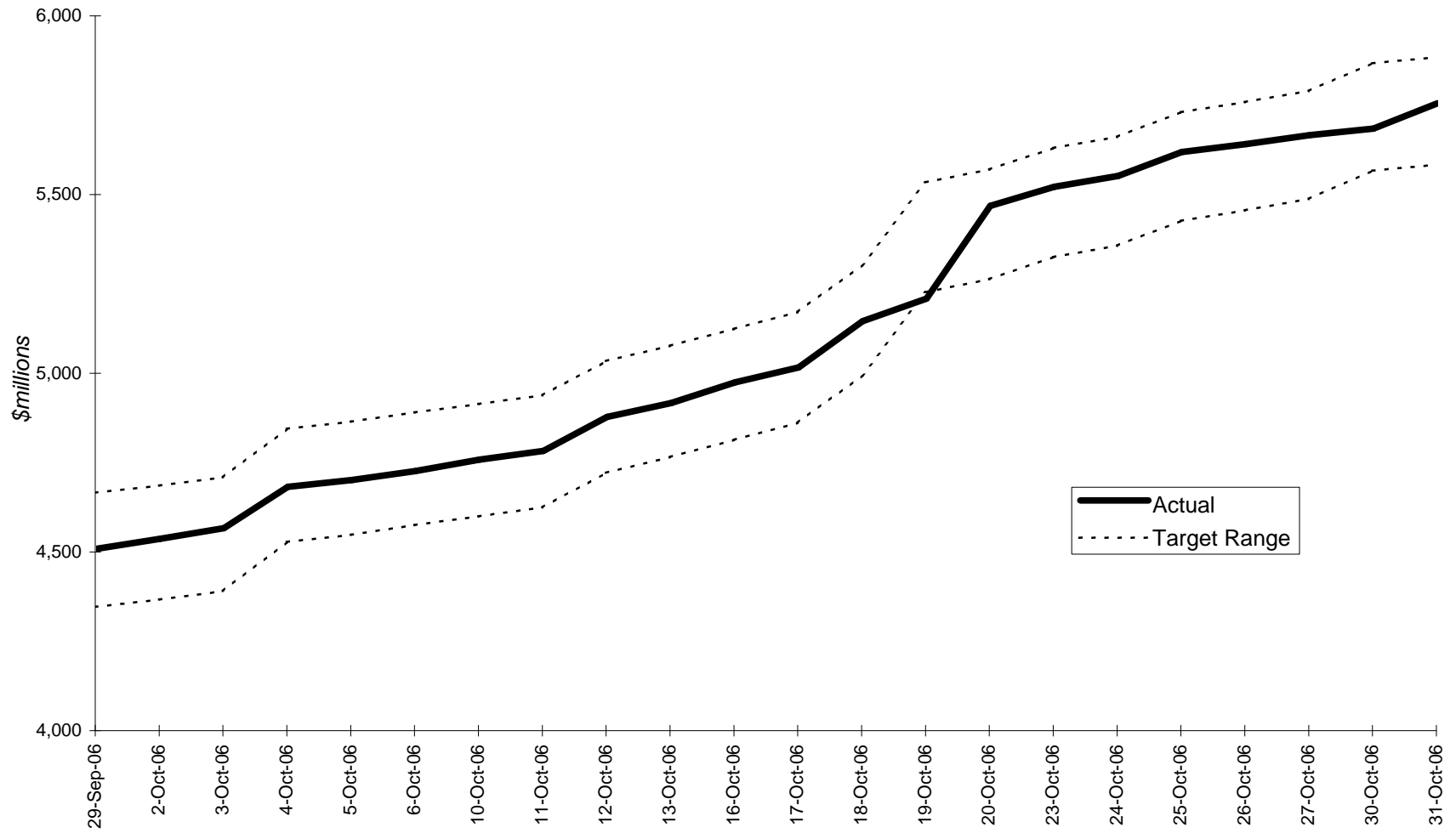
OCTOBER	FY2006	FY2007	CHANGE FY2006- FY2007 AMOUNT	PERCENT
Total Taxes *	\$1,215,980	\$1,244,769	\$28,789	2.4 %
Net Income	715,788	723,171	7,382	1.0
Withholding	659,394	654,796	(4,598)	(0.7)
Total Sales & Use	331,484	358,416	26,932	8.1
Regular Sales	239,905	257,984	18,080	7.5
Net Corporate	(14,236)	(1,202)	13,034	NA
Business Excise				
Banks, Insurance, Public Utilities	38,032	7,937	(30,095)	(79.1)
Other Excises**	144,911	156,447	11,536	8.0
Memo: Corporate and Business Excises Combined	23,796	6,736	(17,060)	(71.7)

YEAR-TO-DATE (JULY - OCTOBER)	FY2006	FY2007	CHANGE FY2006- FY2007 AMOUNT	PERCENT	BENCHMARK YEAR-TO-DATE RANGE (In Millions)
Total Taxes *	\$5,550,842	\$5,748,496	\$197,654	3.6 %	\$5,584 - 5,884
Net Income	3,057,384	3,207,036	149,652	4.9	
Withholding	2,559,736	2,659,580	99,844	3.9	
Total Sales & Use	1,381,829	1,400,191	18,362	1.3	
Regular Sales	965,512	986,588	21,076	2.2	
Net Corporate	277,044	342,083	65,039	23.5	
Business Excise					
Banks, Insurance, Public Utilities	249,096	189,876	(59,220)	(23.8)	
Other Excises**	585,489	609,311	23,821	4.1	
Memo: Corporate and Business Excises Combined	526,139	531,958	5,819	1.1	

* Detail may not add to Total for Budget due to rounding.

** Other Excises includes tax revenue collected by other agencies.

FY2007 Year-to-Date Tax Revenue through Oct. 31, 2006



YTD target range is based on tax revenue estimate of \$18.930 billion (includes \$734 million in MBTA transfer funds).