

Spring 2009 MCAS & Accountability School and District Results: Grades 3-10

Mitchell D. Chester, Commissioner of Elementary and Secondary Education

James Harrington, Mayor, Brockton

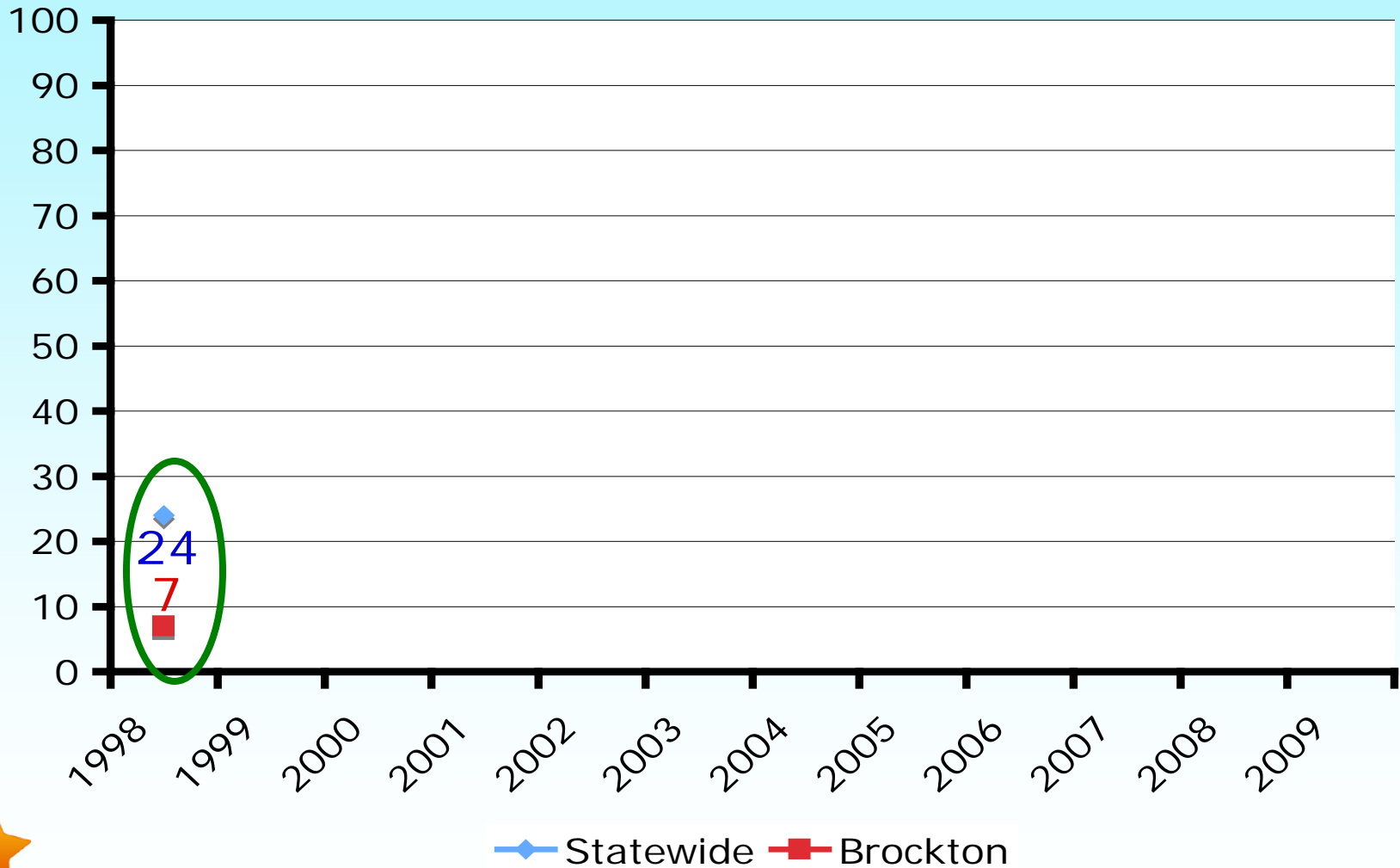
Matthew Malone, Superintendent, Brockton Public Schools

Susan Szachowicz, Principal, Brockton High School

Why are we at Brockton High?

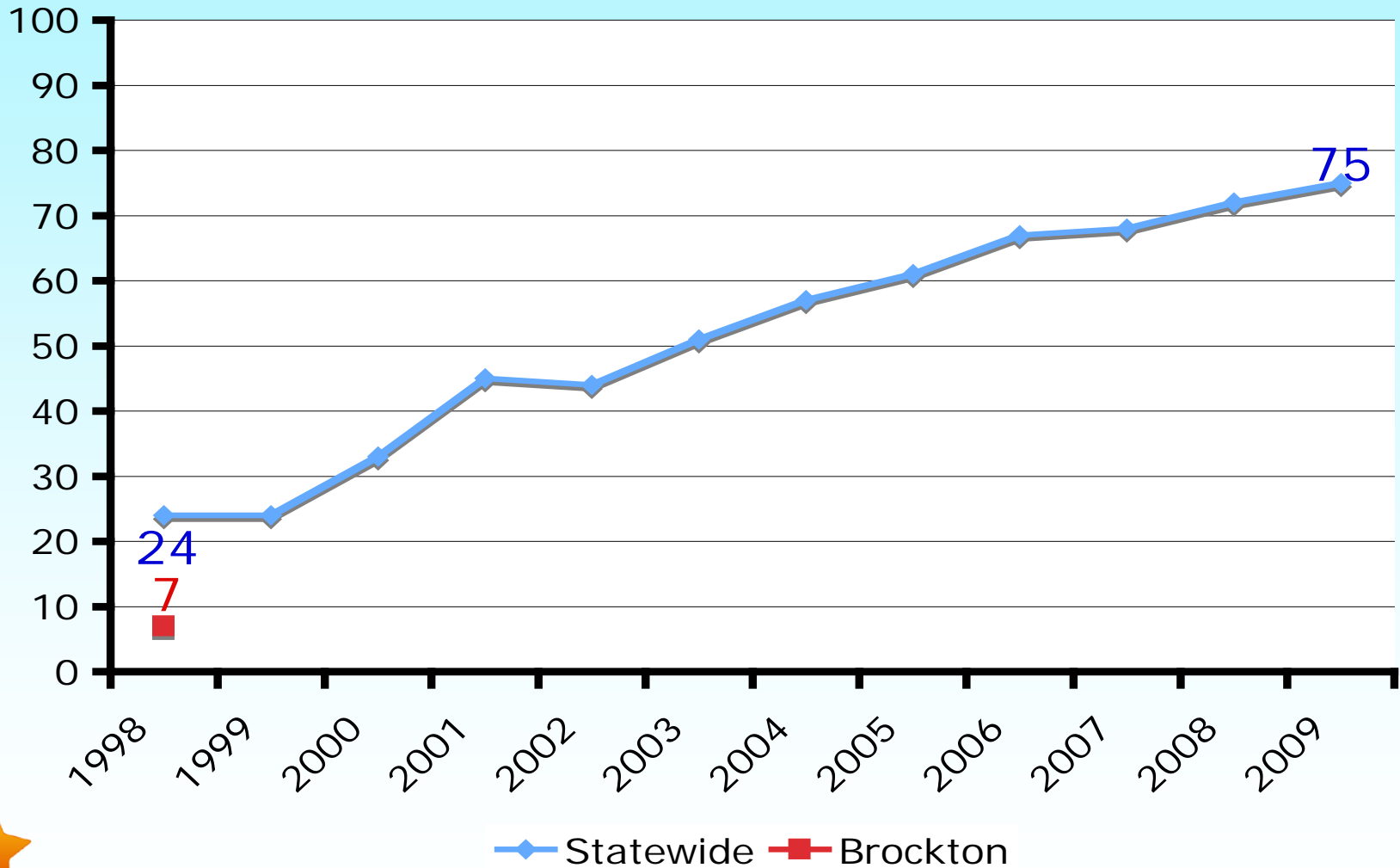
Decade of Progress: Grade 10 MCAS Math

Percent *Proficient* or higher



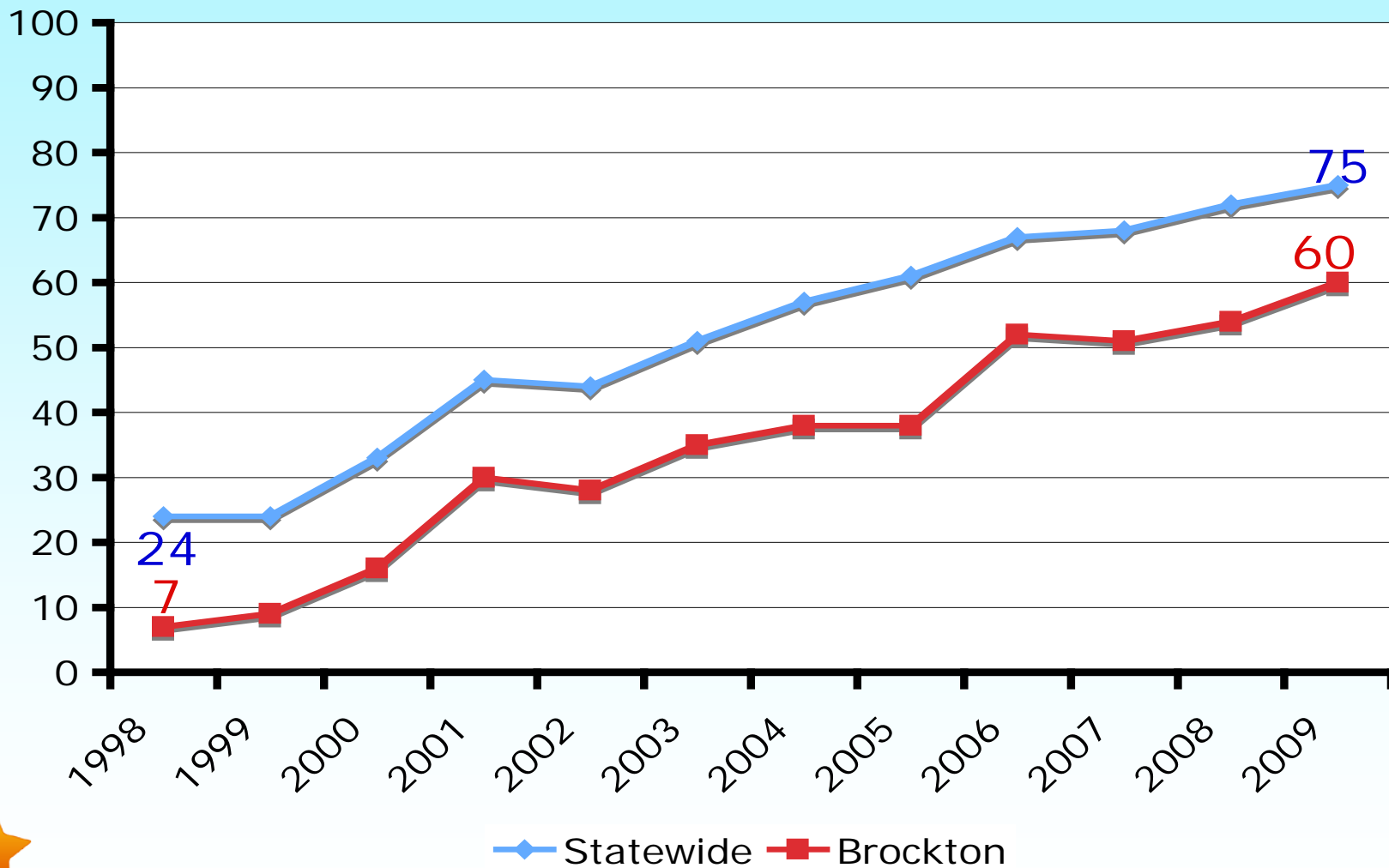
Decade of Progress: Grade 10 MCAS Math

Percent *Proficient* or higher



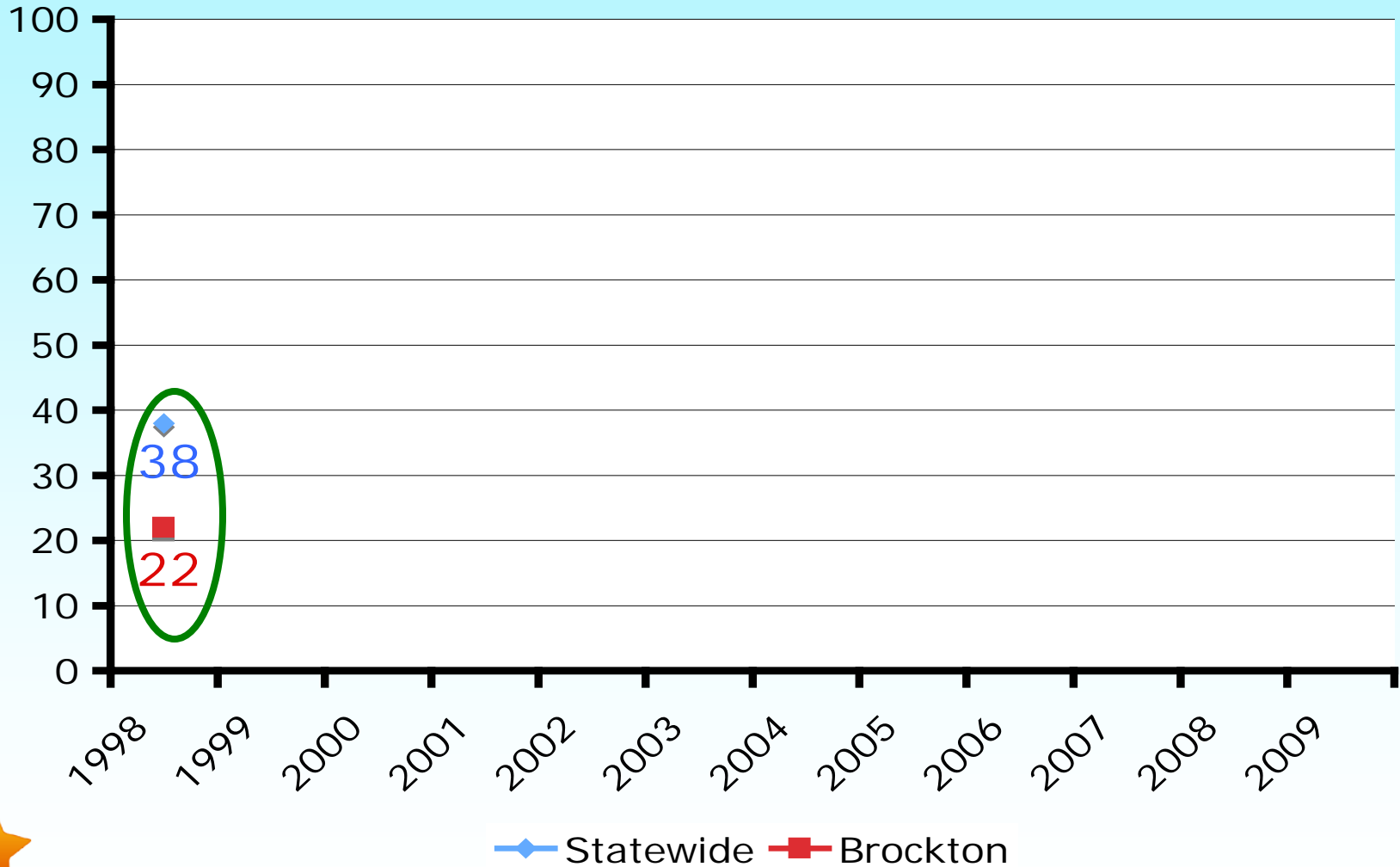
Decade of Progress: Grade 10 MCAS Math

Percent *Proficient* or higher



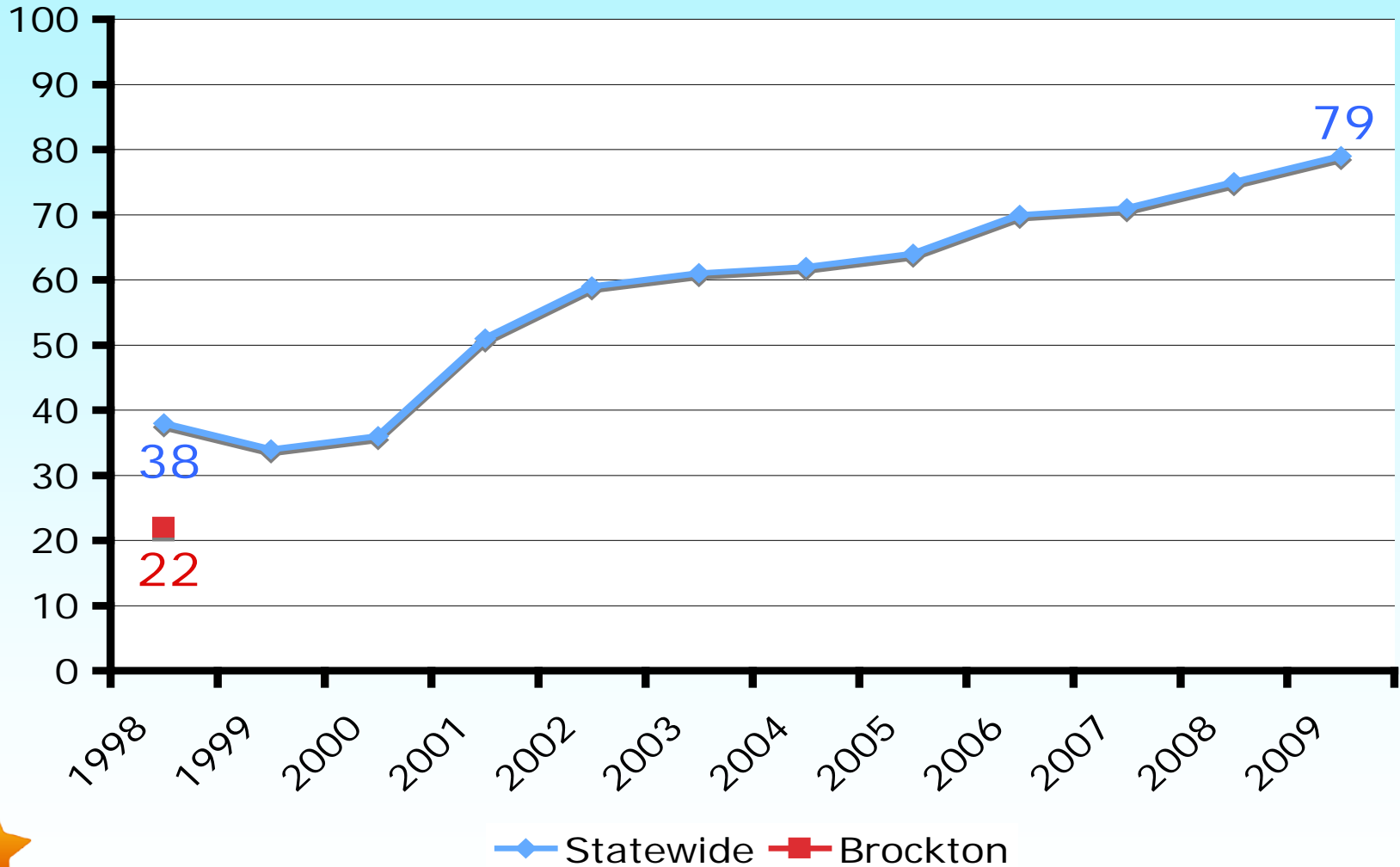
Decade of Progress: Grade 10 MCAS ELA

Percent *Proficient* or higher



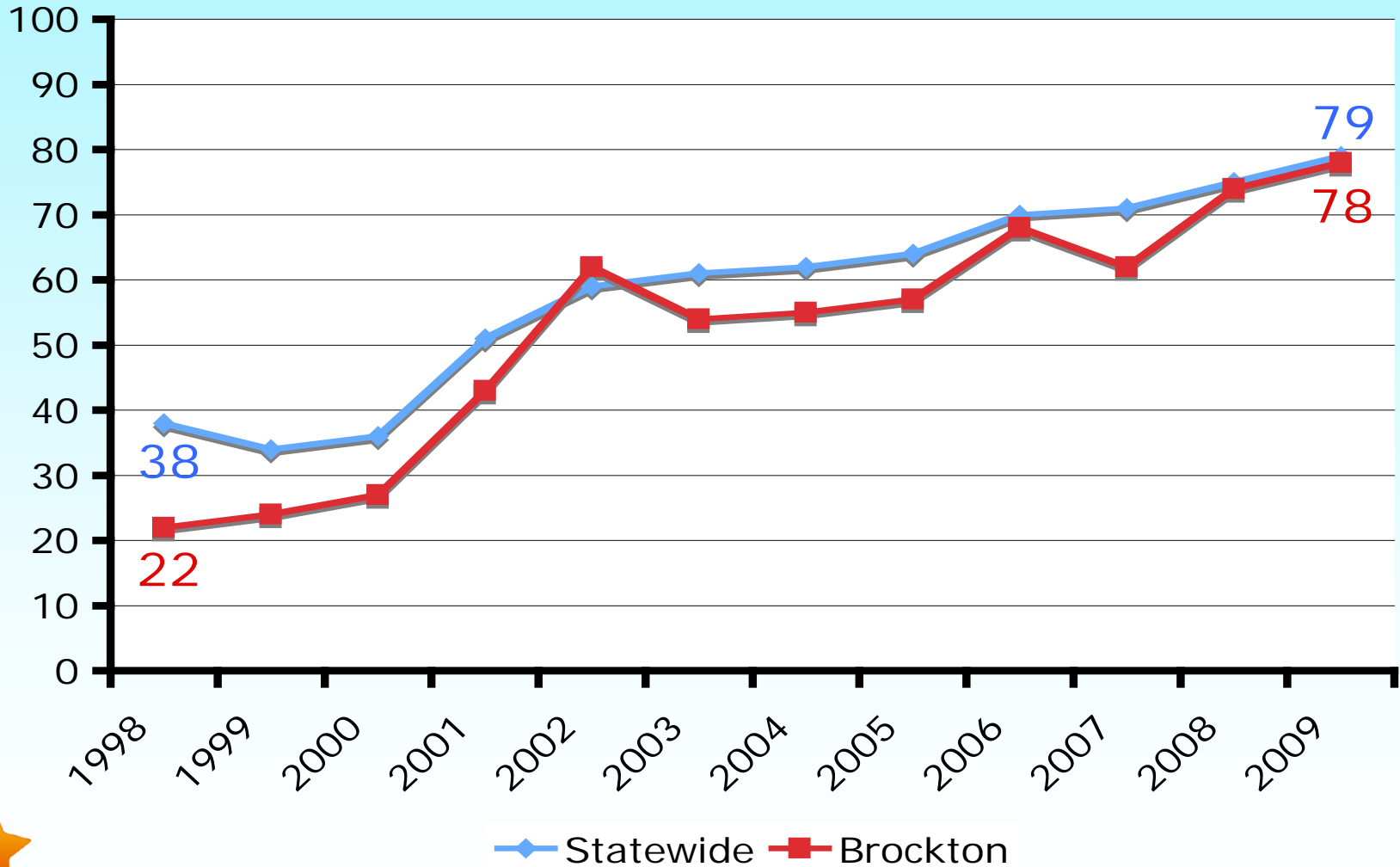
Decade of Progress: Grade 10 MCAS ELA

Percent *Proficient* or higher



Decade of Progress: Grade 10 MCAS ELA

Percent *Proficient* or higher



BHS has made great strides on MCAS

	MCAS Grade 10 Results: 1998-2009					
	Percent of Students Scoring <i>Proficient</i> or Higher					
	1998	2005	2008	2009	Change, 1998 to 2009	Change, 2008 to 2009
Brockton High School						
English Language Arts	22	57	74	78	+56	+4
Mathematics	7	38	54	60	+53	+6
Statewide - Grade 10						
English Language Arts	38	64	75	79	+41	+4
Mathematics	24	61	72	75	+51	+3

% of Brockton High students who have already met the minimum state testing requirements for graduation by scoring Needs Improvement or higher on all three grade 10 MCAS tests:

Class of 2010: 85%

Class of 2011: 75% (after your 1st attempt)

BHS is leading the way

BHS is one of only 8 schools with a low income rate of 60 percent or more where more than 50 percent of students scored Proficient or higher on all three 2009 grade 10 MCAS tests (ELA, Math, Science & Technology/Engineering):

- Boston Preparatory Charter Public School
- MATCH Charter Public High School
- University Park Campus School
- City on a Hill Charter Public School
- Fenway High School
- Revere High School
- Codman Academy



2009 MCAS Highlights

- Grade 10 students' performance improved overall and among groups
- ELA performance improved in most grades and for all groups
- 90% of class of 2010 has already met state's new graduation requirements
- Middle School mathematics needs attention
 - Fewer than half of all students statewide scored *Proficient* or higher in grades 7 and 8
- Some gaps have narrowed slightly, but still remain
- Formerly Limited English Proficient (FLEP) students continue to make strides

2009 MCAS Highlights

- Remarkable turnaround at Grade 10
 - English Language Arts
 - In 1998, 38% scored *Proficient* or higher
 - In 2009, 79% scored *Proficient* or higher
 - Mathematics
 - In 1998, 24% scored *Proficient* or higher
 - In 2009, 75% scored *Proficient* or higher

2009 MCAS Results: Change in Performance

	Percent of Students Scoring <i>Proficient</i> and higher								
	English Language Arts			Mathematics			Science & Tech/Eng.		
	2008	2009	Change	2008	2009	Change	2008	2009	Change
Grade 3	56	56	+1	61	60	-1			
Grade 4	49	54	+5	49	48	-1			
Grade 5	61	63	+2	52	54	+2	50	49	-1
Grade 6	67	66	-1	56	57	+1			
Grade 7	69	70	+1	47	49	+2			
Grade 8	75	78	+3	49	48	-1	39	39	0
Grade 10	75	79	+4	72	75	+3	57	61	+4

Change in District Performance: ELA

	Percent of Districts (2008-2009)			Mean Pct. Point Change (Districts)
	Improved (↑)	No Change (↔)	Declined (↓)	
Grade 3 ELA	44	30	26	+2
Grade 4 ELA	66	20	14	+6
Grade 5 ELA	42	35	22	+2
Grade 6 ELA	27	34	39	-2
Grade 7 ELA	35	33	31	+1
Grade 8 ELA	53	35	12	+4
Grade 10 ELA	74	21	5	+6

↑ Improve = Difference of +3 percentage points or greater in the percent of students scoring at the *Proficient* & *Advanced* levels

↔ No Change = Difference of between -2 and +2 percentage points

↓ Declined = Difference of -3 percentage points or greater

Change in District Performance: Mathematics

	Percent of Districts (2008-2009)			Mean Pct. Point Change (Districts)
	Improved (↑)	No Change (↔)	Declined (↓)	
Grade 3 Math	32	29	39	0
Grade 4 Math	31	28	41	-1
Grade 5 Math	40	31	29	+2
Grade 6 Math	40	26	34	+1
Grade 7 Math	46	23	31	+2
Grade 8 Math	36	27	37	0
Grade 10 Math	45	37	18	+2

↑ Improve = Difference of +3 percentage points or greater in the percent of students scoring at the *Proficient* & *Advanced* levels

↔ No Change = Difference of between -2 and +2 percentage points

↓ Declined = Difference of -3 percentage points or greater

Change in District Performance: STE

	Percent of Districts (2008-2009)			Mean Pct. Point Change (Districts)
	Improved (↑)	No Change (↔)	Declined (↓)	
Grade 5 Science	30	26	43	-2
Grade 8 Science	38	27	35	0
High School Science	63	22	15	+5

↑ Improve = Difference of +3 percentage points or greater in the percent of students scoring at the *Proficient* & *Advanced* levels

↔ No Change = Difference of between -2 and +2 percentage points

↓ Declined = Difference of -3 percentage points or greater

Change in School Performance: ELA

	Percent of Schools (2008-2009)			Mean Pct. Point Change (Schools)
	Improved (↑)	No Change (↔)	Declined (↓)	
Grade 3 ELA	47	20	34	+2
Grade 4 ELA	60	16	24	+5
Grade 5 ELA	44	25	32	+2
Grade 6 ELA	31	28	41	-2
Grade 7 ELA	37	28	35	0
Grade 8 ELA	55	29	16	+4
Grade 10 ELA	70	24	6	+6

↑ Improve = Difference of +3 percentage points or greater in the percent of students scoring at the *Proficient* & *Advanced* levels

↔ No Change = Difference of between -2 and +2 percentage points

↓ Declined = Difference of -3 percentage points or greater

Change in School Performance: Mathematics

	Percent of Schools (2008-2009)			Mean Pct. Point Change (Schools)
	Improved (↑)	No Change (↔)	Declined (↓)	
Grade 3 Math	37	16	46	-1
Grade 4 Math	36	18	46	-1
Grade 5 Math	44	19	37	+1
Grade 6 Math	41	21	38	+1
Grade 7 Math	46	23	31	+2
Grade 8 Math	35	24	41	0
Grade 10 Math	44	39	17	+2

↑ Improve = Difference of +3 percentage points or greater in the percent of students scoring at the *Proficient* & *Advanced* levels

↔ No Change = Difference of between -2 and +2 percentage points

↓ Declined = Difference of -3 percentage points or greater

Change in School Performance: STE

	Percent of Schools (2008-2009)			Mean Pct. Point Change (Schools)
	Improved (↑)	No Change (↔)	Declined (↓)	
Grade 5 Science	35	21	44	-1
Grade 8 Science	41	26	33	0
High School Science	62	25	14	+5

↑ Improve = Difference of +3 percentage points or greater in the percent of students scoring at the *Proficient* & *Advanced* levels

↔ No Change = Difference of between -2 and +2 percentage points

↓ Declined = Difference of -3 percentage points or greater

2009 NCLB Accountability Highlights

- 937 schools (54%) in improvement status in 2009
 - Up from 840 (50%) in 2008
- 109 districts (28%) in improvement status
 - Including 29 charters, 8 voc/techs, and 17 other single-school districts
 - Up from 89 in 2008 (including 26 charters, 6 voc/techs, and 11 other single-school districts)
- 21 schools recognized for exiting accountability status

2009 Schools on NCLB Lists

<i>N = 1722 Schools</i>	#	%
Restructuring - Aggregate	192	11.1
Corrective Action - Aggregate	51	3.0
Identified for Improvement - Aggregate	157	9.1
Subtotal	400	23.2
Restructuring - Subgroups	186	10.8
Corrective Action - Subgroups	93	5.4
Identified for Improvement - Subgroups	258	15.0
Total	937	54.4

2009 Districts on NCLB Lists

<i>N = 386 Districts</i>	#	%
Restructuring - Aggregate	7	1.8
Corrective Action - Aggregate	6	1.6
Identified for Improvement - Aggregate	11	2.8
Subtotal	24	6.2
Restructuring - Subgroups	4	1.0
Corrective Action - Subgroups	40	10.4
Identified for Improvement - Subgroups	41	10.6
Total	109	28.2