

Board of Higher Education Meeting | October 18, 2011

Partnership for the Assessment of Readiness for College and Career (PARCC)



MASSACHUSETTS
Department of
Higher Education

What is PARCC?

- Charged to develop **next-generation assessments linked to common core state standards**
- \$186M RTTT grant
- Two multi-state consortia
 - PARCC
 - Smarter/Balanced
- Massachusetts – lead PARCC state
Florida – fiscal agent
Achieve – project management partner

The PARCC Goals

- **Create** high-quality assessments
- **Build** a pathway to college and career readiness for *all* students
- **Support** educators in the classroom
- **Develop** 21st century, technology-based assessments
- **Advance** accountability at all levels

Four Components of Assessment



**Four components,
spread throughout
the academic year**

- **Two “formative”**
- **Two “summative”**

Four Components of Assessment



1. **Early Assessment**

- “Formative” assessment
- Designed to be an indicator of student knowledge and skills
- Allows instruction, supports and professional development to be tailored to meet student needs

Four Components of Assessment



1. **Mid-Year Assessment**

- “Formative” assessment
- Will comprise performance-based items and tasks, with an emphasis on hard-to-measure standards
- After study, individual states may consider including as a **summative** component

Four Components of Assessment



End-of-Year Assessment (EOY)

- “Summative” assessment
- Administered after ~90% of the school year
- ELA/literacy: Reading comprehension.
- Mathematics: Innovative, machine-scorable items

Four Components of Assessment



Performance-Based Assessment (PBA)

- “Summative” assessment
- Administered as close to the end of the school year as possible
- ELA/literacy: Writing effectively when analyzing text
- Mathematics: Applying skills, concepts, and understandings to solve multi-step problems

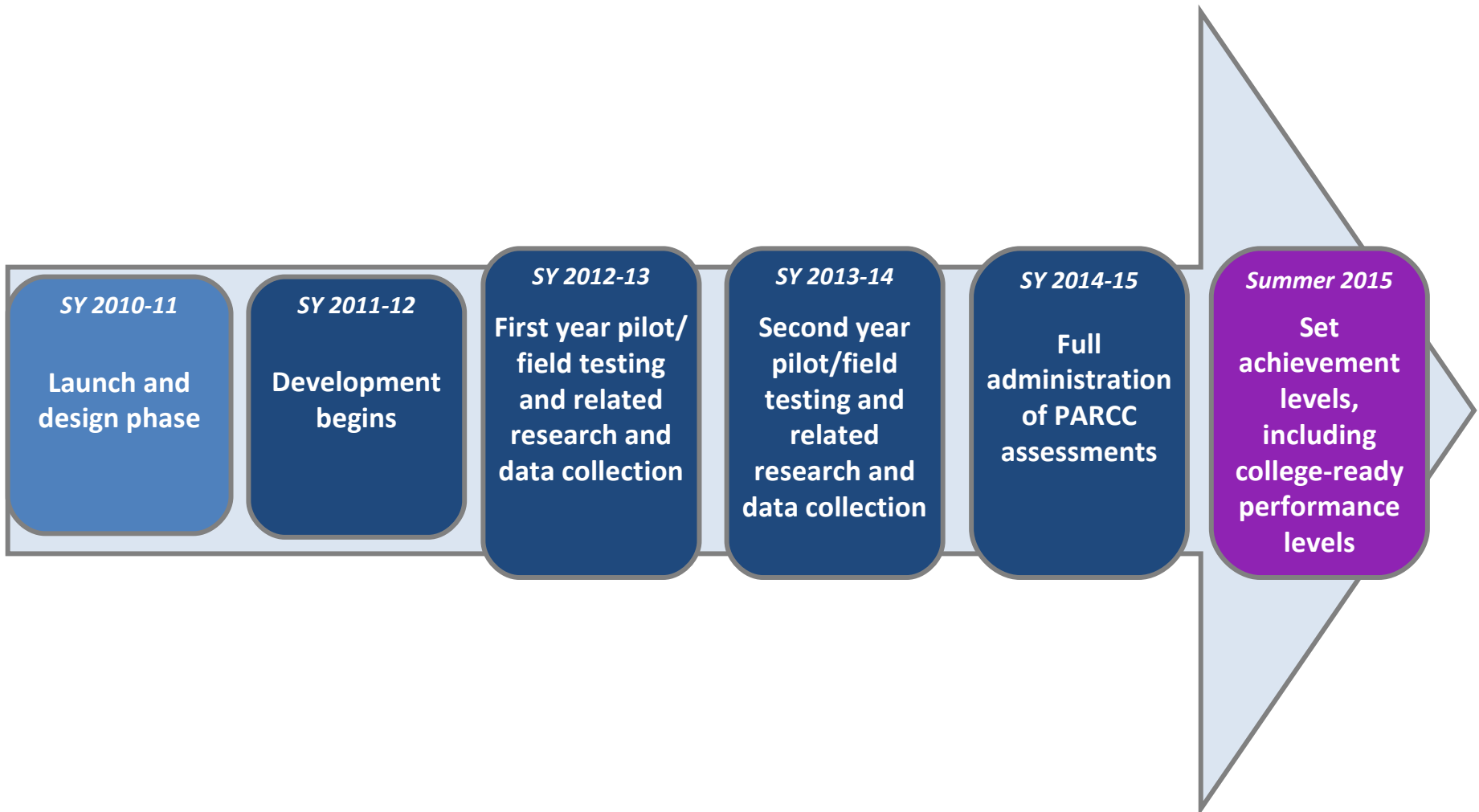
Expected Outcomes

- Two **formative assessment components** designed to:
 - Generate *timely* information for informing instruction, interventions, and professional development during the school year
 - In ELA/literacy, a *third* formative component will assess students' speaking and listening skills
- Two **summative assessment components** designed to:
 - Make "college and career readiness" and "on-track" determinations
 - Measure the full range of standards and full performance continuum
 - Provide data for accountability uses, including measures of growth

Expected Outcomes

- **The PARCC assessments will allow us to make important claims about students' knowledge and skills.**
- **In English Language Arts/literacy,** whether students:
 - Can read and comprehend complex literary and informational text
 - Can write effectively when analyzing text
 - Have attained overall proficiency in ELA/literacy
- **In Mathematics,** whether students:
 - Have mastered knowledge and skills in highlighted domains, e.g.:
 - In grade 4, numbers/fractions
 - In grade 6, proportional reasoning and ratios
 - Have attained overall proficiency in mathematics

PARCC National Assessment Timeline



PARCC Key Challenges

Technical Challenges

- Developing an interoperable technology platform
- Transitioning to a computer-based assessment system
- Developing and implementing automated scoring systems and processes
- Identifying effective, innovative item types

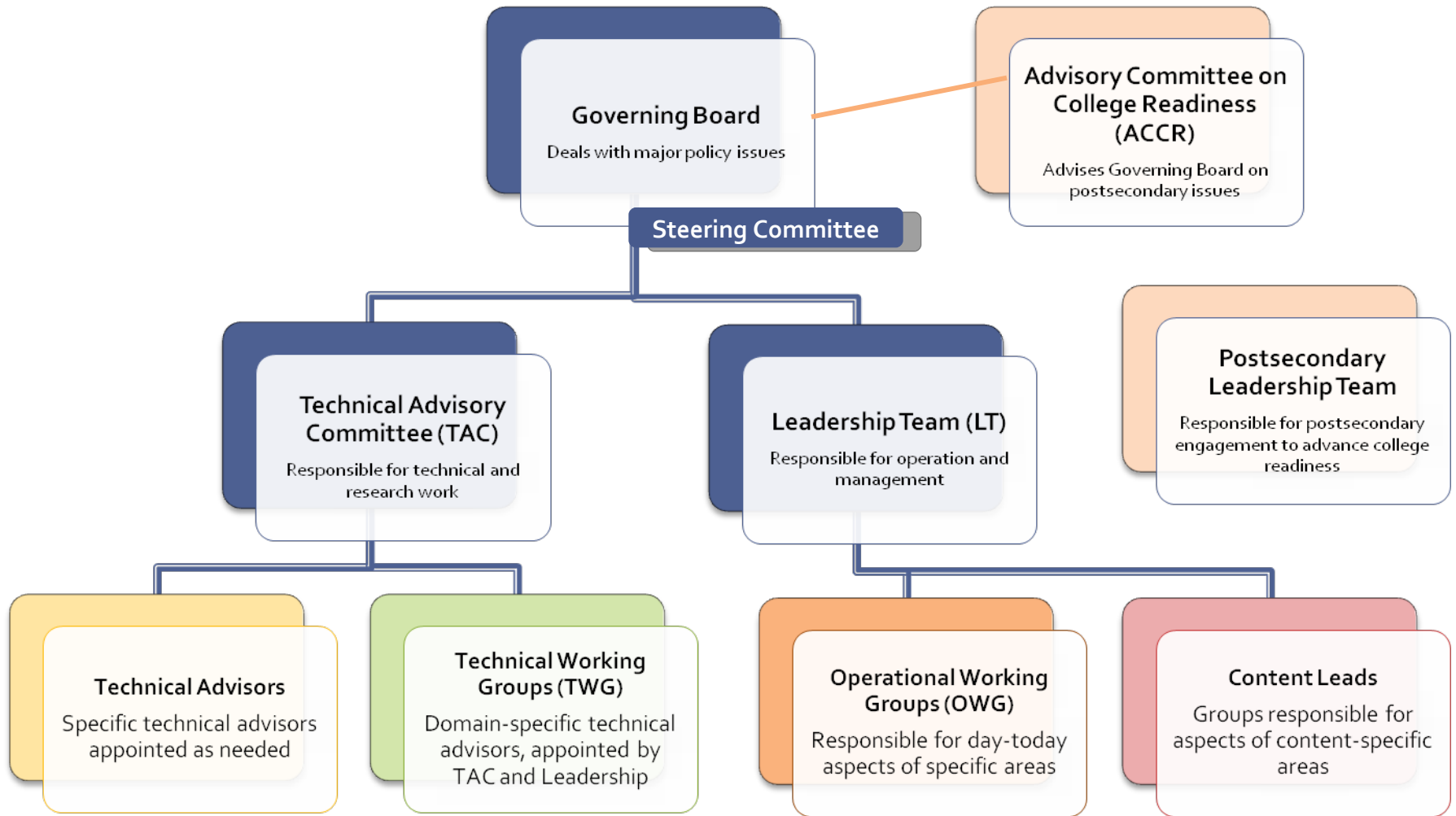
Implementation Challenges

- Estimating costs over time, including long-term budgetary planning
- Transitioning to the new assessments at the classroom level
- Ensuring long-term sustainability

Policy Challenges

- Student supports and interventions
- Accountability
- High school course requirements
- College admissions/ placement
- Perceptions about what these assessments can do

PARCC National Governance



PARCC Massachusetts

- **Massachusetts' role in multi-state initiative:**
 - **Our presidents and chancellors** provided written support for higher education and K-12 education to work collaboratively with the consortium
 - Massachusetts became one of 13 PARCC governing states
 - **Commissioner Chester** named Chair of the PARCC Governing Board
 - **Commissioner Freeland** named Co-Chair of the PARCC Advisory Committee on College Readiness (ACCR)
 - Participation in PARCC and Common Core national working groups and meetings by:
 - **Faculty from all three public higher ed segments**
 - **K-12 school district representatives**
 - **Delegates from the DHE and DESE**

PARCC Launch Conference

- **Scheduled for October 28**
- **Objectives**
 - **To introduce the PARCC initiative** to Massachusetts post-secondary leaders
 - **To convey the impact** of the Common Core State Standards in Massachusetts
 - **To establish the importance** of higher education engagement in the development and implementation of PARCC
 - **To begin formulating** a PARCC higher education /K-12 engagement and outreach strategy in Massachusetts

Questions

Aundrea Kelley: akelley@bhe.mass.edu or (617) 994-6979