

Central Intelligence Unit Security Threat Group Report December 2011

Top 3 STGS

1. Latin Kings—531
2. Bloods—373
3. Neta—333



Aryan Brotherhood

Jurisdiction Population

An individual is considered to be under Massachusetts DOC jurisdiction when the Commonwealth has legal authority over the individual regardless of where the inmate is being held.

A **Security Threat Group (STG)** is defined as groups, gangs or inmate organizations that have been determined to be acting in concert so as to pose a threat or potential threat to the safety of the public, the staff or the secure orderly operation of an institution or are predatory upon other inmates. Security Threat Group status is established by the Commissioner based upon the security concerns generated by the group's activities and or history.

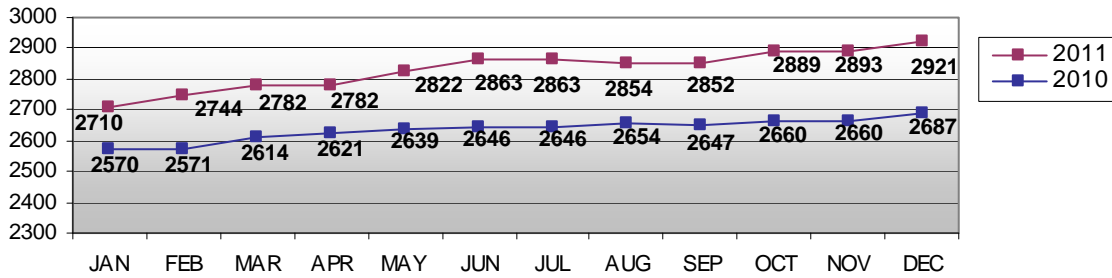
Security Threat Group (STG) Member – An inmate, identified by staff through intelligence information or by some other means, who is determined to be associated with a known security threat group.

Disassociation - Inmates identified as an STG member, may disassociate affiliation and activities while incarcerated at any time.

The identification of inmates as members of an STG is normally initiated at the institutional level and based upon the following criteria:

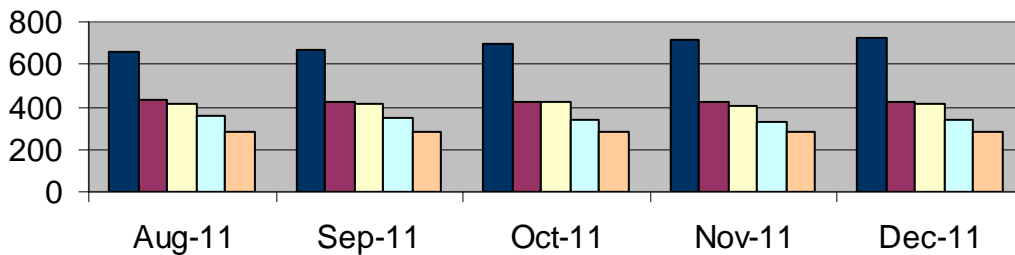
- Self admission by inmate
- Information received from outside law enforcement/criminal Justice agency
- Use and/or possession of group paraphernalia or identifiers
- Group related photo
- Known group tattoo or marking
- Information from reliable/confidential informants
- Victim/target affiliated with/member of rival group
- Possession of documents
- Named in documents as member or names as associate
- Possession of publications
- Participation in publications
- Court Documents
- Published news accounts
- Contact with known associates/members/suspected members
- Observed association
- Membership documents
- Information developed during investigation and/or surveillance

**Snapshot Data
Total Number of STG Inmates 2010 and 2011**



*Accurate data not available for APR and JUL, estimates shown

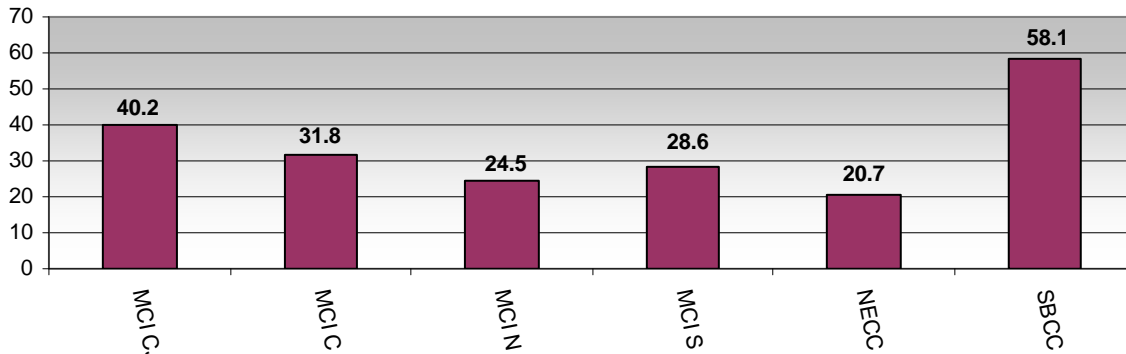
**Snapshot Data
STG Institution Totals**



	Aug-11	Sep-11	Oct-11	Nov-11	Dec-11
■ SBCC	662	664	694	718	726
■ MCI-S	432	428	426	419	420
■ MCI-C	418	418	421	404	414
■ MCI-N	354	352	340	332	342
■ MCI-CJ	285	282	283	282	286

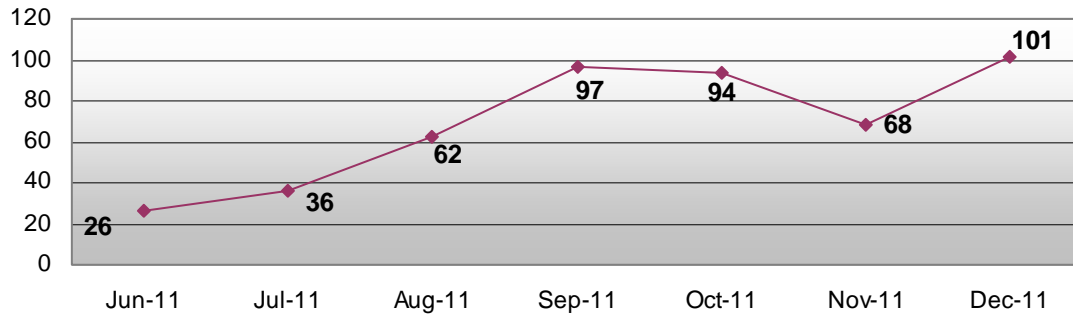
*Facilities with less than 200 Inmates not shown

STG Members by Percent of Institution Population- DEC 2011



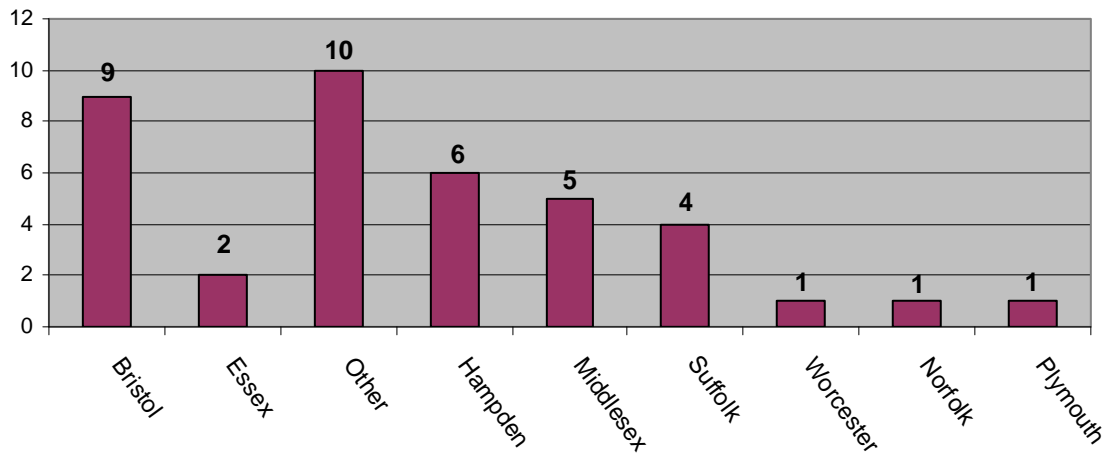
*Facilities with less than 20% not shown.

STG Admissions



*Booking screens are reviewed and compared to the Intelligence Database to form STG Admissions

Released STG Inmates by County - DEC 2011



*Other—Releases to other jurisdictions or release address unknown.

STG By Gender

