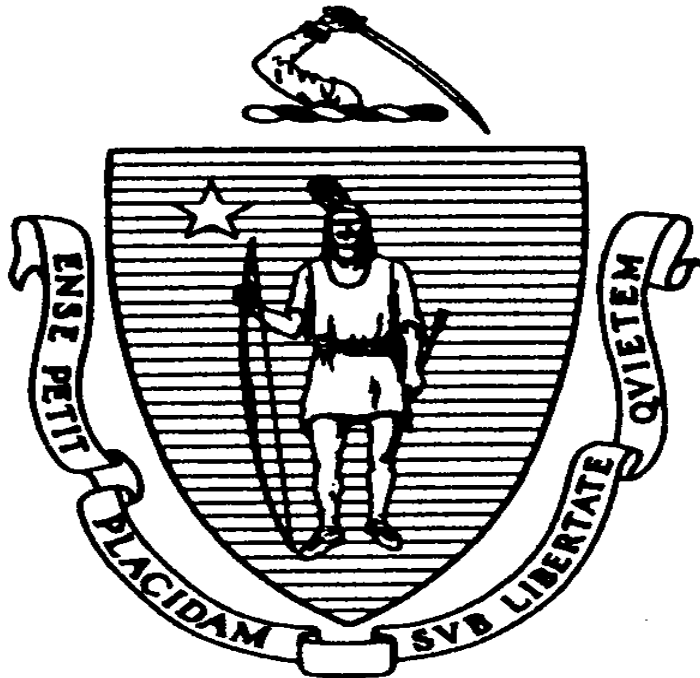


1998 Court Commitments to the Massachusetts Department of Correction

Massachusetts Department of Correction



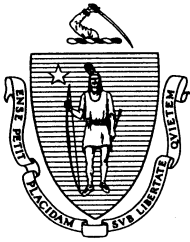
A. Paul Cellucci
Governor

Jane Perlov
Secretary of Public Safety

Michael T. Maloney
Commissioner

Kathleen M. Dennehy
Deputy Commissioner

October 1999



Author:
Research and Planning Division

Prepared by:
Mohamed Sesay

Rhiana Kohl, Ph.D., Director

**Massachusetts Department of Correction
Research and Planning Division**

MCI-Concord/SFU Building
PO Box 9125
Concord, MA 01742
(617) 727-8857 (phone)
(617) 727-0839 (fax)
www.state.ma.us/doc/
research@doc.state.ma.us

Acknowledgments

The publication of this report would not be possible without the assistance of many divisions and individuals within the Department of Correction. The Research and Planning would like to thank staff member Barbara Ann Hartwell for her work on data cleaning for this project. Thank you also to the Department of Correction's Central and Institutional Records and Programming staff for providing Research staff access to the necessary paper and automated files used to produce this report.

This report is accessible on the DOC website at www.state.ma.us/doc/ and is also available at the following libraries: Massachusetts State Library; Library of Congress, Washington D.C.; Boston Public Library; University of Massachusetts, Amherst; Springfield City Library; and Worcester Public Library.

If you have any questions regarding this report, please contact the Research and Planning Division.

Publication No. 18076-40-75-11/99-3.13 C.R.

Executive Summary

The total number of criminally sentenced, new court commitments to the Department of Correction during 1998 was 2,856. The breakdown by gender was 1,923 males (67% of total number of commitments) and 933 females (33% of total commitments). The largest racial/ethnic group represented was Caucasian (45%), followed by Hispanic (27%) and African American (27%). The mean (average) and median age of 1998 commitments was 32 and 31 years respectively with a range of 15 to 71 years. The mean and median age for males was 31 and 29 years respectively, while the mean and median age for females was 33 years.

Thirty-one percent of 1998 commitments were incarcerated for a Person offense, 31% for a Drug offense, 16% for a Property offense, eight percent for a Sex offense, and 13% for Other offenses.

Highlights

- ⇒ The total number of commitments (N=2,856) during 1998 represents the smallest new court commitment population since 1989.
- ⇒ The total number of commitments during 1998 represents a four percent decrease from the previous year and a continued downward trend.
- ⇒ In 1998, 56 percent of the DOC commitments were between the ages of 25 and 39 years. Twenty-five percent of commitments to the DOC were inmates under 25 years old. The remaining 19 percent were 40 years and older.
- ⇒ The race and ethnic rate have been fluctuating since 1994. This year's racial and ethnic breakdown shows a 10% decrease in Caucasian inmates and 5% increase in African American inmates committed from the previous year.
- ⇒ The number of commitments to the DOC for violent offenses (Person and Sex) decreased 17 percent (1,357 to 1,121) between 1994 and 1998, while commitments to DOC for Drug offenses increased 10 percent (807 to 888) over the same period.
- ⇒ The percent of violent offenses remained constant, while the percent of Drug offenses increased slightly from 1997 to 1998.
- ⇒ The number of commitments for Life sentences has fluctuated since 1994. The total number of Lifers represents an average growth rate of approximately two percent every year since 1994.
- ⇒ Commitment s with minimum and maximum sentences of less than 5 years increased 70% (765 to 1,303) and 76% (999 to 1,757) respectively from 1994 to 1998. Also, commitments with minimum and maximum sentences of 5 to less than 10 years decreased 53% (991 to 467) and 35% (1,134 to 737) respectively over the period covered in this report.
- ⇒ Ninety percent of new court commitments to the DOC in 1998 fall under the Truth-in-Sentencing legislation affecting offenses committed after June 30, 1994.

Table of Contents

Acknowledgments	ii
Executive Summary	iii
Table of Contents	iv
Introduction	v
Demographic Characteristics of DOC 1998 Commitment Population	1
Figure 1: DOC Commitments, 1989 to 1998	2
Table 1: Commitments by Gender, 1994 to 1998.....	3
Figure 2: Commitments by Gender, 1994 to 1998	3
Table 2: Race/Ethnicity, 1994 to 1998.....	4
Figure 3: Race/Ethnicity 1994 to 1998	4
Table 3: Race/Ethnicity by Gender.....	5
Figure 4: Race/Ethnicity: Male.....	5
Figure 5: Race/Ethnicity:Female.....	5
Table 4: Age at Incarceration, 1994 to 1998	6
Figure 6: Age at Incarceration, 1994 to 1998.....	6
Table 5: Age at Incarceration by Gender	7
Table 6: Marital Status (Self-Reported) by Gender	8
Table 7: Religion (Self-Reported) by Gender	8
Current Offense	9
Table 8: Current Offense Categories, 1994 to 1998	10
Figure 7: Current Offense Categories, 1994 to 1998	10
Table 9: Current Offense Categories by Gender	11
Figure 8: Current Offense Categories: Male	11
Figure 9: Current Offense Categories: Female.....	11
Table 10: Person Offenses by Gender.....	12
Table 11: Sex Offenses by Gender	13
Table 12: Property Offenses by Gender.....	14
Table 13: Drug Offenses by Gender	15
Table 14: Other Offenses by Gender	16
Sentencing	17
Table 15: Minimum Sentence, 1994 to 1998	18
Figure 10: Minimum Sentence, 1994 to 1998	18
Table 16: Minimum Sentence by Gender.....	19
Table 17: Maximum Sentence, 1994 to 1998.....	20
Figure 11: Maximum Sentence, 1994 to 1998	20
Table 18: Maximum Sentence by Gender.....	21
Table 19: Life Sentences, 1994 to 1998.....	22
Figure 12: Life Sentences, 1994 to 1998	22
Table 20: Court From Which Committed by Gender	23
Table 21: County of Court from Which Committed by Gender.....	24
Table 22: Sentence Type by Gender	24
Table 23: Sentence Count by Gender.....	25
Table 24: Truth in Sentencing Indicator by Gender	25
Figure 13: Truth in Sentencing: Male.....	25
Figure 13: Truth in Sentencing: Female.....	25
Glossary	26
Appendix	30

Introduction

This report presents a statistical description of individuals committed by the courts as a result of a criminal offense to the Massachusetts Department of Correction (DOC) during 1998.

Excluded from this report are individuals who were civilly committed to the Massachusetts Department of Correction facilities during 1998, as well as inmates received to await trial or be detained. Also, excluded are parole and probation violators that are admitted during the year.

The information in this report is a subset of the inmate population in DOC facilities. All new court commitments and those individuals who began serving new sentences during the year are included in this report. If an individual is committed to the Department more than once during 1998, each court commitment for that individual is counted separately. Some categories of offenders are not included in this report: those who began serving “B” and “C” sentences during 1998 (sentences received for crimes committed on parole).

This year, in an effort to convey information in a timely manner, the DOC opted to present the information more concisely. Therefore, minimal descriptive text is included, mostly data in the form of tables and charts with corresponding numbers, percentages and graphs are presented.

The tables that follow contain information on personal background characteristics, current offense, and sentencing for these individuals. Information is also reported on trends in the commitment population over the last five years, 1994 to 1998.

The data contained in these tables were derived from the inmate database maintained by the Department of Correction VAX system. Please note that much of the personal background data of the offenders are self-reported. Also, individuals may be incarcerated for multiple offenses. The offense reported is that which is associated with the sentence that governs the inmate’s latest discharge date. Due to rounding percentage totals may not add up to 100 percent in all tables.

Please note that the glossary at the end of this report contains explanations of certain terms used in this report.

Demographic Characteristics
of DOC 1998 Commitment Population

Figure 1

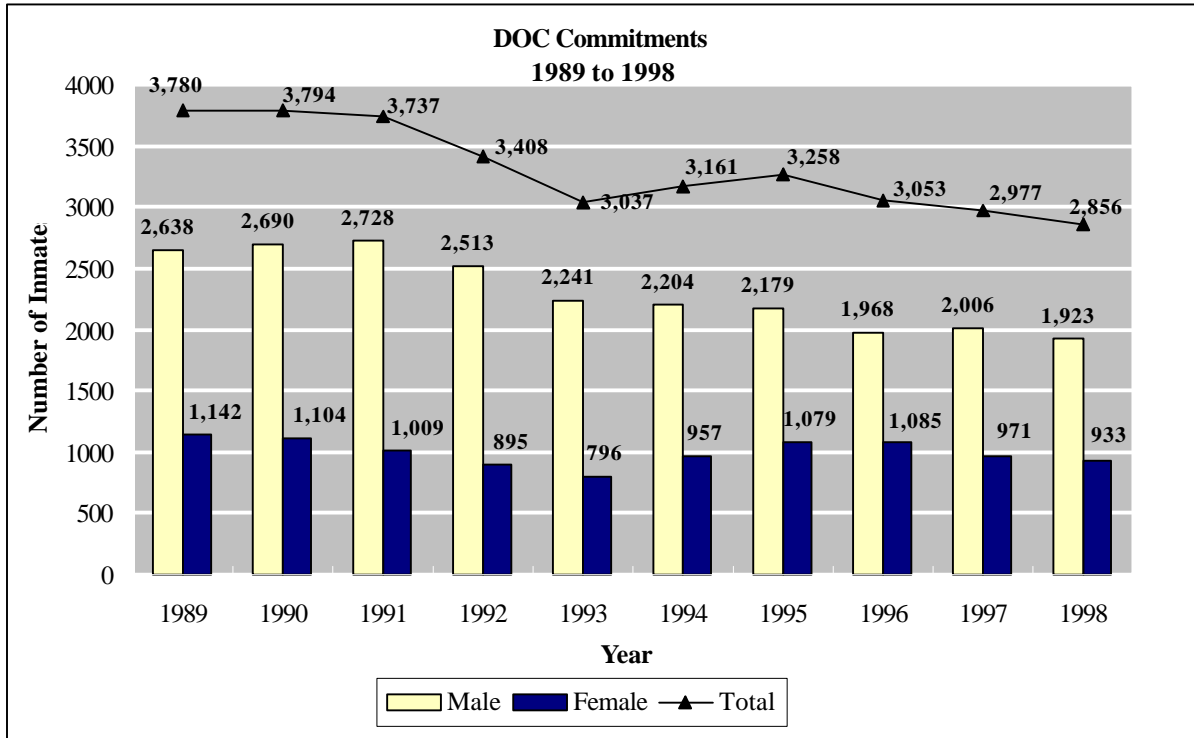


Table 1

Commitments by Gender, 1994 to 1998

	1994		1995		1996		1997		1998		% Chng 97 vs 98
	N	%	N	%	N	%	N	%	N	%	%
Male	2,204	70	2,179	67	1,968	64	2,006	67	1,923	67	-4
Female	957	30	1,079	33	1,085	36	971	33	933	33	-4
Total	3,161	100	3,258	100	3,053	100	2,977	100	2,856	100	-4

Figure 2

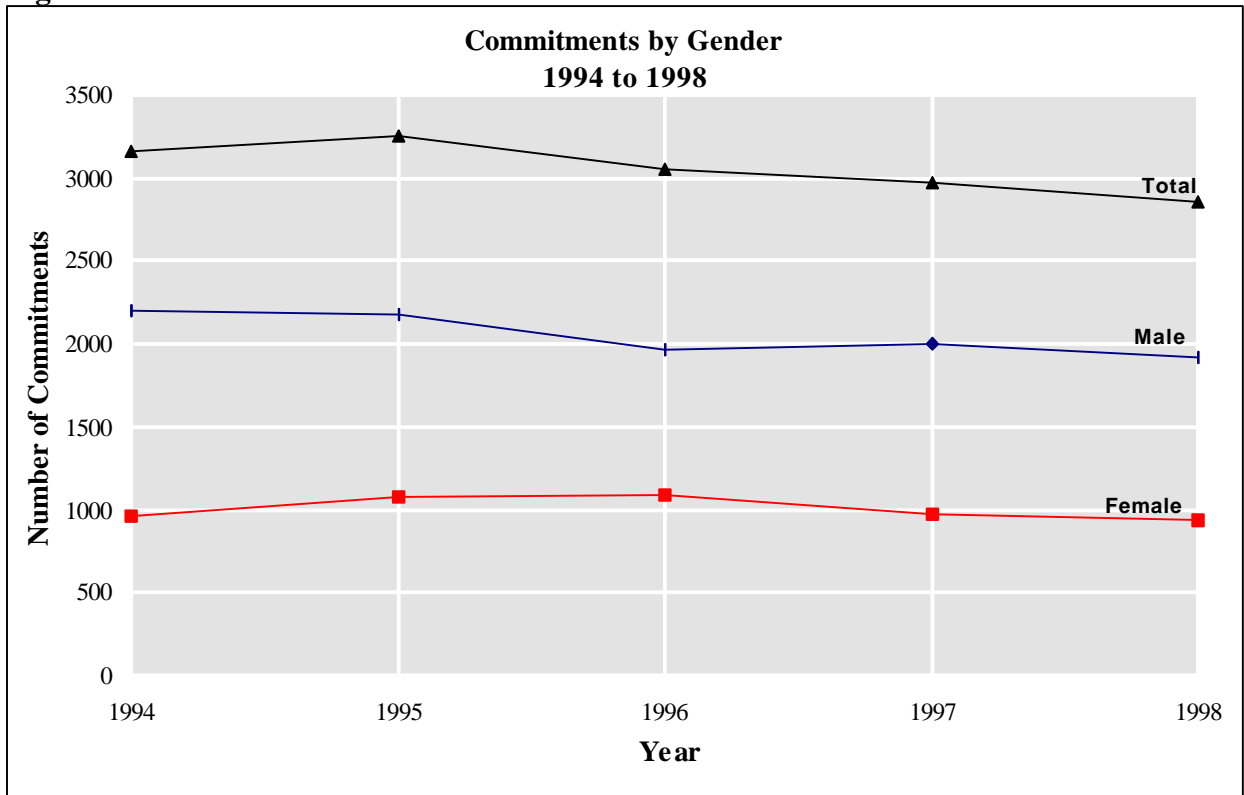


Table 2

Race/Ethnicity, 1994 to 1998

	1994		1995		1996		1997		1998		% Chng 97 vs 98
	N	%	N	%	N	%	N	%	N	%	
Caucasian	1,567	50	1,614	50	1,391	46	1,412	47	1,273	45	-10
African American	898	28	838	26	787	26	740	25	777	27	5
Hispanic	674	21	754	23	834	27	774	26	776	27	0
Native American	4	0	12	0	18	1	6	0	0	0	-100
Asian	18	1	39	1	23	1	45	2	30	1	-33
Other	0	0	1	0	0	0	0	0	0	0	0
Total	3,161	100	3,258	100	3,053	100	2,977	100	2,856	100	-4

Figure 3

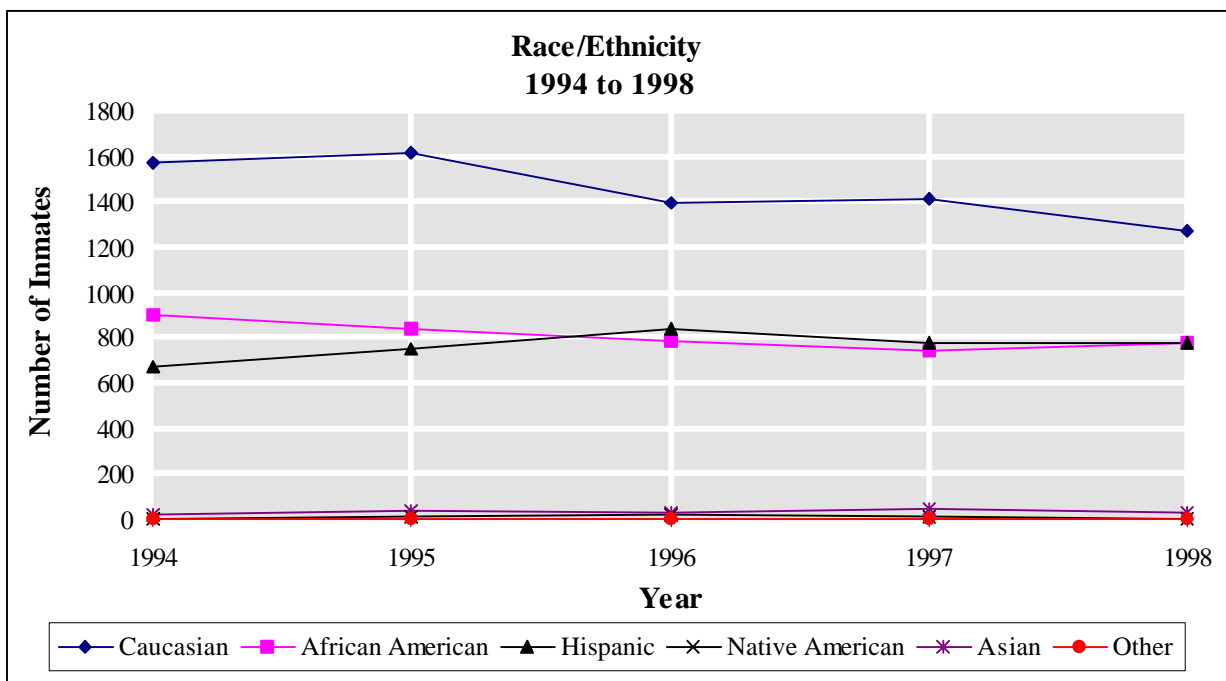


Table 3

Race/Ethnicity by Gender

	Female	(%)	Male	(%)	Total	(%)
Caucasian	624	67	649	34	1,273	45
African American	149	16	628	33	777	27
Hispanic	157	17	619	32	776	27
Asian	3	0	27	1	30	1
Native American	0	0	0	0	0	0
Total	933	100	1,923	100	2,856	100

Figure 4

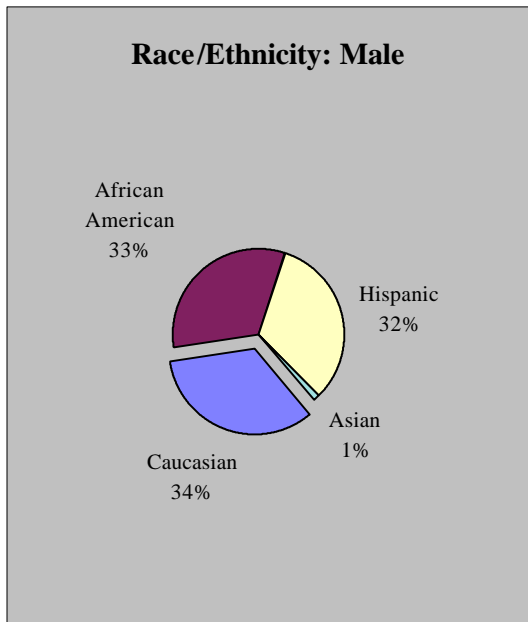


Figure 5

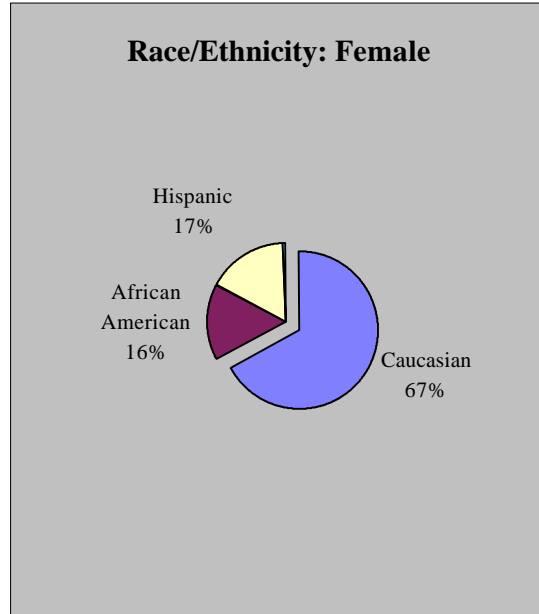


Table 4

Age at Incarceration, 1994 to 1998

	1994		1995		1996		1997		1998		% Chng 97 vs 98	
	N	%	N	%	N	%	N	%	N	%		%
19 Yrs or Younger	207	7	235	7	181	6	185	6	203	7		10
20 to Less Than 30 Yrs	1,388	44	1,384	42	1,235	40	1,119	38	1,099	38		-2
30 to Less Than 40 Yrs	1,122	35	1,171	36	1,136	37	1,172	39	1,019	36		-13
40 to Less Than 50 Yrs	334	11	361	11	391	13	398	13	417	15		5
50 to Less Than 60 Yrs	88	3	82	3	86	3	90	3	94	3		4
60 Yrs or Older	22	1	25	1	24	1	13	0	24	1		85
Total	3,161	100	3,258	100	3,053	100	2,977	100	2,856	100		-4

Figure 6

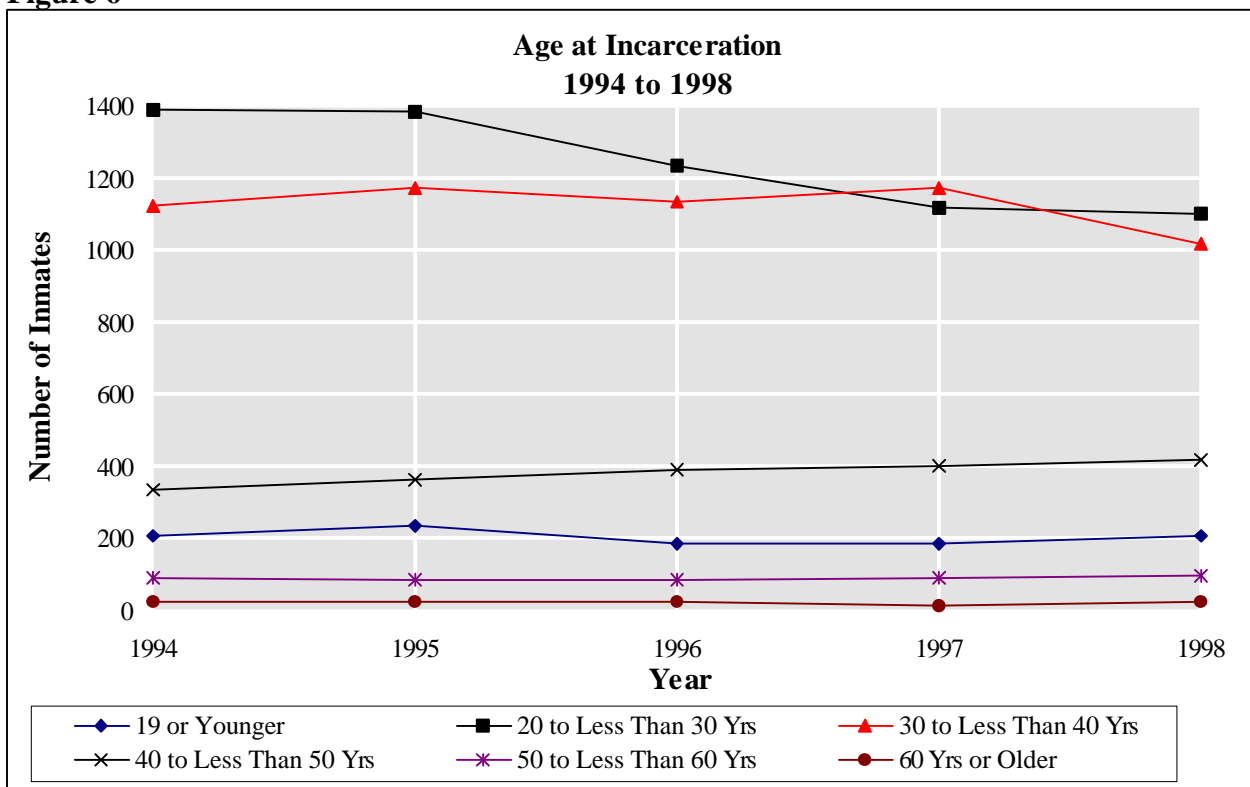


Table 5

Age at Incarceration by Gender

	Female	(%)	Male	(%)	Total	(%)
15 Yrs	0	0	1	0	1	0
16 Yrs	0	0	3	0	3	0
17 Yrs	3	0	16	1	19	1
18 Yrs	16	2	64	3	80	3
19 Yrs	7	1	93	5	100	4
20 Yrs	15	2	85	4	100	4
21 Yrs	19	2	81	4	100	4
22 Yrs	27	3	88	5	115	4
23 Yrs	19	2	76	4	95	3
24 Yrs	24	3	84	4	108	4
25 to 29 Yrs	191	20	390	20	581	20
30 to 34 Yrs	211	23	335	17	546	19
35 to 39 Yrs	206	22	267	14	473	17
40 to 44 Yrs	114	12	161	8	275	10
45 to 49 Yrs	57	6	85	4	142	5
50 to 54 Yrs	15	2	43	2	58	2
55 to 59 Yrs	8	1	28	1	36	1
60 to 64 Yrs	1	0	16	1	17	1
65 to 69 Yrs	0	0	5	0	5	0
70 Yrs or Older	0	0	2	0	2	0
Total	933	100	1,923	100	2,856	100

Age at Incarceration

The mean and median age was **31.6** and **31** years respectively (for all commitments).

The mean and median age for males was **30.8** and **29** years respectively.

The mean and median age for females was **33.2** and **33** years respectively.

Age at Incarceration Ranges:

Females - **17** years to **61** years.

Males - **15** years to **71** years.

Table 6

Marital Status (Self-Reported) by Gender

	Female (%)		Male (%)		Total (%)	
Married	127	14	315	16	442	15
Single	548	59	1,326	69	1,874	66
Divorced	143	15	158	8	301	11
Widowed	35	4	17	1	52	2
Partner-Livein	0	0	19	1	19	1
Separated	76	8	45	2	121	4
Not Reported	4	0	43	2	47	2
Total	933	100	1,923	100	2,856	100

Table 7

Religion (Self-Reported) by Gender

	Female (%)		Male (%)		Total (%)	
Christian	847	91	1,460	76	2,307	81
Agnostic	9	1	296	15	305	11
Muslim	0	0	72	4	72	3
Atheist	28	3	24	1	52	2
Jewish	7	1	4	0	11	0
Buddhist	2	0	18	1	20	1
Not Reported	40	4	49	3	89	3
Total	933	100	1,923	100	2,856	100

Current Offense

Table 8

Current Offense Categories, 1994 to 1998

	1994		1995		1996		1997		1998		% Chng 97 vs 98
	N	%	N	%	N	%	N	%	N	%	%
Person	1,092	35	1,084	33	954	31	932	31	897	31	-4
Sex	265	8	262	8	225	7	247	8	224	8	-9
Property	611	19	570	17	516	17	526	18	468	16	-11
Drug	807	26	831	26	893	29	852	29	888	31	4
Other	386	12	511	16	465	15	420	14	379	13	-10
Total	3,161	100	3,258	100	3,053	100	2,977	100	2,856	100	-4

Figure 7

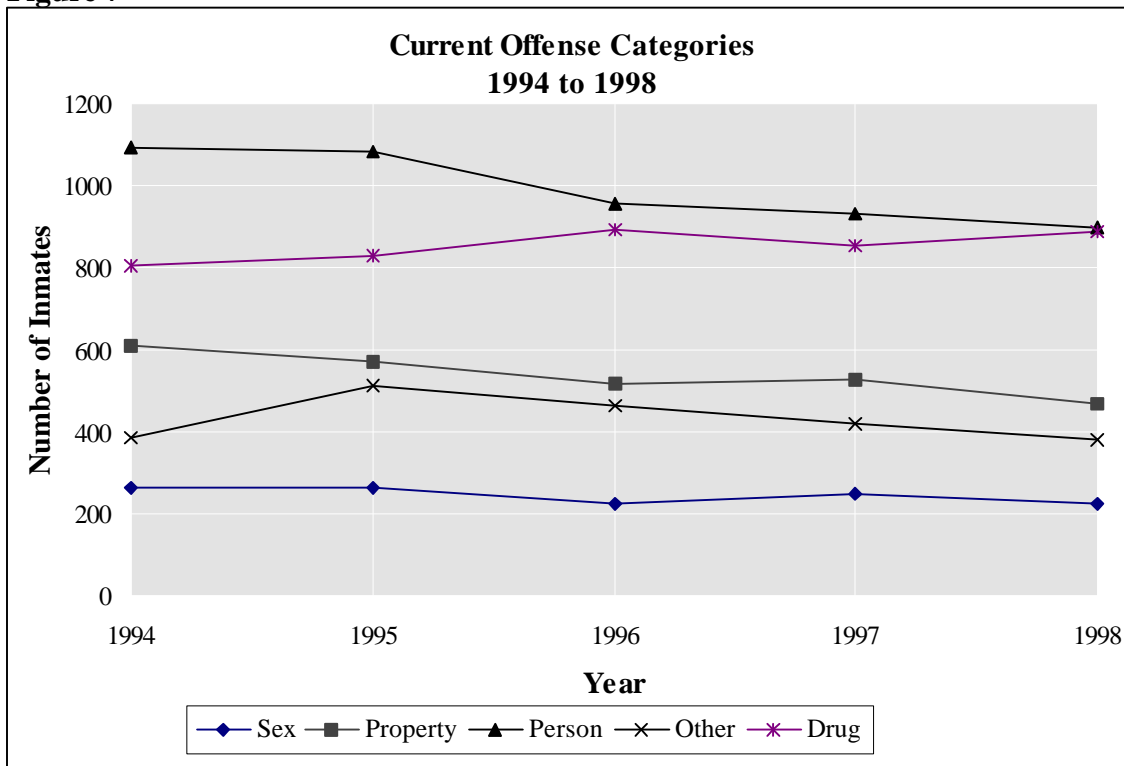


Table 9

Current Offense Categories by Gender

	Female	(%)	Male	(%)	Total	(%)
Person	143	15	754	39	897	31
Sex	7	1	217	11	224	8
Property	244	26	224	12	468	16
Drug	241	26	647	34	888	31
Other	298	32	81	4	379	13
Total	933	100	1,923	100	2,856	100

Figure 8

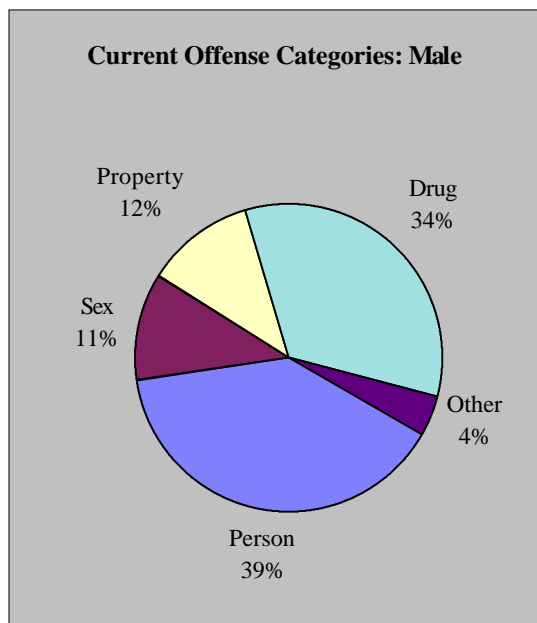


Figure 9

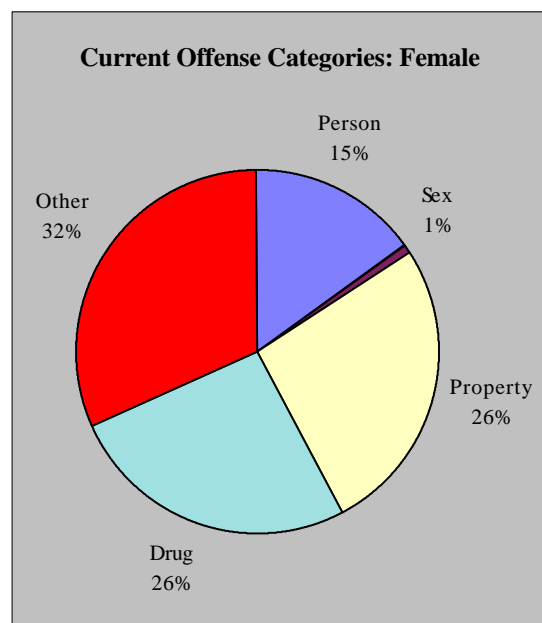


Table 10

Person Offenses by Gender

	Female (%)		Male (%)		Total (%)	
Armed Robbery	8	6	212	28	220	25
A&B Dangerous Weapon	45	31	120	16	165	18
Armed Asslt w/Int to Rob/Murder	3	2	94	12	97	11
Unarmed Robbery	5	3	61	8	66	7
Assault/ A&B	54	38	7	1	61	7
Murder 1	0	0	42	6	42	5
Murder 2	1	1	35	5	36	4
Manslaughter	3	2	32	4	35	4
Asslt Dangerous Weapon	9	6	26	3	35	4
Kidnapping	2	1	15	2	17	2
Carjacking	1	1	14	2	15	2
Other Person Offense	0	0	14	2	14	2
Unarmed Robbery, Victim 60+	5	3	7	1	12	1
A&B W/ Injury, Child Under 14	2	1	10	1	12	1
Mayhem	2	1	6	1	8	1
Vehicular Homicide	1	1	7	1	8	1
Home Invasion	0	0	8	1	8	1
Accessory After the Fact	0	0	7	1	7	1
Stalking	0	0	7	1	7	1
Armed Assault in Dwelling	0	0	6	1	6	1
Conspiracy	0	0	5	1	5	1
Violation Civil Rights	0	0	4	1	4	0
Attempted Murder	1	1	3	0	4	0
Unarmed Assault to Rob	0	0	3	0	3	0
Armed Asslt W/Intent to Rob/Murder, Victim 60+	1	1	2	0	3	0
Assault With Intent to Murder	0	0	2	0	2	0
Murder 2 - Juvenile Offender	0	0	2	0	2	0
Stealing by Confining or Putting in Fear	0	0	2	0	2	0
Accessory Before the Fact	0	0	1	0	1	0
Total	143	100	754	100	897	100

Please note: the offenses are arranged in descending order by offense total.

Table 11

Sex Offenses by Gender

	Female	(%)	Male	(%)	Total	(%)
Rape of Child <16, Statutory	2	29	80	37	82	37
Rape of Child <16, W/Force	0	0	37	17	37	17
Indecent A&B on Child <14	0	0	31	14	31	14
Rape	0	0	25	12	25	11
Aggravated Rape	0	0	19	9	19	8
Indecent A&B, Victim 14+	0	0	10	5	10	4
Assault With Intent to Rape	0	0	8	4	8	4
Unnatural Act	4	57	0	0	4	2
Assault W/Int to Rape, Child <16	0	0	3	1	3	1
Other Sex Offenses	1	14	2	1	3	1
Other Pornography	0	0	1	0	1	0
Indecent A&B, Mentally Retarded Victim	0	0	1	0	1	0
Incest	0	0	0	0	0	0
Total	7	100	217	100	224	100

Please note: the offenses are arranged in descending order by offense total.

Table 12

Property Offenses by Gender

	Female (%)		Male (%)		Total (%)	
Unarmed Burglary/Breaking and Entering	29	12	119	53	148	32
Larceny	96	39	22	10	118	25
Shoplifting	49	20	0	0	49	10
Vehicle Theft	6	2	32	14	38	8
Arson	6	2	17	8	23	5
Forgery and Uttering	15	6	6	3	21	4
Receiving Stolen Goods	15	6	5	2	20	4
Destruction of Property	7	3	8	4	15	3
Larceny From Person	11	5	2	1	13	3
Larceny From Person > 64	4	2	2	1	6	1
Fraud	4	2	1	0	5	1
Possession of Burglary Tools	1	0	4	2	5	1
Common and Notorious Thief	0	0	4	2	4	1
Armed Burglary	0	0	1	0	1	0
Common Receiver of Stolen Goods	0	0	1	0	1	0
Embezzlement	1	0	0	0	1	0
Total	244	100	224	100	468	100

Please note: the offenses are arranged in descending order by offense total.

Table 13

Drug Offenses by Gender

	Female (%)		Male (%)		Total (%)	
Possession of Hypodermic Instrument	16	7	0	0	16	2
Conspiracy to Violate Drug Law	9	4	9	1	18	2
Controlled Substance - No Class Specified	80	33	1	0	81	9
Controlled Substance - Class A	1	0	10	2	11	1
Controlled Substance - Class B	0	0	0	0	0	0
Fraudulent Prescriptions	3	1	2	0	5	1
Class A - Poss W/Int To Distribute	31	13	101	16	132	15
Class B - Poss W/Int To Distribute	48	20	106	16	154	17
Class C - Poss W/Int to Dist	2	1	1	0	3	0
*Class A Poss W/Int to Dist, Subsequent	1	0	25	4	26	3
*Class B - Poss W/Int to Dist, Subsequent	3	1	45	7	48	5
*Class C - Poss W/Int to Dist, Subsequent	0	0	1	0	1	0
*Specific CL B - Poss W/Int to Dist, Subsequent	1	0	19	3	20	2
*Specific CL B - Poss W/Int to Distribute	13	5	43	7	56	6
*Specific Class B - Trafficking 14-28 Grams	12	5	107	17	119	13
*Specific Class B - Trafficking 28-100 Grams	2	1	72	11	74	8
*Specific Class B - Trafficking 100-200 Grams	0	0	23	4	23	3
*Specific Class B - Trafficking 200+ Grams	2	1	8	1	10	1
Being Present Where Heroin is Kept	1	0	0	0	1	0
Class D - Poss W/Int to Distribute	4	2	1	0	5	1
Induce Minor in Sale and Distribution of Drugs	0	0	1	0	1	0
*Class A - Trafficking 14-28 Grams	0	0	2	0	2	0
*Class A - Trafficking 28-100 Grams	1	0	1	0	2	0
*Class A - Trafficking 100-200 Grams	0	0	3	0	3	0
Drug Violation School/Park	11	5	65	10	76	9
*Class B Poss W/Int to Dist to Minor	0	0	0	0	0	0
*Marijuana - Trafficking 50-100 Lbs	0	0	1	0	1	0
Total	241	100	647	100	888	100

* Denotes an offense which carries a mandatory sentence.

Please note the offenses are arranged in order by drug violation category.

Table 14

Other Offenses by Gender

	Female	(%)	Male	(%)	Total	(%)
OUI, Alcohol or Drugs	96	32	9	11	105	28
Other Motor Vehicle Offenses	60	20	1	1	61	16
Prostitution	56	19	0	0	56	15
Carry a Firearm W/Out License	2	1	38	47	40	11
Decency/Public Peace Crimes	31	10	0	0	31	8
Violation of Court Order	16	5	0	0	16	4
Other Weapons Offense	1	0	12	15	13	3
Attempt to Commit Crime	4	1	9	11	13	3
Leave Scene of Vehicular Accident	12	4	0	0	12	3
Escape	3	1	5	6	8	2
Operating Under the Influence W/Injury	2	1	4	5	6	2
Trespassing	5	2	0	0	5	1
Resisting Arrest	5	2	0	0	5	1
Deriving Support From Prostitute	1	0	1	1	2	1
Perjury/Contempt of Court	1	0	1	1	2	1
Delivering/Receiving Articles for Inmates	1	0	0	0	1	0
Habitual Criminal	0	0	1	1	1	0
Obstruction of Justice	1	0	0	0	1	0
Sale/Possession of Alcohol To Minor	1	0	0	0	1	0
Total	298	100	81	100	379	100

Please note: the offenses are arranged in descending order by offense total.

Sentencing

Table 15

Minimum Sentence, 1994 to 1998

	1994		1995		1996		1997		1998		% Chng 97 vs 98
	N	%	N	%	N	%	N	%	N	%	%
No Minimum	1,016	32	1,031	32	1,031	34	894	30	857	30	-4
Less Than 5 Yrs	765	24	1,209	37	1,275	42	1,318	44	1,303	46	-1
5 to Less Than 10 Yrs	991	31	705	22	507	17	497	17	467	16	-6
10 to Less Than 20Yrs	270	9	209	6	134	4	146	5	132	5	-10
20 Yrs or More	25	1	22	1	16	1	24	1	15	1	-38
Life	94	3	82	3	90	3	98	3	82	3	-16
Total	3,161	100	3,258	100	3,053	100	2,977	100	2,856	100	-4

Figure 10

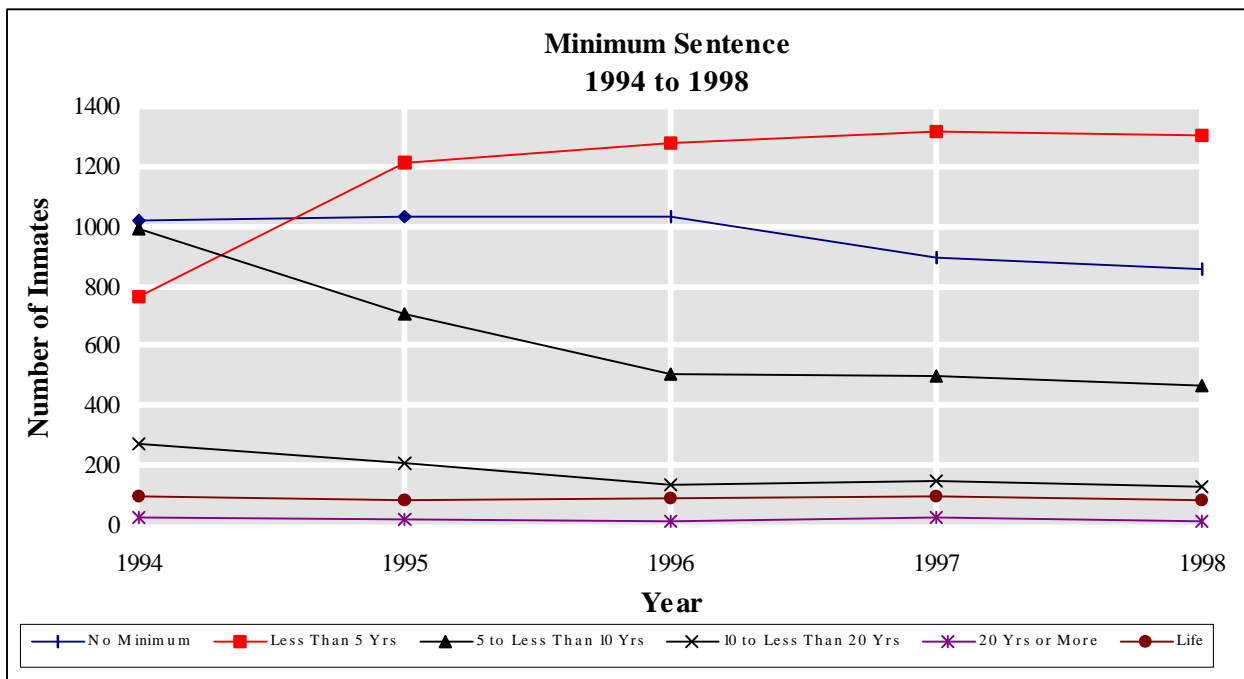


Table 16

Minimum Sentence by Gender

	Female	(%)	Male	(%)	Total	(%)
Less Than 1 Yr	0	0	3	0	3	0
1 to Less Than 2 Yrs	12	1	122	6	134	5
2 to Less Than 3 Yrs	27	3	370	19	397	14
3 to Less Than 4 Yrs	32	3	506	26	538	19
4 to Less Than 5 Yrs	4	0	227	12	231	8
5 to Less Than 6 Yrs	9	1	245	13	254	9
6 to Less Than 7 Yrs	3	0	74	4	77	3
7 to Less Than 8 Yrs	1	0	57	3	58	2
8 to Less Than 9 Yrs	1	0	37	2	38	1
9 to Less Than 10 Yrs	2	0	38	2	40	1
10 to Less Than 11 Yrs	1	0	61	3	62	2
11 to Less Than 12 Yrs	0	0	7	0	7	0
12 to Less Than 13 Yrs	1	0	16	1	17	1
13 to Less Than 14 Yrs	0	0	2	0	2	0
14 to Less Than 15 Yrs	0	0	5	0	5	0
15 to Less Than 16 Yrs	2	0	22	1	24	1
16 to Less Than 17 Yrs	0	0	3	0	3	0
17 to Less Than 18 Yrs	0	0	0	0	0	0
18 to Less Than 19 Yrs	0	0	9	0	9	0
19 to Less Than 20 Yrs	1	0	2	0	3	0
20 Yrs or More	0	0	15	1	15	1
Life	1	0	81	4	82	3
No Minimum	836	90	21	1	857	30
Total	933	100	1,923	100	2,856	100

Table 17

Maximum Sentence, 1994 to 1998

	1994		1995		1996		1997		1998		% Chng 97 vs 98	
	N	%	N	%	N	%	N	%	N	%		%
Less Than 5 Yrs	999	32	1,498	46	1,762	58	1763	59	1,757	62		0
5 to Less Than 10 Yrs	1,134	36	1,090	33	843	28	784	26	737	26		-6
10 to Less Than 20 Yrs	791	25	486	15	296	10	269	9	235	8		-13
20 Yrs or More	143	5	102	3	62	2	63	2	45	2		-29
Life	94	3	82	3	90	3	98	3	82	3		-16
Total	3,161	100	3,258	100	3,053	100	2,977	100	2,856	100		-4

Please note less than 5 years may include inmates serving a fine, which has been calculated into days.

Figure 11

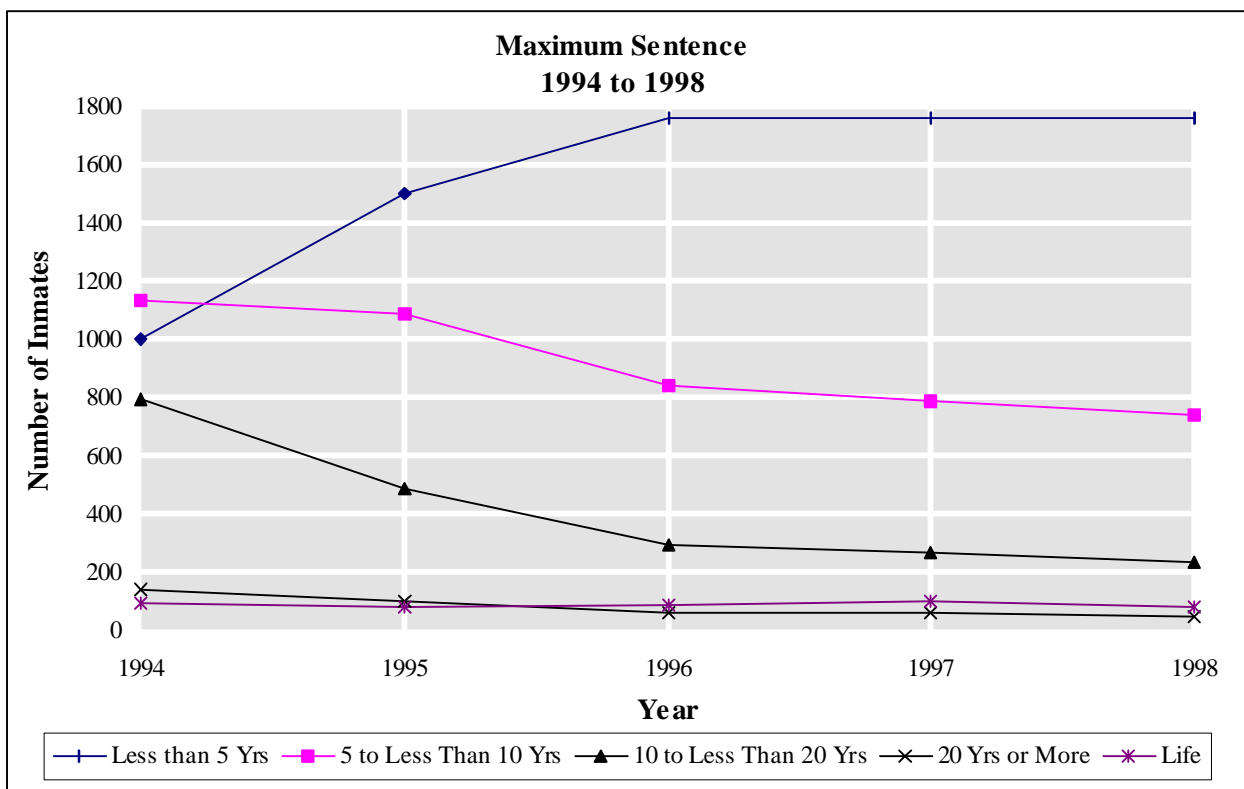


Table 18

Maximum Sentence by Gender

	Female	(%)	Male	(%)	Total	(%)
*Less Than 1 Yr	569	61	4	0	573	20
1 to Less Than 2 Yrs	181	19	55	3	236	8
2 to Less Than 3 Yrs	105	11	219	11	324	11
3 to Less Than 4 Yrs	24	3	397	21	421	15
4 to Less Than 5 Yrs	14	2	189	10	203	7
5 to Less Than 6 Yrs	23	2	419	22	442	15
6 to Less Than 7 Yrs	2	0	113	6	115	4
7 to Less Than 8 Yrs	3	0	113	6	116	4
8 to Less Than 9 Yrs	2	0	31	2	33	1
9 to Less Than 10 Yrs	2	0	29	2	31	1
10 to Less Than 11 Yrs	1	0	134	7	135	5
11 to Less Than 12 Yrs	0	0	4	0	4	0
12 to Less Than 13 Yrs	1	0	36	2	37	1
13 to Less Than 14 Yrs	0	0	3	0	3	0
14 to Less Than 15 Yrs	0	0	3	0	3	0
15 to Less Than 16 Yrs	4	0	39	2	43	2
16 to Less Than 17 Yrs	0	0	2	0	2	0
17 to Less Than 18 Yrs	0	0	3	0	3	0
18 to Less Than 19 Yrs	0	0	5	0	5	0
19 to Less Than 20 Yrs	0	0	0	0	0	0
20 Yrs or More	1	0	44	2	45	2
Life	1	0	81	4	82	3
Total	933	100	1,923	100	2,856	100

* Includes inmates serving a fines which have been calculated into days.

Table 19

Life Sentences, 1994 to 1998

	1994		1995		1996		1997		1998		% Chng 97 vs 98
	N	%	N	%	N	%	N	%	N	%	%
First Degree Life	47	50	48	59	51	57	53	54	42	51	-21
Second Degree Life	47	50	34	41	39	43	45	46	40	49	-11
Total	94	100	82	100	90	100	98	100	82	100	-16

Figure 12

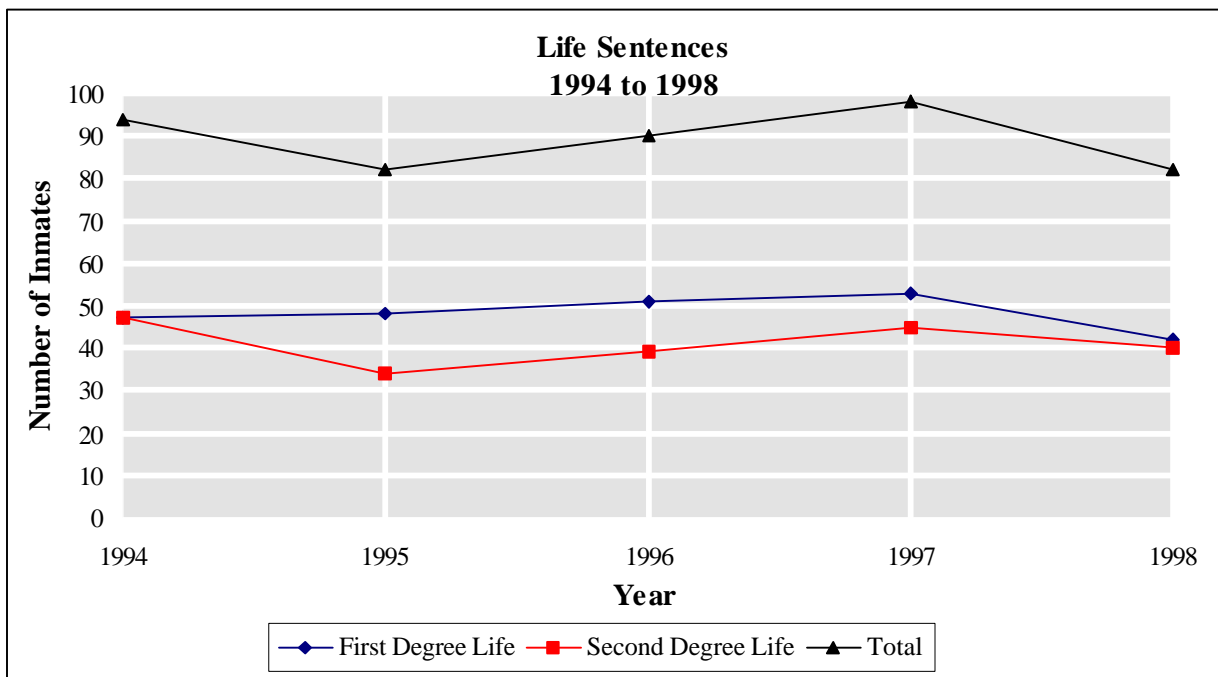


Table 20

Court From Which Committed by Gender

	Female	(%)	Male	(%)	Total	(%)
District Courts	775	83	11	1	786	28
Barnstable Superior	1	0	31	2	32	1
Berkshire Superior	4	0	55	3	59	2
Bristol Superior	7	1	167	9	174	6
Dukes Superior	0	0	0	0	0	0
Essex Superior	17	2	187	10	204	7
Franklin Superior	0	0	15	1	15	1
Hampden Superior	16	2	238	12	254	9
Hampshire Superior	1	0	18	1	19	1
Middlesex Superior	30	3	224	12	254	9
Nantucket Superior	0	0	0	0	0	0
Norfolk Superior	7	1	65	3	72	3
Plymouth Superior	11	1	114	6	125	4
Suffolk Superior	14	2	486	25	500	18
Worcester Superior	31	3	236	12	267	9
Juvenile Courts	0	0	4	0	4	0
Not Available	19	2	72	4	91	3
Total	933	100	1,923	100	2,856	100

Please note: "Not Available" denotes "From and After" Sentences where the court which imposed the sentence can not be determined from the data.

Table 21

County of Court From Which Committed by Gender

	Female	(%)	Male	(%)	Total	(%)
Barnstable County	2	0	31	2	33	1
Berkshire County	4	0	58	3	62	2
Bristol County	9	1	170	9	179	6
Dukes County	0	0	0	0	0	0
Essex County	226	24	187	10	413	14
Franklin County	1	0	15	1	16	1
Hampden County	18	2	238	12	256	9
Hampshire County	1	0	18	1	19	1
Middlesex County	182	20	229	12	411	14
Nantucket County	0	0	0	0	0	0
Norfolk County	80	9	66	3	146	5
Plymouth County	124	13	115	6	239	8
Suffolk County	16	2	488	25	504	18
Worcester County	251	27	236	12	487	17
Not Available	19	2	72	4	91	3
Total	933	100	1,923	100	2,856	100

Please note: "Not Available" denotes "From and After" Sentences where the court which imposed the sentence can not be determined from the data.

Table 22

Sentence Type by Gender

	Female	(%)	Male	(%)	Total	(%)
House of Correction	835	89	7	0	842	29
Reformatory	2	0	13	1	15	1
State Prison	96	10	1903	99	1999	70
Total	933	100	1923	100	2856	100

Table 23

Sentence Count by Gender

	Female	(%)	Male	(%)	Total	(%)
One	432	46	896	47	1328	46
Two	225	24	421	22	646	23
Three	106	11	224	12	330	12
Four	75	8	133	7	208	7
Five to Nine	82	9	192	10	274	10
Ten to Nineteen	9	1	51	3	60	2
Twenty or More	4	0	6	0	10	0
Total	933	100	1923	100	2856	100

* Number of sentences for which an inmate is serving. Please see glossary definition for more detail.

Table 24

Truth In Sentencing Indicator by Gender

	Female	(%)	Male	(%)	Total	(%)
Yes	880	94	1694	88	2574	90
No	53	6	229	12	282	10
Total	933	100	1923	100	2856	100

Figure: 13

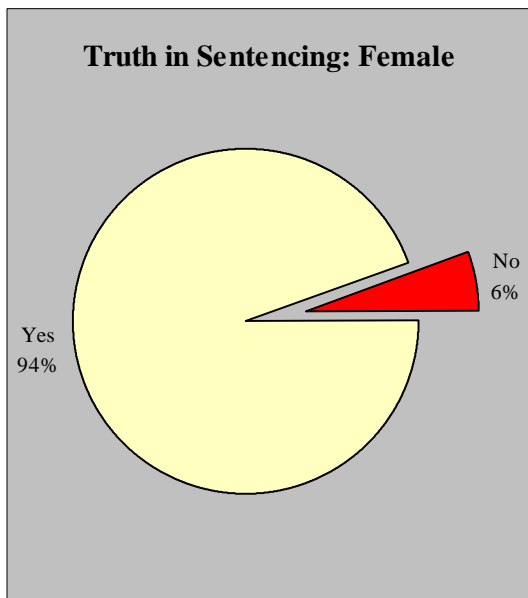
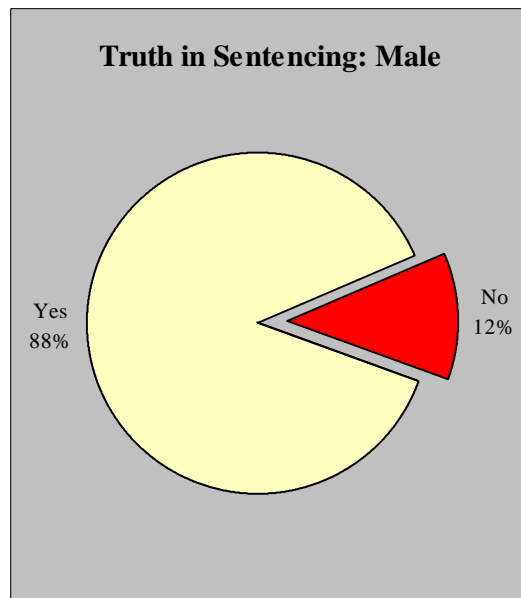


Figure: 14



Glossary

Age At Incarceration	Jail credits are not included in the calculation of age at incarceration.
Court from Which Committed	Boston Municipal Court is included with the District Court category, as well as other former Municipal courts; District courts are lower courts of all counties.
CRS	Correctional Residential Services.
Current Offense	<p>Inmates may be incarcerated for multiple offenses. The offense reported is that associated with the longest maximum discharge date.</p> <p>Offense labels can be found in the Appendix and are listed in alphabetical order by offense category.</p>
DOC	Massachusetts Department of Correction.
Expiration	Expiration of Sentence.
GCD	Good Conduct Discharge.
HOC	House of Correction - Massachusetts.
Marital Status	The categories “Common Law”, “Cohabitant”, and “Life Partner” are combined into the category labeled “Partner/Live-in” for this report.
Mean	The sum of the values of all the observations in a data set divided by the number of observations.
Median	The point in an array of data which has an equal number of observations above and below it.
Minimum Sentence	Some inmates do not have a minimum sentence, only a maximum sentence. Cases with “No Minimum” term are inmates serving House of Correction (County) or Reformatory sentences and can also be those serving out of state or federal sentences.
MSA	Metropolitan Statistical Area as defined by the Federal Bureau of Census.
Not Available/NA	Information that is unavailable for previous years due to changes to definitions/reporting are noted as “Not Available”. Also, missing information is considered “Not Available”.

Not Reported	For self-reported variables such as marital status, education, race, place of birth, and address missing information is noted as “Not Reported”.
PPREP	Pre-Parole Residential Environment Program.
PV	Parole Violation.
Race/Ethnicity	Inmates who self-report their race as “White Hispanic” or “Black Hispanic” are combined into the “Hispanic” category for this report.
Religion	Inmates who self-report their religion as “Baptist” or “Catholic” or “Lutheran” or “Mormon” or “Pentecostal” or “Protestant” are combined into Christian category for this report.
Sentence Count	An inmate is often serving more than one sentence at the same time. This variable is a count of the number of sentences <u>imposed</u> that are entered into the database per inmate. Consecutive sentences that can be identified in the data are subtracted from the count.
Sentence/Sentence Type	
House of Correction Sentences	Also known as “County Sentences”. Prior to the “Truth in Sentencing” law, if an offender is sentenced to the House of Correction, the term shall be two and a half years or less. Parole eligibility and discharge are based on the maximum term of a sentence. Under the “new” law, discharge on this sentence will change because of the elimination of statutory good time. There is no change in the parole eligibility date.
Other State, Federal	This category is used for inmates who were received by the DOC from another state correctional agency or the Federal Bureau of Prisons and are not sentenced under Massachusetts General Law.
Reformatory Sentence	Prior to the “Truth in Sentencing” law, males and females can be sentenced to a Reformatory sentence, an indefinite term, indicated by a maximum term. For MCI- Concord, a male not previously sentenced for felony more than three times,

convicted of a crime punishable by imprisonment in any correctional institution of the Commonwealth or by imprisonment in a jail or House of Correction may be sentenced for an indefinite term. Concord may confine misdemeanor offenders as well as those who commit felonies.

A female convicted of a crime punishable by imprisonment in a House of Correction, may be sentenced to the Massachusetts Correctional Institution-Framingham. In addition to those women who commit felonies, MCI-Framingham may confine female misdemeanor offenders.

The “new” law eliminates “Concord” (or Framingham) sentences to the state reformatory.

State Prison Sentence

Prior to the “Truth in Sentencing” law, if an offender is sentenced to the State Prison, except for life or as an habitual criminal, the court shall not fix the term of imprisonment, but shall fix a maximum and minimum term for which he/she may be imprisoned. The minimum term shall not be less than two and a half years. All sentences which have a finite maximum term are eligible to have the term reduced by statutory good time, except for most sex offenses, crimes committed while confined and certain “mandatory” sentences.

In the “new law”, all state sentences have a minimum and a maximum term, unless an inmate is sentenced for life or as a habitual criminal. The minimum term is used to determine parole eligibility, and the maximum term is used to determine discharge.

Under both the “old” and “new” sentencing systems, an inmate is discharged from his/her sentence at the expiration of his term, less any statutory or earned good time. Under the “new” system none of the reduction will be attributable to statutory good time.

Truth in Sentencing

On January 12, 1994, the Governor signed into law an Act to Promote the Effective Management of the Criminal Justice System. St. 1993, c. 432, generally known as the “Truth In Sentencing” Law. Sentencing for offenses committed after June 30, 1994 are significantly affected by this law. This field indicates whether the “Current Offense” was committed prior to or after June 30, 1994.

Type of Sentence

In past reports, this variable has represented the type of sentence received by the court such as Aggregate, Concurrent, Fine, Forthwith, From and After, Simple, or Split. Due to a changes in the database, the Type of Sentence is no longer available in such detail, consequently it is no longer reported. This variable is different from "Sentence Type" which is presented in this report and defined earlier in the Glossary.

Violent Offense

Any offense that falls under the Person or Sex Offense categories.

Appendix

Offenses are listed if they combine more than one offense into the same label or if the label is abbreviated in the offense tables. Bolded labels represent an offense name, which has been shortened to fit in the report table. Arithmetic signs have been used to abbreviate where relevant and represent the following: > (greater than), < (less than), + (and over).

Drug Offense

Massachusetts General Law Chapter 94C
Offenses.

Class A - Poss W/Int to Distribute	Class A: Distribution or Possession with Intent to Distribute (no mandatory minimum term).
Class A - Poss W/Int to Distribute, Subsequent	Class A: Subsequent Offense, Distribution or Possession with Intent to Distribute (mandatory minimum term specified).
Class B - Poss W/Int to Distribute	Class B: Distribution or Possession with Intent to Distribute (no mandatory minimum term).
Class B - Poss W/Int to Distribute, Subsequent	Class B: Subsequent Offense, Distribution or Possession with Intent to Distribute (mandatory minimum term specified).
Class B - Poss W/Int to Distribute to Minor	Class B: Distribution or Possession with Intent to Distribute to a Minor (mandatory minimum term specified).
Class C - Poss W/Int to Distribute	Class C: Distribution or Possession with Intent to Distribute (no mandatory minimum term).
Class C- Poss W/Int to Distribute, Subsequent	Class D: Subsequent Offense, Distribution or Possession with Intent to Distribute (mandatory minimum term specified).
Class D - Poss W/Int to Distribute	Class D: Distribution or Possession with Intent to Distribute (no mandatory minimum term).
Specific Class B - Poss W/Int to Distribute	Specific Class B: Distribution or Possession with Intent to Distribute (mandatory minimum term specified). Specific Class B drugs are PCP, Cocaine, Methamphetamine.
Specific Class B - Poss W/Int to Distribute, Subsequent	Specific Class B: Subsequent Offense, Distribution or Possession with Intent to Distribute (mandatory minimum term specified). Specific Class B drugs are PCP, Cocaine, Methamphetamine.
Specific Class B - Trafficking	Trafficking categories are broken out by amount. Specific Class B drugs are PCP, Cocaine, Methamphetamine.

Conspiracy to Violate Drug Law	Conspiracy to Violate Controlled Substance Act.
Controlled Substance	Includes the manufacturing, distribution, dispensing or possession with intent to manufacture, distribute or dispense a controlled substance. The following are the controlled substance categories:
Class A	Heroin and morphine;
Class B	Cocaine; opium, amphetamines, barbiturates, and PCP;
Class C	Hallucinogens (LSD, hashish);
Class D	Marijuana;
Class E	Prescription drugs;
No Class Specified	Type of drug is not indicated by the sentence.
Drug Violation, School/Park	Drug violation near a school or park.
Fraudulent Prescriptions	Includes uttering false prescriptions and subsequent offense; drugs obtained by fraud.
Induce Minor in Sale and Distribution of Drugs	Includes drug funds, induce minors to possess, and induce minors to distribute.
Possession of Hypodermic Instrument	Includes possession of hypodermic needle, or any instrument adapted for the administration of narcotic drugs, hypodermic violation.
Theft of Drugs	Includes larceny of drugs.
<u>Person Offense</u>	Crimes Against the Person (primarily Massachusetts General Law Chapter 265 offenses).
Armed Assault W/Intent to Rob/Murder	Includes assault with intent to rob, murder being armed; assault with a deadly weapon with intent to rob.
Armed Assault in Dwelling	Includes armed assault in dwelling houses; act may be an actual assault or an attempt.
Assault With Intent to Murder	Includes assault with intent to murder, maim, etc.; assault to commit murder; assault with intent to kill.
A&B W/Injury, Child Under 14	Assault and Battery Upon a Child.
Assault/A&B	Assault and Assault and Battery. Includes assault, assault and battery, assault on an officer or a public employee.

Attempted Murder	Includes all attempts to commit murder, other than assaults: attempted murder, attempts to commit murder by poisoning, drowning, or strangling.
Conspiracy	If crime is specified, (i.e., conspiracy to commit larceny), the offense is listed under the specified crime. If crime is not specified, the offense is listed under this category.
Extortion	Includes attempts to extort money, threats, threat to commit crime.
Stealing by Confining or Putting in Fear	Confining or Putting in Fear a Person for the Purpose of Stealing. Includes breaking, burning or blowing up a safe; intimidate to steal from a depository.
Kidnapping	Includes abduction, holding hostage, for extortion, minor by relative, person in custody.
Manslaughter	Includes negligent homicide, voluntary/involuntary manslaughter.
Other Person Offense	Includes assault to intimidate, injury to a firefighter as a result of a criminal offense, assault with intent to commit manslaughter- felony.
Stalking	Includes stalking in violation of a restraining order; stalking as a subsequent offense.
Unarmed Assault to Rob	Includes assault to rob, not being armed, assault to rob, assault with intent to rob, assault with intent to rob by force and violence.
Unarmed Robbery	Includes robbery, robbery not being armed, robbery by force and violence.
<u>Property Offense</u>	Crimes Against Property (primarily Massachusetts General Law Chapter 266 offenses).
Armed Burglary	Burglary, Armed or an Assault. Includes armed burglary, breaking and entering with intent to assault with or without dangerous weapon.
Arson	Arson and Attempted Arson. Includes using and or possession of explosives, obstruction of fire fighting.
Larceny	Includes stealing in a building, ship, or at a fire.
Receiving Stolen Goods	Includes the receiving and buying of stolen goods.
Shoplifting	Includes shoplifting as a third offense.

Unarmed Burglary/Breaking and Entering	Includes breaking and entering (both night and day), attempt to break and enter, breaking and entering and larceny, burglary, breaking and entering with intent to commit larceny.
Vehicle Theft	Theft of a Motor Vehicle. Includes larceny of a motor vehicle, boat.
<u>Other Offense</u>	Miscellaneous offenses that are not clearly categorized into one of the other offense categories of Person, Property, Sex or Drug.
Bribery/Corruption	Includes conflict of interest, corruption of public employee.
Carry a Firearm W/Out License	Weapons Violation of Bartley-Fox Gun Law (mandatory 1 year sentence for carrying a firearm without a license.
Decency/Public Peace Crimes	Other Decency/Public Peace Crimes. Includes idle and disorderly, affray, annoying phone calls, disturbing the peace, accosting and annoying persons of the opposite sex, lewd and lascivious, indecent exposure, threat to commit crime, common night walker.
Delivering/Receiving Articles for Inmates	Includes drugs or weapons.
Deriving Support from Prostitute	Deriving Support from Prostitution (pimping). Includes keeping and maintaining house of ill fame, inducing minor to prostitution, prostitutes deriving support from a child.
Escape	Includes attempts, assisting in, accessory to escape.
Leave Scene of Vehicular Accident	Leaving the Scene; motor vehicle accident, personal injury, damage.
Miscellaneous Other Offense	Includes jumping bail, contributing to the delinquency of a minor, threatening tax collector, tax evasion, violation of a civil ordinance, inhaling toxic vapors, home improvement contractor violation/unlicensed, promoting of anarchy, inciting a riot.
Operating Under the Influence W/Injury	Operating Under the Influence with Injury Resulting; liquor, drugs, negligent or recklessness all with serious injury.
Other Motor Vehicle Offenses	Includes violation of automobile law, violation of motor vehicle law, operation without authority of

	owner after suspension, operation without authority of owner, use without authority, failure to yield right of way to emergency vehicles.
Other Weapons Offense	Includes selling a firearm without a serial number.
OUI, Alcohol or Drugs	Operating a Motor Vehicle Under the Influence of Alcohol or Drugs.
Prostitution	Includes sexual conduct for fee, solicit for prostitution.
Use of a Firearm for Felony	Use of a Firearm to Commit a Felony. Includes possession of a defaced firearm in a felony.
Violation of Restraining Order	Violation of Massachusetts General Law Chapter 209A
<u>Sex Offense</u>	Sex Offenses Against the Person. Consist of Massachusetts General Law Chapter 265 (crimes against the person) and Chapter 272 offenses (crimes against chastity, morality, decency and good order).
Assault With Intent to Rape	Includes attempts to rape.
Indecent A&B on Child < 14	Indecent Assault and Battery on Child under 14. Includes indecent assault and battery on a minor.
Indecent A&B, Victim 14+	Indecent Assault and Battery on Victim, 14 or Older.
Other Sex Offenses	Includes adultery, fornication, open and gross lewdness, drugging for sex.
Rape	Age of victim not specified, or does not fall under a rape of child category.
Unnatural Act	Includes unnatural acts, lascivious acts, assault to commit unnatural sex acts.
Unnatural Act, Child < 16	Unnatural Acts with Child Under 16.