

Demographic & Attrition Trends in Massachusetts Charter Schools

**Preliminary Analysis
December 2015**

**MASSACHUSETTS DEPARTMENT OF
ELEMENTARY AND SECONDARY
EDUCATION**



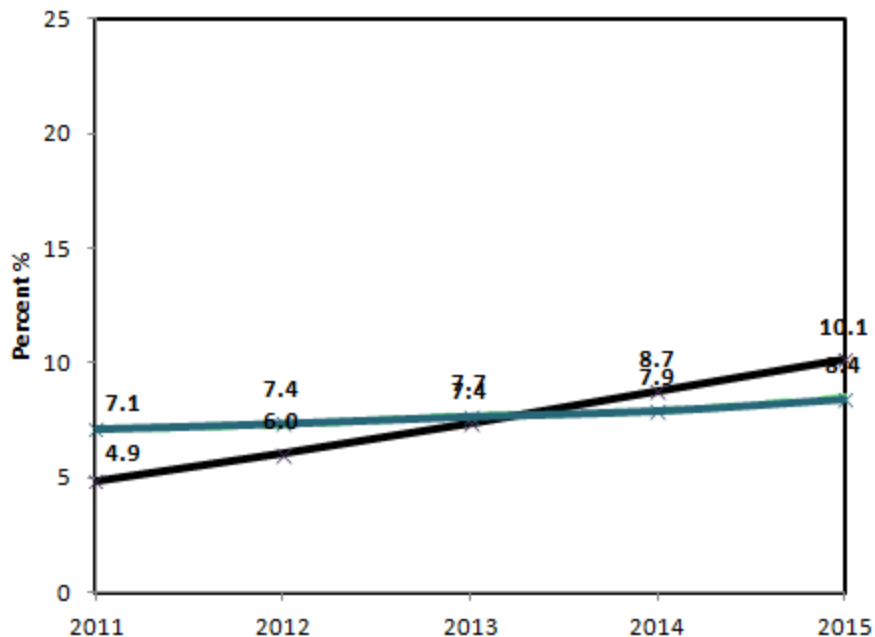
Overview - Demographics

- ★ The Department performed a review of student subgroup enrollment from 2010-2011 to 2014-2015 to identify enrollment trends of charter schools in **Boston**, in **Gateway Cities**, and in **Massachusetts overall** for the following comparison groupings:
 - ★ Aggregate of *Total Student* enrollment for charter schools compared to the aggregate of total student enrollment for District(s)
 - ★ Aggregate of *New Student* enrollment for charter schools compared to the aggregate of total student enrollment for District(s)
 - ★ Charter schools implemented Recruitment and Retention plans beginning in the 2011-2012 school year.
 - ★ *New Students* are defined as students who were not enrolled at the same school the previous school year.



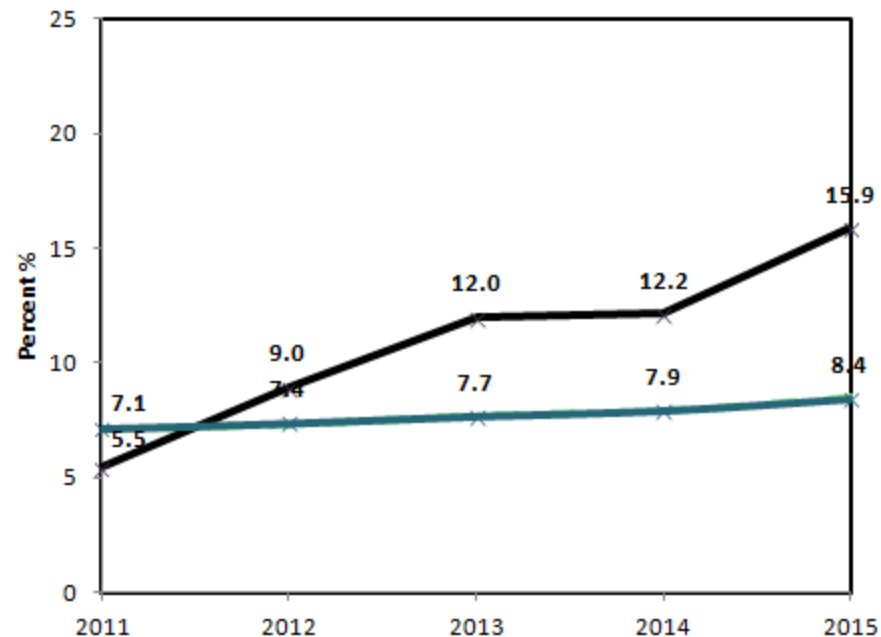
Massachusetts Charter Schools: English Language Learners (ELLs)

Total Student Enrollment



Charter Schools

New Charter Student Enrollment



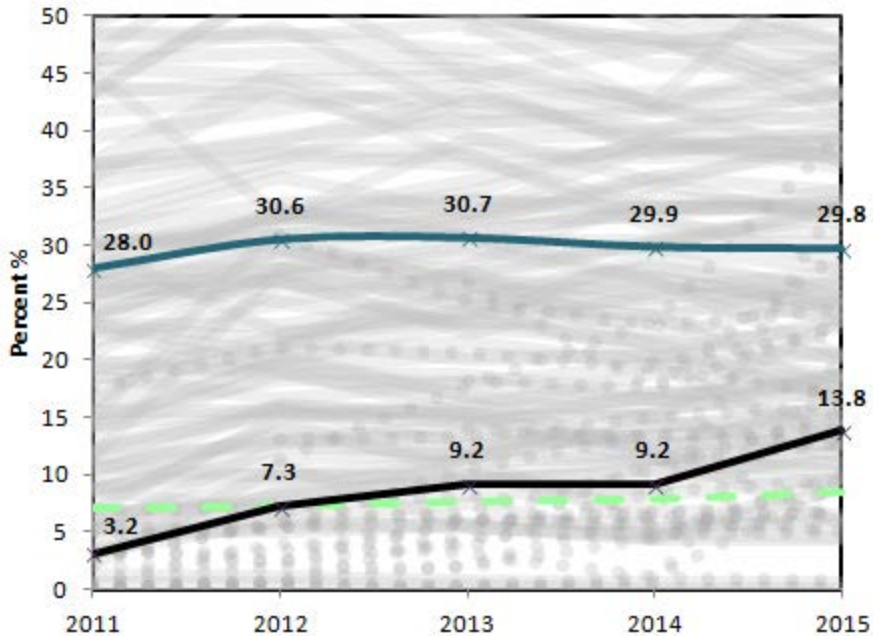
Statewide Average/Non-Charter Public Schools

- ★ The percent of ELLs enrolled in Massachusetts charter schools **has steadily increased** and now **surpasses** statewide average enrollment. The enrollment of new students who are ELLs has **increased at a greater rate over time** when compared to the total enrollment of ELLs at charter schools.

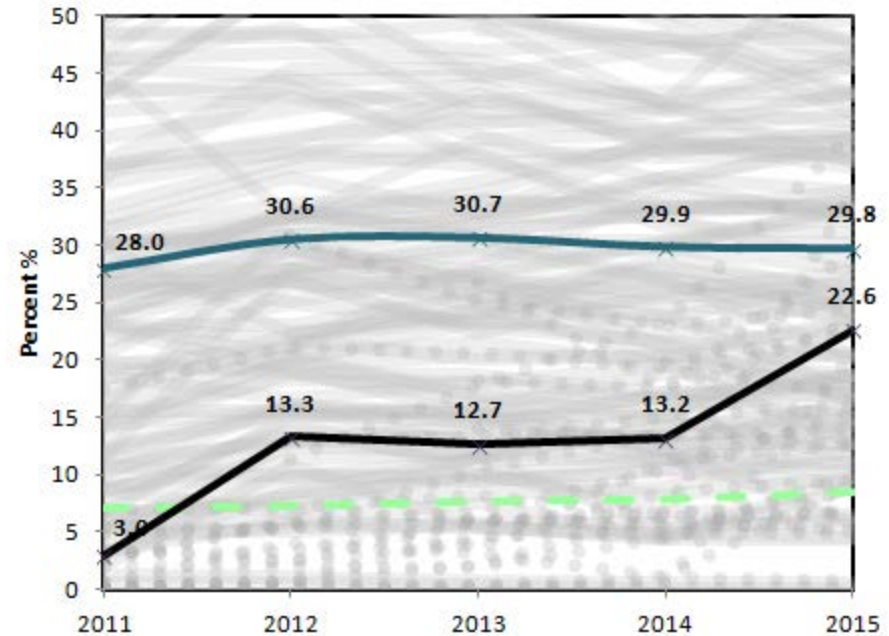


Boston Charter Schools: English Language Learners (ELLs)

Total Student Enrollment



New Charter Student Enrollment



Charter Schools ●●●

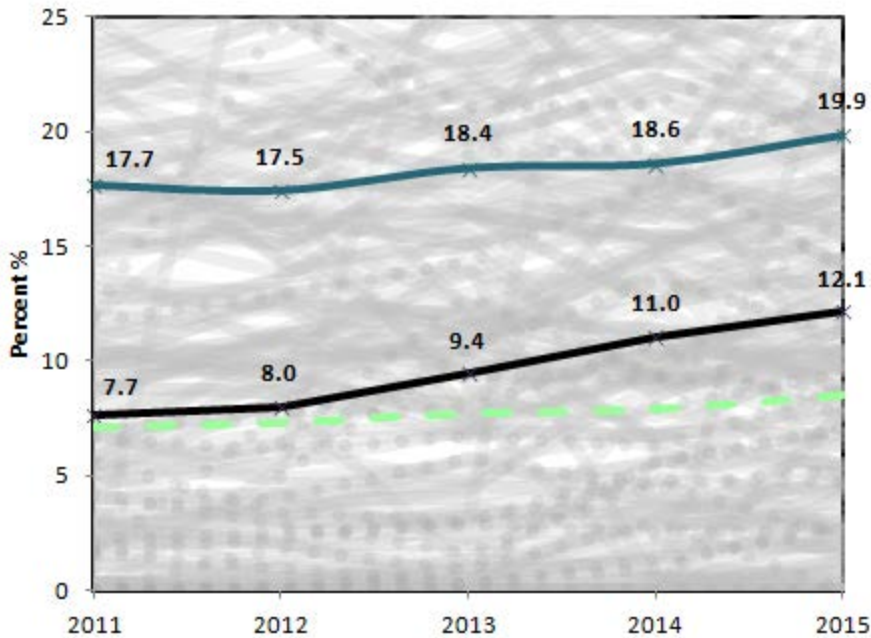
District Schools —

Statewide Average - - -

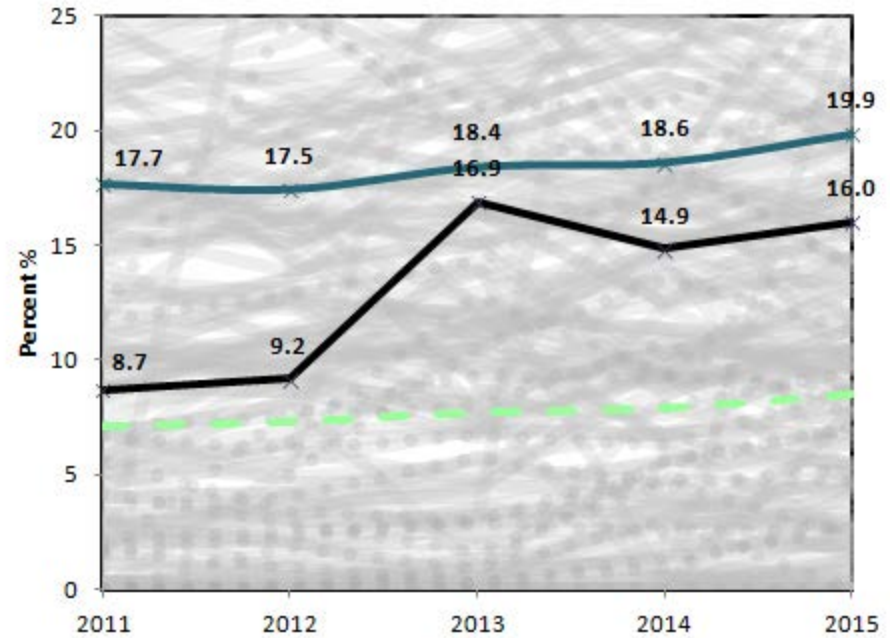
- ★ The percent of ELLs enrolled at Boston charter schools has **steadily increased** and is **approaching** the enrollment found at Boston district schools. Again, the enrollment of new students who are ELLs at Boston charter schools has **increased at a greater rate over time** when compared to the total enrollment of ELLs at charter schools.

Gateway City Charter Schools: English Language Learners (ELLs)

Total Student Enrollment



New Charter Student Enrollment

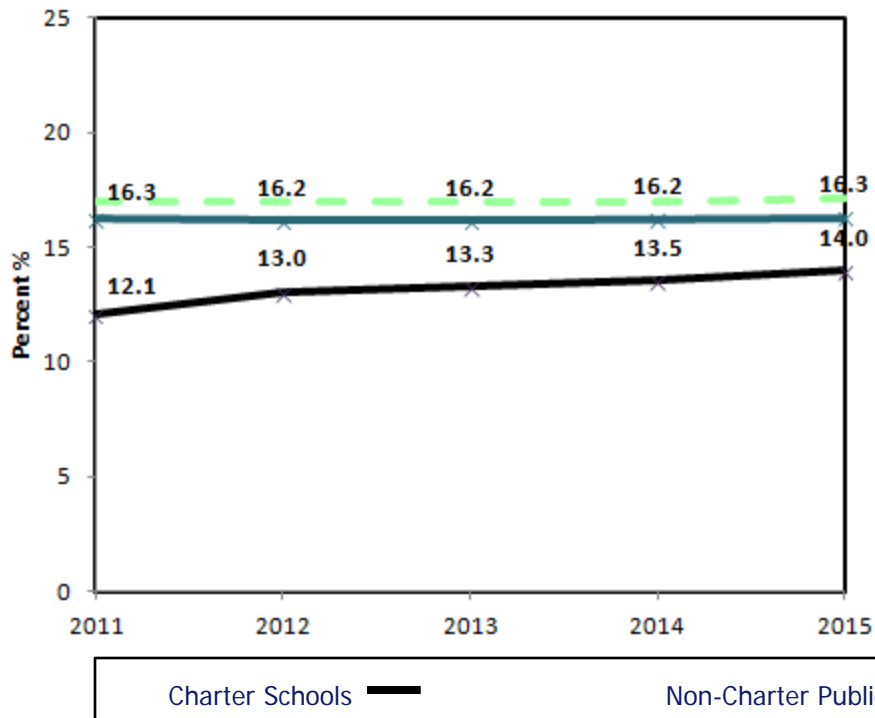


- ★ The percent of ELLs enrolled at charter schools located in Gateway Cities has **steadily increased** and is **approaching** the enrollment found at the district schools located in Gateway Cities. Again, the enrollment of new students who are ELLs has **increased at a greater rate over time** when compared to the total enrollment of ELLs at charter schools.

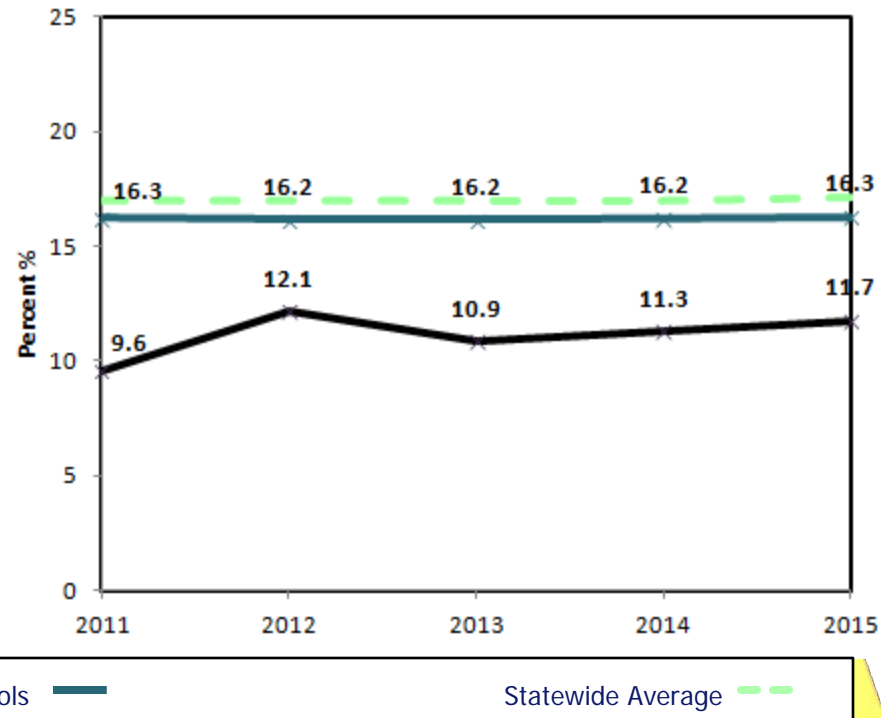


Massachusetts Charter Schools: Students with Disabilities (SWDs)

Total Student Enrollment



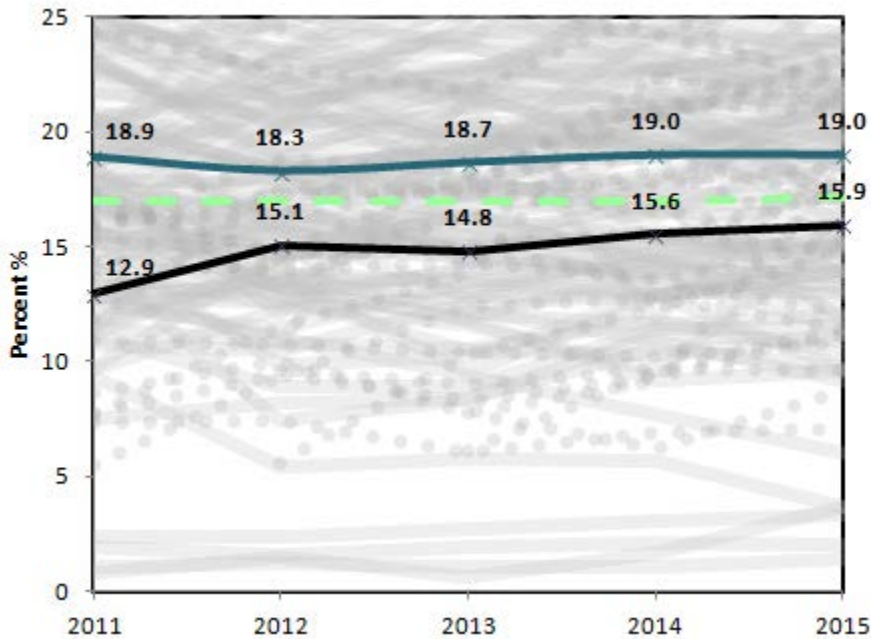
New Charter Student Enrollment



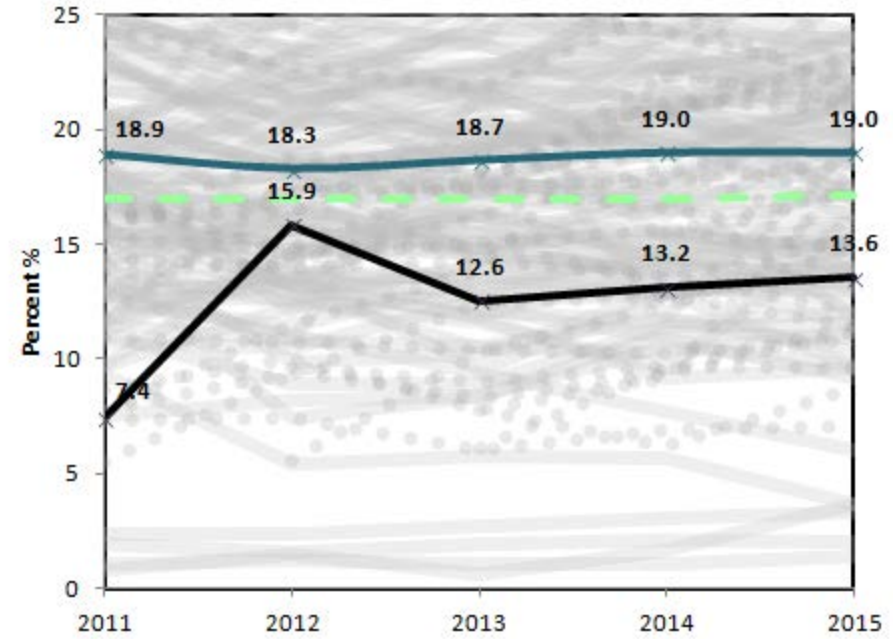
- ★ The percent of SWDs enrolled at Massachusetts charter schools has **steadily increased** and is **approaching** the statewide average enrollment. Fewer new students are identified as SWDs when compared to the total enrollment of SWDs.

Boston Charter Schools: Students with Disabilities (SWDs)

Total Student Enrollment



New Charter Student Enrollment

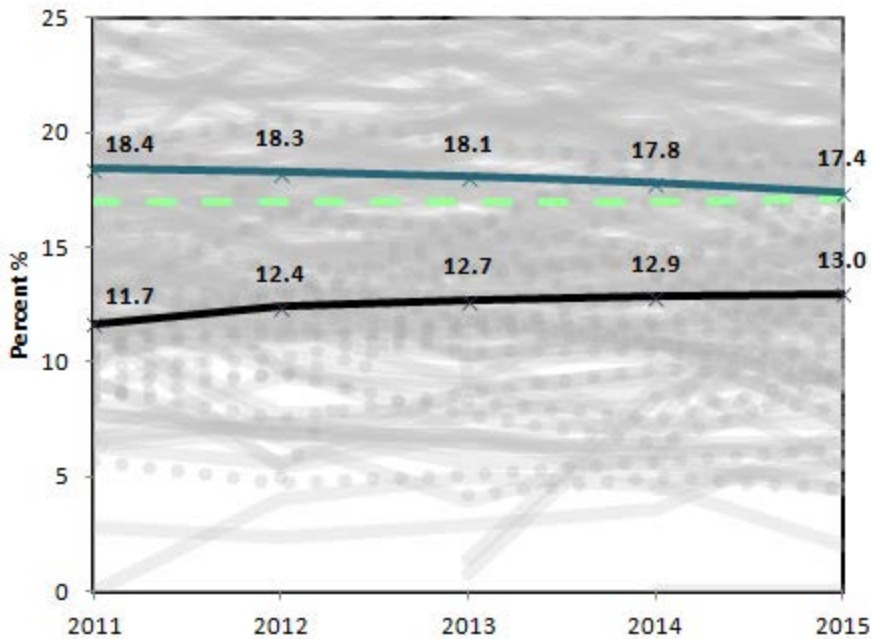


- ★ The percent of SWDs enrolled at Boston charter schools has **steadily increased** and is **approaching** the enrollment found at Boston district schools. Generally fewer new students are identified as SWDs when compared to the total enrollment of SWDs.

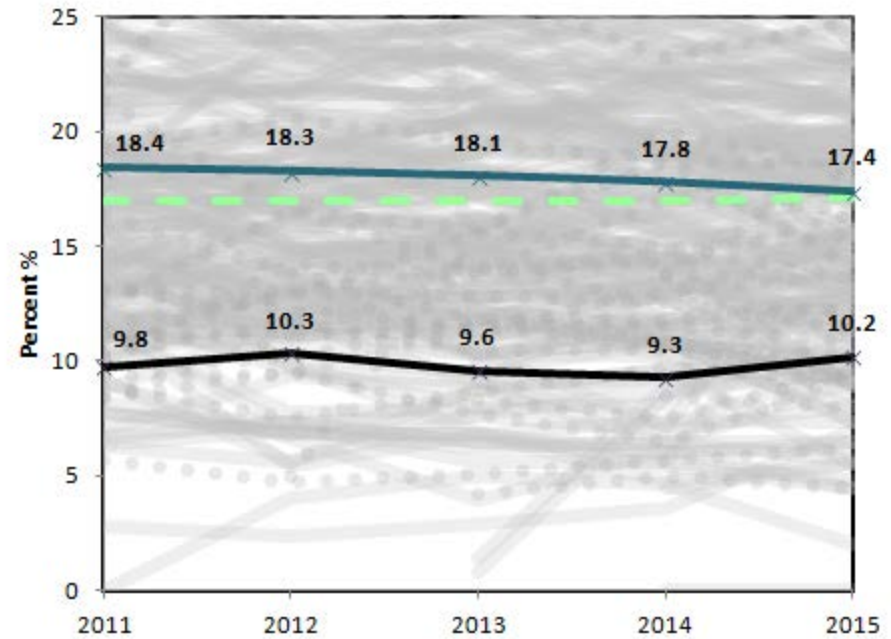


Gateway City Charter Schools: Students with Disabilities (SWDs)

Total Student Enrollment



New Charter Student Enrollment



- ★ The percent of SWDs enrolled at charter schools located in Gateway Cities is **approaching** the enrollment found at district schools located in the Gateway Cities. Fewer new students are identified as SWDs when compared to the total enrollment of SWDs.



Charter Schools: Total Enrollment vs. New Students

Students with Disabilities – Additional Context

- ★ The percentage of students with disabilities who are enrolled in charter schools has increased over time when aggregated statewide, in Boston, and in the Gateway Cities.
- ★ The Department will continue to explore why the percentage of new students with disabilities identified in October SIMS is generally lower than the total number of students with disabilities enrolled in charter schools. The Department has found the opposite to be true for the identification of ELLs.
 - ★ *Currently Under Review.* A preliminary analysis of October vs. June enrollment rates indicates that aggregated charter schools (for both all students and new students) have higher percentages of SWDs identified in June who were not initially identified in October if compared to the same analysis of aggregated districts, particularly in younger entry grades.
 - ★ This may be due to a number of time-sensitive factors, including access to records from the child's former school, and the processes used to identify students for special education services, particularly for PK and K entry grades.

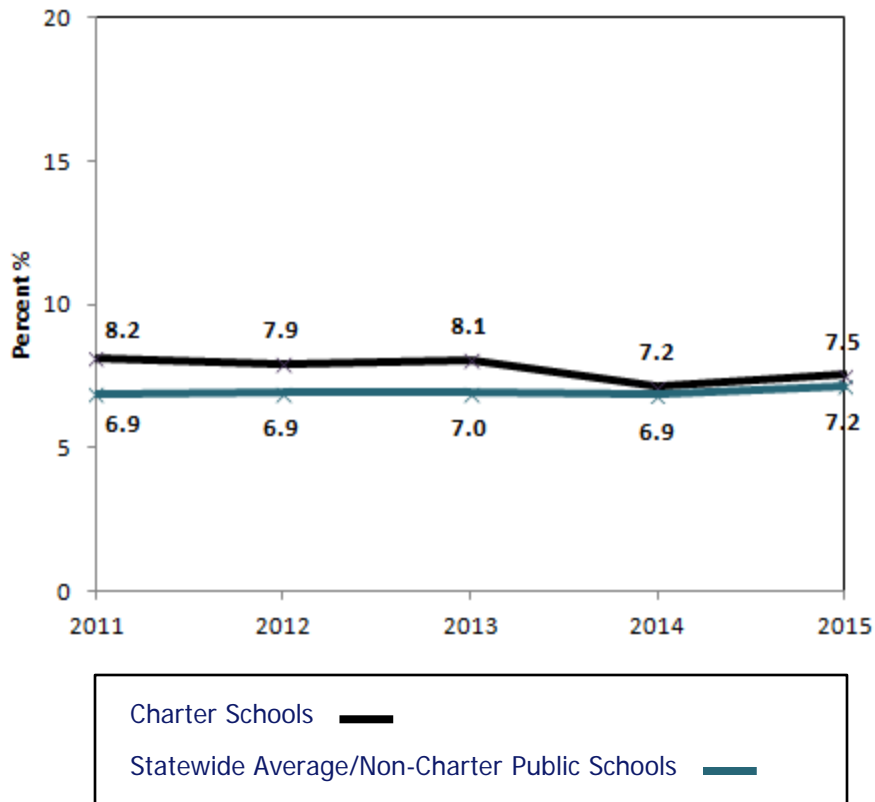


Overview - Attrition

- ★ The Department performed a review of weighted student attrition rates from 2010-2011 to 2014-2015 to identify attrition trends of charter schools in **Boston**, in **Gateway Cities**, and in **Massachusetts overall** for all students.
- ★ Weights were determined by student enrollment at each school.



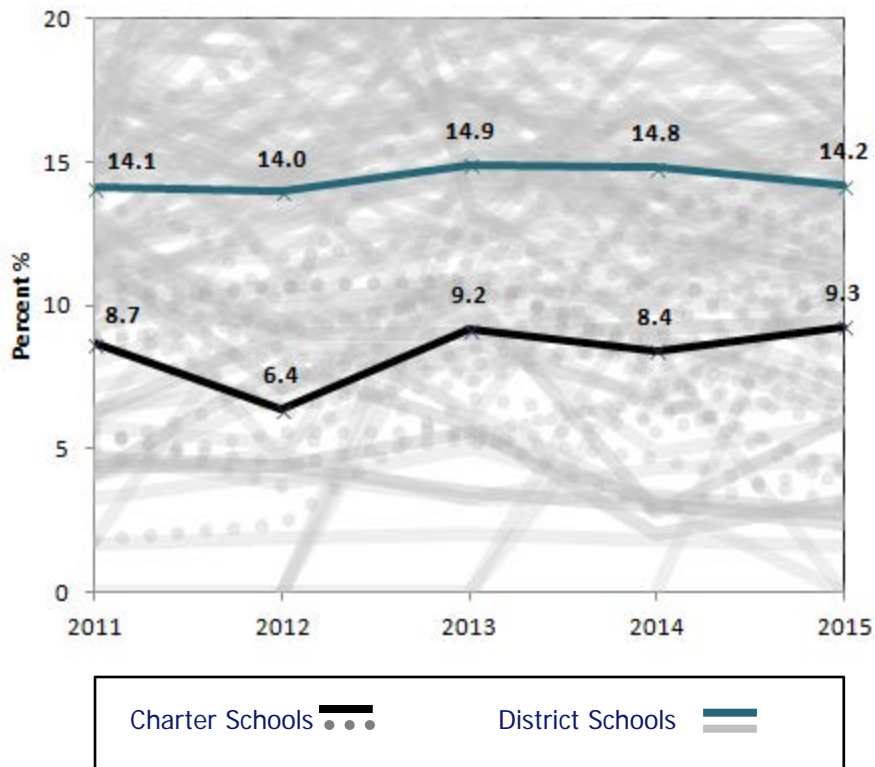
Massachusetts Charter Schools: Weighted Attrition Rates for All Students



- ★ The weighted attrition rate for Massachusetts charter schools has **declined** and has **approached** the statewide weighted attrition rate.



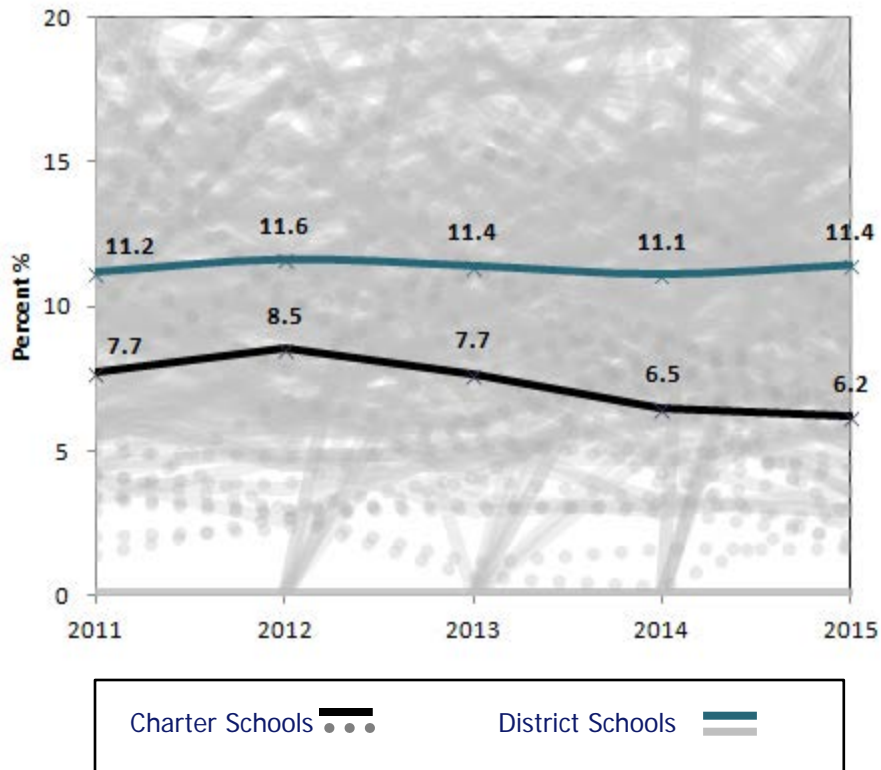
Boston Charter Schools: Weighted Attrition Rates for All Students



★ The weighted attrition rate of Boston charter schools has **remained lower** than the weighted attrition rate of Boston district schools.



Gateway City Charter Schools: Weighted Attrition Rates for All Students



- ★ The weighted attrition rate of charter schools located in Gateway cities has **remained lower** than the weighted attrition rate of Boston district schools and has **declined** over time.

