

MARCH 2000
MASSACHUSETTS DEPARTMENT OF REVENUE
PRELIMINARY MONTHLY REVENUES
(\$000)

MARCH	FY99	FY00	Change FY99 - FY00 AMOUNT	PERCENT
Total for Budget *	\$1,223,714	\$1,396,446	\$172,733	14.1 %
Net Income	336,530	469,228	132,699	39.4
Withholding	577,132	669,220	92,088	16.0
Total Sales & Use	265,492	268,762	3,271	1.2
Regular Sales	186,925	183,817	(3,108)	(1.7)
Net Corporate	333,057	374,778	41,722	12.5
Business Excise				
Banks, Insurance, Public Utilities	180,912	170,966	(9,946)	(5.5)
Other Excises**	107,724	112,711	4,987	4.6

YEAR-TO-DATE (JULY - MARCH)	FY99	FY00	Change FY99 - FY00 AMOUNT	PERCENT	BENCHMARK YEAR-TO-DATE RANGE (In Millions)
Total for Budget *	\$10,249,966	\$10,999,350	\$749,383	7.3 %	10,762 - 10,917
Net Income	5,610,975	6,119,930	508,955	9.1	
Withholding	5,121,186	5,613,567	492,381	9.6	
Total Sales & Use	2,421,081	2,621,067	199,987	8.3	
Regular Sales	1,753,211	1,884,291	131,080	7.5	
Net Corporate	750,203	805,961	55,759	7.4	
Business Excise					
Banks, Insurance, Public Utilities	415,704	357,166	(58,538)	(14.1)	
Other Excises**	1,052,004	1,095,225	43,221	4.1	

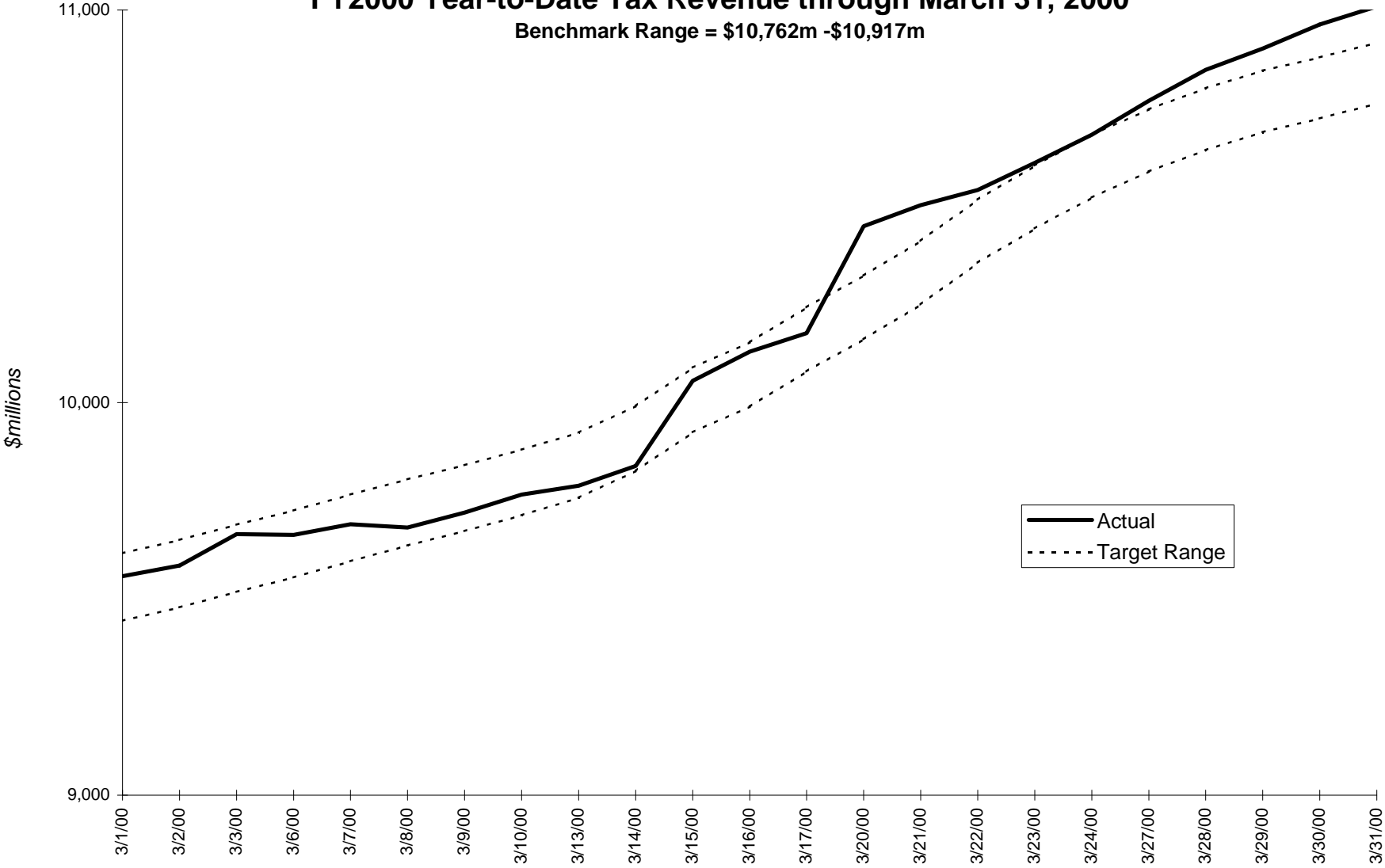
* Detail may not add to Total for Budget due to rounding.

** Other Excises includes tax revenue collected by other agencies.

Note: The 'White Sheet' for March, containing DOR's final revenue figures, is published after the eighth working day of April.

FY2000 Year-to-Date Tax Revenue through March 31, 2000

Benchmark Range = \$10,762m - \$10,917m



Target range is based on Administration and Finance FY2000 annual estimate of \$15.288 billion.

APRIL 2000
MASSACHUSETTS DEPARTMENT OF REVENUE
PRELIMINARY MONTHLY REVENUES
(\$000)

APRIL	FY99	FY00	Change FY99 - FY00 AMOUNT	PERCENT
Total for Budget *	\$1,314,588	\$1,274,953	(\$39,636)	(3.0) %
Net Income	886,541	879,360	(7,181)	(0.8)
Withholding	515,126	566,160	51,033	9.9
Total Sales & Use	269,647	268,784	(864)	(0.3)
Regular Sales	191,294	193,337	2,043	1.1
Net Corporate	47,935	58,062	10,127	21.1
Business Excise				
Banks, Insurance, Public Utilities	13,806	(29,578)	(43,384)	(314.2)
Other Excises**	96,660	98,326	1,666	1.7

YEAR-TO-DATE (JULY - APRIL)	FY99	FY00	Change FY99 - FY00 AMOUNT	PERCENT	BENCHMARK YEAR-TO-DATE RANGE (In Millions)
Total for Budget *	\$11,564,554	\$12,278,031	\$713,477	6.2 %	12,228 - 12,428
Net Income	6,497,515	7,000,610	503,095	7.7	
Withholding	5,636,313	6,180,416	544,103	9.7	
Total Sales & Use	2,690,728	2,891,485	200,757	7.5	
Regular Sales	1,944,505	2,078,205	133,700	6.9	
Net Corporate	798,138	866,245	68,107	8.5	
Business Excise					
Banks, Insurance, Public Utilities	429,511	327,612	(101,898)	(23.7)	
Other Excises**	1,148,663	1,192,079	43,416	3.8	

* Detail may not add to Total for Budget due to rounding.

** Other Excises includes tax revenue collected by other agencies.

Note: The 'White Sheet' for April, containing DOR's final revenue figures, is published after the eighth working day of May.