

**DECEMBER 2000**  
**MASSACHUSETTS DEPARTMENT OF REVENUE**  
**PRELIMINARY MONTHLY REVENUES**  
(dollar amount in thousands)

DECEMBER	FY2000	FY2001	Change FY00 - FY01 AMOUNT	PERCENT
<b>Total Taxes *</b>	\$1,445,144	\$1,421,929	(\$23,215)	(1.6) %
<b>Net Income</b>	780,610	748,289	(32,321)	(4.1)
<b>Withholding</b>	719,044	697,471	(21,573)	(3.0)
<b>Total Sales &amp; Use</b>	290,635	286,465	(4,169)	(1.4)
<b>Regular Sales</b>	215,690	218,357	2,667	1.2
<b>Net Corporate</b>	182,100	173,563	(8,537)	(4.7)
<b>Business Excise</b>				
<b>Banks, Insurance, Public Utilities</b>	71,685	91,688	20,003	27.9
<b>Other Excises**</b>	120,115	121,924	1,809	1.5

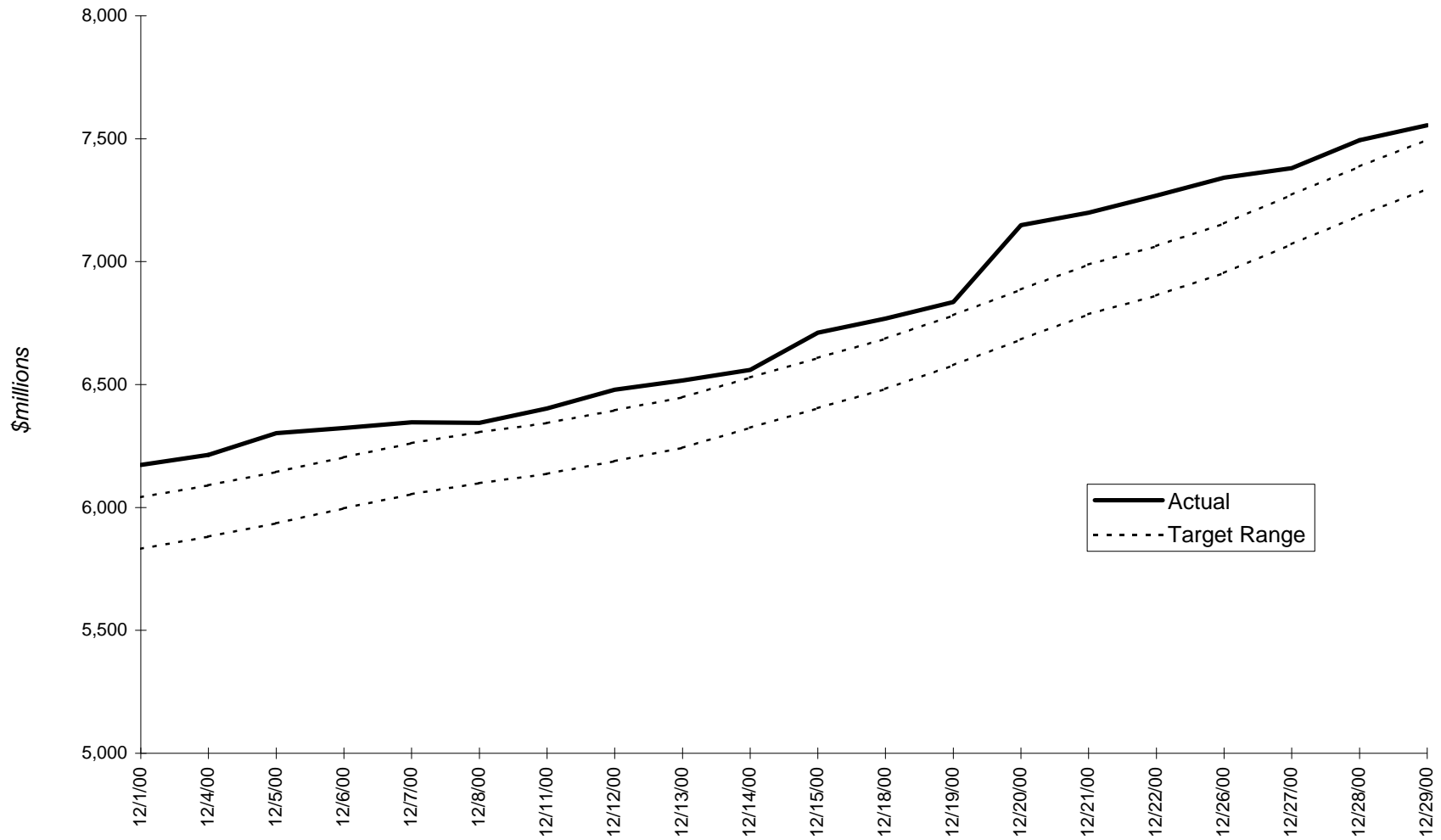
YEAR-TO-DATE (JULY - DECEMBER)	FY2000	FY2001	Change FY00 - FY01 AMOUNT	PERCENT	BENCHMARK YEAR-TO-DATE RANGE (In Millions)
<b>Total Taxes *</b>	\$7,046,376	\$7,553,959	\$507,583	7.2 %	\$7,296 - \$7,496
<b>Net Income</b>	3,941,898	4,338,420	396,522	10.1	
<b>Withholding</b>	3,564,412	3,908,796	344,384	9.7	
<b>Total Sales &amp; Use</b>	1,749,826	1,843,739	93,914	5.4	
<b>Regular Sales</b>	1,248,905	1,319,451	70,546	5.6	
<b>Net Corporate</b>	411,344	368,145	(43,199)	(10.5)	
<b>Business Excise</b>					
<b>Banks, Insurance, Public Utilities</b>	182,587	206,853	24,266	13.3	
<b>Other Excises**</b>	760,722	796,802	36,080	4.7	

\* Detail may not add to Total for Budget due to rounding.

\*\* Other Excises includes tax revenue collected by other agencies.

Note: The 'White Sheet' for December, containing DOR's final revenue figures, is published after the eighth working day of January.

## FY2001 Year-to-Date Tax Revenue through December 29, 2000



Target range is based on Administration and Finance FY2001 annual estimate of \$15.429 billion (plus \$645 million in MBTA transfer funds).