



Commonwealth of Massachusetts Board of Library Commissioners

98 North Washington Street, Suite 401 • Boston, Massachusetts 02114
617 725-1860 • 800 952-7403 (in-state only) • FAX 617 725-0140

The FY2009 Municipal Pie What's Your Share?

George T. Comeau, Esq., Chairman
Katherine K. Dibble, Vice Chairman
Francis R. Murphy, Secretary
Carol B. Caro
Gregory J. Shesko
Vicki L. Kaufman
Dr. Em Claire Knowles
Mary Rose Quinn
Alice Welch

Massachusetts Board of Library Commissioners

Prepared with LSTA funds

Preparation of this report was supported in part by the U.S. Institute of Museum and Library Services. However, the opinions expressed herein do not necessarily reflect the position or policy of that agency, and no official endorsement by that agency should be inferred.



Commonwealth of Massachusetts Board of Library Commissioners

98 N. Washington Street, Suite 401 • Boston, Massachusetts 02114
617 725-1860 • 800 952-7403 (in-state only) • Fax: 617 725-0140

The FY2009 Municipal Pie...What's Your Library's Share?

The *FY2009 Municipal Pie* reports the amount spent by each Massachusetts Municipality on public library service, compared to the amount spent to operate the entire municipality, from July 1, 2008 through June 30, 2009.

Data in the Municipal Pie report is compiled by the MBLC solely from data provided on the *Schedule A* report, submitted by Town Accountants and City Auditors to the Division of Local Services at the Massachusetts Department of Revenue. The *Schedule A* is submitted to the Division of Local Services each fall, after the close of the fiscal year. The Division of Local Services compiles and releases municipal financial data approximately 1 year later. Expenditure data for this *FY2009 Municipal Pie* Report was received from the Department of Revenue in October, 2010. Please note that in some instances the data in the Municipal Pie report may differ from data reported by libraries to the Board of Library Commissioners on the State Aid to Public Libraries Financial Report Form. Two municipalities included in this report (Hawley & New Ashford) do not have public libraries.

Based upon the Uniform Municipal Accounting System (UMAS), revenues and expenditures are reported on Schedule A for general, special revenue, capital project, enterprise and trust funds. Expenditures are submitted in great detail, and they are aggregated into a database in the following categories: General Government, Police, Fire, Other Public Safety, Education, Public Works/Highways, Human Services, Culture and Recreation (including public library expenditures), Debt Service, Intergovernmental Assessments, Fixed Costs, and Other Expenditures. The Division of Local Services separates public library expenditures from the Culture and Recreation category for inclusion in this report.

This report includes expenditures from the general fund only. Spending from special revenue, enterprise, capital projects, or trust funds is not reflected in these figures. Variations among communities may occur in the "other" and "public works" categories because many communities account for spending on sewer, water, utilities, and other public works functions in enterprise or special revenue funds, rather than the general fund. Nevertheless, the Department of Revenue considers spending from the general fund to be the fairest way to compare operating expenditures from community to community.

State Aid to Public Libraries payments are not included in the FY2009 municipal expenditures data reported for public libraries. These are local aid funds to be held in a separate account for the library to expend without appropriation by the municipality. State Aid to Public Libraries payments are not a revenue source for the general fund.

In FY2009, of the \$17.5 billion general fund dollars spent by the Commonwealth's municipalities, \$218.8 million was spent on public libraries by Massachusetts municipalities. The pie chart on page 1 shows the percentages of municipal spending from municipal general funds in various categories. Education spending leads, with 48.03% of the pie. Public libraries account for the smallest part of the pie, at 1.25% of total expenditures.

This report includes a breakdown of municipalities by population group. Population figures are from the 2009 population estimate.

Dianne Carty, Head, State Aid & Data Coordination
Ann Downey, Systems Analyst
Ned Richards, State Aid Specialist
Uechi Ng, Administrative Assistant

Robert C. Maier, Director
Massachusetts Board of Library Commissioners
98 North Washington Street, Suite 401
Boston, MA 02114

The FY2009 Municipal Pie...What's Your Library's Share?

Compiled: December 2010

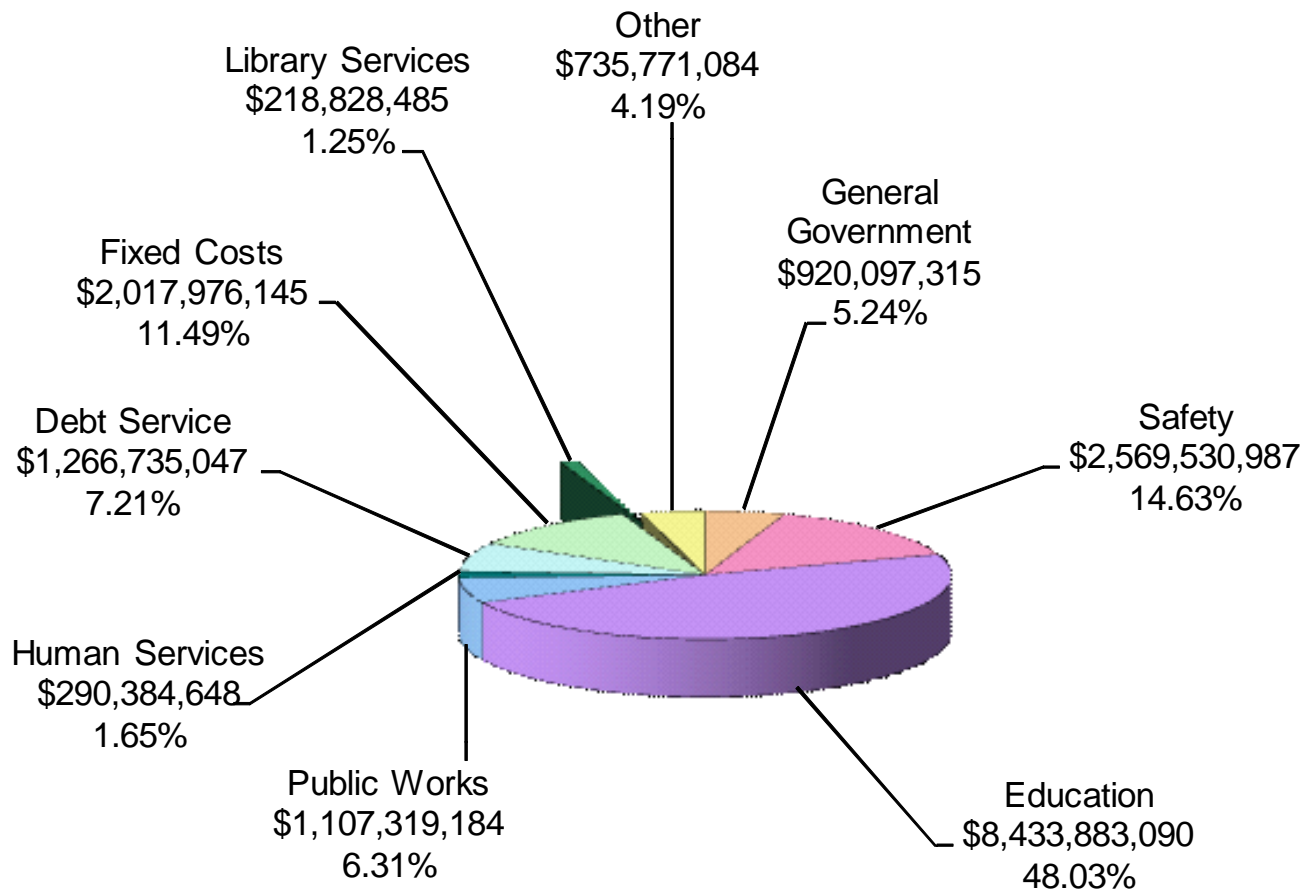
Distributed: February 2011

Table of Contents

FY2009 Municipal Pie	1
Public Library Share of the FY2009 Massachusetts Municipal Pie: Population Group.....	2
Library Expenditures as Percentage of General Fund FY1991 - FY2009.....	13
Appendix Expenditure Categories in the Municipal Pie Report	
Kind of Community Classifications	
Abbreviations for Names of Regions	14
Index	15

Public Library Share of the FY2009 Massachusetts Municipal Pie

FY2009 Massachusetts Municipal Pie



Total Municipal Expenditures: \$17,560,525,985
Total Library Expenditures: \$ 218,828,485

Public Library Share of the FY2009 Massachusetts Municipal Pie

Municipality	2009 Population	Region	Kind of Community 1985(KOC)	Total Municipal Expenditures	Total Municipal Per Capita Expenditures	Total Municipal Expenditures for Library Services	Library Percent of Total Expenditures	Library Per Capita Expenditures
Population Group A (0 - 1,999)								
Alford	390	W	7	1,090,231	2,795.46	1,067	0.10%	2.74
Aquinnah	370	S	7	2,903,392	7,847.01	97,493	3.36%	263.49
Ashfield	1,827	W	7	3,543,665	1,939.61	33,567	0.95%	18.37
Becket	1,802	W	6	4,729,546	2,624.61	24,000	0.51%	13.32
Blandford	1,301	W	6	2,707,115	2,080.80	34,513	1.27%	26.53
Buckland	1,989	W	5	3,461,822	1,740.48	45,151	1.30%	22.70
Charlemont	1,386	W	6	2,729,361	1,969.24	14,579	0.53%	10.52
Chester	1,308	W	5	2,927,165	2,237.89	28,632	0.98%	21.89
Chesterfield	1,270	W	6	2,603,699	2,050.16	21,343	0.82%	16.81
Chilmark	894	S	7	7,195,695	8,048.88	244,452	3.40%	273.44
Clarksburg	1,615	W	5	3,536,520	2,189.80	62,681	1.77%	38.81
Colrain	1,855	W	5	2,975,167	1,603.86	46,247	1.55%	24.93
Conway	1,899	W	7	4,333,354	2,281.91	1,601	0.04%	0.84
Cummington	972	W	7	1,783,349	1,834.72	6,695	0.38%	6.89
Egremont	1,343	W	7	3,149,727	2,345.29	34,074	1.08%	25.37
Erving	1,549	W	5	6,143,876	3,966.35	41,983	0.68%	27.10
Florida	675	W	6	2,301,438	3,409.54	24,560	1.07%	36.39
Gill	1,396	W	5	2,626,092	1,881.15	17,782	0.68%	12.74
Goshen	957	W	6	1,985,561	2,074.78	5,818	0.29%	6.08
Gosnold	85	S	7	1,184,557	13,935.96	4,598	0.39%	54.09
Granville	1,643	W	6	4,478,938	2,726.07	35,591	0.79%	21.66
Hancock	1,264	W	6	1,469,217	1,162.36	5,019	0.34%	3.97
Hawley	337	W	7	1,064,032	3,157.36	1,000	0.09%	2.97
Heath	796	W	6	1,970,733	2,475.80	31,378	1.59%	39.42
Hinsdale	1,909	W	5	3,370,875	1,765.78	42,021	1.25%	22.01
Leverett	1,787	W	7	4,936,139	2,762.25	75,006	1.52%	41.97
Leyden	809	W	6	1,412,375	1,745.83	18,917	1.34%	23.38
Middlefield	559	W	6	1,299,511	2,324.71	2,767	0.21%	4.95
Monroe	96	W	5	582,973	6,072.64	1,229	0.21%	12.80
Monterey	957	W	7	2,879,822	3,009.22	59,479	2.07%	62.15
Montgomery	730	W	4	1,671,477	2,289.69	18,169	1.09%	24.89
Mount Washington	135	W	6	584,357	4,328.57	68	0.01%	0.50
New Ashford	248	W	7	608,618	2,454.10	0	0.00%	0.00
New Braintree	1,135	C	5	1,928,627	1,699.23	14,457	0.75%	12.74
New Marlborough	1,508	W	7	3,895,391	2,583.15	72,250	1.85%	47.91
New Salem	957	W	6	2,094,322	2,188.42	37,394	1.79%	39.07
Oakham	1,946	C	6	2,711,172	1,393.20	51,154	1.89%	26.29
Otis	1,396	W	6	3,708,529	2,656.54	39,175	1.06%	28.06
Pelham	1,399	W	4	3,937,057	2,814.19	36,772	0.93%	26.28

Public Library Share of the FY2009 Massachusetts Municipal Pie

Municipality	2009 Population	Region	Kind of Community 1985(KOC)	Total Municipal Expenditures	Total Municipal Per Capita Expenditures	Total Municipal Expenditures for Library Services	Library Percent of Total Expenditures	Library Per Capita Expenditures
Peru	830	W	6	1,685,854	2,031.15	6,914	0.41%	8.33
Petersham	1,327	C	6	3,124,681	2,354.70	5,777	0.18%	4.35
Phillipston	1,787	C	6	2,875,102	1,608.90	22,862	0.80%	12.79
Plainfield	595	W	6	1,419,455	2,385.64	12,413	0.87%	20.86
Richmond	1,571	W	4	4,821,959	3,069.36	58,465	1.21%	37.22
Rowe	347	W	7	2,897,880	8,351.24	55,315	1.91%	159.41
Royalston	1,353	C	6	1,827,224	1,350.50	47,657	2.61%	35.22
Russell	1,769	W	5	3,060,073	1,729.83	34,599	1.13%	19.56
Sandisfield	849	W	7	2,106,147	2,480.74	13,563	0.64%	15.98
Savoy	707	W	6	1,779,300	2,516.69	374	0.02%	0.53
Shutesbury	1,836	W	7	5,208,525	2,836.89	41,374	0.79%	22.53
Tolland	466	W	6	1,061,924	2,278.81	9,086	0.86%	19.50
Tyringham	340	W	7	1,235,987	3,635.26	4,771	0.39%	14.03
Wales	1,905	W	6	3,617,416	1,898.91	44,076	1.22%	23.14
Warwick	748	W	6	1,431,107	1,913.24	22,266	1.56%	29.77
Washington	541	W	6	1,197,974	2,214.37	3,000	0.25%	5.55
Wendell	1,002	W	3	1,875,733	1,871.99	28,932	1.54%	28.87
West Stockbridge	1,432	W	7	4,656,300	3,251.61	26,446	0.57%	18.47
Westhampton	1,593	W	4	4,221,492	2,650.03	67,333	1.60%	42.27
Whately	1,573	W	7	4,373,255	2,780.20	38,453	0.88%	24.45
Windsor	868	W	7	1,633,320	1,881.71	2,375	0.15%	2.74
Worthington	1,277	W	6	2,515,487	1,969.84	11,684	0.46%	9.15
Totals: Population Group A (0 - 1,999)								
61 municipalities	69,210			167,141,692	2,414.99	1,890,417	1.13%	27.31
						Average	0.98%	31.13
						Median	0.87%	21.89
Population Group B (2,000 - 4,999)								
Ashby	3,108	C	6	5,332,104	1,715.61	62,985	1.18%	20.27
Avon	4,375	S	2	17,404,081	3,978.08	342,337	1.97%	78.25
Berlin	2,950	C	4	11,820,770	4,007.04	109,713	0.93%	37.19
Bernardston	2,235	W	5	4,059,294	1,816.24	51,923	1.28%	23.23
Bolton	4,604	C	4	17,417,123	3,783.04	208,814	1.20%	45.35
Boylston	4,373	C	4	11,415,848	2,610.53	142,490	1.25%	32.58
Brimfield	3,813	C	6	9,184,424	2,408.71	84,310	0.92%	22.11
Brookfield	3,400	C	5	7,002,705	2,059.62	101,359	1.45%	29.81
Carlisle	4,878	N	4	21,401,087	4,387.27	487,203	2.28%	99.88
Cheshire	3,304	W	5	5,880,346	1,779.77	16,980	0.29%	5.14
Deerfield	4,692	W	5	10,787,710	2,299.17	129,038	1.20%	27.50
Dunstable	3,375	N	4	7,226,269	2,141.12	137,919	1.91%	40.86

Public Library Share of the FY2009 Massachusetts Municipal Pie

Municipality	2009 Population	Region	Kind of Community 1985(KOC)	Total Municipal Expenditures	Total Municipal Per Capita Expenditures	Total Municipal Expenditures for Library Services	Library Percent of Total Expenditures	Library Per Capita Expenditures	
East Brookfield	2,088	C	5	3,807,360	1,823.45	63,160	1.66%	30.25	
Edgartown	4,054	S	7	25,771,601	6,357.08	425,741	1.65%	105.02	
Essex	3,342	N	7	9,841,562	2,944.81	76,899	0.78%	23.01	
Hadley	4,753	W	7	11,954,221	2,515.09	127,902	1.07%	26.91	
Hardwick	2,673	W	5	4,062,206	1,519.72	65,651	1.62%	24.56	
Hatfield	3,262	W	5	7,456,852	2,285.98	93,638	1.26%	28.71	
Holland	2,566	W	6	5,525,579	2,153.38	30,173	0.55%	11.76	
Hubbardston	4,479	C	6	6,647,887	1,484.23	18,538	0.28%	4.14	
Huntington	2,233	W	6	4,028,758	1,804.19	64,663	1.61%	28.96	
Lanesborough	2,853	W	6	8,731,261	3,060.38	30,387	0.35%	10.65	
Millville	2,960	C	5	4,563,672	1,541.78	36,066	0.79%	12.18	
Nahant	3,630	N	7	9,279,823	2,556.43	177,461	1.91%	48.89	
Northfield	3,311	W	5	6,634,059	2,003.64	131,953	1.99%	39.85	
Oak Bluffs	3,954	S	7	23,400,279	5,918.13	460,225	1.97%	116.39	
Paxton	4,832	C	4	9,453,954	1,956.53	153,176	1.62%	31.70	
Plympton	2,800	S	3	6,935,336	2,476.91	105,301	1.52%	37.61	
Princeton	3,520	C	4	8,563,025	2,432.68	134,850	1.57%	38.31	
Provincetown	3,417	S	1	19,385,802	5,673.34	301,270	1.55%	88.17	
Sheffield	3,297	W	7	7,824,622	2,373.26	150,989	1.93%	45.80	
Shelburne	2,031	W	5	3,318,761	1,634.05	63,105	1.90%	31.07	
Sherborn	4,285	M	4	21,214,014	4,950.76	360,912	1.70%	84.23	
Stockbridge	2,196	W	7	6,840,912	3,115.17	114,334	1.67%	52.06	
Sunderland	3,909	W	3	7,114,443	1,820.02	104,465	1.47%	26.72	
Tisbury	3,916	S	7	19,746,845	5,042.61	466,832	2.36%	119.21	
Truro	2,123	S	7	13,501,150	6,359.47	267,110	1.98%	125.82	
Wellfleet	2,789	S	7	15,152,983	5,433.12	336,920	2.22%	120.80	
Wenham	4,778	N	4	13,886,488	2,906.34	668,686	4.82%	139.95	
West Brookfield	3,863	C	5	5,334,878	1,381.02	170,482	3.20%	44.13	
West Newbury	4,406	N	6	10,580,970	2,401.49	277,051	2.62%	62.88	
West Tisbury	2,701	S	7	13,032,371	4,825.02	375,235	2.88%	138.92	
Williamsburg	2,522	W	5	5,345,719	2,119.63	112,212	2.10%	44.49	
Totals: Population Group B (2,000 - 4,999)									
43 municipalities	148,650			447,869,154	3,012.91	7,840,458	1.75%	52.74	
							Average	1.64%	51.29
							Median	1.62%	37.61

Public Library Share of the FY2009 Massachusetts Municipal Pie

Municipality	2009 Population	Region	Kind of Community 1985(KOC)	Total Municipal Expenditures	Total Municipal Per Capita Expenditures	Total Municipal Expenditures for Library Services	Library Percent of Total Expenditures	Library Per Capita Expenditures
Population Group C (5,000 - 9,999)								
Adams	8,247	W	5	12,100,164	1,467.22	276,494	2.29%	33.53
Ashburnham	6,070	C	6	12,396,438	2,042.25	216,197	1.74%	35.62
Ayer	7,854	C	1	22,362,950	2,847.33	486,150	2.17%	61.90
Barre	5,616	C	5	8,565,097	1,525.12	166,538	1.94%	29.65
Berkley	6,498	S	6	15,752,427	2,424.20	108,005	0.69%	16.62
Blackstone	9,725	C	5	15,426,344	1,586.26	299,392	1.94%	30.79
Boxborough	5,174	C	4	18,544,307	3,584.13	287,149	1.55%	55.50
Boxford	8,164	N	4	29,752,030	3,644.30	396,406	1.33%	48.56
Brewster	9,976	S	7	33,366,552	3,344.68	499,544	1.50%	50.07
Chatham	6,753	S	7	31,389,791	4,648.27	390,100	1.24%	57.77
Cohasset	7,409	S	4	32,482,554	4,384.20	496,188	1.53%	66.97
Dalton	6,553	W	5	12,870,544	1,964.07	160,440	1.25%	24.48
Dighton	6,779	S	5	12,883,957	1,900.57	168,782	1.31%	24.90
Douglas	8,099	C	6	21,209,294	2,618.75	195,506	0.92%	24.14
Dover	5,723	M	4	26,394,870	4,612.07	403,554	1.53%	70.51
Eastham	5,463	S	7	18,947,929	3,468.41	261,885	1.38%	47.94
Freetown	9,076	S	3	19,037,250	2,097.54	78,519	0.41%	8.65
Georgetown	8,726	N	4	21,019,546	2,408.84	282,457	1.34%	32.37
Granby	6,305	W	3	13,805,394	2,189.59	124,458	0.90%	19.74
Great Barrington	7,358	W	1	19,464,152	2,645.30	423,985	2.18%	57.62
Groveland	7,456	N	4	11,370,988	1,525.08	176,519	1.55%	23.67
Halifax	7,790	S	6	17,295,826	2,220.26	281,486	1.63%	36.13
Hamilton	8,251	N	4	23,385,476	2,834.26	521,865	2.23%	63.25
Hampden	5,386	W	4	9,184,331	1,705.22	74,062	0.81%	13.75
Harvard	6,156	C	3	20,163,762	3,275.46	477,846	2.37%	77.62
Hopedale	6,241	C	5	17,243,972	2,763.01	240,062	1.39%	38.47
Lancaster	7,034	C	3	15,483,550	2,201.24	246,732	1.59%	35.08
Lee	5,740	W	5	15,509,597	2,702.02	292,685	1.89%	50.99
Lenox	5,084	W	3	15,867,317	3,121.03	241,452	1.52%	47.49
Lincoln	8,653	M	4	26,745,824	3,090.93	843,384	3.15%	97.47
Littleton	8,975	N	2	29,453,051	3,281.68	448,347	1.52%	49.96
Manchester-by-the-Sea	5,205	N	4	20,852,095	4,006.17	358,510	1.72%	68.88
Marion	5,183	S	3	16,735,911	3,229.00	133,593	0.80%	25.78
Mattapoissett	6,519	S	3	20,181,273	3,095.76	277,652	1.38%	42.59
Mendon	5,703	C	4	11,758,320	2,061.78	190,744	1.62%	33.45
Merrimac	6,609	N	5	11,457,463	1,733.62	219,091	1.91%	33.15
Middleton	9,241	N	2	22,867,835	2,474.61	458,711	2.01%	49.64
Millis	8,034	M	4	22,361,050	2,783.30	303,725	1.36%	37.80
Monson	9,073	W	5	22,918,786	2,526.04	239,225	1.04%	26.37

Public Library Share of the FY2009 Massachusetts Municipal Pie

Municipality	2009 Population	Region	Kind of Community 1985(KOC)	Total Municipal Expenditures	Total Municipal Per Capita Expenditures	Total Municipal Expenditures for Library Services	Library Percent of Total Expenditures	Library Per Capita Expenditures
Montague	8,175	W	5	14,539,391	1,778.52	285,042	1.96%	34.87
Newbury	6,912	N	6	16,669,747	2,411.71	257,645	1.55%	37.28
North Brookfield	5,057	C	5	11,000,221	2,175.25	88,636	0.81%	17.53
Orange	7,699	W	5	14,960,273	1,943.14	242,867	1.62%	31.55
Orleans	6,256	S	7	24,362,624	3,894.28	484,154	1.99%	77.39
Plainville	8,289	S	3	22,750,157	2,744.62	192,105	0.84%	23.18
Rochester	5,312	S	3	15,721,235	2,959.57	170,293	1.08%	32.06
Rockport	7,675	N	7	22,521,016	2,934.33	418,669	1.86%	54.55
Rowley	5,826	N	3	12,530,404	2,150.77	191,566	1.53%	32.88
Rutland	8,068	C	6	13,781,335	1,708.15	161,898	1.17%	20.07
Salisbury	8,608	N	3	17,963,391	2,086.83	161,839	0.90%	18.80
Shirley	8,110	C	5	14,818,322	1,827.17	182,283	1.23%	22.48
Southampton	5,991	W	6	12,492,618	2,085.23	97,127	0.78%	16.21
Southborough	9,724	C	4	39,635,706	4,076.07	370,319	0.93%	38.08
Southwick	9,706	W	3	16,408,017	1,690.50	344,503	2.10%	35.49
Sterling	7,786	C	4	18,670,661	2,397.98	299,535	1.60%	38.47
Stow	6,671	M	4	20,122,086	3,016.35	215,867	1.07%	32.36
Sturbridge	8,859	C	3	22,719,345	2,564.55	341,500	1.50%	38.55
Sutton	9,180	C	6	25,367,499	2,763.34	198,390	0.78%	21.61
Templeton	7,963	C	5	11,812,102	1,483.37	54,465	0.46%	6.84
Topsfield	6,144	N	4	20,394,715	3,319.45	449,822	2.21%	73.21
Townsend	9,687	C	6	16,260,442	1,678.58	169,048	1.04%	17.45
Upton	6,722	C	7	15,574,611	2,316.96	184,810	1.19%	27.49
Ware	9,888	W	5	25,624,463	2,591.47	242,205	0.95%	24.49
Warren	5,287	C	5	6,911,977	1,307.35	174,137	2.52%	32.94
West Boylston	8,109	C	2	19,630,855	2,420.87	307,344	1.57%	37.90
West Bridgewater	6,699	S	5	20,039,230	2,991.38	333,668	1.67%	49.81
Westminster	7,478	C	3	17,552,282	2,347.19	339,150	1.93%	45.35
Williamstown	8,028	W	7	16,176,951	2,015.07	397,592	2.46%	49.53
Totals: Population Group C (5,000 - 9,999)								
68 municipalities	497,810			1,275,619,693	2562.46	19,103,919	1.50%	38.38
						Average	1.50%	38.78
						Median	1.53%	35.29
Population Group D (10,000 - 14,999)								
Acushnet	10,377	S	5	21,411,895	2,063.40	186,174	0.87%	17.94
Athol	11,862	C	5	15,162,798	1,278.27	391,185	2.58%	32.98
Bedford	13,814	M	2	66,933,151	4,845.31	1,097,112	1.64%	79.42
Belchertown	14,141	W	3	38,769,024	2,741.60	373,607	0.96%	26.42
Carver	12,034	S	3	30,571,709	2,540.44	353,136	1.16%	29.34

Public Library Share of the FY2009 Massachusetts Municipal Pie

Municipality	2009 Population	Region	Kind of Community 1985(KOC)	Total Municipal Expenditures	Total Municipal Per Capita Expenditures	Total Municipal Expenditures for Library Services	Library Percent of Total Expenditures	Library Per Capita Expenditures
Charlton	12,637	C	6	18,765,582	1,484.97	272,336	1.45%	21.55
Clinton	14,196	C	1	32,484,746	2,288.30	336,754	1.04%	23.72
Dudley	11,224	C	5	11,714,251	1,043.68	156,934	1.34%	13.98
Duxbury	14,362	S	4	46,607,177	3,245.17	1,123,154	2.41%	78.20
East Bridgewater	14,097	S	3	35,510,824	2,519.03	450,444	1.27%	31.95
Groton	10,781	C	4	26,664,423	2,473.28	720,483	2.70%	66.83
Hanover	14,115	S	4	42,835,078	3,034.72	502,670	1.17%	35.61
Hanson	10,139	S	3	17,699,387	1,745.67	181,226	1.02%	17.87
Harwich	12,254	S	3	47,863,650	3,905.96	640,622	1.34%	52.28
Holbrook	10,738	S	2	34,629,876	3,224.98	356,665	1.03%	33.22
Holliston	14,193	M	4	44,927,498	3,165.47	415,443	0.92%	29.27
Hopkinton	14,657	C	4	55,972,934	3,818.85	336,670	0.60%	22.97
Hull	11,123	S	5	32,232,169	2,897.79	274,874	0.85%	24.71
Ipswich	13,412	N	7	36,297,650	2,706.36	514,281	1.42%	38.34
Kingston	12,484	S	3	33,701,402	2,699.57	563,644	1.67%	45.15
Lakeville	10,623	S	6	21,353,132	2,010.08	278,681	1.31%	26.23
Leicester	11,140	C	5	24,958,504	2,240.44	153,783	0.62%	13.80
Lunenburg	10,157	C	3	25,866,047	2,546.62	308,624	1.19%	30.39
Lynnfield	12,035	N	4	37,821,894	3,142.66	632,236	1.67%	52.53
Mashpee	14,367	S	3	47,126,219	3,280.17	319,000	0.68%	22.20
Maynard	10,629	M	1	29,361,217	2,762.37	489,522	1.67%	46.06
Medfield	12,274	M	4	43,482,502	3,542.65	618,177	1.42%	50.36
Medway	12,901	M	4	37,508,209	2,907.39	200,971	0.54%	15.58
Millbury	13,579	C	5	31,231,537	2,299.99	362,364	1.16%	26.69
Nantucket	11,322	S	7	58,374,652	5,155.86	641,650	1.10%	56.67
Norfolk	11,188	S	4	28,695,092	2,564.81	481,234	1.68%	43.01
North Adams	13,816	W	1	33,812,820	2,447.37	397,958	1.18%	28.80
North Reading	14,463	N	4	47,399,382	3,277.29	434,585	0.92%	30.05
Northborough	14,863	C	2	43,023,812	2,894.69	645,208	1.50%	43.41
Northbridge	14,720	C	5	35,277,704	2,396.58	89,351	0.25%	6.07
Norwell	10,336	S	4	37,364,125	3,614.95	557,565	1.49%	53.94
Oxford	13,813	C	5	31,743,668	2,298.10	425,720	1.34%	30.82
Palmer	13,124	W	5	30,800,445	2,346.88	729,927	2.37%	55.62
Pepperell	11,508	C	6	18,134,673	1,575.83	427,117	2.36%	37.11
Raynham	13,648	S	3	28,793,107	2,109.69	273,100	0.95%	20.01
Rehoboth	11,515	S	6	19,853,279	1,724.12	191,675	0.97%	16.65
Seekonk	13,869	S	3	39,478,991	2,846.56	767,227	1.94%	55.32
Spencer	12,017	C	5	14,378,056	1,196.48	327,895	2.28%	27.29
Swampscott	14,044	N	2	47,233,827	3,363.27	559,752	1.19%	39.86
Tyngsborough	11,980	N	3	30,553,531	2,550.38	292,809	0.96%	24.44

Public Library Share of the FY2009 Massachusetts Municipal Pie

Municipality	2009 Population	Region	Kind of Community 1985(KOC)	Total Municipal Expenditures	Total Municipal Per Capita Expenditures	Total Municipal Expenditures for Library Services	Library Percent of Total Expenditures	Library Per Capita Expenditures
Uxbridge	12,887	C	5	34,657,109	2,689.31	271,772	0.78%	21.09
Wayland	13,503	M	4	58,211,376	4,311.00	982,299	1.69%	72.75
Weston	11,954	M	4	56,609,933	4,735.65	1,053,780	1.86%	88.15
Westwood	14,330	M	2	61,437,496	4,287.33	976,046	1.59%	68.11
Whitman	14,189	S	5	22,956,886	1,617.94	343,096	1.49%	24.18
Wilbraham	14,179	W	4	30,085,661	2,121.85	644,827	2.14%	45.48
Winchendon	10,316	C	5	22,735,300	2,203.89	150,126	0.66%	14.55
Wrentham	11,224	S	5	31,120,576	2,772.68	306,946	0.99%	27.35
Totals: Population Group D (10,000 - 14,999)								
53 municipalities	669,153			1,852,195,986	2,767.97	24,582,437	1.33%	36.74
						Average	1.35%	36.53
						Median	1.27%	30.39
Population Group E (15,000 - 24,999)								
Abington	16,789	S	5	39,452,156	2,349.88	425,958	1.08%	25.37
Acton	21,234	M	2	73,166,122	3,445.71	1,075,617	1.47%	50.66
Amesbury	16,708	N	5	46,819,876	2,802.24	585,639	1.25%	35.05
Ashland	15,383	M	2	43,274,281	2,813.12	274,356	0.63%	17.84
Auburn	16,474	C	2	38,880,827	2,360.13	536,164	1.38%	32.55
Bellingham	15,853	C	3	40,239,494	2,538.29	483,113	1.20%	30.47
Belmont	23,675	M	2	67,068,242	2,832.87	1,631,553	2.43%	68.91
Bourne	19,390	S	3	44,844,644	2,312.77	553,864	1.24%	28.56
Canton	22,382	S	2	56,880,540	2,541.35	965,219	1.70%	43.12
Concord	17,580	M	2	66,968,256	3,809.34	1,754,709	2.62%	99.81
Dedham	24,825	M	2	75,578,203	3,044.44	960,559	1.27%	38.69
Dennis	15,434	S	7	43,713,465	2,832.28	413,691	0.95%	26.80
East Longmeadow	15,936	W	2	45,092,627	2,829.61	606,624	1.35%	38.07
Easthampton	16,324	W	5	31,757,370	1,945.44	187,575	0.59%	11.49
Easton	23,005	S	4	58,608,965	2,547.66	449,465	0.77%	19.54
Fairhaven	16,111	S	1	34,072,771	2,114.88	590,595	1.73%	36.66
Foxborough	17,087	S	2	48,614,678	2,845.13	881,017	1.81%	51.56
Gardner	20,972	C	1	39,708,362	1,893.40	701,950	1.77%	33.47
Grafton	17,800	C	2	36,490,537	2,050.03	500,808	1.37%	28.14
Greenfield	17,537	W	1	42,425,802	2,419.22	610,604	1.44%	34.82
Hingham	23,270	S	4	69,849,843	3,001.71	1,415,875	2.03%	60.85
Holden	17,658	C	4	34,719,880	1,966.24	714,308	2.06%	40.45
Hudson	20,005	C	2	54,459,396	2,722.29	646,537	1.19%	32.32
Longmeadow	15,527	W	4	45,837,422	2,952.11	662,791	1.45%	42.69
Ludlow	22,161	W	3	49,407,507	2,229.48	373,093	0.76%	16.84
Mansfield	23,303	S	3	71,398,137	3,063.90	621,936	0.87%	26.69

Public Library Share of the FY2009 Massachusetts Municipal Pie

Municipality	2009 Population	Region	Kind of Community 1985(KOC)	Total Municipal Expenditures	Total Municipal Per Capita Expenditures	Total Municipal Expenditures for Library Services	Library Percent of Total Expenditures	Library Per Capita Expenditures
Marblehead	19,962	N	2	57,732,237	2,892.11	1,195,651	2.07%	59.90
Marshfield	24,888	S	4	69,296,623	2,784.34	665,710	0.96%	26.75
Middleborough	21,375	S	5	61,251,846	2,865.58	566,874	0.93%	26.52
Newburyport	17,594	N	5	48,401,026	2,751.00	1,202,870	2.49%	68.37
Norton	19,315	S	3	46,303,761	2,397.30	295,314	0.64%	15.29
Pembroke	18,848	S	3	45,900,019	2,435.27	536,871	1.17%	28.48
Reading	23,512	N	2	74,663,261	3,175.54	1,201,625	1.61%	51.11
Rockland	18,086	S	5	39,109,610	2,162.42	377,668	0.97%	20.88
Sandwich	19,960	S	4	62,474,118	3,129.97	869,255	1.39%	43.55
Scituate	18,297	S	4	53,045,326	2,899.13	895,453	1.69%	48.94
Sharon	18,044	S	4	56,036,931	3,105.57	811,338	1.45%	44.96
Somerset	18,556	S	2	41,203,351	2,220.49	549,469	1.33%	29.61
South Hadley	17,387	W	2	35,507,055	2,042.16	547,484	1.54%	31.49
Southbridge	17,487	C	1	41,961,487	2,399.58	361,743	0.86%	20.69
Stoneham	21,560	N	2	52,765,458	2,447.38	690,065	1.31%	32.01
Sudbury	17,714	M	4	66,493,832	3,753.74	963,291	1.45%	54.38
Swansea	16,175	S	3	31,162,145	1,926.56	229,016	0.73%	14.16
Walpole	23,461	S	2	64,042,209	2,729.73	673,394	1.05%	28.70
Wareham	21,349	S	3	43,635,478	2,043.91	338,051	0.77%	15.83
Webster	16,877	C	1	28,597,836	1,694.49	275,893	0.96%	16.35
Westborough	18,391	C	2	71,364,195	3,880.39	886,376	1.24%	48.20
Westford	22,624	N	4	87,015,804	3,846.17	1,329,863	1.53%	58.78
Westport	15,504	S	3	29,079,404	1,875.61	265,247	0.91%	17.11
Wilmington	22,373	N	2	66,058,479	2,952.60	933,383	1.41%	41.72
Winchester	21,497	M	2	73,481,965	3,418.24	1,513,341	2.06%	70.40
Winthrop	19,235	N	5	35,907,708	1,866.79	291,928	0.81%	15.18
Yarmouth	23,848	S	3	55,286,595	2,318.29	687,868	1.24%	28.84
Totals: Population Group E (15,000 - 24,999)								
53 municipalities	1,026,342			2,737,107,162	2,666.86	37,778,661	1.38%	36.81
						Average	1.34%	36.41
						Median	1.31%	32.32
Population Group F (25,000 - 49,999)								
Agawam	28,616	W	3	67,096,808	2,344.73	963,268	1.44%	33.66
Amherst	36,246	W	3	58,809,370	1,622.51	1,596,471	2.71%	44.05
Andover	33,700	N	2	114,617,589	3,401.12	2,378,482	2.08%	70.58
Arlington	41,724	M	2	91,823,370	2,200.73	1,936,482	2.11%	46.41
Attleboro	43,645	S	1	90,137,649	2,065.25	894,244	0.99%	20.49
Barnstable	46,297	S	3	121,505,802	2,624.49	1,589,264	1.31%	34.33
Beverly	39,513	N	2	82,591,348	2,090.23	1,699,757	2.06%	43.02

Public Library Share of the FY2009 Massachusetts Municipal Pie

Municipality	2009 Population	Region	Kind of Community 1985(KOC)	Total Municipal Expenditures	Total Municipal Per Capita Expenditures	Total Municipal Expenditures for Library Services	Library Percent of Total Expenditures	Library Per Capita Expenditures
Billerica	39,865	N	2	113,736,955	2,853.05	1,268,920	1.12%	31.83
Braintree	35,296	S	2	83,643,733	2,369.78	1,181,753	1.41%	33.48
Bridgewater	27,263	S	3	37,999,751	1,393.82	371,944	0.98%	13.64
Burlington	25,688	N	2	85,520,919	3,329.22	1,187,724	1.39%	46.24
Chelmsford	34,111	N	2	94,960,791	2,783.88	1,469,455	1.55%	43.08
Chelsea	37,483	B	1	111,733,253	2,980.90	272,873	0.24%	7.28
Danvers	27,232	N	2	72,401,033	2,658.67	1,124,958	1.55%	41.31
Dartmouth	34,420	S	3	59,717,259	1,734.96	1,027,935	1.72%	29.86
Dracut	29,415	N	3	53,337,038	1,813.26	687,001	1.29%	23.36
Everett	38,303	N	1	123,146,678	3,215.07	823,875	0.67%	21.51
Falmouth	32,824	S	3	101,681,831	3,097.79	1,680,971	1.65%	51.21
Fitchburg	42,161	C	1	80,815,368	1,916.83	388,977	0.48%	9.23
Franklin	32,079	M	2	88,386,326	2,755.27	883,541	1.00%	27.54
Gloucester	30,534	N	1	80,899,602	2,649.49	738,871	0.91%	24.20
Holyoke	40,005	W	1	127,465,293	3,186.23	432,204	0.34%	10.80
Leominster	42,293	C	1	89,580,226	2,118.09	1,255,082	1.40%	29.68
Lexington	30,929	M	2	113,957,207	3,684.48	1,886,536	1.66%	61.00
Marlborough	38,469	C	2	93,257,217	2,424.22	747,948	0.80%	19.44
Melrose	27,093	N	2	58,078,214	2,143.66	957,014	1.65%	35.32
Methuen	44,371	N	1	109,289,167	2,463.08	890,000	0.81%	20.06
Milford	27,616	C	1	68,668,515	2,486.55	1,001,658	1.46%	36.27
Milton	26,186	S	2	70,612,103	2,696.56	923,277	1.31%	35.26
Natick	32,338	M	2	95,619,884	2,956.89	1,858,558	1.94%	57.47
Needham	29,037	M	2	98,526,072	3,393.12	1,282,763	1.30%	44.18
North Andover	27,759	N	2	67,086,260	2,416.74	790,024	1.18%	28.46
North Attleborough	27,825	S	5	70,294,023	2,526.29	569,672	0.81%	20.47
Northampton	28,370	W	1	69,997,346	2,467.30	1,328,415	1.90%	46.82
Norwood	28,459	M	2	101,746,465	3,575.19	1,384,216	1.36%	48.64
Pittsfield	42,432	W	1	96,145,730	2,265.88	899,025	0.94%	21.19
Randolph	31,040	S	2	71,525,415	2,304.30	655,106	0.92%	21.11
Salem	41,361	N	1	105,235,897	2,544.33	1,070,789	1.02%	25.89
Saugus	27,946	N	2	59,995,457	2,146.84	321,334	0.54%	11.50
Shrewsbury	33,973	C	2	83,183,046	2,448.50	1,154,295	1.39%	33.98
Stoughton	27,169	S	2	62,013,280	2,282.50	956,998	1.54%	35.22
Tewksbury	30,597	N	2	71,461,582	2,335.57	971,629	1.36%	31.76
Wakefield	25,199	N	2	57,373,507	2,276.82	1,150,910	2.01%	45.67
Watertown	33,120	M	1	92,328,601	2,787.70	2,088,503	2.26%	63.06
Wellesley	27,412	M	2	100,419,085	3,663.33	2,063,982	2.06%	75.29
West Springfield	28,165	W	1	71,468,529	2,537.49	810,667	1.13%	28.78
Westfield	42,133	W	1	92,698,034	2,200.13	770,000	0.83%	18.28

Public Library Share of the FY2009 Massachusetts Municipal Pie

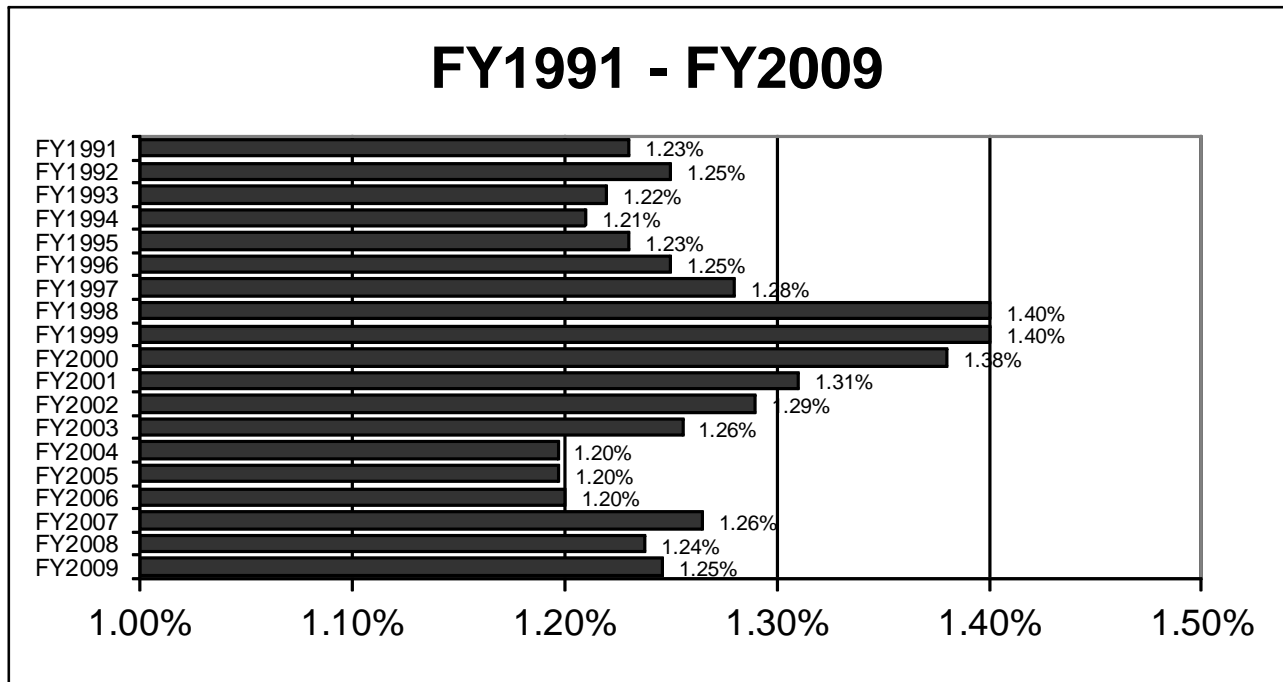
Municipality	2009 Population	Region	Kind of Community 1985(KOC)	Total Municipal Expenditures	Total Municipal Per Capita Expenditures	Total Municipal Expenditures for Library Services	Library Percent of Total Expenditures	Library Per Capita Expenditures
Woburn	38,987	M	2	103,556,609	2,656.18	1,073,231	1.04%	27.53
Totals: Population Group F (25,000 - 49,999)								
48 municipalities	1,616,699			4,116,145,237	2,546.02	53,460,602	1.30%	33.07
Average							1.33%	33.95
Median							1.34%	32.66
Population Group G (50,000 - 99,999)								
Brockton	93,529	S	1	220,350,434	2,355.96	1,693,108	0.77%	18.10
Brookline	56,410	M	2	180,112,560	3,192.92	3,547,838	1.97%	62.89
Chicopee	55,994	W	1	127,265,619	2,272.84	1,516,829	1.19%	27.09
Fall River	90,885	S	1	168,622,275	1,855.34	1,054,657	0.63%	11.60
Framingham	67,185	M	2	166,633,370	2,480.22	2,497,900	1.50%	37.18
Haverhill	61,588	N	1	122,666,440	1,991.73	1,167,889	0.95%	18.96
Lawrence	70,592	N	1	206,399,947	2,923.84	1,073,407	0.52%	15.21
Lynn	87,532	N	1	210,126,569	2,400.57	988,359	0.47%	11.29
Malden	56,151	B	1	123,588,720	2,201.01	1,464,613	1.19%	26.08
Medford	55,578	M	1	107,963,904	1,942.57	1,155,646	1.07%	20.79
New Bedford	91,112	S	1	220,075,807	2,415.44	2,199,571	1.00%	24.14
Newton	84,600	M	2	242,114,040	2,861.87	4,568,697	1.89%	54.00
Peabody	51,726	N	2	117,059,077	2,263.06	1,605,651	1.37%	31.04
Plymouth	56,845	S	3	126,823,302	2,231.04	1,472,856	1.16%	25.91
Quincy	91,073	S	1	194,710,561	2,137.96	2,817,593	1.45%	30.94
Revere	51,693	N	1	102,754,834	1,987.79	406,405	0.40%	7.86
Somerville	76,460	M	1	140,575,269	1,838.55	1,815,300	1.29%	23.74
Taunton	55,815	S	1	150,068,560	2,688.68	993,931	0.66%	17.81
Waltham	60,605	M	1	143,308,722	2,364.64	2,180,350	1.52%	35.98
Weymouth	54,005	S	2	108,994,094	2,018.22	1,024,600	0.94%	18.97
Totals: Population Group G (50,000 - 99,999)								
20 municipalities	1,369,378			3,180,214,104	2,322.38	35,245,200	1.11%	25.74
Average							1.10%	25.98
Median							1.12%	23.94

Public Library Share of the FY2009 Massachusetts Municipal Pie

Municipality	2009 Population	Region	Kind of Community 1985(KOC)	Total Municipal Expenditures	Total Municipal Per Capita Expenditures	Total Municipal Expenditures for Library Services	Library Percent of Total Expenditures	Library Per Capita Expenditures	
Population Group H (100,000 +)									
Boston	645,169	B	1	2,291,661,842	3,552.03	23,253,996	1.01%	36.04	
Cambridge	108,780	M	1	355,238,271	3,265.66	4,893,254	1.38%	44.98	
Lowell	104,400	N	1	252,372,409	2,417.36	885,377	0.35%	8.48	
Springfield	155,575	W	1	462,671,407	2,973.94	5,077,158	1.10%	32.63	
Worcester	182,421	C	1	422,289,028	2,314.91	4,817,006	1.14%	26.41	
Totals: Population Group H (100,000 +)									
5 municipalities	1,196,345			3,784,232,957	3,163.16	38,926,791	1.03%	32.54	
							Average	1.00%	29.71
							Median	1.10%	32.63
State Totals									
351 municipalities	6,593,587			17,560,525,985	2,663.27	218,828,485	1.25%	33.19	
							Average	1.33%	36.77
							Median	1.30%	30.79

Public Library Share of the FY2009 Massachusetts Municipal Pie

Library Expenditures as Percentage of General Fund



Fiscal Year	Public Libraries	Education	General Government	Safety	Public Works	Human Services	Fixed Costs	Debt Service	Other
FY1991	1.23%	42.24%	5.37%	15.51%	8.34%	3.65%			23.67%
FY1992	1.25%	42.15%	5.13%	15.43%	8.06%	3.53%	13.13%	6.39%	4.92%
FY1993	1.22%	42.37%	5.03%	15.14%	8.51%	3.34%	13.24%	6.25%	4.90%
FY1994	1.21%	44.51%	4.86%	14.76%	8.33%	3.25%	12.53%	5.80%	4.74%
FY1995	1.23%	45.43%	4.86%	15.11%	7.58%	3.33%	11.91%	5.87%	4.68%
FY1996	1.25%	45.88%	4.95%	14.83%	8.04%	3.26%	11.31%	5.88%	4.60%
FY1997	1.28%	47.57%	5.02%	14.83%	7.41%	1.33%	11.20%	5.99%	5.37%
FY1998	1.40%	48.25%	5.09%	14.98%	7.11%	1.77%	10.88%	6.11%	4.41%
FY1999	1.40%	47.79%	4.99%	14.88%	6.88%	1.59%	10.74%	6.88%	5.60%
FY2000	1.38%	47.90%	5.06%	15.24%	6.96%	1.67%	10.95%	6.71%	4.12%
FY2001	1.31%	47.68%	5.11%	14.82%	7.38%	1.65%	11.05%	7.04%	3.95%
FY2002	1.29%	47.89%	5.13%	14.81%	6.54%	1.64%	11.42%	7.50%	3.77%
FY2003	1.26%	47.75%	4.86%	14.38%	6.67%	1.69%	12.58%	7.43%	3.38%
FY2004	1.20%	46.89%	5.16%	13.95%	6.70%	1.54%	13.06%	7.83%	3.66%
FY2005	1.20%	46.43%	4.74%	14.14%	6.59%	1.55%	13.74%	7.54%	4.06%
FY2006	1.20%	46.67%	4.79%	13.92%	6.03%	1.54%	14.69%	7.37%	3.79%
FY2007	1.26%	48.66%	5.04%	14.62%	6.05%	1.61%	11.30%	7.40%	4.06%
FY2008	1.24%	48.48%	5.12%	14.57%	6.21%	1.62%	11.37%	7.33%	4.05%
FY2009	1.25%	48.03%	5.24%	14.63%	6.31%	1.65%	11.49%	7.21%	

Appendix

Expenditure Categories in the Municipal Pie Report	
<i>Report Categories:</i>	<i>Schedule A Expenditure Categories:</i>
Debt Service	Retirement of debt principal, interest on long term debt, interest on short term debt and other interest
Education	Education expenditures
Fixed Costs	Workers' Compensation, unemployment, health insurance, other employee benefits and retirement
General Government	Legislative, executive, accountant/auditor, collector, treasurer, law town/city counsel, public building/properties maintenance, assessors, operation support, license and registration, land uses, conservation commission and other
Human Services	Health services, clinical services, special services, veterans' services and other
Other	Culture and recreation (recreation, parks, historical commission, celebrations and other,) intergovernmental assessments and other (court judgments and other unclassified expenditures.)
Library Services	Library expenditures, less capital and regional library expenditures
Public Works	Highways/streets, snow and ice, waste collection and disposal, sewerage collection and disposal, water distribution, parking garage, street lighting, and other
Safety	Fire, police, emergency medical services, protective inspection such as building and gas and other services such as harbormaster and dog officer.
Expenditure categories in the Municipal Pie Report are based on <u>Schedule A</u> expenditures reported to the Department of Revenue	

Kind of Community Classifications		
"Kind of Community" (KOC) is a classification of communities developed by the Massachusetts Department of Education in 1985.		
1	Urbanized Centers	Manufacturing and commercial centers, densely populated, culturally diverse
2	Economically Developed Suburbs	Suburbs with high levels of economic activity, social complexity, and relatively high income levels
3	Growth Communities	Rapidly expanding communities in transition
4	Residential Suburbs	Affluent communities with low levels of economic activity
5	Rural Economic Centers	Historic manufacturing and commercial communities, moderate levels of economic activity
6	Small Rural Communities	Small towns, sparsely populated, economically undeveloped
7	Resort/Retirement and Artisan	Communities with high property values, relatively low income levels, and enclaves of retirees, artists, vacationers and academicians

Abbreviations for the Names of the Regions
Regional Library System of which the library is a member: B=Boston, C=Central, M=Metrowest, N=Northeast, S=Southeastern, W=Western

Public Library Share of the FY2009 Massachusetts Municipal Pie

Municipality	Page	Municipality	Page	Municipality	Page
Abington	8	Chilmark	2	Harvard	5
Acton	8	Clarksburg	2	Harwich	7
Acushnet	6	Clinton	7	Hatfield	4
Adams	5	Cohasset	5	Haverhill	11
Agawam	9	Colrain	2	Hawley	2
Alford	2	Concord	8	Heath	2
Amesbury	8	Conway	2	Hingham	8
Amherst	9	Cummington	2	Hinsdale	2
Andover	9	Dalton	5	Holbrook	7
Aquinnah	2	Danvers	10	Holden	8
Arlington	9	Dartmouth	10	Holland	4
Ashburnham	5	Dedham	8	Holliston	7
Ashby	3	Deerfield	3	Holyoke	10
Ashfield	2	Dennis	8	Hopedale	5
Ashland	8	Dighton	5	Hopkinton	7
Athol	6	Douglas	5	Hubbardston	4
Attleboro	9	Dover	5	Hudson	8
Auburn	8	Dracut	10	Hull	7
Avon	3	Dudley	7	Huntington	4
Ayer	5	Dunstable	3	Ipswich	7
Barnstable	9	Duxbury	7	Kingston	7
Barre	5	East Bridgewater	7	Lakeville	7
Becket	2	East Brookfield	4	Lancaster	5
Bedford	6	East Longmeadow	8	Lanesborough	4
Belchertown	6	Eastham	5	Lawrence	11
Bellingham	8	Easthampton	8	Lee	5
Belmont	8	Easton	8	Leicester	7
Berkley	5	Edgartown	4	Lenox	5
Berlin	3	Egremont	2	Leominster	10
Bernardston	3	Erving	2	Leverett	2
Beverly	9	Essex	4	Lexington	10
Billerica	9	Everett	10	Leyden	2
Blackstone	5	Fairhaven	8	Lincoln	5
Blandford	2	Fall River	11	Littleton	5
Bolton	3	Falmouth	10	Longmeadow	8
Boston	12	Fitchburg	10	Lowell	12
Bourne	8	Florida	2	Ludlow	8
Boxborough	5	Foxborough	8	Lunenburg	7
Boxford	5	Framingham	11	Lynn	11
Boylston	3	Franklin	10	Lynnfield	7
Braintree	10	Freetown	5	Malden	11
Brewster	5	Gardner	8	Manchester-by-the-Sea	5
Bridgewater	10	Georgetown	5	Mansfield	8
Brimfield	3	Gill	2	Marblehead	8
Brockton	11	Gloucester	10	Marion	5
Brookfield	3	Goshen	2	Marlborough	10
Brookline	11	Gosnold	2	Marshfield	9
Buckland	2	Grafton	8	Mashpee	7
Burlington	10	Granby	5	Mattapoissett	5
Cambridge	12	Granville	2	Maynard	7
Canton	8	Great Barrington	5	Medfield	7
Carlisle	3	Greenfield	8	Medford	11
Carver	6	Groton	7	Medway	7
Charlemont	2	Groveland	5	Melrose	10
Charlton	7	Hadley	4	Mendon	5
Chatham	5	Halifax	5	Merrimac	5
Chelmsford	10	Hamilton	5	Methuen	10
Chelsea	10	Hampden	5	Middleborough	9
Cheshire	3	Hancock	2	Middlefield	2
Chester	2	Hanover	7	Middleton	5
Chesterfield	2	Hanson	7	Milford	10
Chicopee	11	Hardwick	4	Millbury	7

Public Library Share of the FY2009 Massachusetts Municipal Pie

Municipality	Page	Municipality	Page	Municipality	Page
Millis	5	Richmond	3	Warren	6
Millville	4	Rochester	6	Warwick	3
Milton	10	Rockland	9	Washington	3
Monroe	2	Rockport	6	Watertown	10
Monson	5	Rowe	3	Wayland	8
Montague	6	Rowley	6	Webster	9
Monterey	2	Royalston	3	Wellesley	10
Montgomery	2	Russell	3	Wellfleet	4
Mount Washington	2	Rutland	6	Wendell	3
Nahant	4	Salem	10	Wenham	4
Nantucket	7	Salisbury	6	West Boylston	6
Natick	10	Sandisfield	3	West Bridgewater	6
Needham	10	Sandwich	9	West Brookfield	4
New Ashford	2	Saugus	10	West Newbury	4
New Bedford	11	Savoy	3	West Springfield	10
New Braintree	2	Scituate	9	West Stockbridge	3
New Marlborough	2	Seekonk	7	West Tisbury	4
New Salem	2	Sharon	9	Westborough	9
Newbury	6	Sheffield	4	Westfield	10
Newburyport	9	Shelburne	4	Westford	9
Newton	11	Sherborn	4	Westhampton	3
Norfolk	7	Shirley	6	Westminster	6
North Adams	7	Shrewsbury	10	Weston	8
North Andover	10	Shutesbury	3	Westport	9
North Attleborough	10	Somerset	9	Westwood	8
North Brookfield	6	Somerville	11	Weymouth	11
North Reading	7	South Hadley	9	Whately	3
Northampton	10	Southampton	6	Whitman	8
Northborough	7	Southborough	6	Wilbraham	8
Northbridge	7	Southbridge	9	Williamsburg	4
Northfield	4	Southwick	6	Williamstown	6
Norton	9	Spencer	7	Wilmington	9
Norwell	7	Springfield	12	Winchendon	8
Norwood	10	Sterling	6	Winchester	9
Oak Bluffs	4	Stockbridge	4	Windsor	3
Oakham	2	Stoneham	9	Winthrop	9
Orange	6	Stoughton	10	Woburn	10
Orleans	6	Stow	6	Worcester	12
Otis	2	Sturbridge	6	Worthington	3
Oxford	7	Sudbury	9	Wrentham	8
Palmer	7	Sunderland	4	Yarmouth	9
Paxton	4	Sutton	6		
Peabody	11	Swampscott	7		
Pelham	2	Swansea	9		
Pembroke	9	Taunton	11		
Pepperell	7	Templeton	6		
Peru	3	Tewksbury	10		
Petersham	3	Tisbury	4		
Phillipston	3	Tolland	3		
Pittsfield	10	Topsfield	6		
Plainfield	3	Townsend	6		
Plainville	6	Truro	4		
Plymouth	11	Tyngsborough	7		
Plympton	4	Tyringham	3		
Princeton	4	Upton	6		
Provincetown	4	Uxbridge	7		
Quincy	11	Wakefield	10		
Randolph	10	Wales	3		
Raynham	7	Walpole	9		
Reading	9	Waltham	11		
Rehoboth	7	Ware	6		
Revere	11	Wareham	9		