



MASSGAMING.COM | [About](#) | [News](#) | [Blog](#) | [Licensing](#) | [Regulations & Compliance](#)

MGC Newsletter - August 2017

Greetings and happy summer from the Massachusetts Gaming Commission! Thank you for staying updated on MGC's work to advance the goals of the Expanded Gaming Act.

MGC is committed to workforce development, celebrating the grand opening of the state's first certified gaming school and a new partnership encouraging women to seek employment in the building trades.

In keeping with our goal of mitigating problem gambling, MGC marked Responsible Gaming Education Week from July 31 through August 4 at Plainridge Park Casino.

Finally, MGC continues to work with resort-casino licensees MGM Springfield and Wynn Boston Harbor to ensure that all Massachusetts residents benefit from construction opportunities.

VIDEO: Commissioner Bruce Stebbins delivers remarks at the opening of Bristol Community College's CATCH Institute at BCC Taunton

On Friday, August 11th, MGC Commissioner Bruce Stebbins attended the grand opening of Bristol Community College's [CATCH Institute at BCC Taunton](#). The recent recipient of the state's first gaming school certification, Bristol Community College is launching a Casino Management program to prepare students for employment at a casino as part of an overall hospitality program that can prepare students for a variety of positions in a gaming establishment.



MGC awards grant to support an innovative recruitment and outreach strategy aimed at increasing diversity in the building trades

MGC has awarded more than \$150,000 in grant funding to launch a new partnership that will carry out a comprehensive recruitment strategy to encourage more women to pursue a career in the building trades. In addition to the creation of a pipeline navigator, this initiative will include the development and implementation of a comprehensive communication campaign to increase awareness and support the program's overarching goal of 20% tradeswomen by 2020.

[READ ABOUT THE PARTNERSHIP](#)



Save the Date: September 5 Northeast Center for Tradeswomen's Equity Open House!

As part of its overall commitment to maximizing opportunities for a diverse workforce, the Massachusetts Gaming Commission is supporting the Northeast Center for Tradeswomen's Equity (NCTE), a first-of-its-kind, statewide program that will implement a focused effort to increase the number of women in the union building trades.

On Tuesday, September 5 from 5:00pm to 7:00pm, NCTE will hold an open house where women interested in a career in construction can meet working

tradeswomen and find out about opportunities in the industry.

[MORE INFORMATION ON FACEBOOK](#)

VIDEO: Responsible Gaming Education Week at Plainridge Park Casino

The Massachusetts Gaming Commission marked Responsible Gaming Education Week 2017, from September 31 - August 4, 2017. RGEW outreach took the form of giveaways and patron education at the GameSense Info Center at Plainridge Park Casino, as well as targeted educational messages through a social media campaign driving customers to GameSenseMA.com. View a Facebook photo album of RGEW photos [here](#).



MGM Springfield submits quarterly report

At an open meeting on August 10, 2017, representatives of MGM Springfield presented their Q2 2017 quarterly report to the Massachusetts Gaming Commission.

MGM Springfield reported the following participation statistics (as of June 30, 2017):

DESIGN & CONSULTING COMMITMENTS

- 16.5% to women-owned business enterprises
- 12.7% to minority-owned business enterprises
- 7.1% to veteran-owned business enterprises

CONSTRUCTION COMMITMENTS

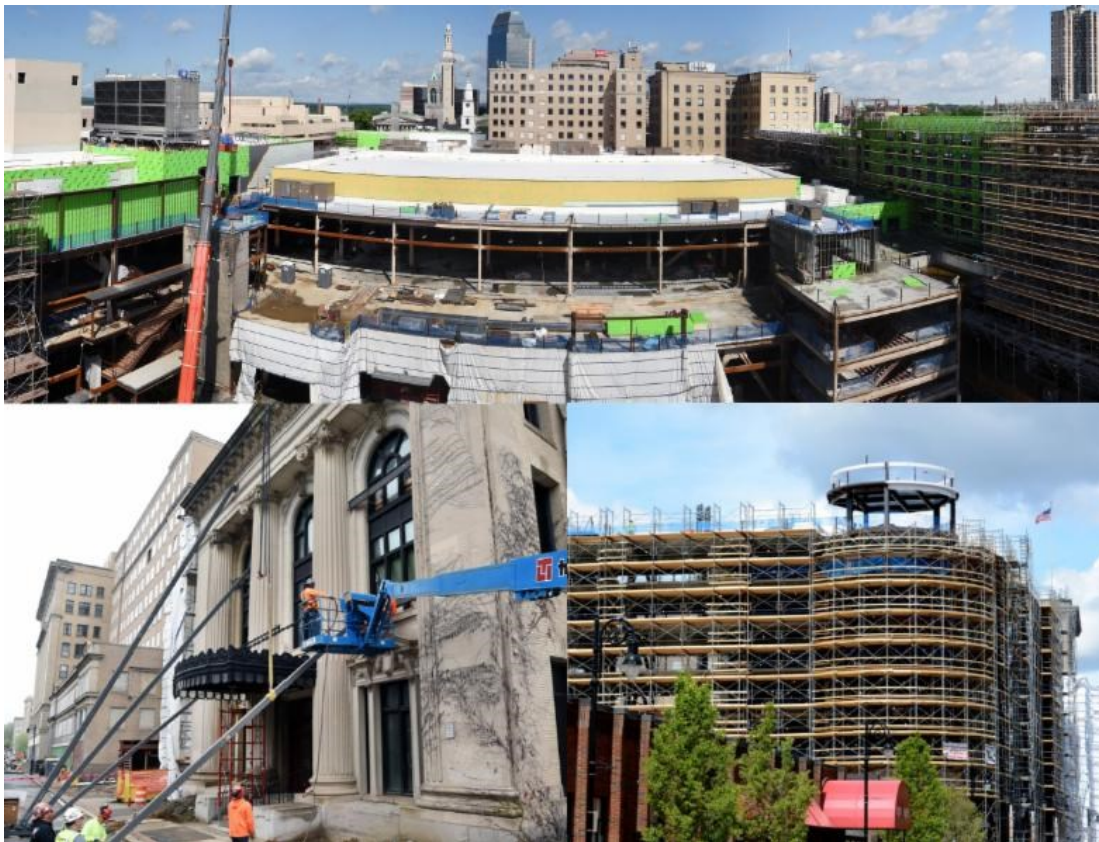
- 19.9% to women-owned business enterprises

- 8.4% to minority-owned business enterprises
- 7.7% to veteran-owned business enterprises

WORKFORCE HOURS

- 9.8% to women
- 23.5% to minorities
- 10.2% to veterans

[VIEW THE QUARTERLY REPORT](#)



Wynn Boston Harbor submits quarterly report

At an open meeting on August 10, 2017, representatives of Wynn Boston Harbor presented their Q2 2017 quarterly report to the Massachusetts Gaming Commission.

Wynn Boston Harbor reported the following participation statistics (as of June 30, 2017):

DESIGN & CONSULTING COMMITMENTS

- 5.2% to women-owned business enterprises
- 8.7% to minority-owned business enterprises
- 7.1% to veteran-owned business enterprises

CONSTRUCTION COMMITMENTS

- 9.8% to women-owned business enterprises
- 4.8% to minority-owned business enterprises
- 2.6% to veteran-owned business enterprises

WORKFORCE HOURS

- 7.1% to women
- 26.1% to minorities
- 6.9% to veterans

[VIEW THE QUARTERLY REPORT](#)



Revenue Report

MGC reported that the month of July 2017 at Plainridge Park Casino generated \$15,442,096.08 in Gross Gaming Revenue (GGR). The category 2 slots-parlor is taxed on 49% of gross gaming revenue, of that total taxed amount 82% is paid to Local Aid and 18% goes to the Race Horse Development Fund. To date, the state has collected \$166,480,950.94 in total state taxes and race horse assessments from Plainridge Park Casino since its June 24, 2015 opening.

[READ MORE](#)

MGC in the News

Sun Chronicle: [Plainville's Plainridge Park had booming month in July](#)

New Bedford Standard-Times: [BCC 'Casino lab', first of its kind in Massachusetts, officially opens in Taunton](#)

Taunton Gazette: [Game on: BCC casino lab ready to roll in Taunton](#)

Boston Globe: [Wynn's Somerville pedestrian bridge study on its way](#)

Sun Chronicle: [Plainville breaks ground for new buildings](#)

22News: [MGM Springfield to begin hiring process](#)

MassLive: [MGM Springfield vendor fair draws more than 100 companies from across New England](#)

The mission of the Massachusetts Gaming Commission is to create a fair, transparent, and participatory process for implementing the expanded gaming law passed by the Legislature and signed by the Governor in November, 2011.



Massachusetts Gaming Commission | mgccomments@state.ma.us | MASSGAMING.COM

Massachusetts Gaming Commission, 101 Federal Street, 12th Floor, Boston, MA 02110