



GREEN LINE EXTENSION PROJECT



massDOT
Massachusetts Department of Transportation



23-JAN-17
MBTA Fiscal & Management Control Board

GLX Status Summary

Key Program Updates

- Schedule
- Progress Update
- FTA Process
- Budget
- Procurement Actions
 - Current
 - Forthcoming

Project Schedule Highlights

DRAFT

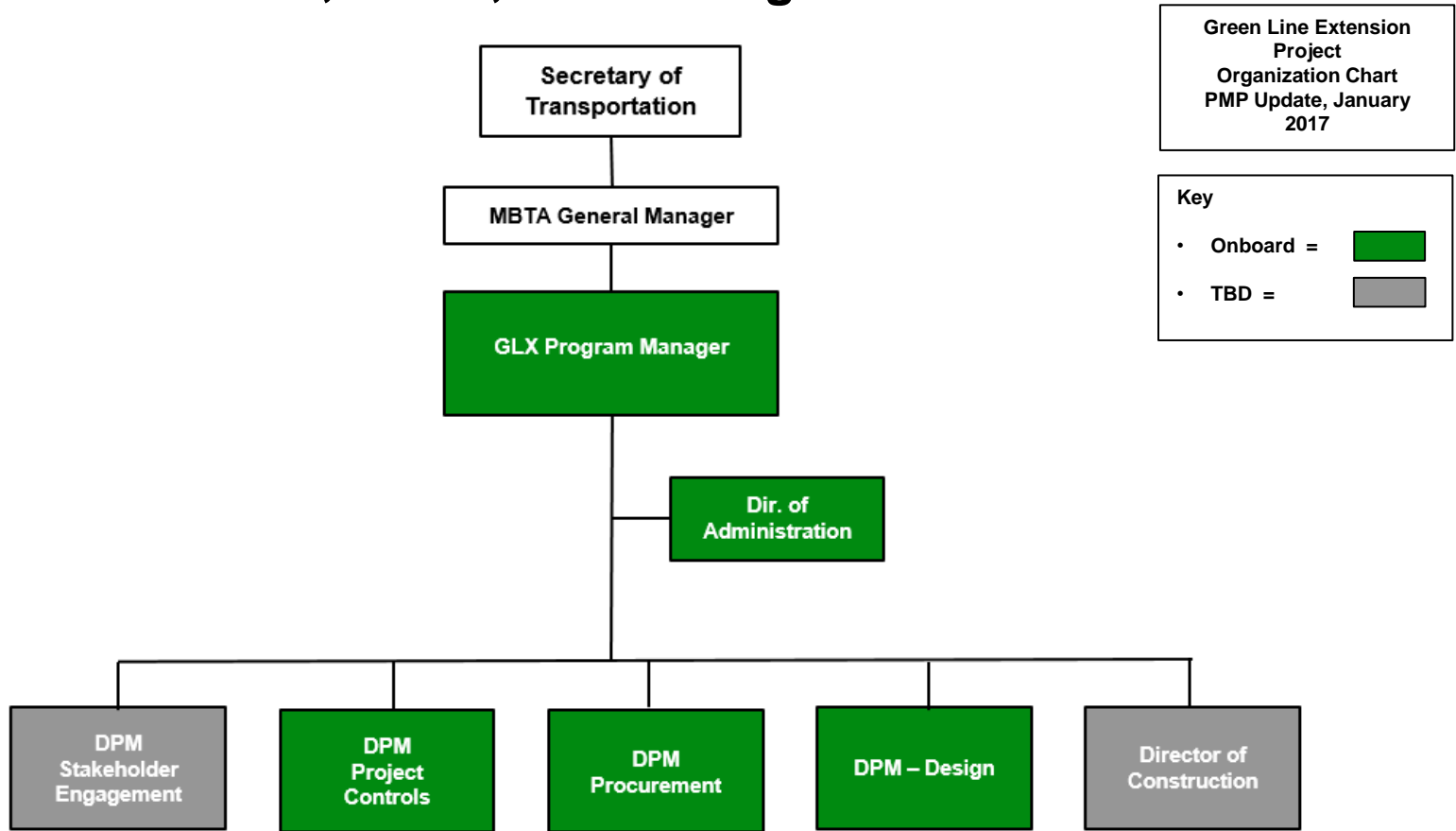
1. Pre-Procurement Forum 11/16/16 (Actual)
2. Issue Request for Qualifications for Design Build (DB) Teams 12/15/16 (Actual)
3. FTA Risk Refresh 1/25/17 – 1/26/17
4. Receive Statement of Qualifications for BD 1/26/17
5. File MEPA/NEPA Documents January
6. Issue Shortlist for DB Teams 2/25/17
7. Issue Draft Request for Proposals for DB Shortlist 3/14/17
8. Submit Finance Plan Update to FTA 3/17/17
9. Hold One-on-Ones 3/28/17 – 4/20/17
10. Award Contact for Project Manager/Construction Manager April 2017
11. Issue Final Request for Proposals 5/23/17
12. Alternative Technical Concept (ATC) Process 6/8/17 – 8/9/17
13. Design Build Proposals Due 9/30/17
14. Bid Opening/Select Design Build Entity 11/28/17

Progress Update

- Finalizing Request for Proposals for both Design Build prime contract and the professional service contracts (Design Professional and PMCM Team)
- Recruiting and hiring for key GLX Management Positions
- Closing out of existing CM/GC contracts
- Coordinating with internal and external stakeholders
 - Elected Officials
 - FTA
 - Keolis
 - MEPA/NEPA Environmental documents to be submitted before the end of January

GLX Organization Structure

MassDOT, MBTA, GLX Management Team



FTA Update

Risk Refresh (1/25 – 1/26)

- Review of Key Risks and Risk Mitigations
- Permanent GLX Program Management on-board
- Program Management Plan (PMP)
- The Risk Assessment is the remaining step before finalizing GLX finance plan



Professional Services Budget Update

\$15M Contract appropriation (9/1/16 – 3/31/17)

83% Committed

- Preparation of selection manual, drawings, schedule, and specifications for DB procurement
- Assist with Finance Plan
- Advance Real Estate acquisition activities
- Support in drafting of the Project Management Plan



GLX Procurement Actions

- Keolis (Early Works Initiative) – initial only
- Professional Services in support of GLX Management
- Design Professional

GLX Procurement Look Ahead

- Assignment of contracts from prior CMGC contracts
 - Procured Materials
 - Office Lease (200 Inner Belt)
- Keolis Early Works (full amount)
- Environmental Remediation (21 Water Street)
- Program Management Information System (PMIS)
- Program Management/Construction Management (PMCM)



GREEN LINE EXTENSION PROJECT



massDOT
Massachusetts Department of Transportation

