

Anna Jaques Hospital is a mid-size, non-profit community hospital located in the Northeastern Massachusetts region. It has been clinically affiliated with Beth Israel Deaconess Medical Center since 2010. From FY12 to FY16, inpatient discharges decreased 8.4% at the hospital, compared to a median decrease of 3.7% in its peer cohort. Anna Jaques was profitable each of the five years between FY12 and FY16, with a 0.7% total margin in FY16. Its operating and total margins were equal to or below the median of its peer cohort each year.

**Overview / Size**

Hospital System Affiliation:	Not Applicable
Change in Ownership (FY12-16):	Not Applicable
Total Staffed Beds:	140, mid-size acute hospital
% Occupancy:	55.2%, < cohort avg. (61%)
Special Public Funding:	CHART^
Trauma Center Designation:	Adult: Level 3
Case Mix Index:	0.78, < cohort avg. (0.84); < statewide (1.07)

**Financial**

Inpatient NPSR per CMAD:	\$8,175
Change FY15-FY16:	0.6%
Inpatient:Outpatient Revenue in FY16:	28%:72%
Outpatient Revenue in FY16:	\$74,806,569
Change FY15-FY16:	11.2%
Total Revenue in FY16:	\$123,828,278
Total Surplus (Loss) in FY16:	\$817,092

**Payer Mix**

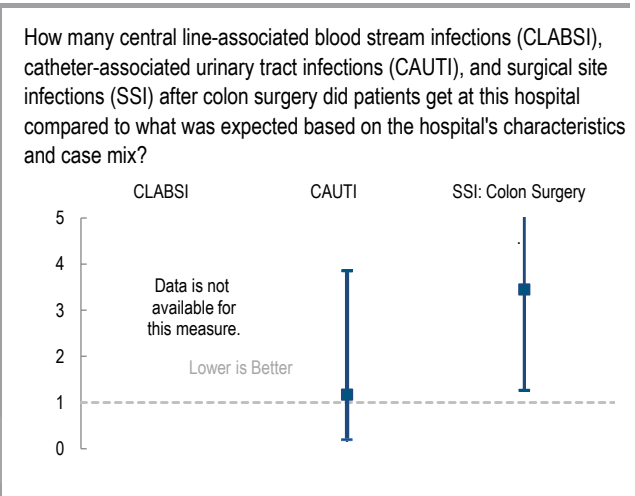
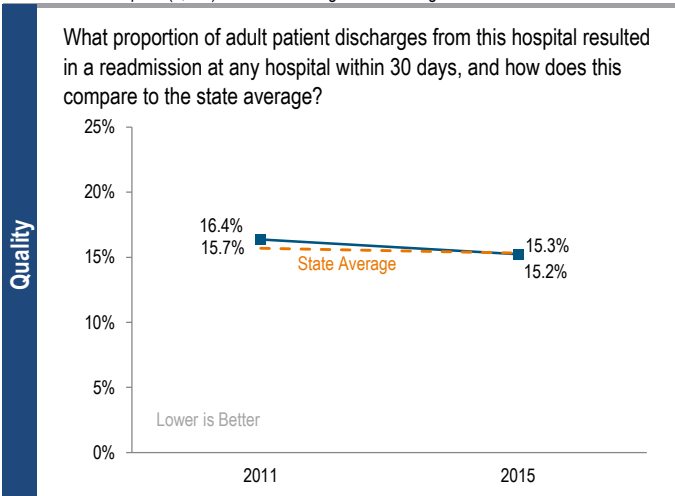
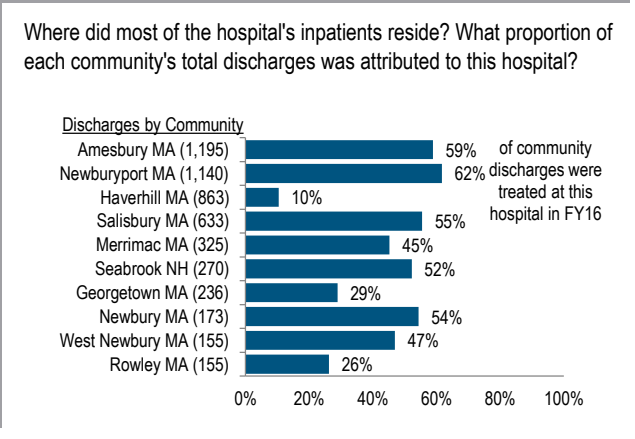
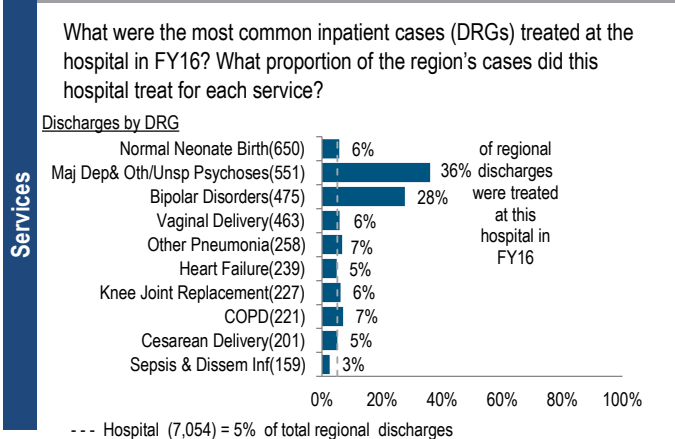
Public Payer Mix:	58.5% (Non-HPP* Hospital)
CY15 Commercial S-RP:	0.76
Top 3 Commercial Payers:	Blue Cross Blue Shield of MA Harvard Pilgrim Health Care Tufts Health Plan

**Utilization**

Inpatient Discharges in FY16:	7,054
Change FY15-FY16:	-3.2%
Emergency Department Visits in FY16:	30,560
Change FY15-FY16:	-0.5%
Outpatient Visits in FY16:	68,675
Change FY15-FY16:	19.8%

**Quality**

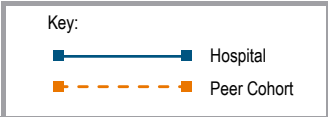
Readmission Rate in FY15:	15.2%
Change FY11-FY15 (percentage points):	-1.1%
Early Elective Deliveries Rate (Jan 2015-Jun 2016):	Not Available



For descriptions of the metrics, please see the technical appendix.

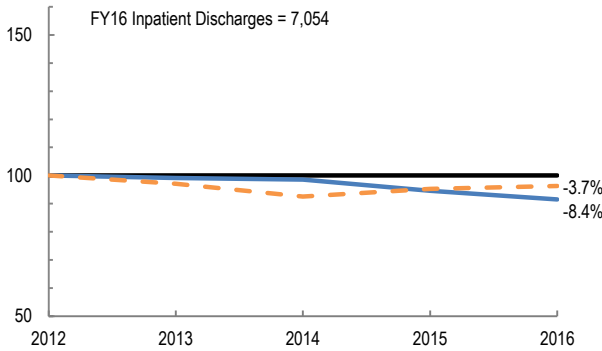
# 2016 HOSPITAL PROFILE: ANNA JQUES HOSPITAL

Cohort: Community Hospital

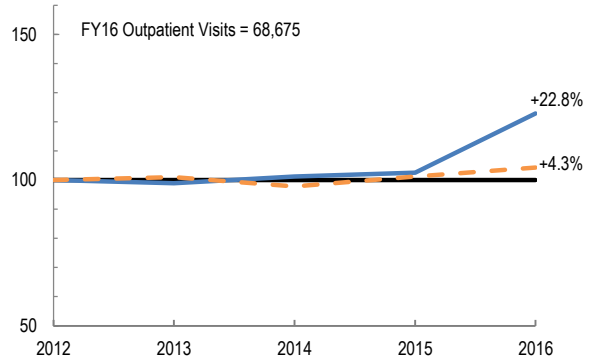


## Utilization

How has the volume of the hospital's inpatient discharges changed compared to FY12, and how does this compare to the hospital's peer cohort median? (FY12=100)

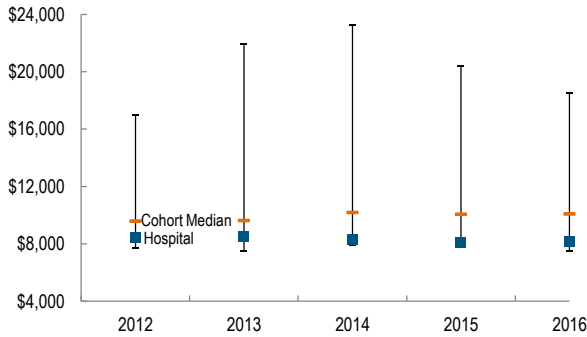


How has the volume of the hospital's outpatient visits changed compared to FY12, and how does this compare to the hospital's peer cohort median? (FY12=100)

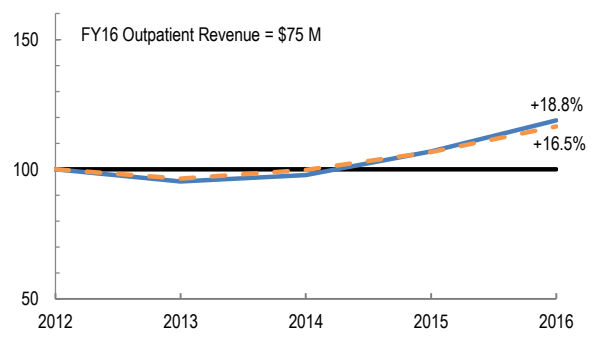


## Patient Revenue Trends

What was the hospital's net inpatient service revenue per case mix adjusted discharge between FY12 and FY16, and how does this compare to the hospital's peer cohort median?



How has the hospital's total outpatient revenue changed compared to FY12, and how does this compare to the hospital's peer cohort median? (FY12=100)



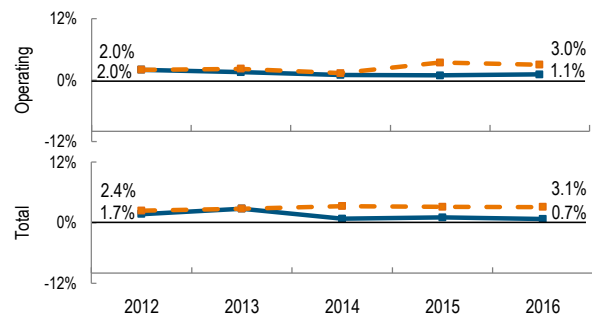
## Financial Performance

How have the hospital's total revenue and costs changed between FY12 and FY16?

### Revenue, Cost, & Profit/Loss (in millions)

FY	2012	2013	2014	2015	2016
<b>Operating Revenue</b>	\$ 115	\$ 112	\$ 113	\$ 116	\$ 124
<b>Non-Operating Revenue</b>	\$ (0)	\$ 1	\$ (0)	\$ 0	\$ (0)
<b>Total Revenue</b>	\$ 115	\$ 114	\$ 113	\$ 116	\$ 124
<b>Total Costs</b>	\$ 113	\$ 111	\$ 112	\$ 115	\$ 123
<b>Total Profit (Loss)</b>	\$ 2.0	\$ 3.2	\$ 0.9	\$ 1.2	\$ 0.8

What were the hospital's total margin and operating margins between FY12 and FY16, and how do these compare to the hospital's peer cohort medians?



For descriptions of the metrics, please see the technical appendix.

\* High Public Payer Hospitals (HPP) receive a minimum of 63% of gross patient service revenue from public payers.

^ For more information on Community Hospital Acceleration, Revitalization and Transformation (CHART) special funding, please contact the Health Policy Commission (HPC).