

Fiscal Year 2019 - HIGHLIGHTS

INDIVIDUALS SERVED BY DMH

The DMH serves individuals within the Commonwealth with the most significant and persistent mental illness.

Approximately **29,000** individuals (**25,861** adults)

6,741 individuals received case management.

GENDER

Male **56%**
Female **44%**

RACE

White Non Hispanic 54%	White Hispanic 7%	Other 4%
Black Non Hispanic 13%	Black Hispanic 1%	Unknown 17%
Asian 2%	Two or more races 1%	
Native American <1%	Pacific Islander <1%	

SERVICES which individuals served may be eligible to receive.

SERVICES FOR ADULTS

- Adult Community Clinical Services (ACCS)
- Clubhouses
- Homeless Support Services
- Program of Assertive Community Treatment (PACT)
- Recovery Learning Communities (RLCs)
- Respite Services

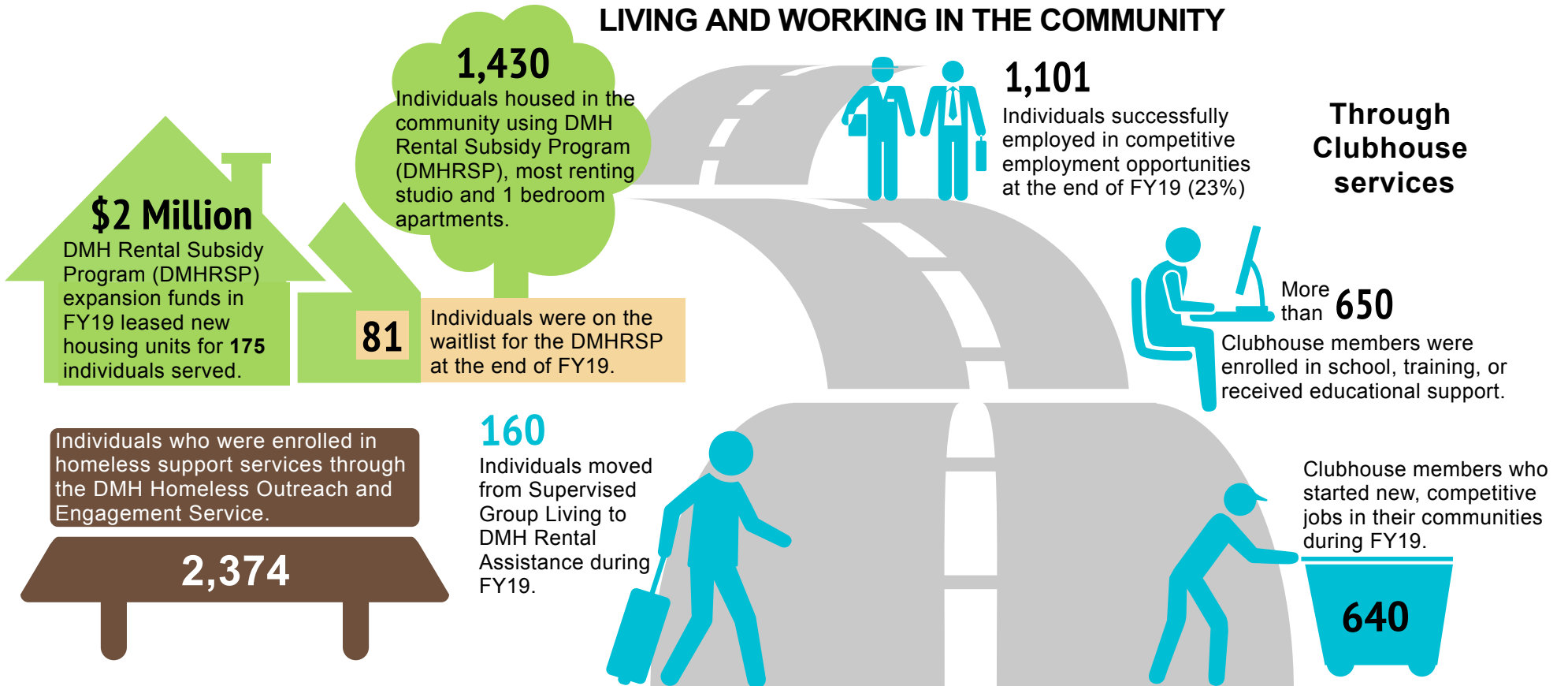
SERVICES FOR CHILDREN AND ADOLESCENTS

- Intensive Community Treatment & Residential Supports
- Day/Therapeutic After-School Programs
- Individual and Family Flexible Supports
- Psychiatric Intensive Residential Treatment Programs
- First Episode Psychosis Programs

SERVICES FOR ALL AGES

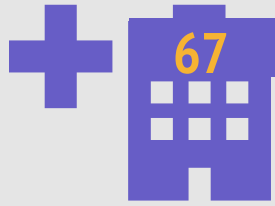
- DMH Case Management
- Forensic Services
- Inpatient/ Continuing Care System

LIVING AND WORKING IN THE COMMUNITY





AS THE STATE MENTAL HEALTH AUTHORITY



Acute Psychiatric Inpatient Units were licensed by DMH in FY19, with a capacity of **2,883** beds.



Individuals were referred to DMH by the Juvenile, District, and Superior Courts in FY19.



Jail Diversion Programs (JDP) grants were awarded to police departments (55), and partner organizations in FY19.



Communities were served by JDP entities in FY19.

ABOUT DMH

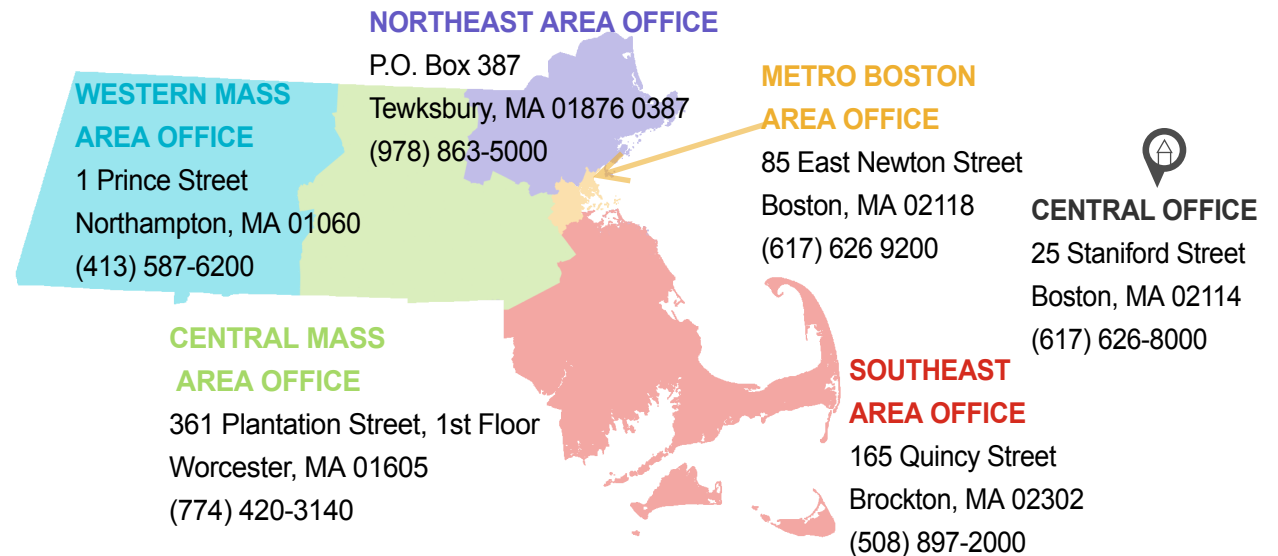
Vision

Mental health is an essential part of health care. The Massachusetts Department of Mental Health (DMH), as the State Mental Health Authority, promotes mental health through early intervention, treatment, education, policy and regulation so that all residents of the Commonwealth may live full and productive lives.

Mission

DMH as the State Mental Health Authority, assures and provides access to services and supports to meet the mental health needs of individuals of all ages, enabling them to live, work and participate in their communities. The Department establishes standards to ensure effective and culturally competent care to promote recovery, sets policy, promotes self-determination, protects human rights and supports mental health training and research. This critical mission is accomplished by working in partnership with other state agencies, individuals, families, providers and communities.

5 GEOGRAPHIC AREAS



FY19 BUDGET

