



MASSWILDLIFE

Tracking the condition of MA's large rivers

Rebecca M. Quiñones, Ph.D.
Rebecca.Quinones@mass.gov

Steven Mattocks
Steven.Mattocks@mass.gov

Water Resources Commission December 10, 2020

MassWildlife

- Mission:

The conservation – including restoration, protection, and management – of fish and wildlife resources for the benefit and enjoyment of the public



Outline

- Large rivers
- Evaluations of large rivers
 - Applications
 - Methods
 - Comparison of results
- Next steps



Examples of applications

MA DEP

Aquatic life use determination

- if >50% similarity score then river is “supporting aquatic life use”
- if similarity score <50% then river is considered impaired

MassWildlife

Develop potential restoration projects

- e.g., water quality vs. habitat alteration
- regulatory recommendations





MA Major Basins

Large rivers = major basins

Methods

- Target Fish Community

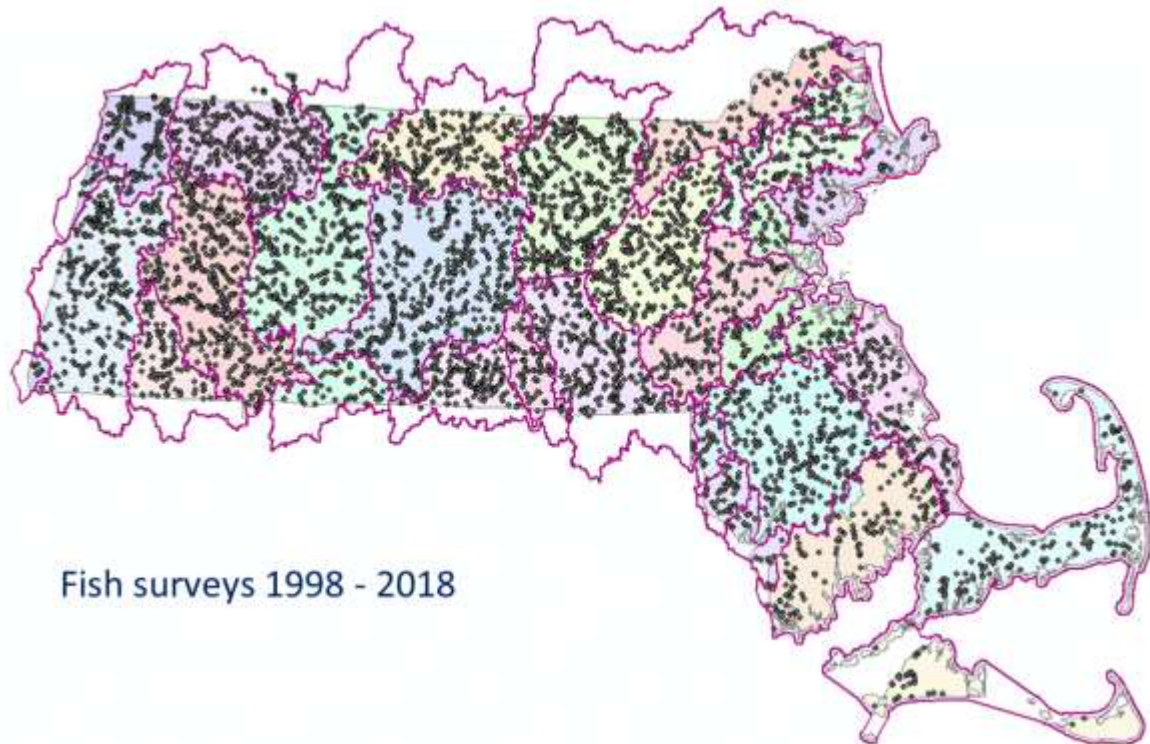
- Reference streams
- Species composition
- Rank order
- Expected species proportions=

Target Fish Community

- % Similarity =

$$100 - 0.5(\sum | \text{target } P - \text{observed } P |)$$





Habitat Condition

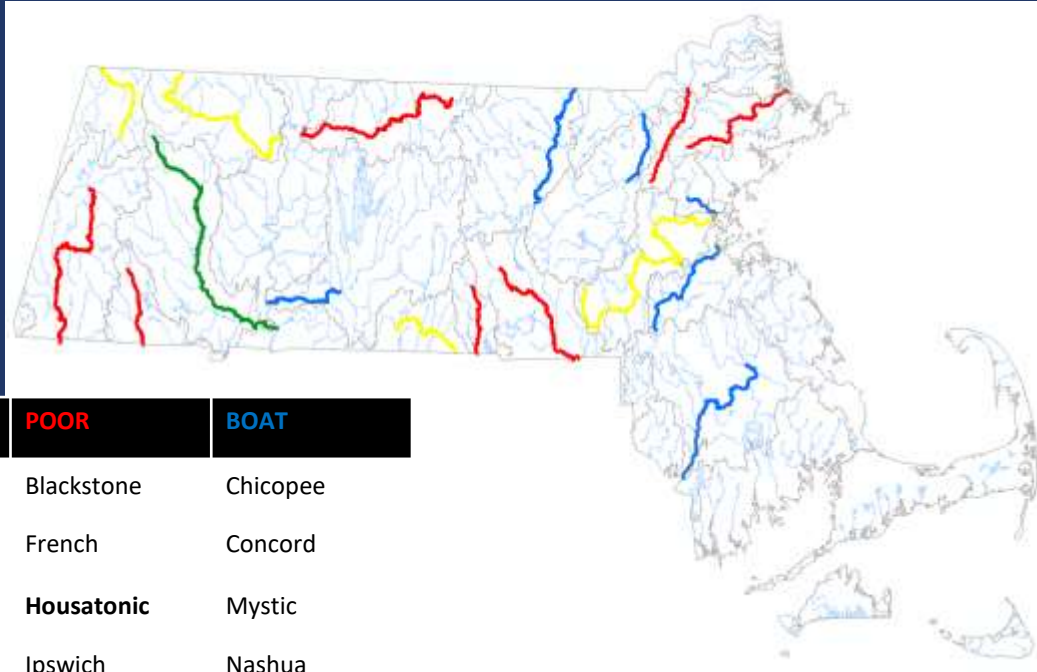


Similarity score $> 75\%$ = **GOOD**



Similarity score $50-75\%$ = **FAIR**

Similarity score $< 50\%$ = **POOR**

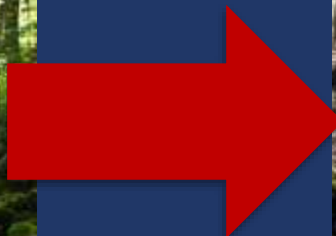


GOOD	FAIR	POOR	BOAT
Westfield	Charles	Blackstone	Chicopee
	Deerfield	French	Concord
	Farmington	Housatonic	Mystic
	Hoosic	Ipswich	Nashua
	Quinebaug	Millers	Neponset
		Shawsheen	Taunton

Changes in water quality



Habitat degradation



% species -> % guilds

Pollution Tolerances

- Intolerant



- Moderately Tolerant



- Tolerant



Habitat Requirements

- Fluvial specialist



- Fluvial dependent

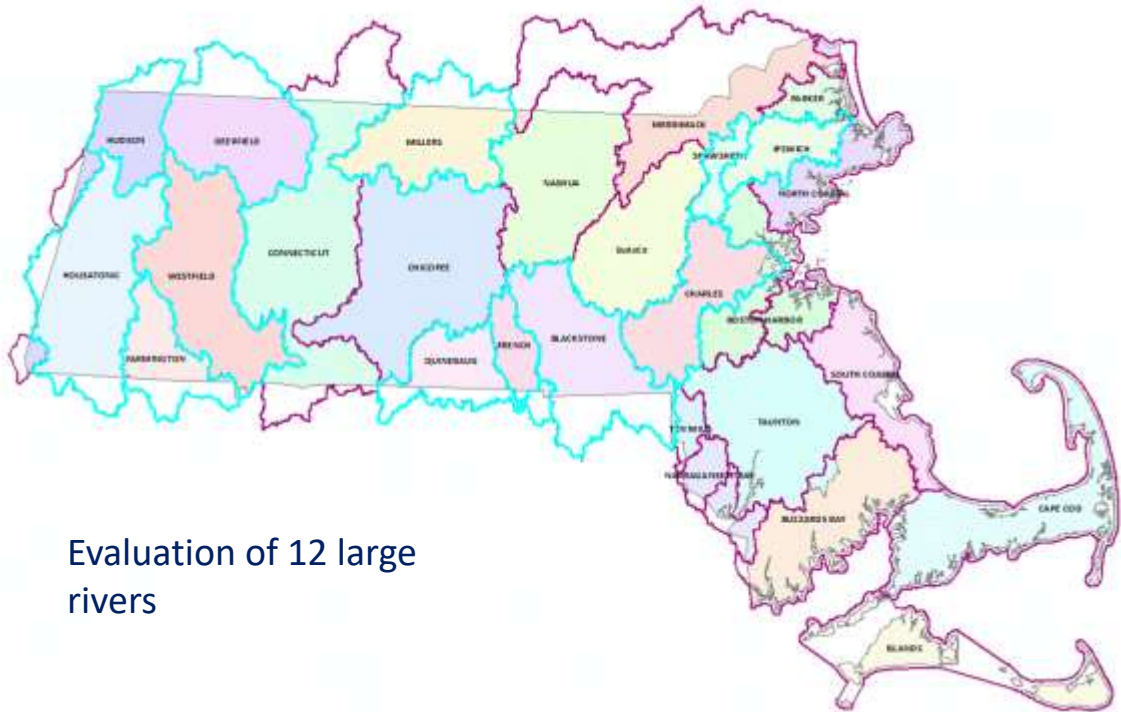


- Macrohabitat generalists



Additional analysis

- Two time periods
- NMDS to visualize
- PERMANOVA to test for significance
- Pairwise comparisons to test for differences among groups



Evaluation of 12 large rivers

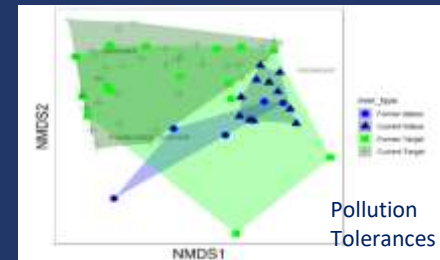
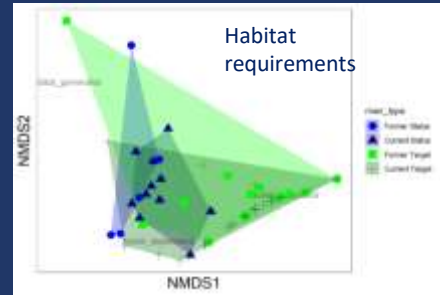
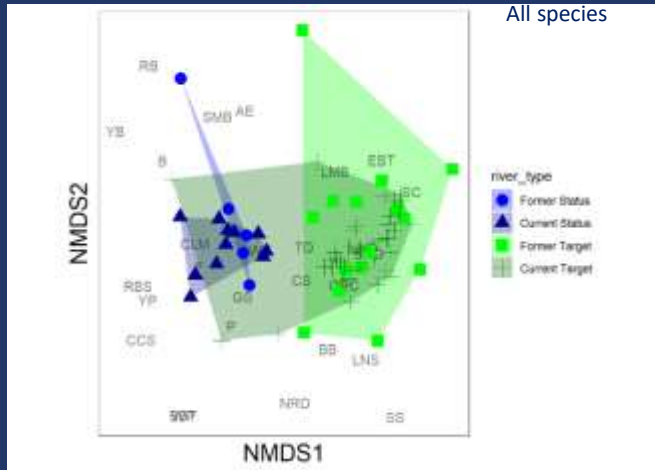
WB Farmington River (Fair)

Blue polygons = investigated river

Green polygons = Target Fish Community

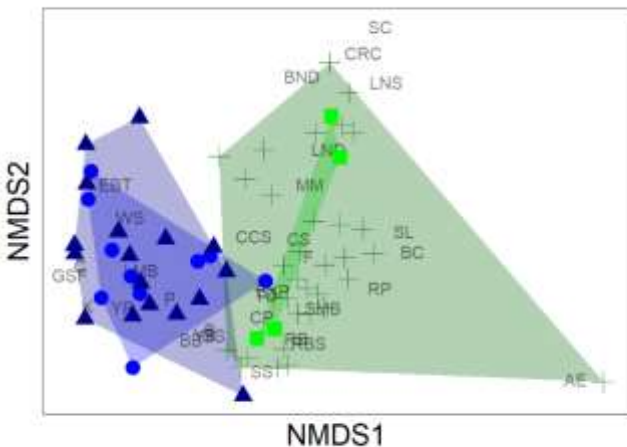
Former = 1998-2005

Current = 2006-2018



Rivers in Poor Condition

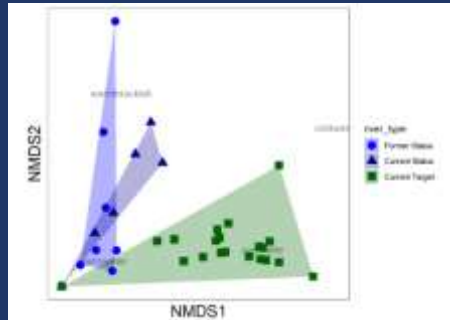
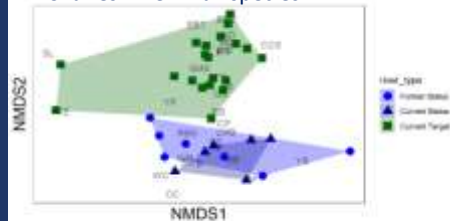
Blackstone River – all species



river_type

- Former Status
- Current Status
- Former Target
- Current Target

Charles River – all species



Next steps

- Understanding drivers of significant findings (GLzMs)
 - Δ Precipitation
 - \uparrow Temperature
 - Land use
 - Water management
 - Barriers
- TFC's/similarity analysis for rivers with boat surveys

Questions?

