

**Massachusetts Department of Correction**  
 Luis S. Spencer, Commissioner

**Current Parole Admission and Release Trends at the Massachusetts Department of Correction**

Rhiana Kohl, Ph.D., Executive Director, Office of Strategic Planning and Research

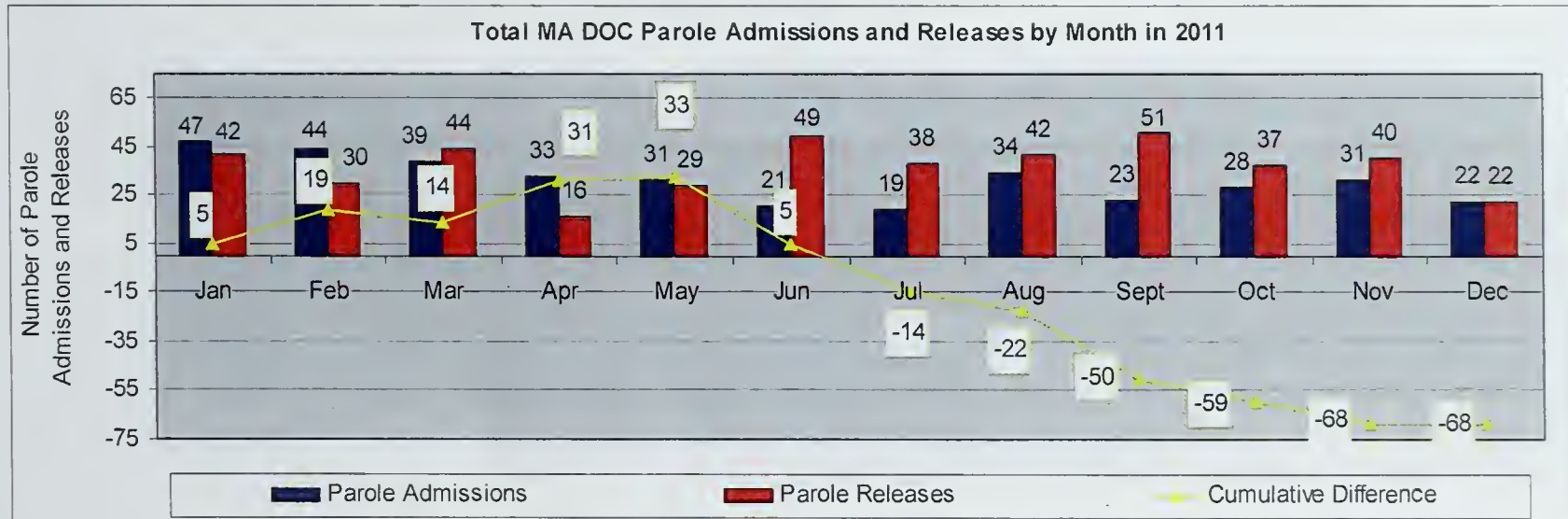
Prepared by:

Karyn Rautenberg, M.S. Research Analyst II, Research & Planning Division

January 2012

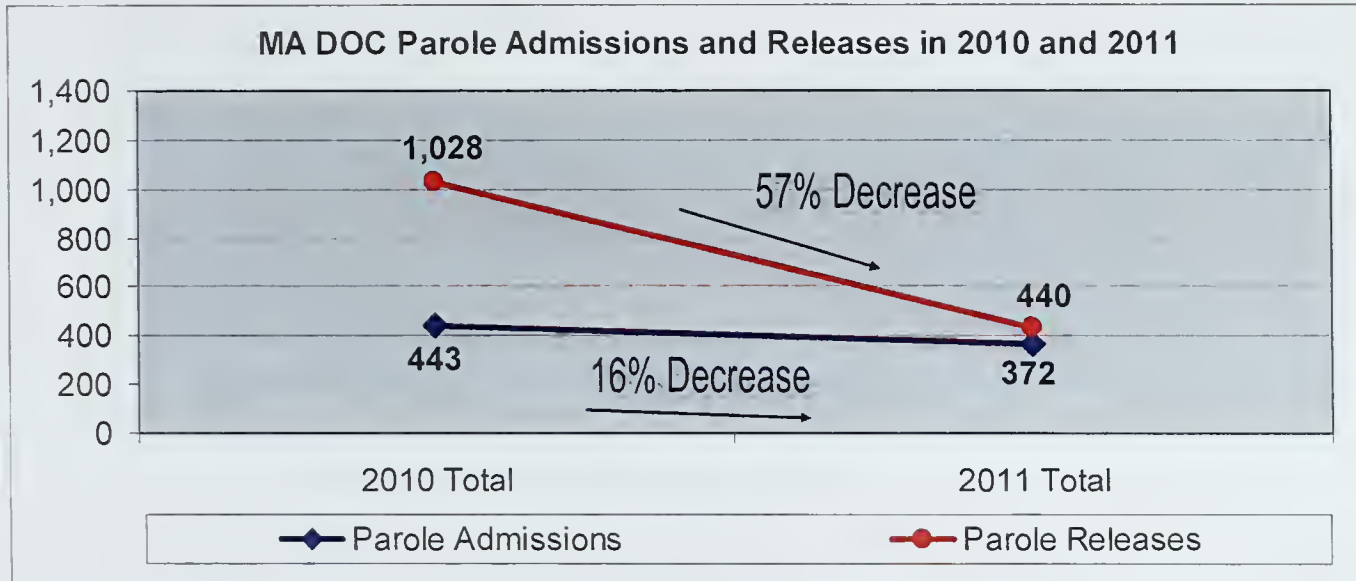
**Overview of Parole Admissions and Releases in 2011<sup>1</sup>**

- Parole releases outnumbered parole admissions from June through November but were equal in December, ending in a *cumulative difference of 68 inmates* over the course of 2011
- Monthly parole admissions declined slowly between January and July from 47 to 19 admissions before fluctuating over the last five months, August through December
- Monthly parole releases fluctuated between 16 and 50 releases throughout the year and outnumbered parole admissions in seven out of twelve months in 2011



<sup>1</sup> This report refers exclusively to criminally sentenced inmates. Parole Admissions include "In on a MA Parole Detainer" and "Parole Violator" admissions. Parole Releases include "Parole to Street" and "Release from a MA Parole Detainer". (There were ten Releases from a MA Parole Detainer in 2011.) Since this report focuses on parole releases to the street, parole releases to other jurisdictions, immigration, warrant, or "From & After" sentences are excluded (n=49). Data for this report is from the Inmate Management System for the Massachusetts Department of Correction (MA DOC) and current as of January 3, 2012. References for 2010 data are derived from the MA DOC Research & Planning Division's report entitled "Prison Population Trends 2010" (August 2011).

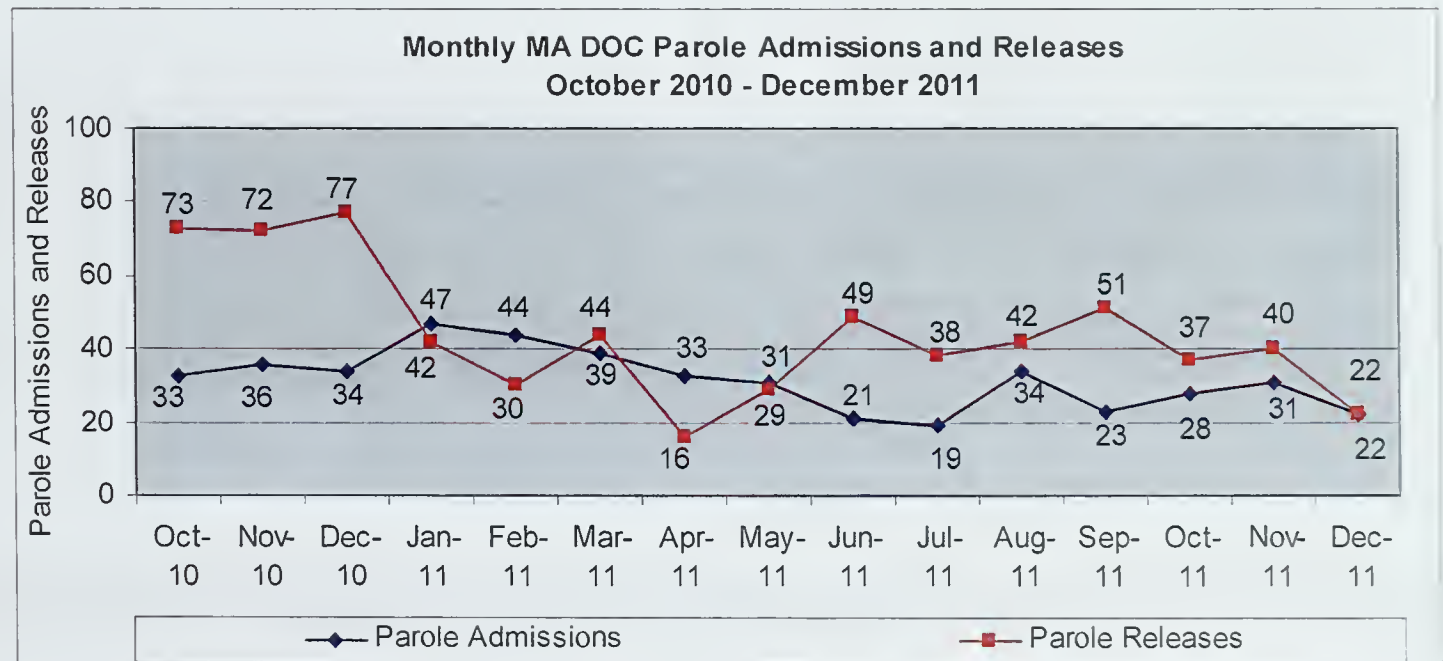
## Parole Admission and Release Trends<sup>2</sup>



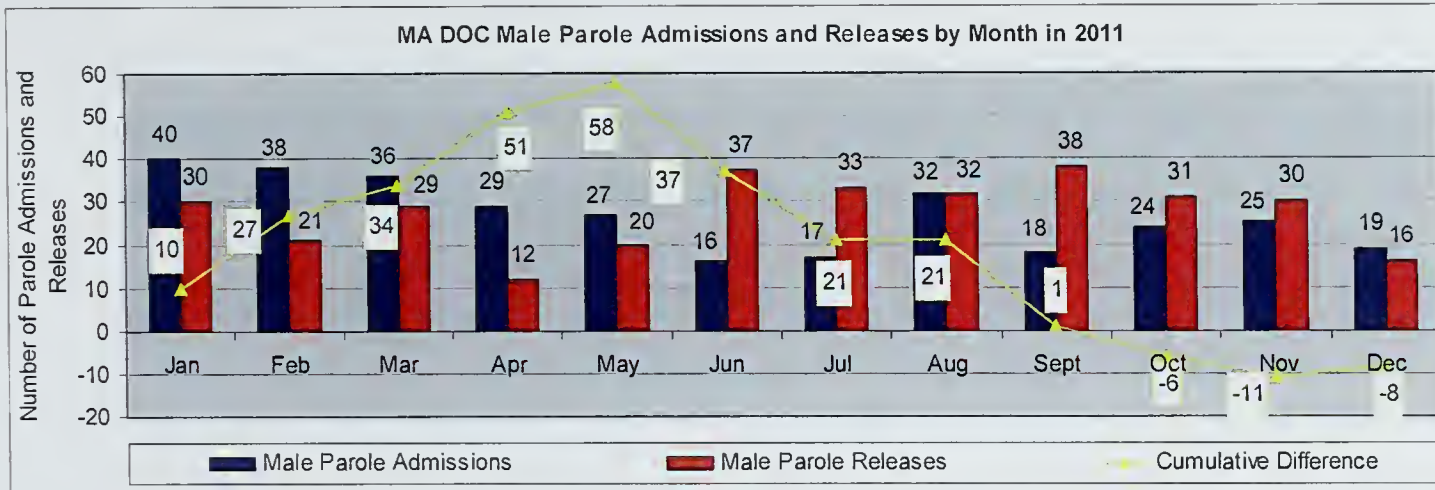
- In 2010, parole releases outnumbered admissions 1,028 to 443, resulting in a difference of 585 inmates over the calendar year
- In 2011, parole releases outnumbered parole admissions by 68 inmates

*2011 parole admissions are about 16 percent less than those in 2010 while 2011 parole releases were approximately 57 percent less than 2010 parole releases.*

- Parole admissions in 2011 totaled 372 with a monthly average of 31 compared to 36.9 monthly admissions in 2010
- Parole releases in 2011 totaled 440 with a monthly average of 36.7 compared to 85.7 monthly releases in 2010
- In December of 2011, parole admissions and releases were lower than the year's average, admissions were 29 percent lower while releases were 40 percent lower



<sup>2</sup>References for 2010 data are derived from the MA DOC Research & Planning Division's report entitled "Prison Population Trends 2010" (August 2011).

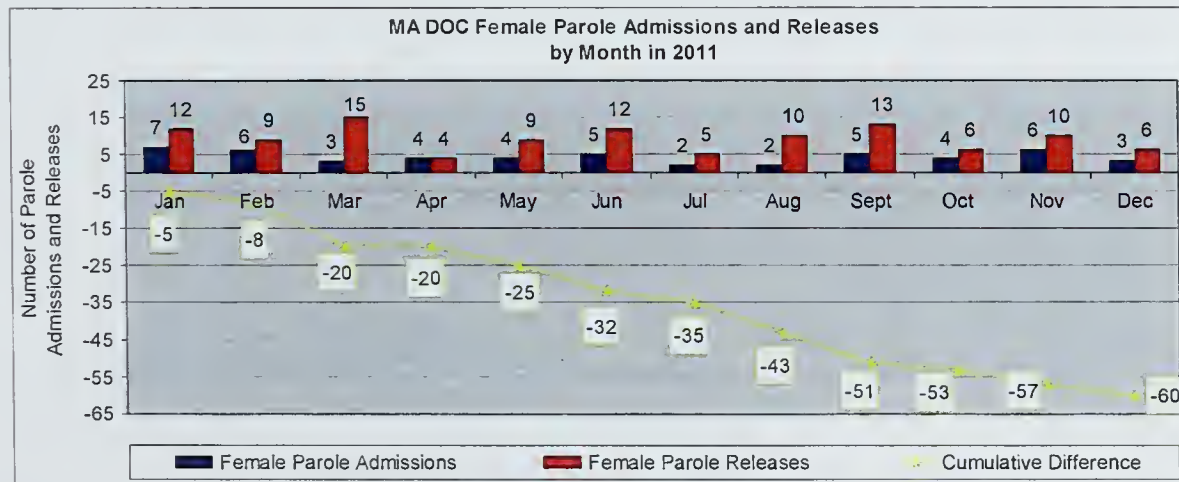


### Male Parole Admissions and Releases

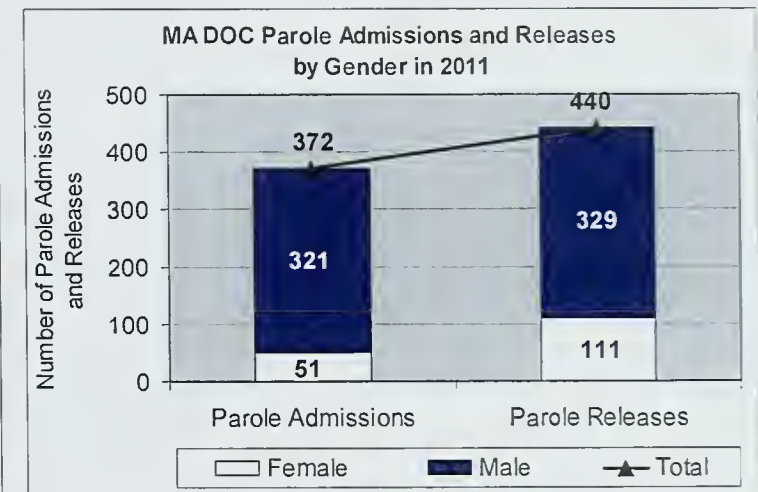
- Over the course of 2011 there were 321 male parole admissions and 329 male parole releases with monthly averages of 26.8 admissions and 27.4 releases
- For January through May, male parole admissions outnumbered parole releases and raised the *cumulative increase to 58 inmates* before the trend reversed and brought the *cumulative difference to eight inmates* in December

### Female Parole Admissions and Releases

- Female parole releases consistently outnumbered parole admissions over the trend period and resulted in a *cumulative difference of 60 inmates*
- Females averaged 4.3 parole admissions and 9.3 parole releases per month



### Parole Admissions and Releases by Gender



- Parole admissions were 86 percent male and 14 percent female
- Parole releases, however, were 75 percent male and 25 percent female

Any comments or questions can be addressed by the Research & Planning Division via email at [Research@doc.state.ma.us](mailto:Research@doc.state.ma.us).  
Copies of publications from the Office of Strategic Planning & Research can be found on [www.mass.gov/doc](http://www.mass.gov/doc).