

^{-24th}
FIRST ANNUAL REPORT

OF THE

MEDFIELD INSANE ASYLUM

AT

MEDFIELD, MASSACHUSETTS

(POST OFFICE, HARDING),

FOR THE

YEAR ENDING SEPTEMBER 30, 1896-1899

Mass.: Medfield state hospital (Insane)
Harding

BOSTON:

WRIGHT & POTTER PRINTING CO., STATE PRINTERS,
18 Post Office Square.

1897.

STATE LIBRARY OF MASS.

JAN 31 1971

STATE HOUSE BOSTON

Mass. Officials

MASSACHUSETTS
STATE LIBRARY
BOSTON

362.2M3

MMSr

1896-1919

B

OFFICERS OF THE ASYLUM.

TRUSTEES.

DR. J. G. PARK,	GROTON.
MR. IRA G. HERSEY,	HINGHAM.
MR. W. O. BLANEY,	BOSTON.
MR. B. S. ATWOOD,	WHITMAN.
COL. E. V. MITCHELL,	MEDFIELD.
MISS ELIZABETH THURBER,	PLYMOUTH.
MRS. DAVID HALL RICE,	BROOKLINE

RESIDENT OFFICERS.

EDWARD FRENCH, M.D.,	<i>Superintendent.</i>
CHARLES A. DREW, M.D.,	<i>Assistant Physician.</i>
THOMAS HOWELL, M.D.,	<i>Assistant Physician.</i>
J. B. CHAPIN,	<i>Steward.</i>
MARY R. SATTERTHWAITE,	<i>Matron.</i>
MISS SUE R. HAYNES,	<i>Book-keeper.</i>
WILLIAM PLUMMER,	<i>Farmer.</i>

NON-RESIDENT OFFICERS.

CHARLES C. BLANEY,	<i>Treasurer.</i>
ARTHUR E. READ,	<i>Engineer.</i>

Commonwealth of Massachusetts.

TRUSTEES' REPORT.

To His Honor the Lieutenant Governor, Acting Governor, and the Honorable Council.

The trustees of the Medfield Insane Asylum respectfully submit the following report.

The building committee of the trustees, elected under the provisions of chapter 425 of the Acts of 1892, reported to the trustees that a portion of the buildings, with accommodation for 600 patients and the necessary officers and employees, would be ready for occupancy on May 1. It was thought best, on account of the overcrowded condition of the other State hospitals and the urgent necessity of relieving them of their surplus population, to open at once the buildings which were finished, and not wait for the completion of the whole group of buildings which constitute the establishment. The State Board of Lunacy and Charity were accordingly notified, and during the months of May and June about 600 patients of the chronic and incurable class were transferred by this Board from the various hospitals for the insane.

The really great work of organizing and opening a large asylum has been carried on in a manner satisfactory to the trustees and creditable to the superintendent. This work was rendered more perplexing from the fact that the whole plan of administration was a new one in this State. The daily routine of the patients transferred was entirely different from that to which they had been accustomed, many of them for years, and they found it difficult easily to accommodate themselves to the change. In addition to this, building operations have been carried on through the year. This has been an important factor as a disturbing element, adding to the natural excitement of the patients incident to their removal to a new home. The friction and discomfort arising from these causes are, however,

becoming less every day. Twelve buildings are now occupied, and the building committee expect that the remaining six will be completed early next year, — three of them by the first of January. The establishment will then give accommodation to 1,000 patients, and with a little crowding to 1,200. The general plan of the asylum is described in detail in the appended report of the superintendent.

The trustees desire to call attention to the fact that the cottage plan adopted in the construction, with its eighteen separate buildings for patients, gives a much better opportunity for the classification of all forms of insanity than is afforded by any hospital in the State. It seems to them unfortunate that the institution should be by statute confined to the care of the chronic and incurable class of the insane who have become public charges, when it has such facilities for treating recent and curable cases. They therefore recommend that the matter of so amending the statute that the institution shall be placed upon the same basis as the other State hospitals be brought to the consideration of the Legislature.

The water supply, which was originally intended to be furnished from driven wells, has proved to be inadequate. A quantity sufficient for all purposes except drinking is obtained directly from Charles River. The question of a supply suitable in quality and quantity for all purposes is now under consideration by the building committee.

The statutes provide that the expenses of the institution shall not exceed \$2.80 per week for each patient. This sum, of course, can be sufficient only when the asylum has become well established, with at least two-thirds of its complement of inmates. This report covers the first five months since the asylum was opened, with the number of patients varying from 120 to 596, and the expenses for this period and for the month of March, during which the buildings were made ready for occupancy, has been \$3.21 per patient. This result is especially gratifying to the trustees, showing, as it does, careful economy on the part of the officials of the institution who have the immediate charge of its management. It should be stated that the expenses during the summer are always less than during the winter, when the item of fuel adds considerably to the expenditures. Just what the cost of fuel will be we are unable to state,

as our first winter is in the future. We hope, however, to have an increased number of patients, and by this means to keep the per capita expenses near the present amount.

It will be necessary, for at least another year, to ask of the Legislature an appropriation for current expenses in excess of our income. The amount of receipts depends entirely upon the number of patients. This number is a matter over which the trustees have no control, and for this reason we can estimate only approximately what our income will be. In order, however, that the asylum may not be embarrassed in its operations, we shall apply for an appropriation of \$40,000.

For the financial condition of the asylum, you are respectfully referred to the treasurer's report.

The trustees appointed in February Dr. Edward French, medical superintendent. He has been for twelve years connected with the asylum at Concord, N. H. Dr. Chas. A. Drew and Dr. Thomas Howell, both of whom had been upon the medical staff of institutions for the insane, were appointed assistant physicians. Mr. John B. Chapin was elected steward, Mrs. Mary A. Satterthwaite matron, Mr. Chas. C. Blaney treasurer and Mr. A. E. Read engineer. We believe all of these officials have labored faithfully, both in their professional and business capacity, for the best interests of the institution and the patients.

Any success which is achieved in the management of an asylum for the insane requires, on the part of those in charge, unceasing diligence, an unlimited amount of patience and never-failing kindness in manner and speech towards the unfortunate inmates. Keeping this high ideal of service always in mind, it will be the hope of the trustees that the Medfield Asylum, the latest addition to the large number of charitable institutions established by the Commonwealth, may meet the exacting demands of the public.

JOHN G. PARK,
ELIZABETH G. RICE,
BENJAMIN S. ATWOOD,
ELIZABETH THURBER,
IRA G. HERSEY,
WILLIAM O. BLANEY,
EDWIN V. MITCHELL,

Trustees.

SALARIES OF OFFICERS.

EDWARD FRENCH, M.D., <i>Superintendent</i> ,	\$2,500 00
CHARLES A. DREW, M.D., <i>Assistant Physician</i> ,	1,500 00
THOMAS HOWELL, M.D., <i>Assistant Physician</i> ,	900 00
JOHN B. CHAPIN, <i>Steward</i> ,	1,200 00
ARTHUR E. READ, <i>Engineer</i> ,	1,000 00
SUE R. HAYNES, <i>Book-keeper</i> ,	600 00
CHARLES C. BLANEY, <i>Treasurer</i> ,	500 00
MARY R. SATTERTHWAITE, <i>Matron</i> ,	450 00

VALUE OF STOCK AND SUPPLIES.

OCT. 1, 1896.

Live stock,	\$1,442 00
Produce of the garden on hand,	1,572 17
Carriages and agricultural implements,	2,372 98
Machinery and mechanical fixtures,	20,000 00
Beds and bedding in inmates' department,	12,000 00
Other furniture in inmates' department,	20,139 00
Personal property of State in superintendent's department,	7,861 00
Ready-made clothing,	6,549 91
Dry goods,	1,280 65
Provisions and groceries,	3,876 87
Drugs and medicines,	175 00
Fuel,	1,335 00
Other supplies undistributed,	930 22
	\$79,534 80

SUPERINTENDENT'S REPORT.

MEDFIELD, Sept. 30, 1896.

To the Board of Trustees of the Medfield Insane Asylum.

LADIES AND GENTLEMEN: — It is with pleasure that I submit the superintendent's report for the past five months of the Medfield Insane Asylum. As the year for the institutions in Massachusetts ends with September 30, this report is necessarily short and includes only five months, the time elapsing since it was opened. The work of cleaning, furnishing and otherwise preparing the different buildings was begun March 1, and was pushed forward as rapidly as possible. Twelve of the cottages for patients were ready to be put in order while six others designed for the filthy and more disturbed classes were in process of erection. These, with the chapel, stable and farm barns, are still unfinished. It was so far accomplished as to warrant your Board in notifying the State authorities that the asylum was ready to receive patients on the 1st of last May.

The unique arrangement of the buildings of the Medfield Asylum is such that if a general description is given the details of management can be better understood. The completed plan will show twenty-seven buildings, facing along the sides and ends of a rectangle. The situation is upon the summit of a hill, about 250 feet elevation above the sea, and known upon the topographical map of the State as "Castle Hill." The State owns 426 acres of land, part of it being situated in the town of Dover and all of it bordering upon the Charles River except upon the east side. The top of the hill is graded on a slope toward the west. The prospect from all the buildings is beautiful and extensive, and the location of the asylum was often sought in years past for the beauty of its view. The woodland north of the institution borders on the river, and offers an excellent opportunity for a magnificent park. It is already covered with desirable well-grown trees, and is diversified by

picturesque rocky hills, pleasant vales and many natural advantages.

The ward buildings are situated upon the sides and ends of the rectangle, and face in upon the chapel, laundry, dining rooms, kitchen and power house. The buildings are separate from each other, the spaces varying from one to eight rods in extent, which allows air and sun upon all four sides of each building. Eighteen of these buildings are designed to hold patients, the upper story for sleeping purposes and the lower story for sitting and work rooms. Most of the cottages will accommodate about 50 patients, while there are two which are capable of accommodating 100 each. Some of these buildings are provided with dining rooms, but it is expected that all patients who are able will walk to the general dining rooms for their meals, in the centre of the rectangle. Each dining room is capable of seating about 500 patients. The buildings are admirably lighted, with no dark corners, and substantially and thoroughly built. Heat is forced into all the rooms by fans in each basement, run by electric motors, and the foul air exhausted by a similar arrangement in every attic.

On the first day of May a transfer of 120 patients was received from the Taunton hospital, consisting of 60 of each sex. They were brought in a special train that was run up into the asylum grounds on a spur track. Part of these were able to walk to the building where they were received, the rest were conveyed in omnibuses to the same building. Each patient was examined, his weight, height and other personal characteristics taken and recorded, and then assigned to the proper building. Subsequent transfers were brought from the public station in omnibuses, except the transfer from the Danvers hospital, which was in a special train left on the spur track and afterwards conveyed to the institution in the same manner as the transfer from Taunton. May 12 a transfer of 29 women was received from the Northampton hospital. On May 27 30 women and 20 men were transferred from Westborough. June 4 a large transfer was received from the Worcester hospital, consisting of 110 men and 64 women. On June 6 24 women were sent in omnibuses from the city of Boston asylum, Austin Farm, at Roslindale. June 11, 20 women and 1 man were sent in the same manner from the same place.

June 23 a large transfer of 71 women and 106 men came from Danvers. Five other patients have been received from different hospitals at different times, making a total of 600, — 302 women and 298 men.

There have been discharged 13 patients; 2 were improved and 11 were not improved. Eight of these were transferred to other institutions by orders from the State Board of Lunacy and Charity. There were 24 deaths. When we consider the feeble condition of many of these patients, and that in some cases death was a "foregone conclusion" when they were admitted, and the fact that the change of habits and environment of elderly demented patients often hastens a fatal termination, it is not excessive. All those that eloped have been returned except one, who was arrested as a vagrant in a neighboring town and committed to another lunatic hospital.

The daily average number of patients is necessarily small, because of the time elapsing between the first and last transfer before the complement of patients was reached. The average of 461.61 is the total daily average number of patients for the past five months. It is obvious that the cost of maintenance will be higher than it would have been had there been a larger number of patients in the early months. The average weekly cost per patient has been \$3.21.

Efforts have been made to interest and engage as many patients as possible in work that was of equal advantage to the individual and the State. The female patients have been employed in the mending room, the laundry, kitchen, and in sewing and knitting in the wards. The men have worked in the general dining rooms, in the laundry, kitchen, on the teams and on the farm and grounds. There is plenty of work for male patients for the next few years in outside occupations upon the grounds in construction and repairs. Match games of baseball between nines of patients and attendants have furnished considerable entertainment to large numbers.

The water supply has already been considered by your Board, and no doubt another year will see us equipped with an adequate supply.

At present the several departments are working quite smoothly and satisfactorily, considering that everything has to be tried and adjusted in such a large and new institution.

The farm has been very successful and has produced a large supply of garden vegetables, so that for the past two months the tables for the patients have been supplied every day. Barrels of apples have been placed in all the wards, and the patients have eaten them freely, with no harmful effect.

The thanks of the patients and myself are extended to Rev. Father Donnelly of South Natick and to Revs. Mr. Savage and Mr. Dyer of Medfield, who have ministered to the spiritual wants of the sick and officiated at funerals; also to Miss Helen Brown for a generous supply of magazines, to Mrs. Thomas Upham for newspapers, to Miss Rose Allen for silk pieces and to Miss Garland of Dover, N. H., for magazines and silk pieces.

I feel grateful and appreciative to all my assistants and employees for their faithfulness and co-operation, especially during the opening months, when there was more or less difficulty in getting the several departments into smooth running order. To your Board I am also grateful for your hearty and generous support and your patience with the many imperfections of the management.

EDWARD FRENCH, M.D.,

Superintendent.

TREASURER'S REPORT.

To the Trustees of the Medfield Insane Asylum.

I herewith submit my first annual report on the finances of the Medfield Insane Asylum for the year ending Sept. 30, 1896.

RECEIPTS.

Received of the Commonwealth on account maintenance appropriation,	\$31,652 60
Received for the support of patients: --	
Of the Commonwealth,	\$1,526 00
Of cities and towns,	5,352 67
Of soldiers' relief,	91 20
Of individuals,	38 40
	7,008 27
Received for rent,	30 00
Received for interest,	11 44
Received from cash sales,	139 92
Received belonging to patients,	698 45
	\$39,540 68

EXPENDITURES.

Salaries, wages and labor,	\$12,213 73
Flour,	2,646 07
Meat of all kinds,	2,059 42
Fish,	311 93
Grain and meal for table,	206 70
Vegetables,	342 44
Sugar,	848 76
Molasses,	55 75
Tea,	223 59
Coffee,	420 82
Chocolate,	18 76
Milk,	983 31
Butter,	869 04
Cheese,	74 21
Fresh fruit,	217 29
Eggs, salt and other groceries,	1,226 05
All other provisions,	420 55
Grain for stock,	146 59
Hay,	258 77
Crockery and glassware,	71 69
Tin and wooden ware,	327 89
Beds and bedding,	79 57
Tools,	70 59

Fuel,	\$2,390 77
Soap,	315 50
Medical supplies,	109 58
Live stock,	136 00
Stable,	101 12
Blacksmithing,	107 34
Fertilizer and seeds,	687 09
Paints and oils,	288 33
Piping and fittings,	21 84
Ordinary repairs,	8 55
Books, stationery and postage,	180 00
Transportation and travelling expenses,	1,904 02
Expenses of superintendent and trustees,	240 55
Clothing,	2,237 37
Dry goods,	548 46
Boots and shoes,	494 55
Miscellaneous,	985 13

Total current expenses,	\$34,849 72
Undertaker's charges,	\$65 00
Money refunded,	63 16
Cash refunded patients,	91 83
	<hr/>
	219 99

	\$35,069 71
Cash on hand Sept. 30, 1896,	4,470 97
	<hr/>
	\$39,540 68

RESOURCES.

Cash on hand,	\$4,470 97
Due for support of patients:—	
From the Commonwealth,	\$4,699 00
From cities and towns,	16,157 82
From soldiers' relief,	261 60
From individuals,	73 60
	<hr/>
	21,192 02
Account maintenance appropriation,	18,410 56
Interest,	13 01
	<hr/>
	\$44,086 56

LIABILITIES.

Due for supplies,	\$10,718 89
for salaries and wages,	2,768 58
for undertaker's charges,	20 00
to patients,	606 62
	<hr/>
	14,114 09
Total surplus,	\$29,972 47

Respectfully submitted,

CHARLES C. BLANEY,

Treasurer.

REVISED TABLES

FOR

UNIFORM STATISTICS

IN THE

MASSACHUSETTS HOSPITALS AND ASYLUMS
FOR THE INSANE.

APPROVED BY THE STATE BOARD OF LUNACY AND CHARITY,
MARCH 10, 1891.

TABLE No. 1. — *General Statistics of the Year.*

	INSANE.			HABITUAL DRUNKARDS.			VOLUNTARY PATIENTS.			AGGREGATES.		
	Ma.	Fe.	Tot.	Ma.	Fe.	Tot.	Ma.	Fe.	Tot.	Ma.	Fe.	Tot.
Balance in asylum Oct. 1, 1895,	-	-	-	-	-	-	-	-	-	-	-	-
Admitted within the year,	298	302	600	-	-	-	-	-	-	298	302	600
Whole number of cases within the year,	298	302	600	-	-	-	-	-	-	298	302	600
Discharged within the year:—												
Viz.: as recovered,	-	-	-	-	-	-	-	-	-	-	-	-
as much improved,	-	-	-	-	-	-	-	-	-	-	-	-
as improved,	2	-	2	-	-	-	-	-	-	2	-	2
as not improved,	7	4	11	-	-	-	-	-	-	7	4	11
as not insane,	-	-	-	-	-	-	-	-	-	-	-	-
Deaths,	17	7	24	-	-	-	-	-	-	17	7	24
Patients remaining Sept. 30, 1896:—												
Viz.: supported as State patients,	73	55	128	-	-	-	-	-	-	73	55	128
as town patients,	199	236	435	-	-	-	-	-	-	199	236	435
as private patients,	-	-	-	-	-	-	-	-	-	-	-	-
Number of different persons within the year,	298	302	600	-	-	-	-	-	-	298	302	600
Persons admitted,	298	302	600	-	-	-	-	-	-	298	302	600
Daily average of patients,	223.57	238.03	461.60	-	-	-	-	-	-	223.57	238.03	461.60
Viz.: State patients,	62.17	44.48	106.65	-	-	-	-	-	-	62.17	44.48	106.65
town patients,	161.40	193.55	354.95	-	-	-	-	-	-	161.40	193.55	354.95

TABLE No. 2. — *Monthly Admissions, Discharges and Averages.*

MONTHS.	ADMISSIONS.			DISCHARGES.			DEATHS.			DAILY AVERAGE OF PATIENTS IN HOUSE.		
	Males.	Females.	Totals.	Males.	Females.	Totals.	Males.	Females.	Totals.	Males.	Females.	Totals.
1896.												
April,	-	-	-	-	-	-	-	-	-	-	-	-
May,	80	119	199	-	-	-	2	-	2	62.58	83.55	146.13
June,	217	181	398	-	-	-	2	-	2	207.30	227.13	434.43
July,	-	-	-	4	2	6	2	3	5	289.61	295.97	585.58
August,	-	-	-	3	1	4	5	3	8	282.97	292.35	575.32
September,	1	2	3	2	1	3	6	1	7	275.40	291.13	566.53
Total cases,	298	302	600	9	4	13	17	7	24	-	-	-
Total persons,	298	302	600	9	4	13	17	7	24	223.57	238.03	461.60

TABLE NO. 3. — *Received on First and Subsequent Admissions.*

NUMBER OF THE ADMISSION.	CASES ADMITTED.			TIMES PREVIOUSLY RECOVERED.		
	Males.	Females.	Totals.	Males.	Females.	Totals.
First,	298	302	600	-	-	-
Second,	-	-	-	-	-	-
Third,	-	-	-	-	-	-
Total of cases,	298	302	600	-	-	-
Total of persons,	298	302	600	-	-	-

TABLE NO. 4. — *Relation to Hospitals of Persons admitted.*

	Males.	Females.	Total.
Never before in any hospital for the insane,	-	-	-
Former inmates of this asylum only,	-	-	-
Former inmates of other hospitals only,	298	302	600
Former inmates of this asylum and other hospitals	-	-	-
Total of persons,	298	302	600

TABLE NO. 5. — *Parentage of Persons admitted.*

PLACE OF NATIVITY.	MALES.		FEMALES.		TOTAL.	
	Father.	Mother.	Father.	Mother.	Father.	Mother.
Unknown,	298	298	302	302	600	600
Total,	298	298	302	302	600	600

TABLE No. 6.—*Residence of Persons admitted.*

PLACES.	Males.	Females.	Total.
Massachusetts:—			
Barnstable County,	9	2	11
Berkshire County,	-	6	6
Bristol County,	20	17	37
Dukes County,	1	-	1
Essex County,	62	29	91
Franklin County,	1	2	3
Hampden County,	-	12	12
Hampshire County,	-	4	4
Middlesex County,	77	55	132
Norfolk County,	12	18	30
Plymouth County,	6	7	13
Suffolk County,	95	141	236
Worcester County,	6	8	14
Unknown,	9	1	10
Totals,	298	302	600

TABLE No. 7.—*Civil Conditions of Persons admitted.*

NUMBER OF THE AD- MISSION.	UNMARRIED.			MARRIED.			WIDOWED.			UNKNOWN.			TOTALS.		
	Ma.	Fe.	Tot.	Ma.	Fe.	Tot.	Ma.	Fe.	Tot.	Ma.	Fe.	Tot.	Ma.	Fe.	Tot.
First, . . .	175	56	231	99	102	201	15	38	53	9	6	15	298	302	600
Second, . . .	-	-	-	-	-	-	-	-	-	-	-	-	-	-	-
Third, . . .	-	-	-	-	-	-	-	-	-	-	-	-	-	-	-
Totals, . . .	175	56	231	99	102	201	15	38	53	9	6	15	298	302	600

TABLE NO. 8. — *Occupation of Persons admitted.*

MALES.			
Agents,	2	Masons,	2
Artist,	1	Machinists,	8
Auctioneer,	1	Mariners,	5
Architect,	1	Needle maker,	1
Barbers,	6	None,	63
Blacksmiths,	2	Painters,	5
Brakeman,	1	Pedlers,	3
Calker,	1	Piano makers,	3
Clergyman,	1	Porter,	1
Cigar maker,	1	Printers,	3
Collector,	1	Paper hanger,	1
Carpenters,	6	Plumber,	1
Contractors,	2	Slater,	1
Curriers,	8	Salesmen,	10
Farmers,	9	Shoemakers,	23
Fishermen,	3	Stone cutter,	1
Fruit dealer,	1	Sail maker,	1
Gardeners,	2	Tailors,	4
Glazier,	1	Tramps,	3
Hatter,	1	Teamsters,	3
Jewellers,	2	Upholsterer,	1
Lawyers,	2	Wheelwright,	1
Laborers,	67	Waiter,	1
Letter carriers,	2	Wood engraver,	1
Mill operatives,	18	Unknown,	6
Merchants,	2	Total,	298
Musicians,	2		
FEMALES.			
Book-keeper,	1	None,	84
Composer,	1	Laundresses,	2
Elocutionist,	1	Nurses,	2
Cooks,	3	Saleswoman,	1
Domestics,	61	Seamstresses,	7
Dressmakers,	6	Tailoresses,	8
Housekeepers,	98	Unknown,	8
Musicians,	1	Total,	302
Mill operatives,	18		

TABLE NO. 9. — *Probable Causes of*

CAUSES.	PATIENTS ADMITTED.								
	INSANE.			HABITUAL DRUNKARDS.			VOLUNTARY PATIENTS.		
	Males.	Females.	Totals.	Males.	Females.	Totals.	Males.	Females.	Totals.
<i>Physical.</i>									
1	Apoplexy,	1	-	1	-	-	-	-	-
2	Congenital,	7	6	13	-	-	-	-	-
3	Dissipation,	2	-	2	-	-	-	-	-
4	Epilepsy,	21	17	38	-	-	-	-	-
5	Fever,	5	3	8	-	-	-	-	-
6	Fall,	3	-	3	-	-	-	-	-
7	Heredity,	19	30	49	-	-	-	-	-
8	Ill health,	5	16	21	-	-	-	-	-
9	Injury to cord,	1	1	2	-	-	-	-	-
10	Influenza,	3	-	3	-	-	-	-	-
11	Injury to head,	11	5	16	-	-	-	-	-
12	Intemperance,	43	16	59	-	-	-	-	-
13	Masturbation,	21	3	24	-	-	-	-	-
14	Menopause,	-	8	8	-	-	-	-	-
15	Nervous prostration,	-	3	3	-	-	-	-	-
16	Nephritis,	-	1	1	-	-	-	-	-
17	Overwork,	5	9	14	-	-	-	-	-
18	Organic brain disease,	5	-	5	-	-	-	-	-
19	Puerperal,	-	8	8	-	-	-	-	-
20	Spinal disease,	1	-	1	-	-	-	-	-
21	Senility,	3	7	10	-	-	-	-	-
22	Suppressed menstruation,	-	1	1	-	-	-	-	-
23	Syphilis,	1	2	3	-	-	-	-	-
24	Sunstroke,	5	-	5	-	-	-	-	-
<i>Mental.</i>									
25	Disappointment,	-	1	1	-	-	-	-	-
26	Domestic affliction,	4	5	9	-	-	-	-	-
27	Financial troubles,	3	-	3	-	-	-	-	-
28	Hysteria,	-	1	1	-	-	-	-	-
29	Jealousy,	-	1	1	-	-	-	-	-
30	Religious excitement,	3	9	12	-	-	-	-	-
31	Worry,	3	6	9	-	-	-	-	-
32	Unknown,	123	143	266	-	-	-	-	-
Totals,		298	302	600	-	-	-	-	-

TABLE NO. 11. — *Ages of Insane at First Attack, Admission and Death.*

AGES.	PERSONS FIRST ADMITTED TO ANY HOSPITAL.						PERSONS DIED.					
	AT FIRST ATTACK.			WHEN ADMITTED.			AT FIRST ATTACK.			AT TIME OF DEATH.		
	Ma.	Fe.	Tot.	Ma.	Fe.	Tot.	Ma.	Fe.	Tot.	Ma.	Fe.	Tot.
Congenital,	-	-	-	-	-	-	-	-	-	-	-	-
15 years and less,	-	-	-	-	-	-	2	-	2	-	-	-
From 15 to 20 years,	-	-	-	-	-	-	1	-	1	2	-	2
20 to 25 years,	-	-	-	-	-	-	-	-	-	-	-	-
25 to 30 years,	-	-	-	-	-	-	3	2	5	-	-	-
30 to 35 years,	-	-	-	-	-	-	1	1	2	1	2	3
35 to 40 years,	-	-	-	-	-	-	-	-	-	-	1	1
40 to 50 years,	-	-	-	-	-	-	-	1	1	2	-	2
50 to 60 years,	-	-	-	-	-	-	2	1	3	2	2	4
60 to 70 years,	-	-	-	-	-	-	3	2	5	4	1	5
70 to 80 years,	-	-	-	-	-	-	2	-	2	6	1	7
Over 80 years,	-	-	-	-	-	-	-	-	-	-	-	-
Unknown,	-	-	-	-	-	-	3	-	3	-	-	-
Total of persons,	-	-	-	-	-	-	17	7	24	17	7	24
Mean ages,	-	-	-	-	-	-	44.35	43.29	43.82	56.06	50.29	53.17

TABLE NO. 12. — *Reported Duration of Disease before Last Admission.*

PREVIOUS DURATION.	FIRST ADMISSION TO ANY HOSPITAL.			ALL OTHER ADMISSIONS.			TOTALS.		
	Ma.	Fe.	Tot.	Ma.	Fe.	Tot.	Ma.	Fe.	Tot.
Congenital,	-	-	-	-	-	-	-	-	-
Under 1 month,	-	-	-	-	-	-	-	-	-
From 1 to 3 months,	-	-	-	-	-	-	-	-	-
3 to 6 months,	-	-	-	-	-	-	-	-	-
6 to 12 months,	-	-	-	-	-	-	-	-	-
1 to 2 years,	-	-	-	22	9	31	22	9	31
2 to 5 years,	-	-	-	90	72	162	90	72	162
5 to 10 years,	-	-	-	71	69	140	71	69	140
10 to 20 years,	-	-	-	79	99	178	79	99	178
Over 20 years,	-	-	-	20	38	58	20	38	58
Unknown,	-	-	-	16	15	31	16	15	31
Total of cases,	-	-	-	298	302	600	298	302	600
Total of persons,	-	-	-	298	302	600	298	302	600
Average in years,	-	-	-	8.46	10.58	9.52	8.46	10.58	9.52

TABLE No. 14. — *Discharges, classified by Admission and Result.*

NUMBER OF ADMISSIONS.	RECOVERED.			MUCH IMPROVED.			IMPROVED.			NOT IMPROVED.			NOT INSANE.			DIED.			TOTALS.		
	Males.	Females.	Totals.	Males.	Females.	Totals.	Males.	Females.	Totals.	Males.	Females.	Totals.	Males.	Females.	Totals.	Males.	Females.	Totals.	Males.	Females.	Totals.
First,	-	-	-	-	-	-	2	-	2	7	4	11	-	-	-	17	7	24	26	11	37
Second,	-	-	-	-	-	-	-	-	-	-	-	-	-	-	-	-	-	-	-	-	-
Total of cases,	-	-	-	-	-	-	2	-	2	7	4	11	-	-	-	17	7	24	26	11	37
Total of persons,	-	-	-	-	-	-	2	-	2	7	4	11	-	-	-	17	7	24	26	11	37

TABLE No. 15. — Causes of Death.

CAUSES.	INSANE.			HABITUAL DRUNKARDS.			VOLUNTARY PATIENTS.			TOTALS.		
	Males.	Females.	Totals.	Males.	Females.	Totals.	Males.	Females.	Totals.	Males.	Females.	Totals.
Nervous system:—												
Apoplexy,	3	—	3	—	—	—	—	—	—	3	—	3
Epilepsy,	1	—	1	—	—	—	—	—	—	1	—	1
General paralysis,	2	—	2	—	—	—	—	—	—	2	—	2
Organic disease of brain,	2	2	4	—	—	—	—	—	—	2	2	4
Respiratory system:—												
Phthisis,	2	2	4	—	—	—	—	—	—	2	2	4
Pneumonia,	—	1	1	—	—	—	—	—	—	—	1	1
Pulmonary gangrene, .	1	—	1	—	—	—	—	—	—	1	—	1
General:—												
Heart disease,	3	—	3	—	—	—	—	—	—	3	—	3
Exhaustion of age and dementia,	3	1	4	—	—	—	—	—	—	3	1	4
Heat prostration and exhaustion of chronic mania,	—	1	1	—	—	—	—	—	—	—	1	1
Totals,	17	7	24	—	—	—	—	—	—	17	7	24

TABLE No. 16. — Recoveries, classified by Duration of Disease and Treatment.

PERIOD.	LAST ATTACK.						ALL ATTACKS.								
	DURATION BEFORE ADMISSION.			HOSPITAL RESIDENCE.			WHOLE DURATION FROM THE ATTACK.			WHOLE KNOWN PERIOD OF MENTAL DISEASE.			WHOLE KNOWN HOSPITAL RESIDENCE.		
	Males.	Females.	Totals.	Males.	Females.	Totals.	Males.	Females.	Totals.	Males.	Females.	Totals.	Males.	Females.	Totals.
A. — Insane : —															
Congenital,															
Under 1 month,															
From 1 to 3 months,															
3 to 6 months,															
6 to 12 months,															
1 to 2 years,															
2 to 5 years,															
5 to 10 years,															
10 to 20 years,															
Over 20 years,															
Unknown,															
Totals,															
Average of known cases,															
B. — Habitual drunkards,															
C. — Voluntary patients,															

TABLE No. 17. — Deaths, classified by Duration of Disease and Treatment.

PERIOD.	DURATION BEFORE ADMISSION.			LAST ATTACK.			WHOLE DURATION FROM THE ATTACK.			ALL ATTACKS.			WHOLE KNOWN HOSPITAL RESIDENCE.			
	Males.	Females.	Totals.	Males.	Females.	Totals.	Males.	Females.	Totals.	Males.	Females.	Totals.	Males.	Females.	Totals.	
																HOSPITAL RESIDENCE.
A. — Insane: —																
Congenital,	—	—	—	—	—	—	—	—	—	—	—	—	—	—	—	—
Under 1 month,	—	—	—	—	—	—	—	—	—	—	—	—	—	—	—	—
From 1 to 3 months,	—	—	—	8	1	9	—	—	—	—	—	—	—	—	—	—
3 to 6 months,	—	—	—	9	4	13	—	—	—	—	—	—	—	—	—	—
6 to 12 months,	—	—	—	—	—	—	—	—	—	—	—	—	—	—	—	—
1 to 2 years,	3	—	3	—	—	—	3	—	—	—	—	—	—	—	—	—
2 to 5 years,	5	2	7	—	—	—	5	2	7	—	—	—	—	—	—	—
5 to 10 years,	1	3	4	—	—	—	1	3	4	—	—	—	—	—	—	—
10 to 20 years,	2	2	4	—	—	—	2	2	4	—	—	—	—	—	—	—
Over 20 years,	3	—	3	—	—	—	3	—	—	—	—	—	—	—	—	—
Unknown,	3	—	3	—	—	—	3	—	—	—	—	—	—	—	—	—
Totals,	17	7	24	17	7	24	17	7	24	17	7	24	17	7	24	24
Average of known cases (in years),	10.13	7.00	8.56	—	—	—	10.13	7.00	8.56	10.13	7.00	8.56	9.53	7.00	8.27	8.27

NOTE. — No material for Tables Nos. 16, 18 and 19.

ACCOUNT OF WORK DONE IN SEWING ROOM TO OCT. 1, 1896.

Aprons,	298	Pillow slips,	1,134
Bibs,	135	Robe,	1
Bandages,	261	Rubber aprons,	3
Bed sheet,	1	Rugs bound,	27
Bed pads,	21	Sheets,	2,202
Base ball sacks,	2	Suspenders,	275
Clothes bags,	112	Strong dresses,	32
Coffee bags,	23	Tie strings,	127
Camisoles,	32	Towels,	248
Dresses,	14	Table pads,	7
Drawers,	14	Stockings knit, pairs,	60
Dryer coverings,	150	Underskirts,	6
Iron holders,	96	Window curtains,	9
Napkins,	227		

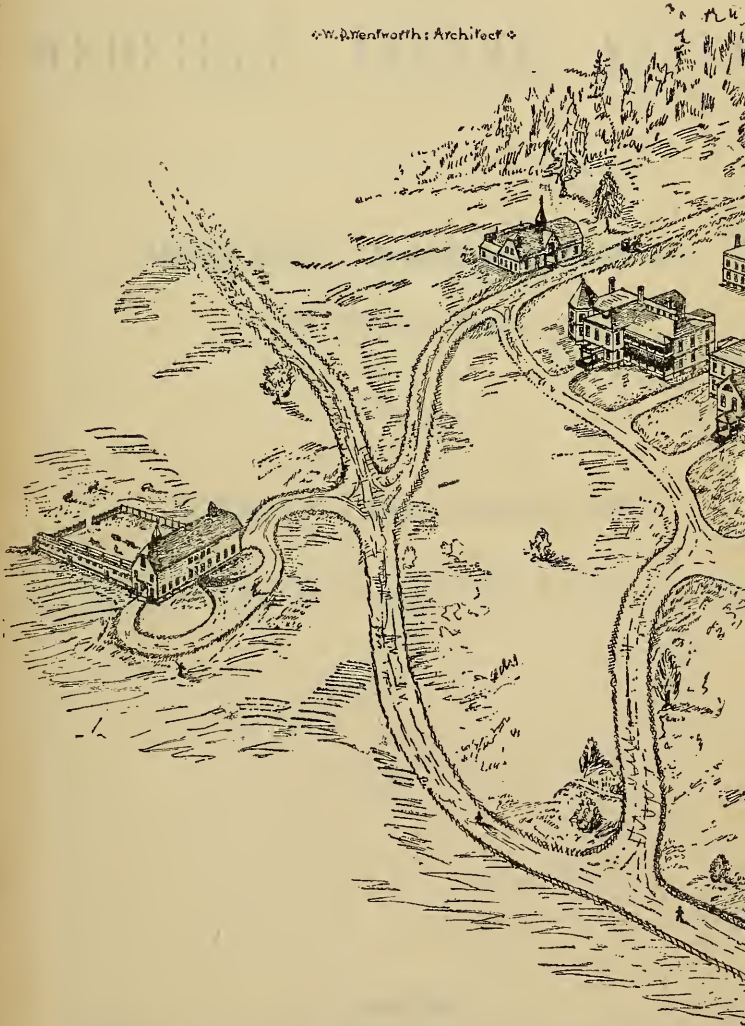
MENDING.

Aprons,	54	Hat bound,	1
Bed ticks,	5	Overalls,	226
Blanket,	1	Pants,	637
Coats,	171	Pillow slips,	3
Clothes bags,	2	Shirts,	917
Coffee bags,	27	Sheets,	42
Dresses,	25	Stockings,	1,043
Drawers,	648	Vests,	131

PRODUCTS OF THE FARM.

135 bushels green peas,	\$131 30
230½ bushels string beans,.	132 60
100 bushels shelled beans,	106 80
217 bushels beets,	60 00
569 bushels turnips,	195 50
150 bushels carrots,	42 50
35 bushels onions,	26 25
52 bushels tomatoes,	40 70
508 bushels potatoes,	243 20
777 bushels green corn,	242 63
8,180 large cucumbers,	54 05
21,000 small cucumbers (for pickling),	45 20
675 dozen summer squashes,	178 69
10 tons winter squashes,	100 00
275 pounds rhubarb,	4 13
1,500 bushels apples,	311 80
75 bushels cranberries,	100 00
20 tons hay,	360 00
20 tons meadow hay,	160 00
12 tons corn fodder,	96 00
8 tons rye straw,	80 00

W. P. Menfroth: Architect



13.
230
100
217
569
150
35 l
52
508
777
8,180 h.
21,000 s
675
10
275
1,500
74
20
20
14
4