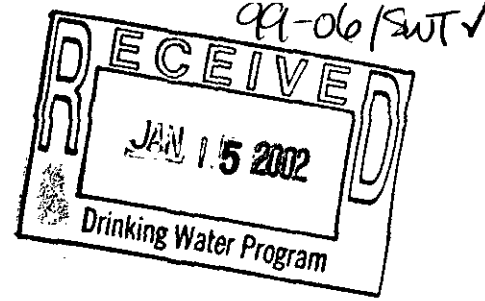


CHARLES



**BUSINESS PARTNERSHIP DEVELOPMENT PROJECT
FOR CAMBRIDGE WATERSHED PROTECTION
FINAL REPORT**

Source Water Protection Grant (99-06-SWT)

**Submitted to:
Massachusetts Department of Environmental Protection
Drinking Water Program
One Winter Street, 6th Floor
Boston, MA 02108**

**Submitted by:
Charles River Watershed Association
2391 Commonwealth Avenue
Auburndale, MA 02466**

9

January 10, 2002

TABLE OF CONTENTS

	<u>Page</u>
1. Introduction	1
2. Objectives	2
3. Phase I – Data Collection	4
4. Phase II – Program Development	4
5. Evaluation	8
6. Recommendations	8
7. Financial Summary	9

FIGURES

Figure 1 – Map of Study Area	3
------------------------------	---

APPENDICES

Appendix A – Maps of the two Cambridge watershed sub-drainage basins produced by
HDM

Appendix B – Partial sample of business data collected

Appendix C – Copies of all project related invoices

1. INTRODUCTION

1.1 Background

The City of Cambridge water supply system consists of three raw water reservoirs: Hobbs Brook Reservoir, Stony Brook Reservoir and Fresh Pond Reservoir. Additionally, there is one finished water reservoir, Payson Park Reservoir. The Hobbs Brook and Stony Brook Reservoirs are located in Waltham, Weston, Lincoln, and Lexington. Fresh Pond is located in Cambridge and Payson Park in Belmont. The Cambridge water supply is operated by the Cambridge Water Department (CWD) and supplies about 15 million gallons of water each day to more than 95,000 customers.

Because the CWD owns less than five percent of the 24 square mile watershed contributing to the Hobbs Brook and Stony Brook Reservoirs, protection of the water supply presents a difficult challenge. Lack of land ownership and regulatory authority limit the range of watershed-management alternatives, and the high cost of land in the basin precludes future land acquisitions. To meet the management challenges of the reservoirs, CWD has developed an extensive and innovative Source Protection Program that includes streamflow and water quality monitoring, tracking development and construction activities, advocating for stormwater management improvements, and maintaining a hazardous materials response program.

A significant part of CWD's Source Protection Program is an effort to build positive working relationships with communities, government agencies, and other parties with interest in the watershed. The CWD sponsors the Cambridge Watershed Advisory Committee (CWAC), which includes representatives from communities in the basin, and has developed strong partnerships with businesses such as GTE Laboratories and Polaroid Corporation, State and Federal agencies such as the Massachusetts Highway Department and the U.S. Geological Survey, and Minuteman Regional High School in Lexington.

Since 1997, the Charles River Watershed Association (CRWA) has played a key role in maintaining positive relationships between the CWD and the surrounding community. CRWA works closely with CWD to facilitate and coordinate communication among communities within the Cambridge watershed by convening representatives of municipal planning boards, conservation commissions, elected officials, and other interested parties for bimonthly CWAC meetings to discuss watershed issues, strategize for watershed protection, and provide cross-boundary support for ongoing projects. CRWA also organizes an annual "Tour of the Cambridge Watershed" highlighting success stories and produces a quarterly newsletter, *From the Source*, reporting watershed news and ideas for watershed protection. The current project complements this existing relationship with the Water Department, and broadens the audience for watershed protection issues.

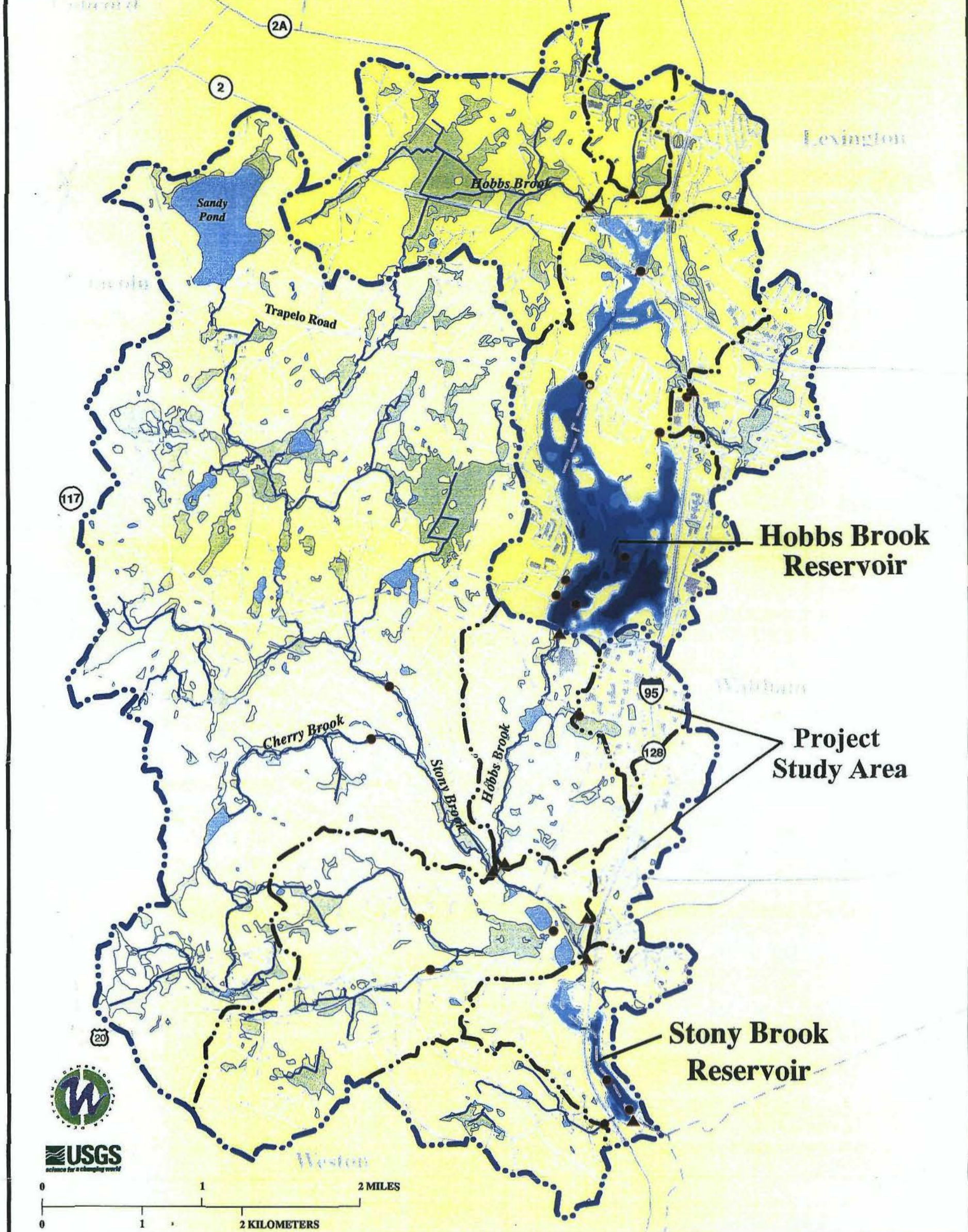
2. OBJECTIVES

The Business Partnership Development project focuses on educating the business community in the subwatershed that encompasses Hobbs Brook and Stony Brook Reservoirs about stormwater impacts and control. The study area includes those industrial and commercial facilities in Waltham discharging to Hobbs Brook, downstream of the Hobbs Brook Reservoir and to Stony Brook, upstream of the Stony Brook Reservoir (see Figure 1). This project directly advances and enhances ongoing efforts by the Cambridge Water Department to protect its surface water source within the context of a developed watershed.

The Business Partnership Development Project aims to more closely connect the CWD and the Waltham businesses located near Route 128 and Winter Street (see Figure 1). Land use in these subwatersheds is predominantly commercial and industrial, with stormwater from the sites ultimately discharging to the Cambridge Reservoir system. For this project CRWA has inventoried the existing stormwater structures and quantified the amount of impervious area on the business properties. With input from the CWD and the business community, we have developed a draft approach for a communication and educational program to inform businesses about stormwater pollution prevention measures that could be applied relatively inexpensively to prevent degradation of the reservoirs' water quality. CWD has already worked closely with several businesses, such as Stride Rite, GTE Laboratories, Polaroid, Astra, and Waltham Woods, implementing structural stormwater best management practices to minimize the stormwater pollutant loadings from their properties to the Cambridge drinking water supply. (Under a separate grant from DEP, CRWA has tested the pollutant removal efficiencies of three of these systems.) The Business Partnership Development program will help CWD reach more businesses, strengthening achievement of its long-term goals of protecting the water supply of over 95,000 customers.

The project consists of several phases. First, data was collected to create a business spatial database, a new storm drain spatial database, and a refined watershed boundary. Second, based on information gathered during the first phase, a draft plan was developed for communication and education efforts geared towards the business community in the study area, including inexpensive stormwater pollution prevention measures. Draft communication and education materials will be developed for review by CWD. Third, using the draft plan and materials developed in the second phase, a series of meetings will be held in the future with various focus groups consisting of select businesses in the study area to refine the materials presentation and revise the communication and education plan. Using these revised materials, CWD will then hold a series of meetings within the Cambridge Reservoir subwatershed with the target audience to educate them on source water protection techniques and encourage them to implement such techniques on their own properties with assistance and guidance from CWD if needed.

CAMBRIDGE WATERSHED STUDY AREA



Base from U.S. Geological Survey NMD, MassGIS, Cambridge Water Department, Harvard Design and Mapping, and Boston Edison. This map built by USGS-WRD personnel in Marlborough, MA, April 1998.

EXPLANATION

BASINS		RESERVOIR BATHYMETRY—Depth in Feet	
	Wetlands		0-5
	Hobbs Brook Reservoir Watershed		6-10
	Stony Brook Reservoir Watershed		11-15
	Basin Boundary		16-20
	Subbasin Boundary		21-25
	Continuously-Monitored Stations		26-30
	Manually-Sampled Stations		31-35

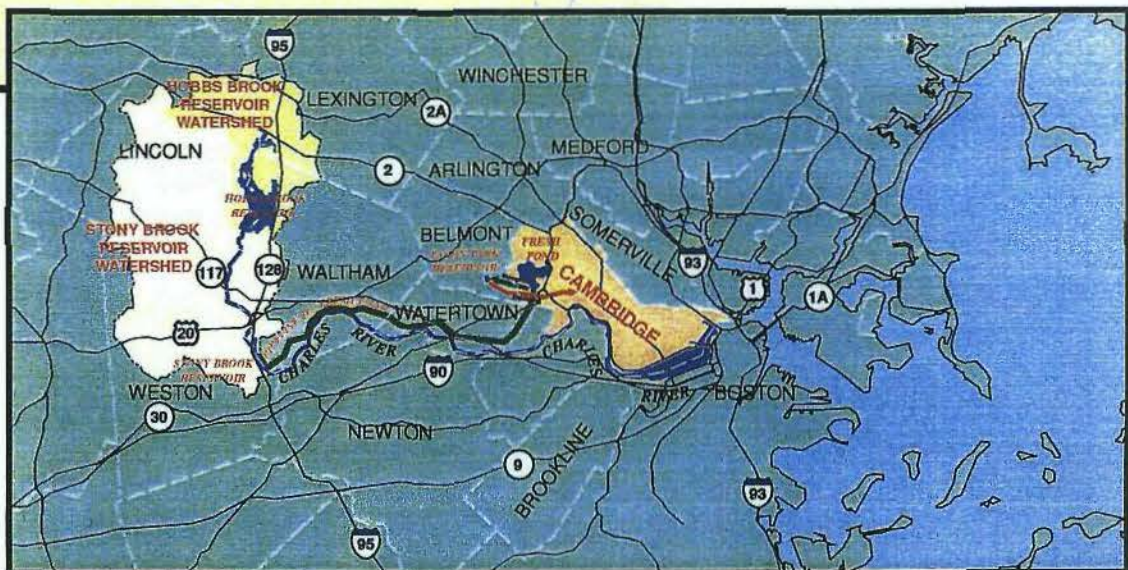


FIGURE 1. STUDY AREA

The first phase and part of the second phase of this project have been accomplished under this DEP grant. However, additional funding needs to be found to take the project to its next level in order to carry out the draft education and communication plan, revise the materials, and bring about significant positive changes in the subwatershed to protect Cambridge's source waters.

3. PHASE I – DATA COLLECTION

Phase I focused on the development of spatial and attribute databases to support future phases of the project. CRWA subcontracted this work to Harvard Design and Mapping Company, Inc. (HDM), which has extensive experience developing digital base maps and environmental data using GIS and GPS technology.

HDM accumulated additional data and updated existing data to meet CWD's immediate requirements. One of the newly-developed databases describes all private businesses in the study area. In addition to the new business database, HDM updated the building data layers. The original building data layers were developed and used by HDM on past projects for CWD and Massachusetts Highway Department for environmental monitoring and planning work in the watershed. HDM completed a windshield survey of businesses and updated the businesses in the existing database while assigning each building ID numbers. The telephone number, number of employees, sales, and SIC code information for each business came from a commercial Claritas database. HDM digitized the new building footprints and linked the business data to building footprint data. The map, displayed in GIS, shows information collected for each business housed in a building, when the building is highlighted.

A new spatial data layer was created for the drainage features to include pipes, catch basins, manholes, and outfall points. These features were obtained from the estimated 44 engineering plans (40-scale) made available to HDM and then verified during a field check. After field checking and digitizing these features, HDM updated the watershed boundary. The final paper maps are included in Appendix A. The GIS data and file system was organized and delivered to the Cambridge Water Department (CWD) for future use. A small sample of the business data collected can be seen in Appendix B. The complete database is too large for display in a paper table.

4. PHASE II – PROGRAM DEVELOPMENT

Phase II of the Business Partnership Development project draws on the data gathered in Phase I. Based on the number of businesses, the potential for contamination from parking lots and access roads, and the types of businesses in the subwatershed, CRWA developed a draft approach for communications with watershed businesses. The goal is to inform local business and facility owners regarding the potential for contamination of the nearby drinking water reservoir – and how they can inexpensively help prevent contamination via stormwater pollution prevention measures.

Meetings and discussions were held with Chip Norton, Watershed Manager of the Cambridge Water Department, to discuss the draft education and communication approach. His preference was to proceed with the draft approach using CWD's existing materials, rather than creating new ones. Therefore, Phase II focuses on the mechanism that will be used to evaluate existing materials and solicit input from the local businesses for target audience improvement.

The communications and education efforts will:

- ◆ Raise awareness of the resource and its final use.
- ◆ Describe threats to the drinking water source.
- ◆ Identify steps that businesses can take to prevent spills and contamination through stormwater runoff by applying stormwater pollution prevention measures.

Stormwater pollution prevention measures that will be communicated to business owners and managers may include, but are not restricted to:

- ◆ Street sweeping
- ◆ Catch basin cleaning
- ◆ Erosion control/bank stabilization
- ◆ Stormdrain stenciling
- ◆ Proper construction activities
- ◆ Solid waste management
- ◆ Avoidance of excessive application of deicers, fertilizers, pesticides, and herbicides

Options for communicating these messages include the internet, video, newsletters, brochures, existing print media outlets, workshops and slide presentations, and exhibits. The communications approach will incorporate these options as appropriate, based on the audience as identified in Phase I.

4.1 Draft Approach for a Communication and Education Program

4.1.1 Determine Contacts

First, using the business database created in Phase I, the appropriate contact people at each business should be determined. It is important to identify the most suitable contact in each hierarchical level: upper management, middle management, facilities manager. These people make up the eventual target audiences for final presentations geared to raise awareness about the resource, describe threats to the drinking water source, and identify stormwater pollution prevention measures that could be inexpensively applied by area businesses. Select portions of this group of people will comprise a smaller subset who will participate in various focus group meetings geared toward discussions of the most successful approaches and media presentations. It is anticipated that different approaches will be needed for each target audience.

4.1.2. Focus Group Meetings

Having determined the target audiences for CWD's message, it is important to assess the effectiveness of the current message and various potential outreach methods for disseminating the message. The best method of getting feedback is to hold focus group meetings with select end-users. It is vital that the focus group meetings work on several different levels by isolating both the target audiences and the target groups. Target audiences include upper management who direct the policy of the organization and oversee middle management. The middle managers (in this case probably the environmental managers) carry out the organizational policies and oversee the facilities managers who actually carry out the day-to-day activities. Each level has different issues, goals, and ways of approaching things that would result in different suggestions for presentation. Target groups consist of isolating business types such as industry groups (gas stations, dry cleaners), educational groups (schools, colleges, libraries, continuing education centers), large companies, office park property managers, and municipal groups. Examples of big businesses are the Clean Charles Coalition, Route 128 Business Association, Polaroid, Boston Properties, and the Mass Highway Department. Municipal groups would consist of local Department of Public Works and politicians. Again, each target group would have different goals and require different approaches. In order to get the most productive results from a focus group, it is important not to mix either the target audiences (upper management, middle management, or facilities managers) or the target groups (industry groups, educational groups, large companies, property managers, or municipal groups) within each focus group meeting.

The purpose of focus groups would be to facilitate detailed discussion of the usefulness of existing materials with the end users and receive invaluable feedback on presentation approaches – what to say and how to present it to draw others in, materials format, as well as “big picture” ideas and goals. Examples of possible materials format include folders of information, poster displays in the lobby, a checklist for managers, an exhibit at corporate headquarters, brochures, videos, articles for in-house newsletters, workshops or conferences, or some combination of the above.

In addition to providing feedback on materials and presentations, focus groups also help to build interest and buy-in. They provide invaluable interested and knowledgeable contacts with whom any future requests or meetings could be discussed or arranged.

4.1.3 Update, Replace, and Create Presentation Materials

After the focus group meetings, presentation materials should be amended according to the suggestions and results gleaned from these select end-users during Phase III. Additional materials could also be developed based on recommendations of the focus groups. Once the materials are finalized, smaller group meetings can be arranged during which the new ideas and presentations can be implemented during Phase IV.

4.1.4 Implementation of Communication and Education Program (Phase IV)

Using the new and updated materials, CWD can start a speaking program geared towards small groups of businesses. This can be done in several ways. If the focus groups indicate the importance of approaching the various target groups differently, it would be imperative to hold separate meetings with each isolated business type. For example, CWD would approach industry groups such as gas stations or dry cleaners differently than they would approach educational groups such as schools, colleges, libraries, or continuing education centers. Representatives from large companies should be approached differently than office park property managers or municipal representatives. An alternate approach would be to have a big business like Polaroid or Boston Properties act as a "big brother", helping the smaller businesses. For example, Polaroid could sponsor a luncheon for ten smaller local businesses within the same industry group, giving CWD a place/platform to make their pitch.

4.1.5 Partner With Other Organizations

To maximize resources and facilitate introductions, CWD should partner with other organizations which have a similar goal. For example, the Clean Charles Coalition is a voluntary coalition of major private institutions and organizations committed to making the Charles River fishable and swimmable by the year 2005. Some of its territory includes the Cambridge Watershed. Several of the Coalition's goals include working with institutions and businesses to develop and promote an awareness of the importance of the watershed and how each group contributes to its health, as well as to develop communications tools for use in inter-institutional education, training, and cooperation. The Clean Charles Coalition and CWD would mutually benefit by working together on these goals. They could not only work together on developing educational materials, but could pool resources to produce a larger quantity or more high-end products. The Coalition may also be able to introduce CWD to key personnel in target businesses and facilitate entry.

4.1.6 Education Tools

As has already been mentioned, CWD should plan to expand or change existing educational materials such as brochures, flyers, slide presentations, etc. to include the suggestions and input from stakeholders voiced at the focus group meetings mentioned in Section 4.1.2 and 4.1.3 (above). In addition a traveling conference-style exhibit should be built and created, which has the ability to be updated or changed to suit the target audiences. New educational materials could also be created based on results from the focus group meetings already mentioned. In addition, there are several educational tools already in existence that can be used to further the cause.

- a) EPA produced a video on how to get businesses to make improvements. It was scheduled to come out in Spring 2001. One segment focuses on Chip Norton at CWD. A grant from the New England WaterWorks Association funded EPA for

the creation of the video. CWD should utilize EPA's video to the fullest extent to encourage businesses to make significant improvements.

- b) CWD's water quality testing data should be used as part of the education program and linked to the CWD website.
- c) The CWD website could include a link to the real time data from the USGS Continuous Stations for stormwater outfall WA17, along with information on this project.
- d) Existing educational materials such as brochures, flyers, slide presentations, newsletters, etc. should be expanded or changed to include the suggestions and input from stakeholders voiced at the focus group meetings mentioned in 4.1.2 (above). These materials could be uploaded to the web as a new section for business visitors.

5. EVALUATION

This project has been very useful as far as it has gone. Data and maps generated by HDM will be very valuable to CWD as they continue to advocate for a healthy water supply. A plan is now in place to continue with the development of presentation materials and education approaches. Additional funding is imperative to follow the plan, revise the materials, produce the materials, and proceed with the actual – and very important – educational meetings that will result in improving businesses practices and enhancing or protecting the water quality of the drinking water supply in Cambridge.

6. RECOMMENDATIONS

In order to facilitate real change in Waltham's urban business district and protect Cambridge's water supply, it is important that this project receive funding for completion. The portions of the remaining project include carrying out the draft approach for communication and education spelled out in Section 4.1 and facilitating outreach to the business community to present the educational materials and recommend implementation of stormwater pollution prevention measures.

Based on the outcome of the various focus groups, Phase III – the implementation phase – needs to proceed with the development of the various components of the communication strategy. A graphic designer will be needed to produce designs for a brochure and any other presentation materials identified during the focus group meetings. The brochure will be 2-color, printed on recycled paper with soy-based inks. Additional presentation materials could be developed for use at a speaking program targeted to the various business groups which could complement and introduce the written materials. Chip Norton, CWD's Watershed Manager has spoken extensively on stormwater remediation and options for stormwater treatment. For example, it would be desirable to produce a conference-style, stand-alone, collapsible structural frame to which graphics and text will be attached. Such exhibits can be covered with felt, and the visual

components attached with velcro, so the exhibits can be updated and changed as needed for each target audience. With enough funding, an educational video could be produced for distribution or as part of the lunchtime talk. Alternatively, showings of the EPA video mentioned in section 4.1.6 could be arranged in conjunction with the speaking program.

In the final outreach phase, Phase IV, the first components (brochure, talk, and possibly an exhibit or video) will be taken into the Cambridge Reservoir subwatershed to the target audience. A press release should be produced announcing the availability of the exhibit. The exhibit should be delivered, set up, and restocked with brochures as needed. A lunchtime talk should be scheduled at various sites.

Establishing an ongoing relationship with businesses around the watershed will support and enhance the Cambridge Water Department's long-term goals of maintaining a viable drinking water source in a developed setting.

7. FINANCIAL SUMMARY

Charles River Watershed Association, Inc. 99-06 SWT/Source Water Protection Assistance/ Land Management Grant Project May 1, 2000 through September 30, 2001		
Revenue		
September 30, 2000	Invoice 811	10,738.08
November 30, 2000	Invoice 843	5,874.72
March 31, 2001	Invoice 915	7,058.40
October 1, 2000	Credit*	-53.92
	Total Earned Revenue:	23,617.28
10% State Retainage:		-2,367.12
October 1, 2000	Retainage Credit*	5.39
	Total Invoiced :	<u><u>21,250.16</u></u>
Expense		
	CRWA Personnel	3,680.78
	Outside Contractor	14,805.10
	Printing	22.58
	Supplies	27.76
	Travel	7.88
	Overhead	8,088.18
	Total Expense:	<u><u>26,632.28</u></u>
	Net of Revenue & Expenses:	-5,382.12
*Credit issued for items included on invoice 811 but not included in contract budget		

The project is over budget on the personnel expenses, but under budget on the outside contractor and overhead expenses. We would like to shift \$94.90 from the outside contractor budget and \$1,286.82 from the project overhead budget to the personnel expense budget. This amounts to a total shift of \$1,381.72 to personnel. CRWA will not invoice above the budgeted amount.

Appendix C contains copies of all invoices and a credit memo issued by CRWA to date. No additional invoices are expected.

APPENDIX A

**CAMBRIDGE WATERSHED SUB-BASIN MAPS
SUB-BASINS A AND B**

Note: One copy of the maps is included in the camera-ready copy of the Final Report submitted to DEP per verbal approval by Kathy Romero, DEP.

APPENDIX B

PARTIAL SAMPLE OF BUSINESS DATA COLLECTED

ID#	ADDRESS	BUSNAME	# Employ	OWNER	OWNMAIL1	OWNMAIL2
1	156 Candlewood Dr	Mark J Lanza	2 to 4			
2	59 Crestview Rd	Crestview Contracting	1			
3	2 Priscilla Ln	Insta Foam Products Inc	1			
4	53 Midland Dr	A Cardillo & Sons Inc	5 to 9			
5	43 Candlewood Dr	L J Gauvin & Sons	5 to 9			
6	1841 Trapelo Rd	Ads-Reservoir	100 to 249	HEALTH CARE PROPERTY / INVESTORS, INC.	SUITE 1200	LOS ANGELES,CA 90024
7	170 Tracer Ln	Boston Properties	1	TRACER LANE TRUST,, / LINDE, E. & ZUCKERMAN, M,TR,	800 BOYLSTON ST., 28TH FLOOR	BOSTON,MA 02199-8001
8	170 Tracer Ln 1	Tmp Worldwide	50 to 99			
9	1840 Trapelo Rd	Atrium Museum	1	ATRIUM MUSEUM, INC.	5 VENNER ROAD	ARLINGTON,MA 02476
10	84 Goldencrest Ave	Rexco Services	2 to 4			
11	35 Goldencrest Ave	Barsamian Floor Covering	2 to 4			
12	1 Leslie Rd	Partiot Airport Tmsprtn Svc	2 to 4			
13	200 Smith St	Boston Po Employee Cu	2 to 4	UNITED STATES POSTAL / SERVICE	6 GRIFFIN ROAD NORTH	WINDSOR,CT 06006
14	200 SMITH ST	(US) POSTAL SERVICE FAC		UNITED STATES POSTAL / SERVICE	6 GRIFFIN ROAD NORTH	WINDSOR,CT 06006
15	200 SMITH ST	HONEYWELL BULL		UNITED STATES POSTAL / SERVICE	6 GRIFFIN ROAD NORTH	WINDSOR,CT 06006
16	93 Copeland St	Access Credit Reporting	1			
17	17 Melody Ln	Pederson Livery Svc	2 to 4			
18	29 Christopher Rd	Media Sense Inc	1			
19	1601 Trapelo Rd	Network-1 Security Solutions	5 to 9	BOSTON PROP. L.L.C., / C/O BOSTON PROPERTIES, INC.,	800 BOYLSTON ST., 28TH FLOOR	BOSTON,MA 02199-8001
20	1601 Trapelo Rd	Fujitsu Communications Systems	10 to 24	BOSTON PROP. L.L.C., / C/O BOSTON PROPERTIES, INC.,	800 BOYLSTON ST., 28TH FLOOR	BOSTON,MA 02199-8001
21	1601 Trapelo Rd	Mld Investment Planning	2 to 4	BOSTON PROP. L.L.C., / C/O BOSTON PROPERTIES, INC.,	800 BOYLSTON ST., 28TH FLOOR	BOSTON,MA 02199-8001
22	1601 Trapelo Rd 46	F M Global	10 to 24			
23	1601 Trapelo Rd	Catapult Software Training Ctr	25 to 49	BOSTON PROP. L.L.C., / C/O BOSTON PROPERTIES, INC.,	800 BOYLSTON ST., 28TH FLOOR	BOSTON,MA 02199-8001
24	1601 Trapelo Rd	Cornerstone Financial Advisors	10 to 24	BOSTON PROP. L.L.C., / C/O BOSTON PROPERTIES, INC.,	800 BOYLSTON ST., 28TH FLOOR	BOSTON,MA 02199-8001
25	1601 Trapelo Rd 221	Metife 128 Alliance	10 to 24	BOSTON PROP. L.L.C., / C/O BOSTON PROPERTIES, INC.,	800 BOYLSTON ST., 28TH FLOOR	BOSTON,MA 02199-8001
26	1601 Trapelo Rd	Hornor Townsend & Kent	10 to 24	BOSTON PROP. L.L.C., / C/O BOSTON PROPERTIES, INC.,	800 BOYLSTON ST., 28TH FLOOR	BOSTON,MA 02199-8001
27	1601 Trapelo Rd 21	Hitachi America Ltd	2 to 4			
28	1601 Trapelo Rd	Kollmorgen Corp	5 to 9	BOSTON PROP. L.L.C., / C/O BOSTON PROPERTIES, INC.,	800 BOYLSTON ST., 28TH FLOOR	BOSTON,MA 02199-8001
29	1601 Trapelo Rd	Chartered Semiconductor Mfg	10 to 24	BOSTON PROP. L.L.C., / C/O BOSTON PROPERTIES, INC.,	800 BOYLSTON ST., 28TH FLOOR	BOSTON,MA 02199-8001
30	1601 Trapelo Rd	Wyko East	10 to 24	BOSTON PROP. L.L.C., / C/O BOSTON PROPERTIES, INC.,	800 BOYLSTON ST., 28TH FLOOR	BOSTON,MA 02199-8001
31	1601 Trapelo Rd	Life & Annuity Co	10 to 24	BOSTON PROP. L.L.C., / C/O BOSTON PROPERTIES, INC.,	800 BOYLSTON ST., 28TH FLOOR	BOSTON,MA 02199-8001
32	1601 Trapelo Rd	Radix Health Connection	5 to 9	BOSTON PROP. L.L.C., / C/O BOSTON PROPERTIES, INC.,	800 BOYLSTON ST., 28TH FLOOR	BOSTON,MA 02199-8001
33	1601 Trapelo Rd	Sullivan Risk Management Group	10 to 24	BOSTON PROP. L.L.C., / C/O BOSTON PROPERTIES, INC.,	800 BOYLSTON ST., 28TH FLOOR	BOSTON,MA 02199-8001
34	1601 TRAPELO RD	RESERVOIR PLACE ABC		BOSTON PROP. L.L.C., / C/O BOSTON PROPERTIES, INC.,	800 BOYLSTON ST., 28TH FLOOR	BOSTON,MA 02199-8001
35	1601 Trapelo Rd	Lucas Group	25 to 49	BOSTON PROP. L.L.C., / C/O BOSTON PROPERTIES, INC.,	800 BOYLSTON ST., 28TH FLOOR	BOSTON,MA 02199-8001
36	1601 Trapelo Rd	Information Resources Inc	100 to 249	BOSTON PROP. L.L.C., / C/O BOSTON PROPERTIES, INC.,	800 BOYLSTON ST., 28TH FLOOR	BOSTON,MA 02199-8001
37	1601 Trapelo Rd	Manchester/MC Assoc.	10 to 24	BOSTON PROP. L.L.C., / C/O BOSTON PROPERTIES, INC.,	800 BOYLSTON ST., 28TH FLOOR	BOSTON,MA 02199-8001
38	1601 Trapelo Rd	Tiger Investment Group Inc	5 to 9	BOSTON PROP. L.L.C., / C/O BOSTON PROPERTIES, INC.,	800 BOYLSTON ST., 28TH FLOOR	BOSTON,MA 02199-8001
39	1601 Trapelo Rd	Valor Computerized Systems	5 to 9	BOSTON PROP. L.L.C., / C/O BOSTON PROPERTIES, INC.,	800 BOYLSTON ST., 28TH FLOOR	BOSTON,MA 02199-8001

ID	ADDRESS	BUSNAME	# Employ	OWNER	OWNMAIL1	OWNMAIL2
40	1601 Trapelo Rd	C & A Ltd Inc	2 to 4	BOSTON PROP. L.L.C., / C/O BOSTON PROPERTIES, INC.,	800 BOYLSTON ST., 28TH FLOOR	BOSTON,MA 02199-8001
41	1601 Trapelo Rd	Eagle View Inc	5 to 9	BOSTON PROP. L.L.C., / C/O BOSTON PROPERTIES, INC.,	800 BOYLSTON ST., 28TH FLOOR	BOSTON,MA 02199-8001
42	1601 Trapelo Rd Fl 1	Cadapult Graphic Systems Inc	2 to 4	BOSTON PROP. L.L.C., / C/O BOSTON PROPERTIES, INC.,	800 BOYLSTON ST., 28TH FLOOR	BOSTON,MA 02199-8001
43	1601 Trapelo Rd	Straumann USA	10 to 24	BOSTON PROP. L.L.C., / C/O BOSTON PROPERTIES, INC.,	800 BOYLSTON ST., 28TH FLOOR	BOSTON,MA 02199-8001
44	1601 Trapelo Rd	Casewise Systems Inc	10 to 24	BOSTON PROP. L.L.C., / C/O BOSTON PROPERTIES, INC.,	800 BOYLSTON ST., 28TH FLOOR	BOSTON,MA 02199-8001
45	1601 Trapelo Rd	Donald Tofias & Co	5 to 9	BOSTON PROP. L.L.C., / C/O BOSTON PROPERTIES, INC.,	800 BOYLSTON ST., 28TH FLOOR	BOSTON,MA 02199-8001
46	1601 Trapelo Rd	Parexel International Corp	250 to 499	BOSTON PROP. L.L.C., / C/O BOSTON PROPERTIES, INC.,	800 BOYLSTON ST., 28TH FLOOR	BOSTON,MA 02199-8001
47	1601 Trapelo Rd	Bank Of America Mortgage	25 to 49	BOSTON PROP. L.L.C., / C/O BOSTON PROPERTIES, INC.,	800 BOYLSTON ST., 28TH FLOOR	BOSTON,MA 02199-8001
48	1601 Trapelo Rd Fl 3	Hitachi Computer Products	50 to 99	BOSTON PROP. L.L.C., / C/O BOSTON PROPERTIES, INC.,	800 BOYLSTON ST., 28TH FLOOR	BOSTON,MA 02199-8001
49	1601 Trapelo Rd	Morse Barnes-Brown & Pendleton	10 to 24	BOSTON PROP. L.L.C., / C/O BOSTON PROPERTIES, INC.,	800 BOYLSTON ST., 28TH FLOOR	BOSTON,MA 02199-8001
50	1601 Trapelo Rd	Metamor	25 to 49	BOSTON PROP. L.L.C., / C/O BOSTON PROPERTIES, INC.,	800 BOYLSTON ST., 28TH FLOOR	BOSTON,MA 02199-8001
51	1601 Trapelo Rd 231	Tech Environmental Inc	5 to 9	BOSTON PROP. L.L.C., / C/O BOSTON PROPERTIES, INC.,	800 BOYLSTON ST., 28TH FLOOR	BOSTON,MA 02199-8001
52	1601 Trapelo Rd Bldg C	Entex Information Svc	25 to 49			
53	1601 Trapelo Rd	First Colony Capital Inc	5 to 9	BOSTON PROP. L.L.C., / C/O BOSTON PROPERTIES, INC.,	800 BOYLSTON ST., 28TH FLOOR	BOSTON,MA 02199-8001
54	1601 Trapelo Rd 16	Fitcorp Health Center	2 to 4	BOSTON PROP. L.L.C., / C/O BOSTON PROPERTIES, INC.,	800 BOYLSTON ST., 28TH FLOOR	BOSTON,MA 02199-8001
55	1601 Trapelo Rd	Orthodox Christian Assistance	1	BOSTON PROP. L.L.C., / C/O BOSTON PROPERTIES, INC.,	800 BOYLSTON ST., 28TH FLOOR	BOSTON,MA 02199-8001
56	1601 Trapelo Rd	Sodexho Usa	10 to 24	BOSTON PROP. L.L.C., / C/O BOSTON PROPERTIES, INC.,	800 BOYLSTON ST., 28TH FLOOR	BOSTON,MA 02199-8001
57	1601 Trapelo Rd	Kaiba International Inc	5 to 9	BOSTON PROP. L.L.C., / C/O BOSTON PROPERTIES, INC.,	800 BOYLSTON ST., 28TH FLOOR	BOSTON,MA 02199-8001
58	1601 Trapelo Rd	Sylvan Tecnology Ctr	5 to 9	BOSTON PROP. L.L.C., / C/O BOSTON PROPERTIES, INC.,	800 BOYLSTON ST., 28TH FLOOR	BOSTON,MA 02199-8001
59	1601 Trapelo Rd 2	Aetna Financial Services	10 to 24	BOSTON PROP. L.L.C., / C/O BOSTON PROPERTIES, INC.,	800 BOYLSTON ST., 28TH FLOOR	BOSTON,MA 02199-8001
60	1601 Trapelo Rd	Electroglas Inc	10 to 24	BOSTON PROP. L.L.C., / C/O BOSTON PROPERTIES, INC.,	800 BOYLSTON ST., 28TH FLOOR	BOSTON,MA 02199-8001
61	1601 Trapelo Rd 4	Eds Personnel Communications	250 to 499			
62	1601 Trapelo Rd	Salem Five Savings Bank	2 to 4	BOSTON PROP. L.L.C., / C/O BOSTON PROPERTIES, INC.,	800 BOYLSTON ST., 28TH FLOOR	BOSTON,MA 02199-8001
63	1601 Trapelo Rd	Carleton Heffner Ewen Nashwaty	10 to 24	BOSTON PROP. L.L.C., / C/O BOSTON PROPERTIES, INC.,	800 BOYLSTON ST., 28TH FLOOR	BOSTON,MA 02199-8001
64	1601 Trapelo Rd 145	Logix Inc	25 to 49	BOSTON PROP. L.L.C., / C/O BOSTON PROPERTIES, INC.,	800 BOYLSTON ST., 28TH FLOOR	BOSTON,MA 02199-8001
65	1601 Trapelo Rd	Mass High Technology Council	2 to 4	BOSTON PROP. L.L.C., / C/O BOSTON PROPERTIES, INC.,	800 BOYLSTON ST., 28TH FLOOR	BOSTON,MA 02199-8001
66	1601 Trapelo Rd	Generics Group	5 to 9	BOSTON PROP. L.L.C., / C/O BOSTON PROPERTIES, INC.,	800 BOYLSTON ST., 28TH FLOOR	BOSTON,MA 02199-8001
67	1601 Trapelo Rd Fl 1	Garber Construction	5 to 9	BOSTON PROP. L.L.C., / C/O BOSTON PROPERTIES, INC.,	800 BOYLSTON ST., 28TH FLOOR	BOSTON,MA 02199-8001
68	1601 Trapelo Rd	Rts Inc	25 to 49	BOSTON PROP. L.L.C., / C/O BOSTON PROPERTIES, INC.,	800 BOYLSTON ST., 28TH FLOOR	BOSTON,MA 02199-8001
69	95 Berkeley St	Lesbian-Gay Political Alliance	2 to 4			
70	131 Berkley St	Accent Salon	1			
71	142 Berkeley St Fl 3	New England Arbitration	2 to 4			
72	222 Berkeley St 3748	Gentlemen's Choice	2 to 4			
73	222 Berkeley St 1640	Grant Associates	2 to 4			
74	222 Berkeley St 2150	Hlm Management Co	10 to 24			
75	229 Berkeley St	Newire	1			
76	222 Berkley St	American Express Corp Travel	5 to 9			
77	1560 Trapelo Rd	Am Pm Cleaning Corp	10 to 24	THE 1560 TRAPELO ROAD RLTY / TR., JOHN H. SMITH, TR.	1560 TRAPELO ROAD	WALTHAM,MA 02451-730
78	1560 Trapelo Rd	Eclipse Communications	10 to 24	THE 1560 TRAPELO ROAD RLTY / TR., JOHN H. SMITH, TR.	1560 TRAPELO ROAD	WALTHAM,MA 02451-730

ID	ADDRESS	BUSNAME	# Employ	OWNER	OWNMAIL1	OWNMAIL2
79	1560 TrapeLo Rd 7	Optimum Training Centers	5 to 9	THE 1560 TRAPELO ROAD RLTY / TR., JOHN H. SMITH, TR.	1560 TRAPELO ROAD	WALTHAM,MA 02451-730
80	76 Brewster Rd	R H Young Inc	1			
81	1455 TRAPELO RD	EXXON USA 33121		JGE ENTERPROSES, INC. / JOSEPH MOLA, JR.	1455 TRAPELO ROAD	WALTHAM,MA 02451-221
82	1455 TrapeLo Rd	Mola's Exxon	5 to 9	JGE ENTERPROSES, INC. / JOSEPH MOLA, JR.	1455 TRAPELO ROAD	WALTHAM,MA 02451-221
83	1450 TrapeLo Rd	Community Church-The Nazarene	1	CHURCH OF THE NAZARENE / OF WALTHAM	18 BEAL ROAD	WALTHAM,MA 02453-664
84	1450 TrapeLo Rd	Community Day Care Ctr	10 to 24	CHURCH OF THE NAZARENE / OF WALTHAM	18 BEAL ROAD	WALTHAM,MA 02453-664
85	404 Wyman St	People Soft Inc	250 to 499	404 WYMAN STREET ASSOCIATES	225 WYMAN STREET	WALTHAM,MA 02451-120
86	404 WYMAN ST	MIDDLESEX MUTUAL TRU		404 WYMAN STREET ASSOCIATES	225 WYMAN STREET	WALTHAM,MA 02451-120
87	404 WYMAN ST	HOBBS BROOK OFFICE		404 WYMAN STREET ASSOCIATES	225 WYMAN STREET	WALTHAM,MA 02451-120
88	404 WYMAN ST	MIDDLESEX MUTUAL TRU		404 WYMAN STREET ASSOCIATES	225 WYMAN STREET	WALTHAM,MA 02451-120
89	404 Wyman St 365	Abs Ventures Ltd Partnership	2 to 4	404 WYMAN STREET ASSOCIATES	225 WYMAN STREET	WALTHAM,MA 02451-120
90	404 Wyman St 1	Ibm Corp	500 to 999	404 WYMAN STREET ASSOCIATES	225 WYMAN STREET	WALTHAM,MA 02451-120
91	Po Box 9124	Central Insurance Co	25 to 49			
92	404 Wyman St 100	Oce Business Systems Inc	25 to 49	404 WYMAN STREET ASSOCIATES	225 WYMAN STREET	WALTHAM,MA 02451-120
93	404 Wyman St 320	Ca Platinum Technology	50 to 99	404 WYMAN STREET ASSOCIATES	225 WYMAN STREET	WALTHAM,MA 02451-120
94	404 Wyman St 300	Fujitsu Business Communication	25 to 49	404 WYMAN STREET ASSOCIATES	225 WYMAN STREET	WALTHAM,MA 02451-120
95	404 Wyman St	American Management Svc	100 to 249	404 WYMAN STREET ASSOCIATES	225 WYMAN STREET	WALTHAM,MA 02451-120
96	404 Wyman St 330	Total Insurance Concepts Agcy	5 to 9	404 WYMAN STREET ASSOCIATES	225 WYMAN STREET	WALTHAM,MA 02451-120
97	404 Wyman St	Lexmark International	10 to 24	404 WYMAN STREET ASSOCIATES	225 WYMAN STREET	WALTHAM,MA 02451-120
98	404 Wyman St	Fabric Cleaners	1	404 WYMAN STREET ASSOCIATES	225 WYMAN STREET	WALTHAM,MA 02451-120
99	404 Wyman St	Secur-Planning	2 to 4	404 WYMAN STREET ASSOCIATES	225 WYMAN STREET	WALTHAM,MA 02451-120
100	404 Wyman St	Dodge Group	50 to 99	404 WYMAN STREET ASSOCIATES	225 WYMAN STREET	WALTHAM,MA 02451-120
101	1100 Winter St 4800	Private Health Care Systems	500 to 999	SRI TWO REALTY TRUST, BAY, / COLONY CORP. CTR, LLC.,	555 CALIFORNIA ST	SAN FRANCISCO,CA 94104
102	1100 Winter St 2300	Upstate Biotechnology Inc	10 to 24	SRI TWO REALTY TRUST, BAY, / COLONY CORP. CTR, LLC.,	555 CALIFORNIA ST	SAN FRANCISCO,CA 94104
103	1100 Winter St 4600	Marketing & Planning Systems, Inc.	50 to 99	SRI TWO REALTY TRUST, BAY, / COLONY CORP. CTR, LLC.,	555 CALIFORNIA ST	SAN FRANCISCO,CA 94104
104	1100 Winter St 4650	Decision Resources, Inc.	100 to 249	SRI TWO REALTY TRUST, BAY, / COLONY CORP. CTR, LLC.,	555 CALIFORNIA ST	SAN FRANCISCO,CA 94104
105	1100 Winter St	Shorenstein Co	2 to 4	SRI TWO REALTY TRUST, BAY, / COLONY CORP. CTR, LLC.,	555 CALIFORNIA ST	SAN FRANCISCO,CA 94104
106	1100 Winter St	Corporate Chef's Inc	5 to 9	SRI TWO REALTY TRUST, BAY, / COLONY CORP. CTR, LLC.,	555 CALIFORNIA ST	SAN FRANCISCO,CA 94104
107	686 LINCOLN ST	MURPHYS WASTE OIL SERVICE		MURPHY, DEBORAH A., / C/O DEBORAH A. MURPHY,	686 LINCOLN ST	WALTHAM,MA 02451-218
108	686 Lincoln St	Prime Selection Inc	5 to 9	MURPHY, DEBORAH A., / C/O DEBORAH A. MURPHY,	686 LINCOLN ST	WALTHAM,MA 02451-218
109	275 Wyman St	Ram Communications	50 to 99	TWO SEVENTY FIVE WYMAN ST., / TRUST; GILBERT, RODDY	225 WYMAN STREET	WALTHAM,MA 02451-120
110	275 Wyman St	Clinical Networx Inc	5 to 9	TWO SEVENTY FIVE WYMAN ST., / TRUST; GILBERT, RODDY	225 WYMAN STREET	WALTHAM,MA 02451-120
111	275 Wyman St 250	Coca-Cola Usa	10 to 24	TWO SEVENTY FIVE WYMAN ST., / TRUST; GILBERT, RODDY	225 WYMAN STREET	WALTHAM,MA 02451-120
112	275 Wyman St 140	Northrup Grumman Corp	2 to 4	TWO SEVENTY FIVE WYMAN ST., / TRUST; GILBERT, RODDY	225 WYMAN STREET	WALTHAM,MA 02451-120
113	275 Wyman St 200	Global Enterprise Technologies	2 to 4	TWO SEVENTY FIVE WYMAN ST., / TRUST; GILBERT, RODDY	225 WYMAN STREET	WALTHAM,MA 02451-120
114	303 Wyman St	Altarex Corp	25 to 49			
115	303 Wyman St 205	Applied Marketing Science	10 to 24			
116	303 Wyman St 125	Alta Rex Corp	10 to 24			
117	1000 Winter St 4300	Primark Corp	25 to 49	SRI TWO REALTY TRUST, BAY, / BAY COLONY CORP. CTR. LL	555 CALIFORNIA STREET	SAN FRANCISCO,CA 94104

ID	ADDRESS	BUSNAME	# Employ	OWNER	OWNMAIL1	OWNMAIL2
118	1000 Winter St 1500	Shorenstein Co	5 to 9	SRI TWO REALTY TRUST, BAY, / BAY COLONY CORP. CTR. LL	555 CALIFORNIA STREET	SAN FRANCISCO,CA 94104
119	1000 Winter St 3900	Oak Industries Inc	25 to 49	SRI TWO REALTY TRUST, BAY, / BAY COLONY CORP. CTR. LL	555 CALIFORNIA STREET	SAN FRANCISCO,CA 94104
120	1000 Winter St 3350	Polaris Venture Partners	10 to 24	SRI TWO REALTY TRUST, BAY, / BAY COLONY CORP. CTR. LL	555 CALIFORNIA STREET	SAN FRANCISCO,CA 94104
121	1000 Winter St 4500	Matrix Partners	10 to 24	SRI TWO REALTY TRUST, BAY, / BAY COLONY CORP. CTR. LL	555 CALIFORNIA STREET	SAN FRANCISCO,CA 94104
122	1000 Winter St	Leonard L Faber Inc	10 to 24	SRI TWO REALTY TRUST, BAY, / BAY COLONY CORP. CTR. LL	555 CALIFORNIA STREET	SAN FRANCISCO,CA 94104
123	1000 Winter St 1100	Aberlyn Capital Management Co	2 to 4	SRI TWO REALTY TRUST, BAY, / BAY COLONY CORP. CTR. LL	555 CALIFORNIA STREET	SAN FRANCISCO,CA 94104
124	1000 Winter St 4550	Ira M Shoolman	2 to 4	SRI TWO REALTY TRUST, BAY, / BAY COLONY CORP. CTR. LL	555 CALIFORNIA STREET	SAN FRANCISCO,CA 94104
125	1050 Winter St Fl 1	Ten Fold	5 to 9	SRI TWO REALTY TRUST, BAY, / COLONY CORP. CTR, LLC.,	555 CALIFORNIA ST	SAN FRANCISCO,CA 94104
126	1000 Winter St 3200	Mci Worldcom Advanced Network	25 to 49	SRI TWO REALTY TRUST, BAY, / BAY COLONY CORP. CTR. LL	555 CALIFORNIA STREET	SAN FRANCISCO,CA 94104
127	1000 Winter St 1000	Seaflower Ventures, Inc.	2 to 4	SRI TWO REALTY TRUST, BAY, / BAY COLONY CORP. CTR. LL	555 CALIFORNIA STREET	SAN FRANCISCO,CA 94104
128	1000 Winter St 1050	Bright Horizons Children's Ctr	10 to 24	SRI TWO REALTY TRUST, BAY, / BAY COLONY CORP. CTR. LL	555 CALIFORNIA STREET	SAN FRANCISCO,CA 94104
129	1000 Winter St 1200	Business Systems Resources	25 to 49	SRI TWO REALTY TRUST, BAY, / BAY COLONY CORP. CTR. LL	555 CALIFORNIA STREET	SAN FRANCISCO,CA 94104
130	1000 Winter St	Corporate Chef's Inc	5 to 9	SRI TWO REALTY TRUST, BAY, / BAY COLONY CORP. CTR. LL	555 CALIFORNIA STREET	SAN FRANCISCO,CA 94104
131	1000 Winter St 3100	Nortel Networks	250 to 499	SRI TWO REALTY TRUST, BAY, / BAY COLONY CORP. CTR. LL	555 CALIFORNIA STREET	SAN FRANCISCO,CA 94104
132	1000 Winter St 3400	Nichimen America Inc	2 to 4	SRI TWO REALTY TRUST, BAY, / BAY COLONY CORP. CTR. LL	555 CALIFORNIA STREET	SAN FRANCISCO,CA 94104
133	1000 Winter St 4650	Gervais Carew & Dick	2 to 4	SRI TWO REALTY TRUST, BAY, / BAY COLONY CORP. CTR. LL	555 CALIFORNIA STREET	SAN FRANCISCO,CA 94104
134	1000 Winter St	Unilever	5 to 9	SRI TWO REALTY TRUST, BAY, / BAY COLONY CORP. CTR. LL	555 CALIFORNIA STREET	SAN FRANCISCO,CA 94104
135	1000 Winter St	W T Chen & Co, Inc.	10 to 24	SRI TWO REALTY TRUST, BAY, / BAY COLONY CORP. CTR. LL	555 CALIFORNIA STREET	SAN FRANCISCO,CA 94104
136	1000 Winter St 1600	Boston Biomed Consultants	10 to 24	SRI TWO REALTY TRUST, BAY, / BAY COLONY CORP. CTR. LL	555 CALIFORNIA STREET	SAN FRANCISCO,CA 94104
137	275 Wyman St 150	Lexington Investment Group	2 to 4	TWO SEVENTY FIVE WYMAN ST., / TRUST; GILBERT, RODDY	225 WYMAN STREET	WALTHAM,MA 02451-120
138	275 Wyman St	Nissho Iwai American Corp	1	TWO SEVENTY FIVE WYMAN ST., / TRUST; GILBERT, RODDY	225 WYMAN STREET	WALTHAM,MA 02451-120
139	275 Wyman St	Rtj Corp	10 to 24	TWO SEVENTY FIVE WYMAN ST., / TRUST; GILBERT, RODDY	225 WYMAN STREET	WALTHAM,MA 02451-120
140	275 Wyman St 14	Rent Grow	25 to 49	TWO SEVENTY FIVE WYMAN ST., / TRUST; GILBERT, RODDY	225 WYMAN STREET	WALTHAM,MA 02451-120
141	1050 Winter St 1600	Lawson Software	25 to 49	SRI TWO REALTY TRUST, BAY, / COLONY CORP. CTR, LLC.,	555 CALIFORNIA ST	SAN FRANCISCO,CA 94104
142	1050 Winter St	Broadview International	5 to 9	SRI TWO REALTY TRUST, BAY, / COLONY CORP. CTR, LLC.,	555 CALIFORNIA ST	SAN FRANCISCO,CA 94104
143	275 Wyman St	Xerox	10 to 24	TWO SEVENTY FIVE WYMAN ST., / TRUST; GILBERT, RODDY	225 WYMAN STREET	WALTHAM,MA 02451-120
144	275 Wyman St 150	Bbf Corp	2 to 4	TWO SEVENTY FIVE WYMAN ST., / TRUST; GILBERT, RODDY	225 WYMAN STREET	WALTHAM,MA 02451-120
145	275 Wyman St 270	Granahan Investment Mgmt Inc	10 to 24	TWO SEVENTY FIVE WYMAN ST., / TRUST; GILBERT, RODDY	225 WYMAN STREET	WALTHAM,MA 02451-120
146	275 Wyman St 130	Mobilecomm	50 to 99	TWO SEVENTY FIVE WYMAN ST., / TRUST; GILBERT, RODDY	225 WYMAN STREET	WALTHAM,MA 02451-120
147	275 Wyman St 110	Marketing Decisions Inc	25 to 49	TWO SEVENTY FIVE WYMAN ST., / TRUST; GILBERT, RODDY	225 WYMAN STREET	WALTHAM,MA 02451-120
148	275 WYMAN ST	FOSTER MEDICAL SUPPLY INC		TWO SEVENTY FIVE WYMAN ST., / TRUST; GILBERT, RODDY	225 WYMAN STREET	WALTHAM,MA 02451-120
149	275 WYMAN ST	FOSTER MEDICAL SUPPLY INC		TWO SEVENTY FIVE WYMAN ST., / TRUST; GILBERT, RODDY	225 WYMAN STREET	WALTHAM,MA 02451-120
150	275 WYMAN ST	FOSTER MEDICAL SUPPLY INC		TWO SEVENTY FIVE WYMAN ST., / TRUST; GILBERT, RODDY	225 WYMAN STREET	WALTHAM,MA 02451-120
151	275 WYMAN ST	FOSTER MEDICAL SUPPLY INC		TWO SEVENTY FIVE WYMAN ST., / TRUST; GILBERT, RODDY	225 WYMAN STREET	WALTHAM,MA 02451-120
152	275 WYMAN ST	FOSTER MEDICAL SUPPLY INC		TWO SEVENTY FIVE WYMAN ST., / TRUST; GILBERT, RODDY	225 WYMAN STREET	WALTHAM,MA 02451-120
153	275 WYMAN ST	FOSTER MEDICAL SUPPLY INC		TWO SEVENTY FIVE WYMAN ST., / TRUST; GILBERT, RODDY	225 WYMAN STREET	WALTHAM,MA 02451-120
154	235 Wyman St 200	Xerox Corporation	500 to 999			
155	235 Wyman St 110	Composite Design Technologies	10 to 24			
156	950 Winter St	Winter, Wyman & Co.	5 to 9	SRI TWO REALTY TRUST, BAY, / COLONY CORP. CTR, LLC.,	555 CALIFORNIA ST	SAN FRANCISCO,CA 94104

ID	ADDRESS	BUSNAME	# Employ	OWNER	OWNMAIL1	OWNMAIL2
157 950	Winter St	Northbridge Group	10 to 24	SRI TWO REALTY TRUST, BAY, / COLONY CORP. CTR, LLC.,	555 CALIFORNIA ST	SAN FRANCISCO,CA 9410
158 950	Winter St	Corporate Chef's Inc	2 to 4	SRI TWO REALTY TRUST, BAY, / COLONY CORP. CTR, LLC.,	555 CALIFORNIA ST	SAN FRANCISCO,CA 9410
159 950	Winter St 1400	Pentad	25 to 49	SRI TWO REALTY TRUST, BAY, / COLONY CORP. CTR, LLC.,	555 CALIFORNIA ST	SAN FRANCISCO,CA 9410
160 950	Winter St	Edify Corp	10 to 24	SRI TWO REALTY TRUST, BAY, / COLONY CORP. CTR, LLC.,	555 CALIFORNIA ST	SAN FRANCISCO,CA 9410
161 950	Winter St 3100	Winter Wyman & Co	100 to 249	SRI TWO REALTY TRUST, BAY, / COLONY CORP. CTR, LLC.,	555 CALIFORNIA ST	SAN FRANCISCO,CA 9410
162 950	Winter St 2300	Plaut Consulting	100 to 249	SRI TWO REALTY TRUST, BAY, / COLONY CORP. CTR, LLC.,	555 CALIFORNIA ST	SAN FRANCISCO,CA 9410
163 950	Winter St 1400	National Association-Educators	1	SRI TWO REALTY TRUST, BAY, / COLONY CORP. CTR, LLC.,	555 CALIFORNIA ST	SAN FRANCISCO,CA 9410
164 950	Winter St	Micro Financial Inc	2 to 4	SRI TWO REALTY TRUST, BAY, / COLONY CORP. CTR, LLC.,	555 CALIFORNIA ST	SAN FRANCISCO,CA 9410
165 950	Winter St	Syskoplan Consulting Inc	5 to 9	SRI TWO REALTY TRUST, BAY, / COLONY CORP. CTR, LLC.,	555 CALIFORNIA ST	SAN FRANCISCO,CA 9410
166 950	Winter St	American Express Financial Adv	5 to 9	SRI TWO REALTY TRUST, BAY, / COLONY CORP. CTR, LLC.,	555 CALIFORNIA ST	SAN FRANCISCO,CA 9410
167 950	Winter St	Sap America	250 to 499	SRI TWO REALTY TRUST, BAY, / COLONY CORP. CTR, LLC.,	555 CALIFORNIA ST	SAN FRANCISCO,CA 9410
168 950	Winter St 4400	Salomon Smith Barney	50 to 99	SRI TWO REALTY TRUST, BAY, / COLONY CORP. CTR, LLC.,	555 CALIFORNIA ST	SAN FRANCISCO,CA 9410
169 950	Winter St 1400	Franklin E Peters Actuary	1	SRI TWO REALTY TRUST, BAY, / COLONY CORP. CTR, LLC.,	555 CALIFORNIA ST	SAN FRANCISCO,CA 9410
170 950	Winter St	Lincoln Financial Advisors	10 to 24	SRI TWO REALTY TRUST, BAY, / COLONY CORP. CTR, LLC.,	555 CALIFORNIA ST	SAN FRANCISCO,CA 9410
171 950	Winter St 3300	O'Neill & Neylon	5 to 9	SRI TWO REALTY TRUST, BAY, / COLONY CORP. CTR, LLC.,	555 CALIFORNIA ST	SAN FRANCISCO,CA 9410
172	Po Box 9198	Twinbrook Federal Credit Union	10 to 24			
173 225	Wyman St	Hobbs Brook Office Park	50 to 99	275 WYMAN ST REALTY TR, / THOMAS M. DUSEL, ROBERT J.	225 WYMAN ST.	WALTHAM,MA 02451-120
174 225	WYMAN ST	404 WYMAN ST		275 WYMAN ST REALTY TR, / THOMAS M. DUSEL, ROBERT J.	225 WYMAN ST.	WALTHAM,MA 02451-120
175 225	WYMAN ST	MIDDLESEX MUTUAL TRU		275 WYMAN ST REALTY TR, / THOMAS M. DUSEL, ROBERT J.	225 WYMAN ST.	WALTHAM,MA 02451-120
176	Po Box 9198	Arkwright Insurance	250 to 499			
177 1000	Winter St	Sterling Software Inc	5 to 9	SRI TWO REALTY TRUST, BAY, / BAY COLONY CORP. CTR. LL	555 CALIFORNIA STREET	SAN FRANCISCO,CA 94104
178 950	Winter St	Mutual Of New York	10 to 24	SRI TWO REALTY TRUST, BAY, / COLONY CORP. CTR, LLC.,	555 CALIFORNIA ST	SAN FRANCISCO,CA 9410
179 950	Winter St 1300	New England Financial Advisors	10 to 24	SRI TWO REALTY TRUST, BAY, / COLONY CORP. CTR, LLC.,	555 CALIFORNIA ST	SAN FRANCISCO,CA 9410
180 950	Winter St 4100	Leasecomm Corp	100 to 249	SRI TWO REALTY TRUST, BAY, / COLONY CORP. CTR, LLC.,	555 CALIFORNIA ST	SAN FRANCISCO,CA 9410
181 950	Winter St	Sagemark Consulting Inc	2 to 4	SRI TWO REALTY TRUST, BAY, / COLONY CORP. CTR, LLC.,	555 CALIFORNIA ST	SAN FRANCISCO,CA 9410
182 950	Winter St 4600	North Bridge Venture Partners	10 to 24	SRI TWO REALTY TRUST, BAY, / COLONY CORP. CTR, LLC.,	555 CALIFORNIA ST	SAN FRANCISCO,CA 9410
183 1000	Winter St 4900	Jennison Associates Capital	10 to 24	SRI TWO REALTY TRUST, BAY, / BAY COLONY CORP. CTR. LL	555 CALIFORNIA STREET	SAN FRANCISCO,CA 94104
184 1000	Winter St 4800	Pacific Life	2 to 4	SRI TWO REALTY TRUST, BAY, / BAY COLONY CORP. CTR. LL	555 CALIFORNIA STREET	SAN FRANCISCO,CA 94104
185 920	Winter St	Polaroid Corp	1,000 to 2,49			
186 81	WYMAN ST	KFX THERMO		THERMO ELECTRON CORPORATION, / 81 WYMAN STREET,	P.O. BOX 9046	WALTHAM,MA 02454
187	Po Box 9046	Thermo Spectra Corp	2 to 4			
188	Po Box 9046	Thermo Terratech Inc	100 to 249			
189 81	Wyman St	Thermo Electron Corp	100 to 249	THERMO ELECTRON CORPORATION, / 81 WYMAN STREET,	P.O. BOX 9046	WALTHAM,MA 02454
190	Po Box 9046	Thermo Power Corp	100 to 249			
191 81	Wyman St	Trex Medical Corp	50 to 99	THERMO ELECTRON CORPORATION, / 81 WYMAN STREET,	P.O. BOX 9046	WALTHAM,MA 02454
192 868	WINTER ST	POLAROID CORP		POLAROID CORPORATION, / JOSEPHINE PARATORE,	920 WINTER ST, R1-1	WALTHAM,MA 02451
193 868	WINTER ST	POLAROID CORP		POLAROID CORPORATION, / JOSEPHINE PARATORE,	920 WINTER ST, R1-1	WALTHAM,MA 02451
194 868	WINTER ST	POLAROID CORP		POLAROID CORPORATION, / JOSEPHINE PARATORE,	920 WINTER ST, R1-1	WALTHAM,MA 02451
195 880	Winter St Bldg 4	Bmc Software Inc	250 to 499	880 WINTER STREET, LLC / % LEGGET MCCALL PROPERTIES	10 POST OFFICE SQUARE	BOSTON,MA 02109

ID	ADDRESS	BUSNAME	# Employ	OWNER	OWNMAIL1	OWNMAIL2
196	235 Wyman St	Quality Profiles Intl	2 to 4	MIDDLESEX MUTUAL BLDG TRUST / HOLLINGSWORTH, AMO	225 WYMAN ST.	WALTHAM,MA 02451-120
197	343 Winter St	Smithkline Beecham Clncl Lab	250 to 499	THERMO ELECTRON CORP., /	81 WYMAN STREET	WALTHAM,MA 02451
198	40 Sylvan St	Unified Federal Credit Union	1			
199	40 Sylvan Rd	Gte Laboratories Inc	500 to 999	GTE LABORATORIES, INC. / C/O GTE LABORATORIES, INC.	40 SYLVAN ROAD	WALTHAM,MA 02451-112
200	385 Winter St	Thackery's Table & Tap	50 to 99	WINTER ST. TRUST, GILBERT., / ARTHUR & RALPH, TRUSTEES	103 HUNNEWELL AVENUE	NEWTON,MA 02458
201	385 Winter St	Susse Chalet		WINTER ST. TRUST, GILBERT., / ARTHUR & RALPH, TRUSTEES	103 HUNNEWELL AVENUE	NEWTON,MA 02458
201	385 Winter St	Susse Chalet		WINTER ST. TRUST, GILBERT., / ARTHUR & RALPH, TRUSTEES	103 HUNNEWELL AVENUE	NEWTON,MA 02458
201	385 Winter St 2	Susse Chalet	50 to 99	WINTER ST. TRUST, GILBERT., / ARTHUR & RALPH, TRUSTEES	103 HUNNEWELL AVENUE	NEWTON,MA 02458
202	475 Winter St 2	Copy Cop	10 to 24			
203	475 Winter St	Green Papaya	10 to 24			
204	475 Winter St	Gourmet Bagel	10 to 24			
205	475 Winter St	Signature Kitchens	5 to 9			
206	475 Winter St	Metrocall Inc	25 to 49			
207	475 Winter St	Cathy's Beauty Salon	5 to 9			
208	475 Winter St	Bertucci's Brick Oven Pizzeria	50 to 99			
209	475 Winter St	Children's Workshop	10 to 24			
210	475 Winter St	Marketing East Corp	2 to 4			
211	550 WINTER ST	FRUEHAUF FACTORY BRANCH		WALTHAM GQ ASSOCIATES, / C/O VARI PATEL,	755 CROSSOVER LANE	MEMPHIS,OTN 38117-490
212	580 WINTER ST	GENERAL COMPUTER				
213	580 WINTER ST	HOSPITAL ELECTRONICS INC				
214	550 Winter St	Hertz Rent A Car	1	WALTHAM GQ ASSOCIATES, / C/O VARI PATEL,	755 CROSSOVER LANE	MEMPHIS,OTN 38117-490
215	520 WINTER ST	WHITTAKER YARDNEY POWER S		COSTCO WHOLESALE CORP. / ATTN: EXCISE TAX DEPT. #308	999 LAKE DRIVE	ISSAQUAH,WA 98027
216	520 WINTER ST	COSTCO WHOLESALE NO 308		COSTCO WHOLESALE CORP. / ATTN: EXCISE TAX DEPT. #308	999 LAKE DRIVE	ISSAQUAH,WA 98027
217	580 Winter St	North American Philips Lghtng	10 to 24			
218	475 Winter St	Oba Japanese Restaurant	2 to 4			
219	475 Winter St	Imagination Station	10 to 24			
220	520 Winter St	Lexington Vision Care	2 to 4	COSTCO WHOLESALE CORP. / ATTN: EXCISE TAX DEPT. #308	999 LAKE DRIVE	ISSAQUAH,WA 98027
221	520 Winter St	Price Costco	100 to 249	COSTCO WHOLESALE CORP. / ATTN: EXCISE TAX DEPT. #308	999 LAKE DRIVE	ISSAQUAH,WA 98027
222	550 Winter St	Doubletree Guest Suites	100 to 249	WALTHAM GQ ASSOCIATES, / C/O VARI PATEL,	755 CROSSOVER LANE	MEMPHIS,TN 38117-4900
223	550 Winter St	Grille At Hobbs Brook	25 to 49	WALTHAM GQ ASSOCIATES, / C/O VARI PATEL,	755 CROSSOVER LANE	MEMPHIS,OTN 38117-490
224	45 1ST AVE	TELCOGEN		ATLANTIC-WALTHAM REALTY., / LLC,	205 NEWBURY STREET	FRAMINGHAM,MA 01701
225	45 1ST AVE	THERMO ELECTRON CORP		ATLANTIC-WALTHAM REALTY., / LLC,	205 NEWBURY STREET	FRAMINGHAM,MA 01701
226	45 1ST AVE	TECOGEN - DIV OF THERMAL PO		ATLANTIC-WALTHAM REALTY., / LLC,	205 NEWBURY STREET	FRAMINGHAM,MA 01701
227	81 Wyman St	THERMO ELECTRON CORP		THERMO ELECTRON CORPORATION, / 81 WYMAN STREET,	P.O. BOX 9046	WALTHAM,MA 02454
228	81 Wyman St	THERMOLYTE		THERMO ELECTRON CORPORATION, / 81 WYMAN STREET,	P.O. BOX 9046	WALTHAM,MA 02454
229	70 3rd Ave	Weston	250 to 499	STARWOOD WALTHAM CMBS 1 LLC., /	2231 E. CAMELBACK #400	PHOENIX,AZ 85016
230	75 3rd Ave	Allegra Print & Imaging	1	75 THIRD AVE LMTD PTN, / C/O THE NELSON COMPANIES,	230 THIRD AVE	WALTHAM,MA 02451-752
231	75 3rd Ave	D'Angelo Sandwich Shop	10 to 24	75 THIRD AVE LMTD PTN, / C/O THE NELSON COMPANIES,	230 THIRD AVE	WALTHAM,MA 02451-752
232	75 3rd Ave	Coffee & More	2 to 4	75 THIRD AVE LMTD PTN, / C/O THE NELSON COMPANIES,	230 THIRD AVE	WALTHAM,MA 02451-752

ID	ADDRESS	BUSNAME	# Employ	OWNER	OWNMAIL1	OWNMAIL2
233 75 3rd Ave	Di Re Hair Ltd		10 to 24	75 THIRD AVE LMTD PTN, / C/O THE NELSON COMPANIES,	230 THIRD AVE	WALTHAM,MA 02451-752
234 75 3rd Ave	Corner Cleaners		1	75 THIRD AVE LMTD PTN, / C/O THE NELSON COMPANIES,	230 THIRD AVE	WALTHAM,MA 02451-752
235 75 3rd Ave	Franklin Pierce Assoc		5 to 9	75 THIRD AVE LMTD PTN, / C/O THE NELSON COMPANIES,	230 THIRD AVE	WALTHAM,MA 02451-752
236 75 3rd Ave 7	Franklin Pierce Temporaries		2 to 4	75 THIRD AVE LMTD PTN, / C/O THE NELSON COMPANIES,	230 THIRD AVE	WALTHAM,MA 02451-752
237 70 3RD AVE	WESTON HOTEL			STARWOOD WALTHAM CMBS I LLC., /,	2231 E. CAMELBACK #400	PHOENIX,AZ 85016
238 70 3rd Ave	Total Audio Visual Svc		5 to 9	STARWOOD WALTHAM CMBS I LLC., /,	2231 E. CAMELBACK #400	PHOENIX,AZ 85016
239 70 3rd Ave	Clark & White Car Rental		5 to 9	STARWOOD WALTHAM CMBS I LLC., /,	2231 E. CAMELBACK #400	PHOENIX,AZ 85016
240 60 1st Ave	CNI			MCMILLEN REAL ESTATE LTD. / PTNSHP., BRUCE GURALL &	ONE MAIN STREET	CONCORD,MA 01742
240 60 1st Ave	Arlington News Co		10 to 24	MCMILLEN REAL ESTATE LTD. / PTNSHP., BRUCE GURALL &	ONE MAIN STREET	CONCORD,MA 01742
241 45 1st Ave	Thermo Lyte Corp		25 to 49	ATLANTIC-WALTHAM REALTY., / LLC,	205 NEWBURY STREET	FRAMINGHAM,MA 01701
242 40 2ND AVE	A D P NETWORK SERVICES			WALTHAM 40 LLC, / % EAGILL RIDGE PARTNERS ,LLC,	165 S.UNION BLVD. STE.500	LAKEWOOD,CO 80228
243 40 2nd Ave 200	Surgery Center Of Waltham		1	WALTHAM 40 LLC, / % EAGILL RIDGE PARTNERS ,LLC,	165 S.UNION BLVD. STE.500	LAKEWOOD,CO 80228
244 40 2nd Ave 500	Dental Associates-New England		10 to 24	WALTHAM 40 LLC, / % EAGILL RIDGE PARTNERS ,LLC,	165 S.UNION BLVD. STE.500	LAKEWOOD,CO 80228
245 40 2nd Ave 340	Pediatric Gastroenterology		unknown	WALTHAM 40 LLC, / % EAGILL RIDGE PARTNERS ,LLC,	165 S.UNION BLVD. STE.500	LAKEWOOD,CO 80228
246 40 2nd Ave 510	Children's Strabismus Ctr		5 to 9	WALTHAM 40 LLC, / % EAGILL RIDGE PARTNERS ,LLC,	165 S.UNION BLVD. STE.500	LAKEWOOD,CO 80228
247 40 2nd Ave 340	Pediatric Gastroenterology		unknown	WALTHAM 40 LLC, / % EAGILL RIDGE PARTNERS ,LLC,	165 S.UNION BLVD. STE.500	LAKEWOOD,CO 80228
248 40 2nd Ave 300	Ma Gen Hosp Pediatric Surgery		2 to 4	WALTHAM 40 LLC, / % EAGILL RIDGE PARTNERS ,LLC,	165 S.UNION BLVD. STE.500	LAKEWOOD,CO 80228
249 40 2nd Ave 170	New England Diabetes		5 to 9	WALTHAM 40 LLC, / % EAGILL RIDGE PARTNERS ,LLC,	165 S.UNION BLVD. STE.500	LAKEWOOD,CO 80228
250 40 2nd Ave	Beal Co		2 to 4	WALTHAM 40 LLC, / % EAGILL RIDGE PARTNERS ,LLC,	165 S.UNION BLVD. STE.500	LAKEWOOD,CO 80228
251 40 2nd Ave 340	Pediatric Gastroenterology		unknown	WALTHAM 40 LLC, / % EAGILL RIDGE PARTNERS ,LLC,	165 S.UNION BLVD. STE.500	LAKEWOOD,CO 80228
252 40 2nd Ave 520	Pregnancy Environmental Hlth		2 to 4	WALTHAM 40 LLC, / % EAGILL RIDGE PARTNERS ,LLC,	165 S.UNION BLVD. STE.500	LAKEWOOD,CO 80228
253 40 2nd Ave 340	Pediatric Gastroenterology		10 to 24	WALTHAM 40 LLC, / % EAGILL RIDGE PARTNERS ,LLC,	165 S.UNION BLVD. STE.500	LAKEWOOD,CO 80228
254 40 2nd Ave 100	Boston Univ Pediatric Radiology		5 to 9	WALTHAM 40 LLC, / % EAGILL RIDGE PARTNERS ,LLC,	165 S.UNION BLVD. STE.500	LAKEWOOD,CO 80228
255 40 2nd Ave	Behavioral Medicine Practice		2 to 4	WALTHAM 40 LLC, / % EAGILL RIDGE PARTNERS ,LLC,	165 S.UNION BLVD. STE.500	LAKEWOOD,CO 80228
256 94 West St	A Antonellis Co		2 to 4			
257 40 2nd Ave	General Medical Assoc		25 to 49	WALTHAM 40 LLC, / % EAGILL RIDGE PARTNERS ,LLC,	165 S.UNION BLVD. STE.500	LAKEWOOD,CO 80228
258 40 2nd Ave	Mass General Phycians Org		unknown	WALTHAM 40 LLC, / % EAGILL RIDGE PARTNERS ,LLC,	165 S.UNION BLVD. STE.500	LAKEWOOD,CO 80228
259 40 2nd Ave 520	National Birth Defect Ctr		10 to 24	WALTHAM 40 LLC, / % EAGILL RIDGE PARTNERS ,LLC,	165 S.UNION BLVD. STE.500	LAKEWOOD,CO 80228
260 40 2nd Ave	General Medical Assoc		25 to 49	WALTHAM 40 LLC, / % EAGILL RIDGE PARTNERS ,LLC,	165 S.UNION BLVD. STE.500	LAKEWOOD,CO 80228
261 40 2nd Ave	General Medical Assoc		unknown	WALTHAM 40 LLC, / % EAGILL RIDGE PARTNERS ,LLC,	165 S.UNION BLVD. STE.500	LAKEWOOD,CO 80228
262 40 2nd Ave	General Medical Assoc		unknown	WALTHAM 40 LLC, / % EAGILL RIDGE PARTNERS ,LLC,	165 S.UNION BLVD. STE.500	LAKEWOOD,CO 80228
263 40 2nd Ave	General Medical Assoc		unknown	WALTHAM 40 LLC, / % EAGILL RIDGE PARTNERS ,LLC,	165 S.UNION BLVD. STE.500	LAKEWOOD,CO 80228
264 40 2nd Ave	General Medical Assoc		unknown	WALTHAM 40 LLC, / % EAGILL RIDGE PARTNERS ,LLC,	165 S.UNION BLVD. STE.500	LAKEWOOD,CO 80228
265 40 2nd Ave	General Medical Assoc		unknown	WALTHAM 40 LLC, / % EAGILL RIDGE PARTNERS ,LLC,	165 S.UNION BLVD. STE.500	LAKEWOOD,CO 80228
266 40 2nd Ave	General Medical Assoc		unknown	WALTHAM 40 LLC, / % EAGILL RIDGE PARTNERS ,LLC,	165 S.UNION BLVD. STE.500	LAKEWOOD,CO 80228
267 40 2nd Ave	General Medical Assoc		unknown	WALTHAM 40 LLC, / % EAGILL RIDGE PARTNERS ,LLC,	165 S.UNION BLVD. STE.500	LAKEWOOD,CO 80228
268 40 2nd Ave 520	Healthsouth Rehabilitation Ctr		5 to 9			
269 85 1ST AVE	COLEMAN RESEARCH CORP			ATLANTIC-WALTHAM INVESTMENT, / II, LLC,	205 NEWBURY STREET	FRAMINGHAM,MA 01701
270 85 1ST AVE	THERMO ELECTRON CORP			ATLANTIC-WALTHAM INVESTMENT, / II, LLC,	205 NEWBURY STREET	FRAMINGHAM,MA 01701

ID	ADDRESS	BUSNAME	# Employ	OWNER	OWNMAIL1	OWNMAIL2
271	106 WEST ST	NYNEX		NEW ENGLAND TELEPHONE CO. / PROPERTY TAX DEPARTM	1095 AVENUE OF THE AMERICAS	NEW YORK,NY 10036
271	106 WEST ST	NYNEX		NEW ENGLAND TELEPHONE CO. / PROPERTY TAX DEPARTM	1095 AVENUE OF THE AMERICAS	NEW YORK,NY 10036
272	106 WEST ST	NEW ENGLAND TELEPHONE		NEW ENGLAND TELEPHONE CO. / PROPERTY TAX DEPARTM	1095 AVENUE OF THE AMERICAS	NEW YORK,NY 10036
273	60 1st Ave	Community Newsdealers	500 to 999	MCMILLEN REAL ESTATE LTD. / PTNSHP., BRUCE GURALL &	ONE MAIN STREET	CONCORD,MA 01742
274	106 West St	Stanley Steemer Carpet	10 to 24	NEW ENGLAND TELEPHONE CO. / PROPERTY TAX DEPARTM	1095 AVENUE OF THE AMERICAS	NEW YORK,NY 10036
275	106 West St	Weston Racquet Club	10 to 24	NEW ENGLAND TELEPHONE CO. / PROPERTY TAX DEPARTM	1095 AVENUE OF THE AMERICAS	NEW YORK,NY 10036
276	101 1ST AVE	THERMO ELECTRON CORP		IRG WALTHAM LIMITED / PARTNERSHIP	P.O. BOX 380828	CAMBRIDGE,MA 02238
277	101 1st Ave A	Ross Systems Inc	10 to 24	IRG WALTHAM LIMITED / PARTNERSHIP	P.O. BOX 380828	CAMBRIDGE,MA 02238
278	120 3RD AVE	CARRIER BUILDING SYSTEMS				
279	100 1st Ave	J Jay Holmes Oil Co	5 to 9	H D DEVELOPMENT OF MARYLAND, / INC.,	P.O. BOX 851128	LOUISVILLE,KY 40285-11
280	71 1st Ave	Canteen Food & Vending Svc	50 to 99	CANTEEN CORPORATION / COMPASS GROUP USA, INC	2400 YORKMONT ROAD	CHARLOTTE,NC 28217
281	130 3RD AVE	Trailbreaker.com		THIRD AVENUE WALTHAM LTD. / PARTNERSHIP,	230 THIRD AVE	WALTHAM,MA 02451-752
282	99 3rd Ave	Telekol Corp	50 to 99	FIFTY ASSOCIATES	50 CONGRESS ST. SUITE 543	BOSTON,MA 02109
283	130 3rd Ave	P C Warehouse	10 to 24	THIRD AVENUE WALTHAM LTD. / PARTNERSHIP,	230 THIRD AVE	WALTHAM,MA 02451-752
284	75 3rd Ave	Us Trust	5 to 9	75 THIRD AVE LMTD PTN, / C/O THE NELSON COMPANIES,	230 THIRD AVE	WALTHAM,MA 02451-752
285	132 West St	Weston Racquet Club	25 to 49	40 LOVE INC.	124 WEST ST.	WALTHAM,MA 02451-111
285	132 West St	Weston Racquet Club		40 LOVE INC.	124 WEST ST.	WALTHAM,MA 02451-111
286	71 2nd Ave	Atlantic Retail Properties	25 to 49			
287	80 2nd Ave	Coca-Cola Bottling Co	100 to 249	NATHAN-JEFFREY TRUST, ETAL, / COCA-COLA ENTERPRISES	9 B STREET	NEEDHAM HEIGHTS,MA
288	100 1st Ave	Home Depot Inc	250 to 499	H D DEVELOPMENT OF MARYLAND, / INC.,	P.O. BOX 851128	LOUISVILLE,KY 40285-11
289	101 1st Ave A6	National Multiple Sclerosis	25 to 49	IRG WALTHAM LIMITED / PARTNERSHIP	P.O. BOX 380828	CAMBRIDGE,MA 02238
290	101 1st Ave	Bosch Automotive Motor Systems	50 to 99	IRG WALTHAM LIMITED / PARTNERSHIP	P.O. BOX 380828	CAMBRIDGE,MA 02238
291	186 3rd Ave	Teradyne Inc	50 to 99	THIRD AVENUE WALTHAM LTD., / PARTNERSHIP,	230 THIRD AVE	WALTHAM,MA 02451-752
292	214 3rd Ave	Product Knowledge Systems	2 to 4	THIRD AVENUE WALTHAM LTD., / PARTNERSHIP,	230 THIRD AVE	WALTHAM,MA 02451
293	42 4TH AVE	B L H ELECTRONICS				
294	42 4TH AVE	KLOSS VIDEO CORP				
295	62 4th Ave	Interleaf Inc	250 to 499	FOURTH AVENUE, LLC, / % J.F. WHITE PROPERTIES, INC,	1 GATEWAY CTR, SUITE 500	NEWTON,MA 02458
296	54 4th Ave	Summerfield Suites Hotel	25 to 49	PARK AVENUE NOMINEE TRUST, / % J.F. WHITE PROPERTIES,	P.O. BOX 600240	NEWTONVILLE,MA 02460
297	195 West St	Parexel International Corp	500 to 999	200 WEST STREET LIMITED, / PARTNERSHIP,	800 BOYLSTON ST., 28TH FLOOR	BOSTON,MA 02199-8001
298	195 West St	Corporate Chef	2 to 4	200 WEST STREET LIMITED, / PARTNERSHIP,	800 BOYLSTON ST., 28TH FLOOR	BOSTON,MA 02199-8001
299	62 4TH AVE	KRONOS INC		FOURTH AVENUE, LLC, / % J.F. WHITE PROPERTIES, INC,	1 GATEWAY CTR, SUITE 500	NEWTON,MA 02458
300	62 4TH AVE	INFRARED INDS INC		FOURTH AVENUE, LLC, / % J.F. WHITE PROPERTIES, INC,	1 GATEWAY CTR, SUITE 500	NEWTON,MA 02458
301	45 4TH AVE	CONGRAF UNIVERSAL INC				
302	45 4TH AVE	POLAROID CORP				
303	230 3rd Ave	Prospect Hill Executive Office	25 to 49	REALTY ASSOCIATES FUND II (THE, / % NELSON CO.,	230 THIRD AVENUE	WALTHAM,MA 02451-752
304	84 4TH AVE	M A COM OMNI SPECTRA INC		FOURTH AVENUE, LLC, / % J.F. WHITE PROPERTIES, INC,	ONE GATEWAY CTR, SUITE 500	NEWTON,MA 02458
305	230 3rd Ave	Mitchell & Co	5 to 9	REALTY ASSOCIATES FUND II (THE, / % NELSON CO.,	230 THIRD AVENUE	WALTHAM,MA 02451-752
306	230 3rd Ave	Leading Exctv Orgnzn 100 Inc	5 to 9	REALTY ASSOCIATES FUND II (THE, / % NELSON CO.,	230 THIRD AVENUE	WALTHAM,MA 02451-752
307	230 3rd Ave	Nelson Co Ltd	25 to 49	REALTY ASSOCIATES FUND II (THE, / % NELSON CO.,	230 THIRD AVENUE	WALTHAM,MA 02451-752

ID	ADDRESS	BUSNAME	# Employ	OWNER	OWNMAIL1	OWNMAIL2
308	230 3rd Ave	Ikos Systems Inc	10 to 24	REALTY ASSOCIATES FUND II (THE, / % NELSON CO.,	230 THIRD AVENUE	WALTHAM,MA 02451-752
309	9 4th Ave	Syntonix	50 to 99	NINE FOURTH AVENUE, LLC, / % J.F. WHITE PROPERTIES,	ONE GATEWAY CENTER STE 500	NEWTON,MA 02458
310	78 4th Ave	Occupational Health & Rehab	10 to 24	FOURTH AVENUE, LLC, / % J.F. WHITE PROPERTIES, INC,	ONE GATEWAY CTR, SUITE 500	NEWTON,MA 02458
311	78 4th Ave	Foundation Technology	50 to 99	FOURTH AVENUE, LLC, / % J.F. WHITE PROPERTIES, INC,	ONE GATEWAY CTR, SUITE 500	NEWTON,MA 02458
312	78 4th Ave	Occupational Health Ctr	10 to 24	FOURTH AVENUE, LLC, / % J.F. WHITE PROPERTIES, INC,	ONE GATEWAY CTR, SUITE 500	NEWTON,MA 02458
313	125 2ND AVE	THERMO ELECTRON CORP		BAYBANK MIDDLESEX, / % BANKBOSTON, LEASE ADMIN.,	P.O. BOX 724	BOSTON,MA 02102
314	1265 MAIN ST	POLAROID CORP		POLAROID CORPORATION, / JOSEPHINE PARATORE,	920 WINTER ST, R1-1	WALTHAM,MA 02451
315	1265 MAIN ST	POLAROID CORP		POLAROID CORPORATION, / JOSEPHINE PARATORE,	920 WINTER ST, R1-1	WALTHAM,MA 02451
316	103 4TH AVE	POLAROID CORP		POLAROID CORPORATION, / JOSEPHINE PARATORE,	920 WINTER ST, R1-1	WALTHAM,MA 02451
317	103 4TH AVE	POLAROID CORP		POLAROID CORPORATION, / JOSEPHINE PARATORE,	920 WINTER ST, R1-1	WALTHAM,MA 02451
318	135 2nd Ave	Ski Market		RMD TRUST, JAY J. LANDER, / & RHEA M. ROAZEN, TRS.,	44 FALMOUTH ROAD	WESTON,MA 02493
318	135 2nd Ave	Bewi Productions Inc	2 to 4	RMD TRUST, JAY J. LANDER, / & RHEA M. ROAZEN, TRS.,	44 FALMOUTH ROAD	WESTON,MA 02493
319	130 2ND AVE	TELEDYNE ENGINEERING		WASHINGTON WALTHAM LIMITED, / PARTNERSHIP; % J W K	40 NONANTUM ST.	NEWTON,MA 02458
320	130 2nd Ave	Cencentra Managed Care Inc	100 to 249	WASHINGTON WALTHAM LIMITED, / PARTNERSHIP; % J W K	40 NONANTUM ST.	NEWTON,MA 02458
321	130 2nd Ave	Focus Health Care Management	2 to 4	WASHINGTON WALTHAM LIMITED, / PARTNERSHIP; % J W K	40 NONANTUM ST.	NEWTON,MA 02458
322	140 4th Ave	Omni Spectra Inc	2 to 4	M-A COM, INC., / 1011 PAWTUCKET BLVD.,	P.O. BOX 3295	LOWELL,MA 01853
323	140 4TH AVE	M/A-COM INC		M-A COM, INC., / 1011 PAWTUCKET BLVD.,	P.O. BOX 3295	LOWELL,MA 01853
324	140 4TH AVE	M/A-COM INC		M-A COM, INC., / 1011 PAWTUCKET BLVD.,	P.O. BOX 3295	LOWELL,MA 01853
325	140 4TH AVE	M A COM OMNI SPECTRA INC		M-A COM, INC., / 1011 PAWTUCKET BLVD.,	P.O. BOX 3295	LOWELL,MA 01853
326	9 Hillside Ave	G Mitchell Eckel Iii	2 to 4			
327	9 Hillside Ave 2	Lsi Logic Corp	50 to 99			
328	9 Hillside Ave 1457	Jackson National Insurance	5 to 9			
329	9 Hillside Ave 7	Microsoft Corp	50 to 99			
330	103 4th Ave	Polaroid Graphics Imaging Inc	100 to 249	POLAROID CORPORATION, / JOSEPHINE PARATORE,	920 WINTER ST, R1-1	WALTHAM,MA 02451
331	300 3rd Ave	Management Strategies Group	1	LGP LIMITED PARTNERSHIP	217 WEST CENTRAL STREET	NATICK,MA 01760
332	40 SYLVAN RD	G T E LABS INC		GTE LABORATORIES, INC. / C/O GTE LABORATORIES, INC.	40 SYLVAN ROAD	WALTHAM,MA 02451-112
333	153 2ND AVE	Gel Tex Pharmaceuticals Inc.		FIRST SECURITY BANK, NATIONAL, / ASSOC.,	153 SECOND AVENUE	WALTHAM,MA 02451
333	153 2ND AVE	SEILER CORP		FIRST SECURITY BANK, NATIONAL, / ASSOC.,	153 SECOND AVENUE	WALTHAM,MA 02451
334	140 4th Ave	M/A-Com Interconnect	250 to 499	M-A COM, INC., / 1011 PAWTUCKET BLVD.,	P.O. BOX 3295	LOWELL,MA 01853
335	230 3rd Ave	Schwartz Communications Inc	100 to 249	REALTY ASSOCIATES FUND II (THE, / % NELSON CO.,	230 THIRD AVENUE	WALTHAM,MA 02451-752
336	230 3rd Ave	Care Tools Inc	50 to 99	REALTY ASSOCIATES FUND II (THE, / % NELSON CO.,	230 THIRD AVENUE	WALTHAM,MA 02451-752
337	176 2nd Ave	Aurora Technologies	25 to 49	CONNELLY, MARK W., /,	31 GIRARD ROAD	WINCHESTER,MA 01890
338	300 3rd Ave	Mitsubishi Information Technologies	25 to 49	LGP LIMITED PARTNERSHIP	217 WEST CENTRAL STREET	NATICK,MA 01760
339	204 2nd Ave 3	Sbane	5 to 9	WP TRUST, PHILLIP J. NEXON., / TR.; C/O E.H. LINDE, PRES.,	800 BOYLSTON ST., 28TH FLOOR	BOSTON,MA 02199-8001
340	204 2nd Ave	Logic Vision Software Inc	5 to 9	WP TRUST, PHILLIP J. NEXON., / TR.; C/O E.H. LINDE, PRES.,	800 BOYLSTON ST., 28TH FLOOR	BOSTON,MA 02199-8001
341	204 2nd Ave Fl 3	Ikon Office Solutions	100 to 249	WP TRUST, PHILLIP J. NEXON., / TR.; C/O E.H. LINDE, PRES.,	800 BOYLSTON ST., 28TH FLOOR	BOSTON,MA 02199-8001
342	204 2nd Ave	Loan America Financial Corp	5 to 9	WP TRUST, PHILLIP J. NEXON., / TR.; C/O E.H. LINDE, PRES.,	800 BOYLSTON ST., 28TH FLOOR	BOSTON,MA 02199-8001
343	204 2nd Ave	Inte Pros	5 to 9	WP TRUST, PHILLIP J. NEXON., / TR.; C/O E.H. LINDE, PRES.,	800 BOYLSTON ST., 28TH FLOOR	BOSTON,MA 02199-8001
344	211 2nd Ave	Kodak Processing Lab	25 to 49	GELTEX PHARMACEUTICALS, INC, /,	153 SECOND AVE.	WALTHAM,MA 02451

ID	ADDRESS	BUSNAME	# Employ	OWNER	OWNMAIL1	OWNMAIL2
345 204 2ND AVE		NUCLEAR INTERNATIONAL COR		WP TRUST, PHILLIP J. NEXON,, / TR.; C/O E.H. LINDE, PRES.,,	800 BOYLSTON ST., 28TH FLOOR	BOSTON,MA 02199-8001
346 300 5th Ave		Capital Planning Group	5 to 9	PROSPECT HILL ACQUISITION TR., / % THE NELSON CO. LTD,	230 THIRD AVENUE	WALTHAM,MA 02451-752
347 300 5th Ave		Adecco Employment Svc	5 to 9	PROSPECT HILL ACQUISITION TR., / % THE NELSON CO. LTD,	230 THIRD AVENUE	WALTHAM,MA 02451-752
348 204 2nd Ave		Corporate Application Group	5 to 9	WP TRUST, PHILLIP J. NEXON,, / TR.; C/O E.H. LINDE, PRES.,,	800 BOYLSTON ST., 28TH FLOOR	BOSTON,MA 02199-8001
349 211 2ND AVE		XEROX REPRODUCTION CENTER		GELTEX PHARMACEUTICALS, INC, / ,	153 SECOND AVE.	WALTHAM,MA 02451
349 211 2nd Ave		Evergreen Solar Inc.		GELTEX PHARMACEUTICALS, INC, / ,	153 SECOND AVE.	WALTHAM,MA 0245
350 225 2nd Ave		Automatic Data Processing	500 to 999	ADP, INC., / C/O AUTOMATIC DATA PROCESSING,	P.O. BOX 9081	WALTHAM,MA 02454-908
351 230 2nd Ave 130		Economic Risk Managers Inc	2 to 4	COGLIANO REALTY TRUST; / JOHN COGLIANO JR., TRUSTEE	9 ISLAND PATH	WESTFORD, MA 01886
352 230 2nd Ave		Staffing Solutions	5 to 9	COGLIANO REALTY TRUST; / JOHN COGLIANO JR., TRUSTEE	9 ISLAND PATH	WESTFORD, MA 01886
353 230 2nd Ave		Richard Morella Cpa	2 to 4	COGLIANO REALTY TRUST; / JOHN COGLIANO JR., TRUSTEE	9 ISLAND PATH	WESTFORD, MA 01886
354 230 2nd Ave 130		Sullivan & Staff Risk Mgmt	2 to 4	COGLIANO REALTY TRUST; / JOHN COGLIANO JR., TRUSTEE	9 ISLAND PATH	WESTFORD, MA 01886
355 230 2nd Ave 130		Wic Insurance Inc	10 to 24	COGLIANO REALTY TRUST; / JOHN COGLIANO JR., TRUSTEE	9 ISLAND PATH	WESTFORD, MA 01886
356 230 2nd Ave Rear		Interactive Media Comm Inc	5 to 9	COGLIANO REALTY TRUST; / JOHN COGLIANO JR., TRUSTEE	9 ISLAND PATH	WESTFORD, MA 01886
357 230 2nd Ave 130		Sullivan & Staff Insurance Inc	1	COGLIANO REALTY TRUST; / JOHN COGLIANO JR., TRUSTEE	9 ISLAND PATH	WESTFORD, MA 01886
358 230 2nd Ave		Telecommunication Specialists	50 to 99	COGLIANO REALTY TRUST; / JOHN COGLIANO JR., TRUSTEE	9 ISLAND PATH	WESTFORD, MA 01886
359 244 2nd Ave		Milwaukee Electric Tool Corp	5 to 9	244 REALTY TRUST,, / MUNRO, M. VANCE TR.,	244 SECOND AVENUE	WALTHAM,MA 02451-110
360 256 2nd Ave		Massachusetts Association	10 to 24	MASSACHUSETTS ASSOC. / OF REALTORS	256 SECOND AVE	WALTHAM,MA 02451-110
361 266 2nd Ave		Raptor Systems Inc	50 to 99	CC & F SECOND AVENUE, LLC, / %CABOT, CABOT & FORBES,	99 SUMMER STREET	BOSTON,MA 02110
362 266 2nd Ave		Raxco Inc	1	CC & F SECOND AVENUE, LLC, / %CABOT, CABOT & FORBES,	99 SUMMER STREET	BOSTON,MA 02110
363 266 2nd Ave		Axent Technologies Inc	10 to 24	CC & F SECOND AVENUE, LLC, / %CABOT, CABOT & FORBES,	99 SUMMER STREET	BOSTON,MA 02110
364 266 2ND AVE		CTI CRYOGENICS		CC & F SECOND AVENUE, LLC, / %CABOT, CABOT & FORBES,	99 SUMMER STREET	BOSTON,MA 02110
365 266 2ND AVE		C T I CRYOGENICS		CC & F SECOND AVENUE, LLC, / %CABOT, CABOT & FORBES,	99 SUMMER STREET	BOSTON,MA 02110
366 266 2nd Ave		Corporate Cafe	2 to 4	CC & F SECOND AVENUE, LLC, / %CABOT, CABOT & FORBES,	99 SUMMER STREET	BOSTON,MA 02110
367 266 2nd Ave		Csc Consulting	250 to 499	CC & F SECOND AVENUE, LLC, / %CABOT, CABOT & FORBES,	99 SUMMER STREET	BOSTON,MA 02110
368 288 2nd Ave		Quest Dry Cleaning Inc	10 to 24			
369 290 2nd Ave		Sam Meyers Formal Wear	5 to 9	WALTHAM 290 REALTY TRUST, / C/O RICHARD E. FORD	3 WELCH ROAD	LONDONDERRY, NH 0305
370 292 2nd Ave		Kwik Kopy Printing	10 to 24	WALTHAM 290 REALTY TRUST, / C/O RICHARD E. FORD	3 WELCH ROAD	LONDONDERRY, NH 0305
371 300 2nd Ave		Tomey Scientific	10 to 24	HICKORY DRIVE PROPERTIES, / REALTY TRUST, PAUL & DAV	255 BEAR HILL ROAD	WALTHAM,MA 02451-100
372 300 2nd Ave		Risc Management	25 to 49	HICKORY DRIVE PROPERTIES, / REALTY TRUST, PAUL & DAV	255 BEAR HILL ROAD	WALTHAM,MA 02451-100
373 290 2ND AVE		Quest Dry Cleaning		WALTHAM 290 REALTY TRUST, / C/O RICHARD E. FORD	3 WELCH ROAD	LONDONDERRY, NH 0305
373 288 2ND AVE		RICHMOND SCREW ANCHOR CO		WALTHAM 290 REALTY TRUST, / C/O RICHARD E. FORD	3 WELCH ROAD	LONDONDERRY, NH 0305
374 290 2ND AVE		T R W CUSTOMER SERVICE DIV		WALTHAM 290 REALTY TRUST, / C/O RICHARD E. FORD	3 WELCH ROAD	LONDONDERRY, NH 0305
375 301 2nd Ave		Fire Control Instruments Inc	100 to 249	CEDRONE, NICHOLS J., / ATTN KEN LAROCQUE,	301 SECOND AVENUE	WALTHAM,MA 02451-112
376 300 2ND AVE		T M A SKINNER & SHERMAN LA		HICKORY DRIVE PROPERTIES, / REALTY TRUST, PAUL & DAV	255 BEAR HILL ROAD	WALTHAM,MA 02451-100
377 301 2ND AVE		DAYMARC CORP		CEDRONE, NICHOLS J., / ATTN KEN LAROCQUE,	301 SECOND AVENUE	WALTHAM,MA 02451-112
378 305 2nd Ave		Metro West Bank	10 to 24	EXECUTIVE PARK REALTY CORP., / ,	305 SECOND AVENUE	WALTHAM,MA 02451-112
379 332 2nd Ave		Technology Sales Inc	10 to 24	PAGLIAZZO, PHILIP & ROSE, / ,	77 WESTERLY RD.	WESTON,MA 02493
380 358 2ND AVE		Hyster New England	100 to 249	HILLSIDE ASSOCIATES & / FIFTH TERMINAL CORP.	100 RING ROAD WEST	GARDEN CITY,NY 11530
381 350 2nd Ave		Rapidex Inc	2 to 4	HILLSIDE ASSOCIATES & / C/O HILLSIDE ASSOCIATES	100 RING ROAD WEST	GARDEN CITY,NY 11530

ID	ADDRESS	BUSNAME	# Employ	OWNER	OWNMAIL1	OWNMAIL2
382	350 2nd Ave	Foster Miller Inc	250 to 499	HILLSIDE ASSOCIATES & / C/O HILLSIDE ASSOCIATES	100 RING ROAD WEST	GARDEN CITY,NY 11530
383	350 2nd Ave	Super Ex Polymer	5 to 9	HILLSIDE ASSOCIATES & / C/O HILLSIDE ASSOCIATES	100 RING ROAD WEST	GARDEN CITY,NY 11530
384	360 2nd Ave	Comm-Tract	50 to 99	HILLSIDE ASSOCIATES & / FIFTH TERMINAL CORP.	100 RING ROAD WEST	GARDEN CITY,NY 11530
385	360 2nd Ave 2	Cambex Corp	25 to 49	HILLSIDE ASSOCIATES & / FIFTH TERMINAL CORP.	100 RING ROAD WEST	GARDEN CITY,NY 11530
386	358 2ND AVE	BOYLE LEWIS INC		HILLSIDE ASSOCIATES & / FIFTH TERMINAL CORP.	100 RING ROAD WEST	GARDEN CITY,NY 11530
386	358 2ND AVE	Foster Miller		HILLSIDE ASSOCIATES & / FIFTH TERMINAL CORP.	100 RING ROAD WEST	GARDEN CITY,NY 11530
387	360 2ND AVE	I P L SYSTEMS INC		HILLSIDE ASSOCIATES & / FIFTH TERMINAL CORP.	100 RING ROAD WEST	GARDEN CITY,NY 11530
388	341 2nd Ave	Industrial Aluminum Co Inc	10 to 24	PIERCE ALUMINUM CO., INC	136 WILL DRIVE	CANTON,MA 02021
389	332 BEAR HILL RD	COMMERCIAL UNION INSURANC				
390	330 Bear Hill Rd	IBIS Consulting Group		330 BEAR HILL, LLC / % ROSEWOOD MANAGEMENT CO.INC.	293 BOSTON POST RD WEST	MARLBOROUGH,MA 017
390	330 BEAR HILL RD	DISTRIBUTED COMPUTER SYSTE		330 BEAR HILL, LLC / % ROSEWOOD MANAGEMENT CO.INC.	293 BOSTON POST RD WEST	MARLBOROUGH,MA 017
391	335 Bear Hill Rd	Boston Engineering	5 to 9	HICKORY DRIVE PROPERTIES, / REALTY TRUST, PAUL & DAV	255 BEAR HILL ROAD	WALTHAM,MA 02451-100
392	335 Bear Hill Rd	Extech Instruments Corp	50 to 99	HICKORY DRIVE PROPERTIES, / REALTY TRUST, PAUL & DAV	255 BEAR HILL ROAD	WALTHAM,MA 02451-100
393	335 Bear Hill Rd	Microprint	25 to 49	HICKORY DRIVE PROPERTIES, / REALTY TRUST, PAUL & DAV	255 BEAR HILL ROAD	WALTHAM,MA 02451-100
394	335 Bear Hill Rd	Unisys Corporation	5 to 9	HICKORY DRIVE PROPERTIES, / REALTY TRUST, PAUL & DAV	255 BEAR HILL ROAD	WALTHAM,MA 02451-100
395	335 Bear Hill Rd	Rental Network	2 to 4	HICKORY DRIVE PROPERTIES, / REALTY TRUST, PAUL & DAV	255 BEAR HILL ROAD	WALTHAM,MA 02451-100
396	335 BEAR HILL RD	ADCOLE CORP		HICKORY DRIVE PROPERTIES, / REALTY TRUST, PAUL & DAV	255 BEAR HILL ROAD	WALTHAM,MA 02451-100
397	320 Bear Hill Rd	Johnstone Supply	50 to 99	EASTPORT EQUITY I, INC., /	318 BEAR HILL ROAD	WALTHAM,MA 02451-101
398	60 Hickory Dr 7	National City Mortgage Co	5 to 9	BEAR HILL INVESTMENT CORP.	255 BEAR HILL ROAD	WALTHAM,MA 02451-100
399	60 Hickory Dr Fl 5	Jungle Jims Playland Inc	50 to 99	BEAR HILL INVESTMENT CORP.	255 BEAR HILL ROAD	WALTHAM,MA 02451-100
400	318 Bear Hill Rd 5	Pakcom	1	EASTPORT EQUITY I, INC., /	318 BEAR HILL ROAD	WALTHAM,MA 02451-101
401	318 Bear Hill Rd	Eastport Real Estate Svc	5 to 9	EASTPORT EQUITY I, INC., /	318 BEAR HILL ROAD	WALTHAM,MA 02451-101
402	318 Bear Hill Rd 1	Applewood Development Group	1	EASTPORT EQUITY I, INC., /	318 BEAR HILL ROAD	WALTHAM,MA 02451-101
403	318 Bear Hill Rd 3	Cordel Associates Inc	1	EASTPORT EQUITY I, INC., /	318 BEAR HILL ROAD	WALTHAM,MA 02451-101
404	318 Bear Hill Rd	National Asset Resolution	5 to 9	EASTPORT EQUITY I, INC., /	318 BEAR HILL ROAD	WALTHAM,MA 02451-101
405	318 Bear Hill Rd	Tower Resource Management	5 to 9	EASTPORT EQUITY I, INC., /	318 BEAR HILL ROAD	WALTHAM,MA 02451-101
406	318 Bear Hill Rd	Abelli Heating & Air Cond	5 to 9	EASTPORT EQUITY I, INC., /	318 BEAR HILL ROAD	WALTHAM,MA 02451-101
407	318 Bear Hill Rd 4	Alpha Marketing Group	2 to 4	EASTPORT EQUITY I, INC., /	318 BEAR HILL ROAD	WALTHAM,MA 02451-101
408	Po Box 625	Collidge Coolant Co	10 to 24			
409	318 Bear Hill Rd	Musicians Of The Old Post Road	1	EASTPORT EQUITY I, INC., /	318 BEAR HILL ROAD	WALTHAM,MA 02451-101
410	318 Bear Hill Rd	Pace Services	25 to 49	EASTPORT EQUITY I, INC., /	318 BEAR HILL ROAD	WALTHAM,MA 02451-101
411	318 Bear Hill Rd 2	Abilli Heating & Air	10 to 24	EASTPORT EQUITY I, INC., /	318 BEAR HILL ROAD	WALTHAM,MA 02451-101
412	300 BEAR HILL RD	EG & G SYNFUELS INC		BEAR HILL INVESTMENT CORP, /,,	255 BEAR HILL ROAD	WALTHAM,MA 02451-100
413	61 Hickory Dr	Herbst Lazar Bell Inc	10 to 24	BEAR HILL INVESTMENT CORP.	255 BEAR HILL ROAD	WALTHAM,MA 02451-100
414	285 Bear Hill Rd	Henry I Simmons Floral Dsgng	1			
414	285 Bear Hill Rd	Extech Instruments		Taurus Investments		
415	300 Bear Hill Rd	Strategic Placement Svc	10 to 24	BEAR HILL INVESTMENT CORP, /,,	255 BEAR HILL ROAD	WALTHAM,MA 02451-100
416	300 Bear Hill Rd	ibis Consulting Group Inc	2 to 4	BEAR HILL INVESTMENT CORP, /,,	255 BEAR HILL ROAD	WALTHAM,MA 02451-100
417	300 Bear Hill Rd	Prospect Hill Parents Ctr	10 to 24	BEAR HILL INVESTMENT CORP, /,,	255 BEAR HILL ROAD	WALTHAM,MA 02451-100

ID	ADDRESS	BUSNAME	# Employ	OWNER	OWNMAIL1	OWNMAIL2
418300	Bear Hill Rd	Workplace Connections	10 to 24	BEAR HILL INVESTMENT CORP, /,,	255 BEAR HILL ROAD	WALTHAM,MA 02451-100
419300	Bear Hill Rd	Bio Metics Inc	10 to 24	BEAR HILL INVESTMENT CORP, /,,	255 BEAR HILL ROAD	WALTHAM,MA 02451-100
420300	Bear Hill Rd 7	Ricoh Corp Direct Sales & Svc	10 to 24	BEAR HILL INVESTMENT CORP, /,,	255 BEAR HILL ROAD	WALTHAM,MA 02451-100
421300	Bear Hill Rd	Micros Systems Inc	10 to 24	BEAR HILL INVESTMENT CORP, /,,	255 BEAR HILL ROAD	WALTHAM,MA 02451-100
422265	Bear Hill Rd	Fulfillment Express	50 to 99	J. AND K. REALTY TRUST,, / JON H. & KAREN M.,	26 LAWRENCE LANE	BELMONT,MA 02478
423255	Bear Hill Rd Fl 2	Robosoft Inc	2 to 4	BEAR HILL INVESTMENT CORP, /,,	255 BEAR HILL ROAD	WALTHAM,MA 02451-100
423255	Bear Hill Rd	Bear Hill Investment Corp.		BEAR HILL INVESTMENT CORP, /,,	255 BEAR HILL ROAD	WALTHAM,MA 02451-100
424255	Bear Hill Rd	Performance Enhancement Assoc	5 to 9	BEAR HILL INVESTMENT CORP, /,,	255 BEAR HILL ROAD	WALTHAM,MA 02451-100
425255	Bear Hill Rd 1100	Northeast Planning Svc	5 to 9	BEAR HILL INVESTMENT CORP, /,,	255 BEAR HILL ROAD	WALTHAM,MA 02451-100
426255	Bear Hill Rd	U C Lending	5 to 9	BEAR HILL INVESTMENT CORP, /,,	255 BEAR HILL ROAD	WALTHAM,MA 02451-100
427255	Bear Hill Rd	Resource Consultants		BEAR HILL INVESTMENT CORP, /,,	255 BEAR HILL ROAD	WALTHAM,MA 02451-100
427255	Bear Hill Rd 1100	Louis A Beckerman & Assoc	2 to 4	BEAR HILL INVESTMENT CORP, /,,	255 BEAR HILL ROAD	WALTHAM,MA 02451-100
428255	Bear Hill Rd	IMAC		BEAR HILL INVESTMENT CORP, /,,	255 BEAR HILL ROAD	WALTHAM,MA 02451-100
428255	Bear Hill Rd	Institutional Mortgage	2 to 4	BEAR HILL INVESTMENT CORP, /,,	255 BEAR HILL ROAD	WALTHAM,MA 02451-100
429255	Bear Hill Rd	Health Information Designs	10 to 24	BEAR HILL INVESTMENT CORP, /,,	255 BEAR HILL ROAD	WALTHAM,MA 02451-100
429255	Bear Hill Rd	Plain Aviation Inc.		BEAR HILL INVESTMENT CORP, /,,	255 BEAR HILL ROAD	WALTHAM,MA 02451-100
430255	Bear Hill Rd	Techpro Systems	5 to 9	BEAR HILL INVESTMENT CORP, /,,	255 BEAR HILL ROAD	WALTHAM,MA 02451-100
431255	Bear Hill Rd	Neelon Associates	10 to 24	BEAR HILL INVESTMENT CORP, /,,	255 BEAR HILL ROAD	WALTHAM,MA 02451-100
432255	Bear Hill Rd	W P Corcoran & Assoc	10 to 24	BEAR HILL INVESTMENT CORP, /,,	255 BEAR HILL ROAD	WALTHAM,MA 02451-100
432255	Bear Hill Rd	Neelon Management		BEAR HILL INVESTMENT CORP, /,,	255 BEAR HILL ROAD	WALTHAM,MA 02451-100
433255	Bear Hill Rd Fl 1	leec	2 to 4	BEAR HILL INVESTMENT CORP, /,,	255 BEAR HILL ROAD	WALTHAM,MA 02451-100
433255	Bear Hill Rd	ICG/Pharmaceutical Strategies		BEAR HILL INVESTMENT CORP, /,,	255 BEAR HILL ROAD	WALTHAM,MA 02451-100
434255	Bear Hill Rd Fl 3	Topkins & Bevans	25 to 49	BEAR HILL INVESTMENT CORP, /,,	255 BEAR HILL ROAD	WALTHAM,MA 02451-100
435255	Bear Hill Rd	Management Tools & Resources	2 to 4	BEAR HILL INVESTMENT CORP, /,,	255 BEAR HILL ROAD	WALTHAM,MA 02451-100
436255	Bear Hill Rd	Data Fellows		BEAR HILL INVESTMENT CORP, /,,	255 BEAR HILL ROAD	WALTHAM,MA 02451-100
436255	Bear Hill Rd Fl 1	Volt Services Group	2 to 4	BEAR HILL INVESTMENT CORP, /,,	255 BEAR HILL ROAD	WALTHAM,MA 02451-100
437255	Bear Hill Rd Fl 2	Integrated Care Group	10 to 24	BEAR HILL INVESTMENT CORP, /,,	255 BEAR HILL ROAD	WALTHAM,MA 02451-100
438235	Bear Hill Rd 305	Act Intl	2 to 4	CLAIRBORNE REALTY TRUST, / COHEN, RICHARD D. & ETAL.,	527 MADISON AVE.-19TH FLOOR	NEW YORK,NY 10022
439235	Bear Hill Rd	Mts Boston Information Svc	10 to 24	CLAIRBORNE REALTY TRUST, / COHEN, RICHARD D. & ETAL.,	527 MADISON AVE.-19TH FLOOR	NEW YORK,NY 10022
440235	Bear Hill Rd 102	Control Building Svc	5 to 9	CLAIRBORNE REALTY TRUST, / COHEN, RICHARD D. & ETAL.,	527 MADISON AVE.-19TH FLOOR	NEW YORK,NY 10022
441235	Bear Hill Rd 103	Ascension Technology	10 to 24	CLAIRBORNE REALTY TRUST, / COHEN, RICHARD D. & ETAL.,	527 MADISON AVE.-19TH FLOOR	NEW YORK,NY 10022
442235	Bear Hill Rd	Unesco/Genex	10 to 24	CLAIRBORNE REALTY TRUST, / COHEN, RICHARD D. & ETAL.,	527 MADISON AVE.-19TH FLOOR	NEW YORK,NY 10022
443235	Bear Hill Rd 301	Richard Aron Assoc	2 to 4	CLAIRBORNE REALTY TRUST, / COHEN, RICHARD D. & ETAL.,	527 MADISON AVE.-19TH FLOOR	NEW YORK,NY 10022
444280	Bear Hill Rd	Data Associates Inc	25 to 49	TWO EIGHTY BEAR HILL ROAD, LLC, /,	280 BEAR HILL RD	WALTHAM,MA 02451-100
445280	Bear Hill Rd	Pameco Corp	5 to 9	TWO EIGHTY BEAR HILL ROAD, LLC, /,	280 BEAR HILL RD	WALTHAM,MA 02451-100
446265	BEAR HILL RD	F W DERBYSHIRE INC		J. AND K. REALTY TRUST,, / JON H. & KAREN M.,	26 LAWRENCE LANE	BELMONT,MA 02478
447219	Bear Hill Rd	Peripheral Parts Support Inc	25 to 49	219-221 BEAR HILL ROAD, / REALTY TRUST, MILTON J.,	195 MARSH ST	BELMONT,MA 02478
448221	Bear Hill Rd	Cellular One Sales & Svc Ctr	25 to 49	219-221 BEAR HILL ROAD, / REALTY TRUST, MILTON J.,	195 MARSH ST	BELMONT,MA 02478
449260	Bear Hill Rd 300	Hillcrest Consultants Inc	2 to 4	240 BEAR HILL ROAD REALTY, / TRUST, VINCENT A. MESSIN	220 BEAR HILL ROAD	WALTHAM,MA 02451-100

ID	ADDRESS	BUSNAME	# Employ	OWNER	OWNMAIL1	OWNMAIL2
450	260 Bear Hill Rd 106	Walgreen Drug Stores	10 to 24	240 BEAR HILL ROAD REALTY, / TRUST, VINCENT A. MESSIN	220 BEAR HILL ROAD	WALTHAM,MA 02451-100
451	260 Bear Hill Rd 301	Livermore Edwards & Assoc	10 to 24	240 BEAR HILL ROAD REALTY, / TRUST, VINCENT A. MESSIN	220 BEAR HILL ROAD	WALTHAM,MA 02451-100
452	260 Bear Hill Rd 101	Infostaff	5 to 9	240 BEAR HILL ROAD REALTY, / TRUST, VINCENT A. MESSIN	220 BEAR HILL ROAD	WALTHAM,MA 02451-100
453	260 Bear Hill Rd 105	Buck Harrison-Louis	5 to 9	240 BEAR HILL ROAD REALTY, / TRUST, VINCENT A. MESSIN	220 BEAR HILL ROAD	WALTHAM,MA 02451-100
454	260 Bear Hill Rd 302	Insight Out Inc	2 to 4	240 BEAR HILL ROAD REALTY, / TRUST, VINCENT A. MESSIN	220 BEAR HILL ROAD	WALTHAM,MA 02451-100
455	260 Bear Hill Rd 104	Airborne Research	2 to 4	240 BEAR HILL ROAD REALTY, / TRUST, VINCENT A. MESSIN	220 BEAR HILL ROAD	WALTHAM,MA 02451-100
456	260 Bear Hill Rd 200	Arcon	25 to 49	240 BEAR HILL ROAD REALTY, / TRUST, VINCENT A. MESSIN	220 BEAR HILL ROAD	WALTHAM,MA 02451-100
457	260 Bear Hill Rd 100	Grant Mortgage Svc	5 to 9	240 BEAR HILL ROAD REALTY, / TRUST, VINCENT A. MESSIN	220 BEAR HILL ROAD	WALTHAM,MA 02451-100
458	260 Bear Hill Rd 207	Iandiorio & Teska	10 to 24	240 BEAR HILL ROAD REALTY, / TRUST, VINCENT A. MESSIN	220 BEAR HILL ROAD	WALTHAM,MA 02451-100
459	195 Bear Hill Rd	Storage Depot	2 to 4	WALTHAM STORAGE DEPOT TR., / BLOCH, J. GERSON & ET A	26 ELM STREET	QUINCY,MA 02169-5442
460	195 Bear Hill Rd	Ryder Truck Rental	2 to 4	WALTHAM STORAGE DEPOT TR., / BLOCH, J. GERSON & ET A	26 ELM STREET	QUINCY,MA 02169-5442
461	240 Bear Hill Rd 101	Netguru Systems Inc	25 to 49	240 BEAR HILL ROAD REALTY, / TRUST, VINCENT A. MESSIN	220 BEAR HILL ROAD	WALTHAM,MA 02451-100
462	240 Bear Hill Rd	Net Guru Systems Inc	5 to 9	240 BEAR HILL ROAD REALTY, / TRUST, VINCENT A. MESSIN	220 BEAR HILL ROAD	WALTHAM,MA 02451-100
463	240 Bear Hill Rd 202	Val Morgan Cinema Advertising	2 to 4	240 BEAR HILL ROAD REALTY, / TRUST, VINCENT A. MESSIN	220 BEAR HILL ROAD	WALTHAM,MA 02451-100
464	240 Bear Hill Rd	Buck Harrison-Louis	5 to 9	240 BEAR HILL ROAD REALTY, / TRUST, VINCENT A. MESSIN	220 BEAR HILL ROAD	WALTHAM,MA 02451-100
465	240 Bear Hill Rd 106	Object Components Corp	2 to 4	240 BEAR HILL ROAD REALTY, / TRUST, VINCENT A. MESSIN	220 BEAR HILL ROAD	WALTHAM,MA 02451-100
466	240 Bear Hill Rd 104	R/D Tech	2 to 4	240 BEAR HILL ROAD REALTY, / TRUST, VINCENT A. MESSIN	220 BEAR HILL ROAD	WALTHAM,MA 02451-100
467	69 Hickory Dr	Medsafe Inc	50 to 99	TAMA LIMITED PARTNERSHIP	P.O. BOX 275	CANTON,MA 02021-0275
468	60 Hickory Dr	Precomark	2 to 4	BEAR HILL INVESTMENT CORP.	255 BEAR HILL ROAD	WALTHAM,MA 02451-100
469	60 Hickory Dr Fl 5	Jeepers Inc	50 to 99	BEAR HILL INVESTMENT CORP.	255 BEAR HILL ROAD	WALTHAM,MA 02451-100
470	220 Bear Hill Rd	Ctc Communications Corp	50 to 99	220 BEAR HILL ROAD REALTY, / TRUST, VINCENT A. MESSIN	220 BEAR HILL ROAD	WALTHAM,MA 02451-100
471	196 Bear Hill Rd	Pro Source	10 to 24	BERMAN REALTY TRUST,, / ALBERT & EDITH O. BERMAN,TR	196 BEAR HILL ROAD	WALTHAM,MA 02451-100
472	21 Hickory Dr	Summit Technology Inc	100 to 249	BEAR HILL INVESTMENT CORP.	255 BEAR HILL ROAD	WALTHAM,MA 02451-100
473	160 Bear Hill Rd	FRASCO Printing, Inc.		SWANSON REAL ESTATE TRUST, / C/O RAYMOND O. SWANSON	7 ELLISON PARK	WALTHAM,MA 02452-611
473	160 BEAR HILL RD	T G M DETECTORS INC		SWANSON REAL ESTATE TRUST, / C/O RAYMOND O. SWANSON	7 ELLISON PARK	WALTHAM,MA 02452-611
474	195 BEAR HILL RD	FOSTER MILLER INC		WALTHAM STORAGE DEPOT TR., / BLOCH, J. GERSON & ET A	26 ELM STREET	QUINCY,MA 02169-5442
475	16 HICKORY DR	MOBIL SOLAR ENERGY CORP				
476	180 Bear Hill Rd	Sir Speedy Printing Center	5 to 9	MASS FLORAL PROPERTIES	180 BEAR HILL ROAD	WALTHAM,MA 02451-103
477	180 Bear Hill Rd	Environmental Systems Corp	5 to 9	MASS FLORAL PROPERTIES	180 BEAR HILL ROAD	WALTHAM,MA 02451-103
478	180 Bear Hill Rd	Bear Hill Cafe & Deli	2 to 4	MASS FLORAL PROPERTIES	180 BEAR HILL ROAD	WALTHAM,MA 02451-103
479	180 Bear Hill Rd	Atlantis Flooring Co	2 to 4	MASS FLORAL PROPERTIES	180 BEAR HILL ROAD	WALTHAM,MA 02451-103
480	179 Bear Hill Rd	Cfc Inc	50 to 99	BEAR HILL ENTERPRISES, LLC, /	44 VARICK HILL ROAD	WABAN,MA 02468
481	166 Bear Hill Rd	Actronics	10 to 24			
482	160 Bear Hill Rd	Consolidated Technology Corp	5 to 9	SWANSON REAL ESTATE TRUST, / C/O RAYMOND O. SWANSON	7 ELLISON PARK	WALTHAM,MA 02452-611
482	160 Bear Hill Rd	United States Dynamics		SWANSON REAL ESTATE TRUST, / C/O RAYMOND O. SWANSON	7 ELLISON PARK	WALTHAM,MA 02452-611
483	155 Bear Hill Rd	Pizzeria Uno Chicago Bar-Grill	25 to 49	DUFFY, NORMAN, / C/O WALTHAM UNO, INC.,	100 CHARLES PARK ROAD	WEST ROXBURY,MA 021
484	160 Bear Hill Rd	Brodney & Sons	2 to 4	SWANSON REAL ESTATE TRUST, / C/O RAYMOND O. SWANSON	7 ELLISON PARK	WALTHAM,MA 02452-611
485	150 Bear Hill Rd	Icos Vision Systems Inc	10 to 24	BEAR HILL INVESTMENT, / CORPORATION,	255 BEAR HILL ROAD	WALTHAM,MA 02451-100
486	139 Bear Hill Rd	National Tire & Battery	10 to 24	NTW INC. / 768 TAX DEPT., B-2 107A	3333 BEVERLY ROAD	HOFFMAN ESTATES,IL 60

ID	ADDRESS	BUSNAME	# Employ	OWNER	OWNMAIL1	OWNMAIL2
487	11 Fox Rd	Riverside Tool & Die Co	2 to 4	FEENEY, JAMES H.	27 ETON COURT	RAMSEY,NJ 07446
488	11 Fox Rd	Parisi Associates Inc	5 to 9	FEENEY, JAMES H.	27 ETON COURT	RAMSEY,NJ 07446
489	26 Fox Rd	Will-Land Printing Co	50 to 99	WILLAND CORPORATION	26 FOX ROAD	WALTHAM,MA 02451-100
490	20 Fox Rd	Work Community Independence		ROBERT E. NIMS REAL ESTATE, / TRUST; % PARK REALTY TR	20 FOX ROAD	WALTHAM,MA 02451
490	20 Fox Rd	Comprint	5 to 9	ROBERT E. NIMS REAL ESTATE, / TRUST; % PARK REALTY TR	20 FOX ROAD	WALTHAM,MA 02451
491	19 Fox Rd	Asquith Corp	10 to 24	19 FOX ROAD, LLC., / ATTN: SCOTT SIRIER,	19 FOX RD.	WALTHAM,MA 02451-100
492	25 Fox Rd	Haley & Ward Inc	10 to 24	FOX RIVER TRUST,, / CHARLES H. MILLER, ET ALS,,	25 FOX ROAD	WALTHAM,MA 02451-100
493	87 Fox Rd 722	Healing Touch	2 to 4			
494	139 BEAR HILL RD	E G & G INTERNATIONAL INC		NTW INC. / 768 TAX DEPT., B-2 107A	3333 BEVERLY ROAD	HOFFMAN ESTATES,IL 60
495	26 FOX RD	NORTHEAST LAB MACHINE CO		WILLAND CORPORATION	26 FOX ROAD	WALTHAM,MA 02451-100
496	20 FOX RD	E G & G PUBLICATIONS MEDIA C		ROBERT E. NIMS REAL ESTATE, / TRUST; % PARK REALTY TR	20 FOX ROAD	WALTHAM,MA 02451
497	50 Bear Hill Rd	Hemphill Drilling & Blasting	10 to 24	PROSPECT HILL REALTY TRUST, / CLAYTON V HEMPHILL, T	16014 N. 50TH LN.	GLENDALE,AZ 85306-265
498	40 Bear Hill Rd	Hemagen Diagnostics Inc	50 to 99	PAGLIAZZO, PHILIP &, / ROSE M. H&UX T/E,	77 WESTERLY ROAD	WESTON,MA 02493
499	1440 Main St	Mms Publications	250 to 499	1440 MAIN ST. ASSOC. NOM. TR., / CHARLES J. SCHREIBER JR.	125 SUMMER ST. STE.1640	BOSTON,MA 02110
500	1500 Main St	Keane Fire & Safety Equipment	25 to 49	HAYES NOMINEE TRUST, / HAYES, GEORGE P., JR., TR.	14 HAMPSHIRE STREET	SUDBURY,MA 01776
501	1500 Main St	Gift Basket Inc	2 to 4	HAYES NOMINEE TRUST, / HAYES, GEORGE P., JR., TR.	14 HAMPSHIRE STREET	SUDBURY,MA 01776
502	1500 Main St	Kbd Entertainment	2 to 4	HAYES NOMINEE TRUST, / HAYES, GEORGE P., JR., TR.	14 HAMPSHIRE STREET	SUDBURY,MA 01776
503	1490 MAIN ST	HARDRIC LABS INC		RICHARD FAMILY TRUST, / ELLEN TANNEHILL, TR.	10098 SILVER CREEK LANE	ELLAJON,CA 92021
504	1377 Main St	Industrial & Biomedical Sensor	10 to 24	PAGLIAZZO, PHILIP &, / ROSE H&UX,	77 WESTERLY RD.	WESTON,MA 02493
505	1395 Main St	La Cava's Abbey Carpet	2 to 4			
506	1395 Main St	Baystate Carpet Svc	2 to 4			
507	1339 Main St	Wolfers Lighting	50 to 99			
508	1345 Main St	Phytron Inc	2 to 4	128 REALTY TRUST, ARTHUR L., / ROSSI, ARTHUR J. ROSSI &	1345 MAIN ST TOP FLR.	WALTHAM,MA 02451-162
509	1490 Main St	Hardric Laboratories Inc	10 to 24	RICHARD FAMILY TRUST, / ELLEN TANNEHILL, TR.	10098 SILVER CREEK LANE	ELLAJON,CA 92021
510	1432 MAIN ST	THORNTON ASSOCS INC		ROBINSON\1432 MAIN STREET, / LIMITED PARTNERSHIP,	125 CAMBRIDGE PARK DR.	CAMBRIDGE,MA 02140
511	1420 MAIN ST	CLAUDE'S SERVICE STATION				
512	1420 MAIN ST RTE 117	SUNOCO SERVICE STA				
513	1365 MAIN ST	COLLABORATIVE RESEARCH IN		SWANSON REAL ESTATE TRUST, / SWANSON, RAYMOND &	7 ELLISON PARK	WALTHAM,MA 02452-611
514	1365 MAIN ST	GENOME THERAPEUTICS CORP		SWANSON REAL ESTATE TRUST, / SWANSON, RAYMOND &	7 ELLISON PARK	WALTHAM,MA 02452-611
515	1339 Main St	Standard Electric Supply Co	50 to 99			
516	1339 Main St	Lighting Design Group	50 to 99			
517	1345 Main St	Softworld Inc	50 to 99	128 REALTY TRUST, ARTHUR L., / ROSSI, ARTHUR J. ROSSI &	1345 MAIN ST TOP FLR.	WALTHAM,MA 02451-162
518	1345 Main St.	Faraday Distribution Center		128 REALTY TRUST, ARTHUR L., / ROSSI, ARTHUR J. ROSSI &	1345 MAIN ST TOP FLR.	WALTHAM,MA 02451-162
519	1345 Main St 3	American Equipment Sales Corp	10 to 24	128 REALTY TRUST, ARTHUR L., / ROSSI, ARTHUR J. ROSSI &	1345 MAIN ST TOP FLR.	WALTHAM,MA 02451-162
520	1349 Main St	Hydraulic & Water Resources	10 to 24			
521	1345 Main St	Innovative Computer Solutions	2 to 4	128 REALTY TRUST, ARTHUR L., / ROSSI, ARTHUR J. ROSSI &	1345 MAIN ST TOP FLR.	WALTHAM,MA 02451-162
522	1345 Main St	Boston Cellular Inc	5 to 9	128 REALTY TRUST, ARTHUR L., / ROSSI, ARTHUR J. ROSSI &	1345 MAIN ST TOP FLR.	WALTHAM,MA 02451-162
523	Po Box 1586	Pro Tools	25 to 49			
524	1345 Main St	Real Estate Connection	5 to 9	128 REALTY TRUST, ARTHUR L., / ROSSI, ARTHUR J. ROSSI &	1345 MAIN ST TOP FLR.	WALTHAM,MA 02451-162

ID	ADDRESS	BUSNAME	# Employ	OWNER	OWNMAIL1	OWNMAIL2
525	1345 Main St	Pager Express	10 to 24	128 REALTY TRUST, ARTHUR L., / ROSSI, ARTHUR J. ROSSI &	1345 MAIN ST TOP FLR.	WALTHAM,MA 02451-162
526	1484 Main St	Leslie Smith Div	1	CORRIS, EDWARD A. & / LESLIE,	29 MONTCLAIR ROAD	WABAN,MA 02468
527	1484 Main St	Corris Rental & Repairs	2 to 4	CORRIS, EDWARD A. & / LESLIE,	29 MONTCLAIR ROAD	WABAN,MA 02468
528	1484 Main St	Corris Line Video	5 to 9	CORRIS, EDWARD A. & / LESLIE,	29 MONTCLAIR ROAD	WABAN,MA 02468
529	1335 MAIN ST	MOBIL OIL CORP SS 353		MOBIL OIL CORPORATION / % MOBIL ADMIN. SER. CO. INC	P.O. BOX 290	DALLAS,TX 75221
530	1396 MAIN ST	WALTHAM CHEMICAL PUMP CO		1440 MAIN ST. ASSOC. NOM. TR., / CHARLES J. SCHREIBER JR.,	125 SUMMER ST, STE. 1640	BOSTON,MA 02110
531	1370 MAIN ST	M/A-COM INC Interconnect Business				
532	1370 MAIN ST	ADAMS RUSSELL CO INC CPD				
533	1440 Main St	Physician Insurance-Ma	5 to 9	1440 MAIN ST. ASSOC. NOM. TR., / CHARLES J. SCHREIBER JR.	125 SUMMER ST. STE. 1640	BOSTON,MA 02110
534	1440 Main St	Mass Medical Society	250 to 499	1440 MAIN ST. ASSOC. NOM. TR., / CHARLES J. SCHREIBER JR.	125 SUMMER ST. STE. 1640	BOSTON,MA 02110
535	1432 Main St 6	Thornton Associates	50 to 99	ROBINSON\1432 MAIN STREET, / LIMITED PARTNERSHIP,	125 CAMBRIDGE PARK DR.	CAMBRIDGE,MA 02140
536	1344 Main St	Antonell Associates Inc	2 to 4	1344 MAIN STREET TRUST,, / FRANK R. ANTONELL & CLIFF,	1344 MAIN STREET	WALTHAM,MA 02451-162
537	1432 Main St 1	Young Chang R & D Institute	25 to 49	ROBINSON\1432 MAIN STREET, / LIMITED PARTNERSHIP,	125 CAMBRIDGE PARK DR.	CAMBRIDGE,MA 02140
538	1430 Main St	Leadership Solutions	1	HOMO COMMENDATUS TRUST,, / RAYMOND D. JENNINGS, ET	40 WILLIAMS ST., G-50	WELLESLEY,MA 02481-39
539	1466 Main St	Entege	25 to 49	TWO/TEN INTERNATIONAL, / FOOTWEAR FOUNDATION,	1466 MAIN STREET	WALTHAM,MA 02453
540	1474 Main St	Bergeron Co	10 to 24	BERGERON, CHARLES J. & / ANDREA J.,	35 PINE HILL DR.	NEEDHAM,MA 02492
541	1380 Main St A	Source Technology	10 to 24			
542	1380 Main St	Network Consulting Svc	10 to 24			
543	1380 Main St	Associated Voice & Data Svc	10 to 24			
544	1290 Main St	Charter Bank	10 to 24	CHARTER BANK	BOX 1613	WALTHAM,MA 02454
545	1380 Main St Rear	Plywood Supply Inc	2 to 4			
546	1380 Main Rear	Philip Pagliazzo	1			
547	9 Green St	Waltham Heat Treat Co	2 to 4			
548	11 Green St	John's Bear Hill Auto Svc	1	JANO SHINORHOKIAN	5 HAWTHORNE STREET	BELMONT,MA 02478
549	25 JONES RD	CENTERLESS GRINDING CO INC		STONY BROOK ASSOC. LLC.	800 BOYLSTON ST. SUITE 400	BOSTON,MA 02199-8001
550	1344 Main St	Mc Donald Associates	1	1344 MAIN STREET TRUST,, / FRANK R. ANTONELL & CLIFF,	1344 MAIN STREET	WALTHAM,MA 02451-162
551	1344 Main St	Imajen Graphics Inc	2 to 4	1344 MAIN STREET TRUST,, / FRANK R. ANTONELL & CLIFF,	1344 MAIN STREET	WALTHAM,MA 02451-162
552	1352 Main St	Renzo Salon	2 to 4	REPOLE, FRANCESCO & / CAROL ANN,	192 SYLVIA STREET	ARLINGTON,MA 02476
553	17 Green St Fl 2	Com Net	5 to 9	GALVIN, ROBERT J.	81 BRETTWOOD ROAD	BELMONT,MA 02478
554	33 JONES RD	LIQUID METRONICS INC				
555	21 Green St	Proxima Upgrade Systems Inc	10 to 24	PAGLIAZZO, PHILIP	77 WESTERLY RD.	WESTON,MA 02493
556	22 Green St	Eastern Micro Devices	10 to 24	GALVIN, ROBERT J.	81 BRETTWOOD ROAD	BELMONT,MA 02478
557	22 Green St	Dynasel Associates	10 to 24	GALVIN, ROBERT J.	81 BRETTWOOD ROAD	BELMONT,MA 02478
558	33 Jones Rd	Swisher Hygiene	10 to 24			
559	40 Jones Rd	Central Machine Of Waltham Inc	10 to 24	WALSH, MICHAEL E. & STEPHEN P.	7 GRANT STREET	NATICK,MA 01760
560	1 SPENCER ST	BIRD RICHARD H CO INC				
561	43 Jones Rd	Weston Emergency Light Co	10 to 24	VENTNOR CORPORATION, /	17608 FONTICELLO WAY.	SAN DIEGO,CA 92128
562	49 JONES RD	STOHLER ISOTOPE CHEMICALS I		STONY BROOK ASSOCIATES LLC.	800 BOYLSTON STREET SUITE 400	BOSTON,MA 02199-8001
563	50 JONES RD	EXXON CO USA WALTHAM TER		STONY BROOK ASSOCIATES LLC., / % BOSTON PROPERTIES,	800 BOYLSTON ST. SUITE 400	BOSTON,MA 02199-8001

ID	ADDRESS	BUSNAME	# Employ	OWNER	OWNMAIL1	OWNMAIL2
564	50 JONES RD	EXXON OIL-WALTHAM TERMINA		STONY BROOK ASSOCIATES LLC., / % BOSTON PROPERTIES,	800 BOYLSTON ST. SUITE 400	BOSTON,MA 02199-8001
565	50 JONES RD	EXXON CO USA WALTHAM TER		STONY BROOK ASSOCIATES LLC., / % BOSTON PROPERTIES,	800 BOYLSTON ST. SUITE 400	BOSTON,MA 02199-8001
566	39 Green St	Associated Distribution	5 to 9	PAGLIAZZO, PHILIP &, / ROSE; H&UX,	77 WESTERLY RD.	WESTON,MA 02493
567	39 Green St	Sni Innovation	5 to 9	PAGLIAZZO, PHILIP &, / ROSE; H&UX,	77 WESTERLY RD.	WESTON,MA 02493
568	40 Green St	Route 128 Used Auto Parts	2 to 4	BVG TRUST, CHARLES P., / MANTENUTO, TR.,	40 GREEN STREET	WALTHAM,MA 02451-161
569	71 Colburn St	Stephen Navarro Painters	1			
570	92 Milton St	Titan Golf Tournaments	10 to 24			
571	295 Weston St	Pathways Healthcare Pharmacy	5 to 9	B & R REALTY TRUST, KENNETH, / R. REISMAN, TRUSTEE,	109 OAK STREET	NEWTON UP FALLS,MA 0
572	295 Weston St	Tech Aid	10 to 24	B & R REALTY TRUST, KENNETH, / R. REISMAN, TRUSTEE,	109 OAK STREET	NEWTON UP FALLS,MA 0
573	295 Weston St	Tac Temps	2 to 4	B & R REALTY TRUST, KENNETH, / R. REISMAN, TRUSTEE,	109 OAK STREET	NEWTON UP FALLS,MA 0
574	295 Weston St	Waltham Staffing Svc	5 to 9	B & R REALTY TRUST, KENNETH, / R. REISMAN, TRUSTEE,	109 OAK STREET	NEWTON UP FALLS,MA 0
575	305 Weston St	Woodside's Service Ctr	5 to 9	WOODSIDE, FREDRICK A. &, / ANNE E.,	51 WILLARD RD.	WESTON,MA 02493
576	305 WESTON ST	WOODSIDE CORP		WOODSIDE, FREDRICK A. &, / ANNE E.,	51 WILLARD RD.	WESTON,MA 02493
577	110 Florence Rd	Alarmguard	100 to 249			
578	360 Weston St	D G Technical Svc Corp	2 to 4			
579	185 Florence Rd	Marchitect Inc	2 to 4			
580	2 University Park	Chatham Capital Partners	2 to 4			
581	3 University Park 420	David J Coyle Agency	5 to 9			
582	3 University Park	Management Roundtable	10 to 24			
583	3 University Park	Financial Strategy Assoc	2 to 4			
584	3 University Park	Scheduling Systems Inc	10 to 24			
585	300 Florence Rd	Evergreen Center	10 to 24	EVERGREEN CENTER, INC. / C/O EVERGREEN CENTER	345 FORTUNE BOULEVARD	MILFORD,MA 01757
586	299 Florence Rd	Abra-Tek Inc	2 to 4			
587	125 Technology Dr	Parametric Technology Corp	500 to 999	WELLS AVENUE SENIOR, / HOLDINGS, LLC,	7 WELLS AVE.	NEWTON,MA 02458

APPENDIX C

COPIES OF PROJECT RELATED INVOICES



Charles River Watershed Association, Inc.
 2391 Commonwealth Avenue
 Auburndale, MA 02466-1773
 (617) 965-5975

Invoice

DATE	INVOICE #
09/30/2000	811

BILL TO
Edie Blackney, Contract Manager 2nd Floor 627 Main Street Worcester, MA 01608

CONTRACT NUMBER
99-06 SWT
PROJECT NAME

TERMS	DUE DATE	BILLING PERIOD	VENDOR ID #
Net 30	10/30/2000	7/1/2000 to 9/30/2000	0461369890007

ITEM	DESCRIPTION	QTY	RATE	AMOUNT
Savage - W...	Wages for Margaret Savage	5.75	37.17	213.73
Baskin - W...	Kathy Baskin Wages	6	71.23	427.38
Dews - Wa...	Wages for Ken Dews	3	27.63	82.89
7750 Projec...	project supplies	1	5.18	5.18
Reimb Group	color copies of maps for proposal		22.58	22.58
	Travel expense		7.88	7.88
	Project 99-06-SWT HDM Invoice 828		2,246.50	2,246.50
	Project 99-06-SWT HDM Invoice 842		3,978.60	3,978.60
	Total for these grouped Expenses			6,255.56
	Markup		60.00%	3,753.34
	Total for these grouped Expenses			10,008.90
	1Subtotal			10,738.08
Retainage	10% State Retainage		-10.00%	-1,073.81

Please reference this invoice with your remittance, thank you	Total	\$9,664.27
---	--------------	------------

Charles River Watershed Association, Inc.

2391 Commonwealth Avenue
 Auburndale, MA 02466-1773
 (617) 965-5975

Credit Memo

DATE	CREDIT NO.
10/01/2000	831

CUSTOMER
Edith Blackney, Contract Manager Floor 2 MA DEP 627 Main Street Worcester, MA 01608

P.O. NO.	PROJECT

DESCRIPTION	QTY	RATE	AMOUNT
Travel Expense Incurred, see enclosed receipt		7.88	-7.88
project supplies		5.18	-5.18
project supplies		22.58	-22.58
Indirect Expense		18.28	-18.28
Subtotal			-53.92
10% State Retainage		-10.00%	5.39
Credit for invoiced items not reimburse able per state			

Total

\$-48.53



Charles River Watershed Association, Inc.

2391 Commonwealth Avenue
Auburndale, MA 02466-1773
(617) 965-5975

Invoice

DATE	INVOICE #
11/30/2000	843

BILL TO
Edith Blackney, Contract Manager Floor 2 MA DEP 627 Main Street Worcester, MA 01608

CONTRACT NUMBER
SCEQE 14020125906
PROJECT NAME
Source Water Protection

TERMS	DUE DATE	BILLING PERIOD	VENDOR ID #
2% 10 Net 30	12/30/2000	10/01/2000 to 11/30/2000	0461369890007

ITEM	DESCRIPTION	QTY	RATE	AMOUNT
Reimb Group	<i>HSM # 360</i> Project 99-06-SWT-Sept		3,671.70	3,671.70
	Total for these grouped Expenses			3,671.70
	Markup		60.00%	2,203.02
	Total for these grouped Expenses			5,874.72
Retainage	10% State Retainage		-10.00%	-587.47

Please reference this invoice with your remittance

Total

\$5,287.25



Charles River Watershed Association, Inc.

2391 Commonwealth Avenue
Auburndale, MA 02466-1773
(617) 965-5975

Invoice

DATE	INVOICE #
03/31/2001	915

BILL TO
 Edith Blackney, Contract Manager
 Floor 2
 MA DEP
 627 Main Street
 Worcester, MA 01608

CONTRACT NUMBER
 SCEQE 14020125906

PROJECT NAME
 sceqe 14020125906

TERMS	DUE DATE	BILLING PERIOD	VENDOR ID #	
Due on rec...	03/31/2001	12/01/00 to 3/31/01		
ITEM	DESCRIPTION	QTY	RATE	AMOUNT
Reimb Group	Sub Contract invoice 918		765.90	765.90
	Sub Contract invoice 935		1,639.40	1,639.40
	Sub contract invoice 949		1,448.20	1,448.20
	Sub Contract Invoice 964		1,054.80	1,054.80
	Total for these grouped Expenses			4,908.30
	Markup		2,150.10	2,150.10
	Total for these grouped Expenses			7,058.40
	Subtotal			7,058.40
Retainage	10% State Retainage		-10.00%	-705.84

Please reference this invoice with your remittance, thank you

Total \$6,352.56