

Falmouth Hospital is a mid-size, nonprofit community-High Public Payer (HPP) hospital located in the Cape and Islands region. It is a member of Cape Cod Healthcare. Between FY11 and FY15, its inpatient discharges decreased 5.0%, compared with a median decrease of 9.5% among cohort hospitals. Falmouth Hospital earned a profit each year from FY11 to FY15, and earned a 9.3% total margin in FY15, compared to a cohort median total margin of 5.4%. It has consistently earned a higher total margin and operating margin than its peer cohort over this time period.

At a Glance

Overview / Size

Hospital System Affiliation:	Cape Cod Healthcare
Change in Ownership (FY11-FY15):	Not Applicable
Total Staffed Beds:	103, mid-size acute hospital
% Occupancy:	68.8%, > cohort avg. (65%)
Special Public Funding:	Not Applicable
Trauma Center Designation:	Not Applicable
Case Mix Index:	0.97, > cohort avg. (0.87); < statewide (1.00)

Financial

Inpatient NPSR per CMAD:	\$9,600
Change FY14-FY15:	-8.1%
Inpatient:Outpatient Revenue in FY15:	29%:71%
Outpatient Revenue in FY15:	\$95,597,075
Change FY14-FY15:	11.8%
Total Revenue in FY15:	\$159,068,858
Total Surplus (Loss) in FY15:	\$14,819,789

Payer Mix

Public Payer Mix:	71.6% (HPP* Hospital)
CY15 Commercial Relative Price:	1.52
Top 3 Commercial Payers:	Blue Cross Blue Shield of MA Harvard Pilgrim Health Care Tufts Health Plan

Utilization

Inpatient Discharges in FY15:	6,316
Change FY14-FY15:	0.3%
Emergency Department Visits in FY15:	34,800
Change FY14-FY15:	-1.9%
Outpatient Visits in FY15:	47,830
Change FY14-FY15:	-0.2%

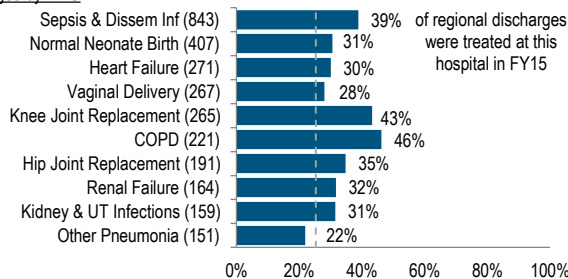
Quality

Readmission Rate in FY15:	15.8%
Change FY11-FY15 (percentage points):	-0.5%
Early Elective Deliveries Rate (Jan 2015-Jun 2016):	3.2%

Services

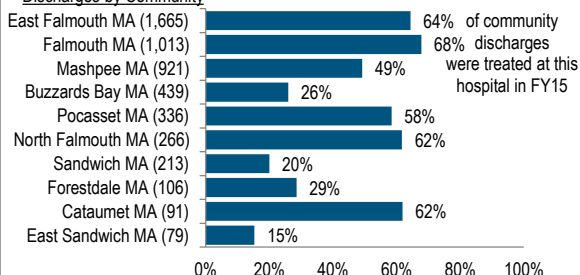
What were the most common inpatient cases (DRGs) treated at the hospital in FY15? What proportion of the region's cases did this hospital treat for each service?

Discharges by DRG



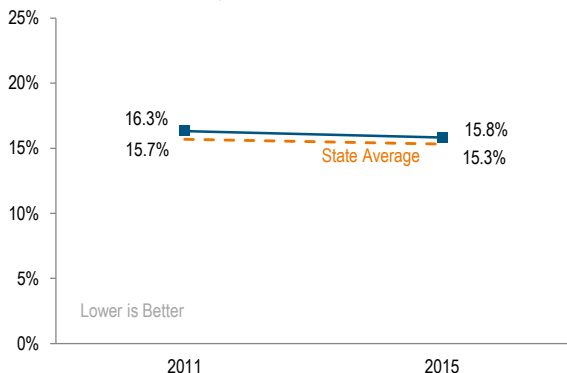
Where did most of the hospital's inpatients reside? What proportion of each community's total discharges was attributed to this hospital?

Discharges by Community

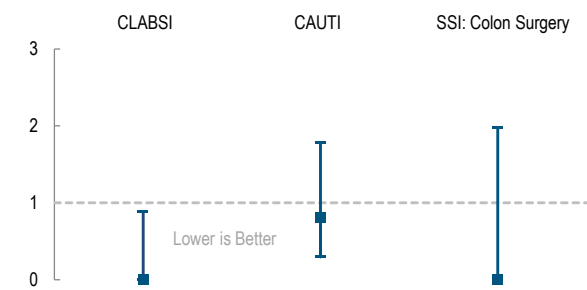


Quality

What proportion of adult patient discharges from this hospital resulted in a readmission at any hospital within 30 days, and how does this compare to the state average?



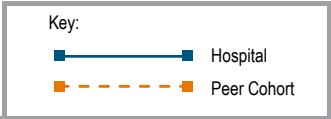
How many central line-associated blood stream infections (CLABSI), catheter-associated urinary tract infections (CAUTI), and surgical site infections (SSI) after colon surgery did patients get at this hospital compared to what was expected based on the hospital's characteristics and case mix?



For descriptions of the metrics, please see the technical appendix.

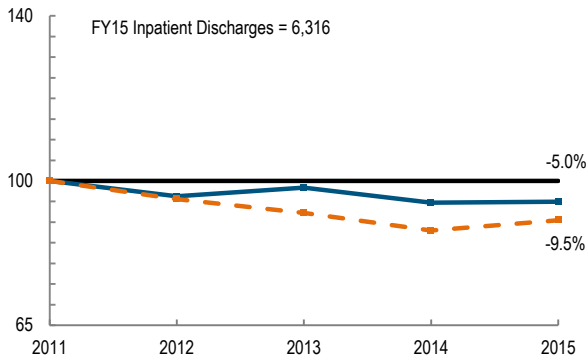
2015 HOSPITAL PROFILE: FALMOUTH HOSPITAL

Cohort: Community, High Public Payer

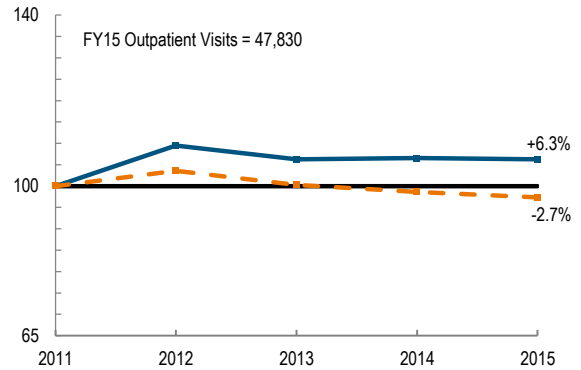


Utilization

How has the volume of the hospital's inpatient discharges changed compared to FY11, and how does this compare to the hospital's peer cohort median? (FY11=100)

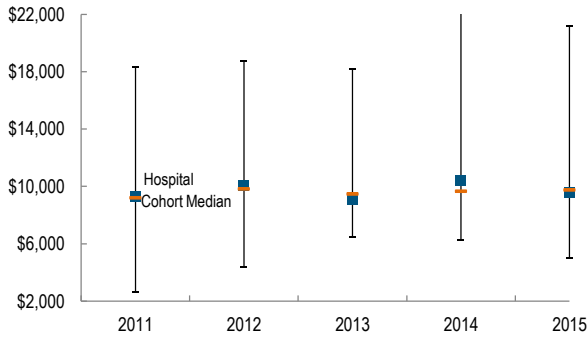


How has the volume of the hospital's outpatient visits changed compared to FY11, and how does this compare to the hospital's peer cohort median? (FY11=100)

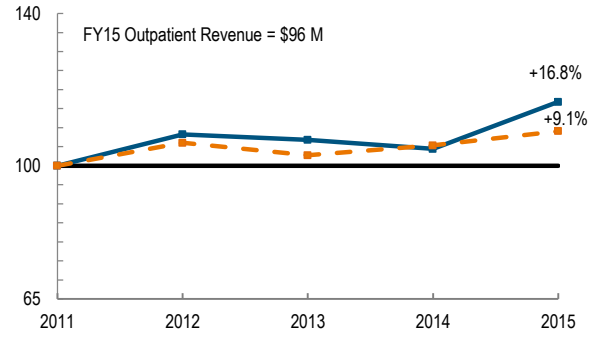


Patient Revenue Trends

What was the hospital's net inpatient service revenue per case mix adjusted discharge between FY11 and FY15, and how does this compare to the hospital's peer cohort median?



How has the hospital's total outpatient revenue changed compared to FY11, and how does this compare to the hospital's peer cohort median? (FY11=100)



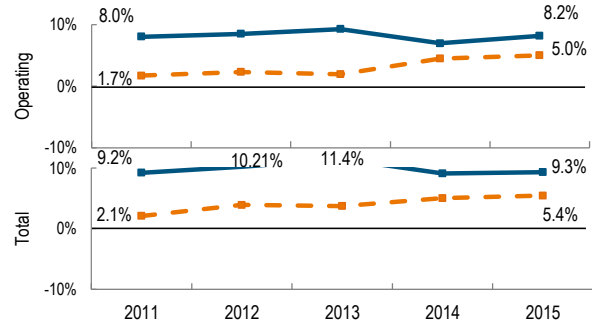
Financial Performance

How have the hospital's total revenue and costs changed between FY11 and FY15?

Revenue, Cost, & Profit/Loss (in millions)

FY	2011	2012	2013	2014	2015
Operating Revenue	\$ 147	\$ 156	\$ 150	\$ 155	\$ 157
Non-Operating Revenue	\$ 2	\$ 3	\$ 3	\$ 3	\$ 2
Total Revenue	\$ 149	\$ 159	\$ 154	\$ 159	\$ 159
Total Costs	\$ 135	\$ 143	\$ 136	\$ 144	\$ 144
Total Profit (Loss)	\$ 13.7	\$ 16.2	\$ 17.6	\$ 14.4	\$ 14.8

What were the hospital's total margin and operating margins between FY11 and FY15, and how do these compare to the hospital's peer cohort medians?



For descriptions of the metrics, please see the technical appendix.

* High Public Payer Hospitals (HPP) receive a minimum of 63% of gross patient service revenue from public payers.