



RANGER DISPATCH

Bureau of Ranger Services

Summer 2010

Volume 5, issue 1

Annual Meeting Recognizes Outstanding Seasonal Staff

Table of Contents

Annual Meeting Recognizes Outstanding Seasonal Staff	1
At Long Last...A Visitor Center on Georges Island	2
From the Bayou to the Barrens	3
A Century of Excellence	4
Team effort equals success at Great Brook Farm State Park	5
DCR brings professional certification course to ITC 2010	6
Gardener Heritage Visitor Center	8
Berkshire Orchids	9
Crossing Guard Program	10
State House	11
Chief's Corner	12



The Bureau of Ranger Services convened at Borderland State Park on August 24th with 60 State Park and Urban Park Rangers, interpretive staff and bureau staff present. After a welcome by Chief Curt Rudge and Deputy Chief Chris Williams,

business meetings were held by each branch where training, summer highlights, issues, and future plans were discussed. The chiefs were left with a list of suggestions, needs, and concerns to address in the months to come.

The high point of the day was the recognition of several seasonal staff who excelled in their jobs this summer. While many were nominated, the following were the top picks in their categories:

- *Outstanding New Interpreter:* **Meshell Bordeleau, Tolland State Forest**
- *Excellence in Interpretation:* **Judy Perry, Myles Standish State Forest**
- *Outstanding Professionalism in Service:* **Bob Anderson, Harold Parker SF**
- *Innovation in Interpretation:* **Travis Worthley, Gardner Heritage State Park**
- *Dedicated Service:* **Steve Antil, Pittsfield State Forest**
- *Team Interpretation Award:* **Boston Harbor Islands**
- *State Parks Ranger of the Year:* **Liann Graf, Harold Parker State Forest**
- *Urban Parks Ranger of the Year:* **Chris Cohen, South Region**
- *Supervisory Ranger of the Year:* **Dennis 'Mike' Doyle, Boston Harbor Islands**



Boston Harbor Islands Ranger staff sharing their award with Regional Coordinator, Deni Sarno-Bucca. ☞

AT LONG LAST...A VISITOR CENTER ON GEORGES ISLAND

BY JESSICA RENEHAN

In 1970, Fort Warren was proudly declared a National Historic Landmark cementing its place among America's most significant places. The fort itself earned the reputation as being one of the most humane Confederate prisoner of war facilities during the Civil War. Although made out of granite, the fort has been molded by the needs of a nation and by the changing technology of its military. Although declared "excess to the needs of the army," the island continues to transform and receive recognition, most recently as a state of the art, 'green', visitor center. On July 14th, 2010, Governor Deval Patrick, DCR Commissioner Rick Sullivan, and Secretary of the Office of Energy and Environmental Affairs, Ian Bowles, welcomed the public, DCR staff, and park partners to the new Georges Island Visitor Center.

The stories of Fort Warren have been passed down by MDC, and now DCR staff for generations, but now the memories of the men who trained and served here are forever preserved in several exhibits.

In an exhibit panel describing life at the fort, Winslow Rollins, a volunteer soldier for the Union who was stationed at Fort Warren, has letters to his wife transcribed. The replica letter reads "I hope you will always dream of me for I think of you every night my Dear. It will be a happy day When my time is out here." In an ironic twist of linguistics, Rollins was looking to return home to his wife and to get off the island, and yet his message could be taken in a different context now. "It will be a happy day When my time is out here." Every day hundreds of visitors from downtown Boston escape the city and visit Georges Island to experience history and step back into nature. Inner city children, families, camp groups, tourists, and students venture out by boat and arrive at Georges Island to explore, recreate, picnic, and relax. And now, most importantly, they can come here to learn.

Winslow Rollins is one of many stories preserved in the Visitor Center. Along with personal recollections, displays at the new visitor center remind us of conditions at the fort, through a dining room table set for six men, officers, soldiers, and prisoners alike displaying the variety of food provided on the island. The exhibit captures the essence of the fort's humane treatment. "Officers and political prisoners often ate sumptuously, particularly at the beginning of the war. Despite their differences, everyone was able to eat a full meal—something that was rarely the case in cash-strapped Confederate camps." Life at Fort Warren is also colorfully and artistically captured in small



lockers displaying historic artifacts from the Civil War which correlate to small clocks on the wall, allowing the visitor to understand what soldiers at the fort experienced at various times throughout the day.

A visitor to the museum can read the words of the men living here, see the bunks that they slept in, hear the sounds of the guns they fired, and touch the historic projectiles that were stored at the fort. There is even a 19 foot long Nike Ajax missile hanging from the ceiling, a weapon which would eventually be the closing chapter of the strategic defense in Boston Harbor.

The eight minute film that is featured in the visitor center entices the imagination and recreates the mood and essence of the fort throughout its 150 years. Perhaps the narrator of the film sums it up best. "For 100 years, Fort Warren protected the people of Boston but now it is the people who continue to preserve, protect, and continue its legacy." *CR*

FROM THE BAYOU TO THE BARRENS

By Judy Perry

With the gulf oil disaster fading from the news, concern grows that our collective memory will fade along with the reduced coverage. How to keep this disaster top of mind without adding to oil spill fatigue, and how to incorporate events in the Gulf of Mexico with the ecosystem of Massachusetts' state parks presents a challenge for Interpreters. Yet, after attending the Project Wild training led by Amy Wilmot, it was apparent that the connection could be made with a simple feather. And, with what better messengers than the future stewards of our environment – Junior Rangers?




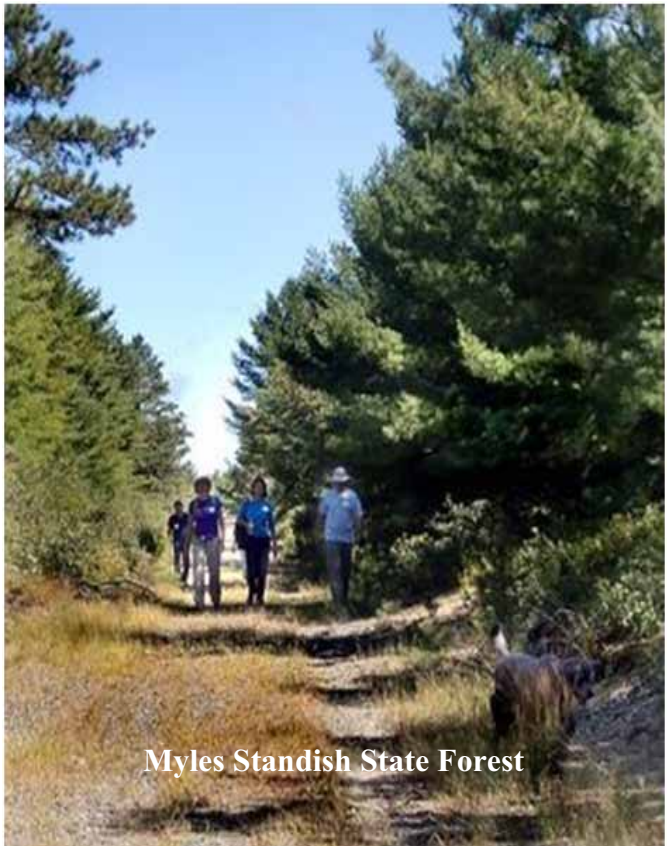
To energize and engage the children, the Junior Ranger program started with a quarter mile walk to a wetland area of Myles Standish State Forest, where frogs, fish, insects, turtles, and birds frequent. We discussed the importance of wetlands for the plant and animal life of the area, and on the return trip to the Interpretive Center, they were asked to imagine how pollutants might impact the life of specific animals such as ducks and swans. As we walked, they eagerly shared stories of cool places they had visited and animals they had seen, each storyteller trying to surpass the other.

Upon our return, we followed the Project Wild “No Water Off a Duck’s Back” activity that Amy had led at the training session. Each Junior Ranger ‘wannabe’ was given a healthy feather which they took on a journey through water, then oil, then dishwashing liquid for cleansing. While some feathers finished the journey suffering little damage, others were destroyed, clearly illustrat-

ing the devastating effects of the oil spill. Toward the end of the activity, the parents were as emotionally engaged as the children!

To connect this program with Myles Standish State Forest, we recalled our walk to the local pond, discussing how various pollutants make their way to local freshwater ponds and how they impact the plants and animals that rely on the Pine Barrens ecosystem for survival.

Wrapping up “No Water Off a Duck’s Back,” the children were asked what they could do to help limit pollution and its effects on the local ecosystem. They eagerly answered to pick up litter, to talk to their parents, to be more careful themselves. And, one future steward replied that we could do all those things plus, “spread the word by telling my friends, and then they can spread the word.” Connecting the Bayou to the Barrens, Project Wild was a success. 



Myles Standish State Forest

A Century of Excellence: DCR's Esplanade Celebrates 100th Anniversary

By Steven Gilchrist



2010 marks the 100th anniversary of DCR's Charles River Esplanade. As a fourth year seasonal Ranger at the Teddy Ebersol's Red Sox Fields which are located on the Esplanade, I have learned about the park's several unique attributes. The Esplanade is a well known and popular location that is used for a variety of recreational activities.


The Esplanade is a unique place because it has several historical attributes portraying the rich history of the city of Boston and the DCR. The term *Esplanade* - which was first used in 1910, is a French word that means "promenade along a shore." The Esplanade stretches approximately 3 miles along the Boston side of the Charles River, from the Boston University Bridge to the Museum of Science. The Esplanade contains: 6 miles of walkways & bikeways, 3 boathouses, an athletic field complex, 6 wooden docks, and over 1,900 trees. The Esplanade is also the location of the Community Boating Center – the oldest public boating program in the United States.

Still, the Esplanade has even more charac-

teristics that make it an interesting park. The Esplanade contains 10 memorials and statues. Four statues of notable American civil servants surround the Hatch Shell oval. The statues depict: Charles Devens, George S. Patton Jr., Maurice Tobin, and David Ignatius Walsh. There are also memorials dedicated to Oliver Wendell Holmes Sr. and Charles Eliot.

Eliot was an early advocate for preserving public open spaces in the greater Boston area. In the 1890s, Eliot and his colleague Sylvester Baxter, a journalist, were concerned about the polluted water of the Charles River Basin. Eliot once commented about his vision for the Charles River Basin, saying: "... the metropolitan district is now in a position to make for itself, whenever it may so desire, a river park which with its bordering drives, will extend six miles west from the State House. The broad Basin, surrounded as it will be by handsome promenades, is destined to become the central 'court of honor' of the metropolitan district..." After Eliot's untimely death in 1897, another landscape architect Arthur Shurcliff – Eliot's protégé, devised more ideas to improve the area known today as the Esplanade.

The Edward A. Hatch Memorial Shell is the most visible structure on the Esplanade. The "Hatch Shell" as it is commonly referred to, first opened in 1940 and today it is the location of charity events, concerts, and social gatherings.

In addition to several events held throughout the year, the Esplanade is listed as one of DCR's Healthy Heart Trails. Avid walkers and bike riders frequent the Esplanade regularly. The Dr. Paul Dudley White bike path is named after Paul Dudley White, a cardiologist and former physician to President Dwight D. Eisenhower. Dr. White was an early advocate of bicycle access on the Esplanade. In 1960, bicycles were first permitted on the Esplanade. On September 25, 2010, at the Hatch Shell, the Esplanade Association will be hosting the Esplanade Centennial Gala, honoring people who have made significant contributions to the Esplanade. 

Great Brook Farm State Park

By Tyler Brien



Great Brook Farm State Park

Just like many DCR parks and properties, Great Brook Farm State Park has a lot to offer its visitors. This multi-use facility invites guests to enjoy many recreational activities, such as dog walking, hiking, biking, and horseback riding. Water sports such as kayaking and canoeing on scenic Meadow Pond are also encouraged. During the winter, groomed trails are frequented by cross-country skiers. There are approximately 20 miles of trails that visitors enjoy throughout the year.

The unique experience of touring one of the only State-owned dairy complexes in the country is also available on weekends and by reservation. The Duffy family has been operating the dairy since 1987. The ice cream stand at the farm complex offers 67 flavors and is one of the most popular features of the park.

This summer, a new activity has been introduced to the Great Brook Farm State Park repertoire. Beginning in July, the park staff has conducted four 'Learn to Fish' programs for children who are eager to learn hands-on fishing techniques. Four more have been scheduled for the months of September and early October. The

events have gone off without a hitch and fun has been had by all, including the staff! We have all shared similar sentiments that seeing children having memorable experiences in our parks has been very gratifying. The success of the programs to date was made possible by the work of Interpreter Lesya Struz, who created flyers, press releases, and sign-up sheets. Park Supervisor Steve Carlin, and Seasonal Laborers Paul Lanoue and Erika Baker were instrumental in tackle set up, baiting of hooks, and releasing of caught fish. At the beginning of each event I provided an introduction to the park, park staff, fishing regulations, fishing equipment, techniques and safe fishing practices. I too assisted with equipment set-up, baited hooks and released fish. Northeast Region Ranger Jennifer Stowe got her hands dirty as well. She baited hooks, released fish and also took pictures. If ever there was an example of DCR team work, this would be up there with the best. ☘



ITC 2010: DCR's Ranger Services Presents Professional Certification Course

By Joseph Harris

The Bureau of Ranger Services incorporated into the fabric of this year's Interpretive Training Conference (ITC) a professional interpretive certification course administered by the National Association for Interpretation (NAI). Fifteen members of DCR's interpretive and ranger staff completed NAI's 32-hour Certified Interpretive Guide (CIG) course. The course required all participants to complete a literature review of five interpretive texts and develop and present a 10-minute program exhibiting the skills and concepts learned throughout the course.

NAI offers many professional certification programs that encourage networking, training, and collaboration among its members, all in support of the association's mission to inspire leadership and excellence while advancing heritage interpretation as a profession, according to the association's website.

Reactions from course participants were overwhelmingly positive. "CIG was a great experience," said Joe Harris, visitor services supervisor at Pilgrim Memorial. "Since completing the course, I've noticed a marked difference in the way I approach program development at the park, and the response from the public has been very positive." Justin Gonsor, interpreter at Quabbin Reservoir, said the program has helped him to connect with the public more effectively. "I learned how to be more interactive with my audience when giving a program and how important it is to cater your program to different audiences," said Gonsor.

Several members of the ITC Planning Committee have received positive feedback about the certification course from program participants. Tim Rayworth, who chaired this year's ITC, has heard from several participants who felt the workshop was a worthwhile experience. "One person shared that her confidence level has increased as a result of the training," said Rayworth. "In another instance, the training helped secure a better opportunity for a participant within the agency. On the whole, people seem pleased with the outcomes of the CIG training already." Amy Wilmot, regional interpretive coordinator for the

Southeast Region, has also heard positive feedback from participants. "I have two interpretive staff on my roster who took the CIG course during ITC," said Wilmot. "They have indicated that the course was challenging but very worthwhile in terms of being able to apply concepts and techniques to their daily interpretive work with DCR."


Barbara Buls, regional interpretive coordinator for the Northeast Region, has already seen a change in the quality of programs offered by CIG course participants. "After training," said Buls, "I attended three programs by the interpreters who went through certification in my region. It was obvious from the execution of the program the effect that the CIG training had on their approach, program development, and delivery. It was wonderful to see the direct and immediate effect of the training."

According to Rayworth, "The incorporation of the CIG workshop for seasonal interpreters was a first step in a larger vision that includes additional training and system-wide interpretive planning." Nancy Church, visitor services supervisor at Waquoit Bay, said, "Exposing more employees to this training can only improve the interactions with visitors to our parks."

Both Rayworth and Wilmot stressed the importance of interpretation as a resource-management tool. "The long view of interpretation in DCR relies on the understanding that interpretation is a tool to meet management objectives," said Rayworth. Wilmot said that by offering courses like CIG, DCR indicates "that the role of the interpreter is important to public resource management" and that ensuring high quality and appropriate interpretive program development is a priority for the department. "Long-range, we are hoping there will be a shift in perception regarding interpretation," said Wilmot. "It comes back to understanding the meaning of interpretation – *interpretation is a mission-based communication process that forges emotional and intellectual connections between the interests of the audience and the meanings inherent in the resource.*"




the Central Region; Interpreter Betsy Cormier from Otter River State Park; Interpreter Henry Darrell from Borderland State Park; Interpreter Justin Gonsor from the Quabbin Reservoir; Visitor Services Supervisor Joe Harris from Pilgrim Memorial State Park; Interpreter Steve Linscott from *Mt. Greylock* State Reservation (not pictured); Interpreter Jenna Perschka from *Wells* State Park; Ranger Rosie Pula from Forest & Parks

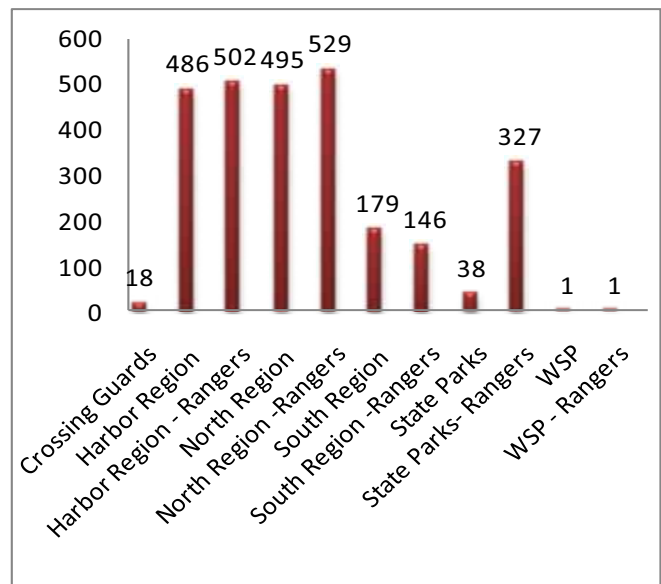
CIG Class of 2010: Interpreter Bob Anderson from *Harold Parker* State Forest; Brook Farm State Park; Interpreter Donna Sudak from *Maudslay* State Park; and Interpreter Jim Terruso from *Mt. Tom* State Reservation. 

State House Base support to DCR

By Ranger John Garvey

DCR's only 24-hour Communication Center known as State House Base is staffed by DCR Park Rangers. This center serves as a communication link between the DCR, members of the public, and federal, state and municipal agencies. The communication moved through State House Base has been a key element in the management of significant events that have taken place on DCR properties. It also acts as a portal of communication among regional staff to help support their efforts in managing DCR facilities and is utilized 24-hours a day. Also, State House Base and the newly created MassDOT routinely communicate with each other regarding incidents that affect each agency's property. In this quarter, the State House Base has handled 2,722 calls relating to DCR parks and properties. 

March 2010 thru August 2010



Collaborating with the Community: Gardner Heritage State Park Visitor Center Re-Opens

By Travis Worthley

When two new seasonal employees first entered into what was to become the re-opened Heritage Visitor Center in downtown Gardner, it became apparent that this was going to be no “walk in the park”. However, with a little hard work, the Visitor Center has had a season marked by accomplishment. This has been largely due to the success of its programming. The facility is now open to the public providing an extensive display of exhibits and a variety of programs for all interested visitors. One can imagine that it has been difficult to create a buzz around a park that has been closed for 8 years, especially with limited funds. Despite the challenges, all programs have been well attended and successful. The key to this success has been in the steady collaboration with the community.

It is important especially in times of economic hardship to engage the community as resource. Successful programs can often be given utilizing the services of local experts and volunteers at little or no cost. With proper coordination, these public offerings can be equally if not more meaningful to visitors because they foster a sense of community. It gives people that already have a vested interest in the park the opportunity to become a resource by allowing them to participate in a tangible way.

This summer, at no cost to the park or it’s visitors, Gardner Heritage State Park has presented two ongoing art exhibitions (with live music), a chair fiber rushing demonstration, and multiple presentations including a historical murder mystery and a discussion on the City of Gardner’s namesake. Exploring



the limits of programming, the park has also offered a blacksmithing demonstration (with over 300 people in attendance) and an open mic event for all who would like to participate. The programming success demonstrates that giving the reins to the community gives them a stronger concern for park resources, and cultivates success for DCR in the future. This is just one example of how, with good old-fashioned hard work by a good team of DCR employees and a constant collaboration with the community, we can do a lot with a little. ☺

Berkshire Orchids

By Tierney Rosenstock

For many people the word orchid brings to mind an exotic image: one of mysterious dark, steamy jungles far different from our own forest ecosystems. Or, perhaps, the word orchid conjures up an image of those vexing plants we keep buying at the Home Depot only to kill within a month's time. A smaller portion of us may be familiar with the Pink Lady's Slippers- our very own native orchids. Most people do not realize, however, that these Pink Lady's Slippers represent only one species among 220+ species of orchids native to the United States. Massachusetts alone is home to 40+ species! My goal is to find and document (using GPS) as many orchids in DCR's Western Region as possible. The following paragraphs will share and describe the species of orchids I have come across during my foot patrols as a Western Regional Ranger.

Pink Lady's Slipper or Moccasin Flower, (*Cypripedium acaule*), is one of the most familiar orchids to the general public and brings a sense of magic when encountered. These plants range from 10-30 cm high with single flowers between 6 and 9 cm long that range from light pink to dark magenta. A pure white form also exists. The basal paired leaves are ovate, light green, and slightly pubescent (hairy). *C. acaule* blooms from

mid May through Mid July, depending on the region and elevation. I observed plants blooming this year starting on May 22nd. The plants tend to grow in mixed and coniferous forests with acidic soils.



Downy Rattlesnake Plantain or Downy Rattlesnake Orchid, (*Goodyera pubescens*), are better known for the leaves than for the flowers. Among the three species of *Goodyera* known to grow in Massachusetts, this plant grows low to the ground, maybe 1-2 cm high, and acts much like a ground cover when in dense patches. The leaves are ovate, dark green with silver/white netted vein patterns, densely pubescent, and are arranged in rosettes. The flower spikes are 16-

25 cm with between 2 and 70 white flowers 3-5 mm long. I have not personally observed these plants in bloom, but the plants typically bloom in mid August. *G. pubescens* prefer oak-pine forests, but can be found in many mixed forests with acidic soils.

Little Club-spur Orchid, (*Plantanthera clavellata* var. *clavellata*), was thought to be absent from the Berkshires in the early to mid 1990s, but is now known to grow in all Massachusetts counties. These plants range from 10-20 cm with spikes of 12-30 green to straw yellow flowers (the ones I found were closer to white and may be a white flowered form) 4-7 mm long. These little flowers are interesting because they have a long spur (the extension behind the flower) that may contain nectar for the pollinator (probably a moth). The leaves are lanceolate and mostly hairless. These plants tend to grow in sunny or shady wet habitats and seem to be frequent in disturbed areas.





Plantanthera psycodes

Small or Lesser Purple Fringed Orchid, is one of my favorites (I'm very fond of anything purple) and I was privileged to stumble upon my first sightings. The plants range from 30-110 cm high with spikes of 20-135 pale lilac to pink (four forms are documented based on color, presence of a spur, and presence of lip fringing) 5-10 mm flowers. The leaves are lanceolate and hairless. *P. psycodes* prefer a variety of damp habitats, including meadows, woods, stream sides, and swamps. The plants I found initially were growing on a Beech dominated hillside with an eastern aspect.

Orchids are a fascinating component of nature and

have brought rich excitement to my life. Hopefully, this introduction, albeit brief, provokes similar fascination in the readers of this article.

Please remember orchids are sensitive and can decline from slight ecosystem disturbances. With this in mind, tread lightly and only share orchid locations with environmentally conscientious people, so these treasures of nature can be conserved for future generations.

Selected References:



- **Brown, Paul Martin. 1997.** *Wild Orchids of the Northeastern United States: A Field Guide.* Ithaca, New York: Cornell University Press, 236 p.
- **Brown, Paul Martin. 2003.** *The Wild Orchids of North America, North of Mexico.* Florida: University Press of Florida. 236 p.
- **Brown, Paul Martin.** *clavellata* [electronic mail on the Internet]. Message to: Tierney Rosenstock. 2010 July 23, 6:31 pm [cited 2010 July 29]. [one paragraph]. ☞

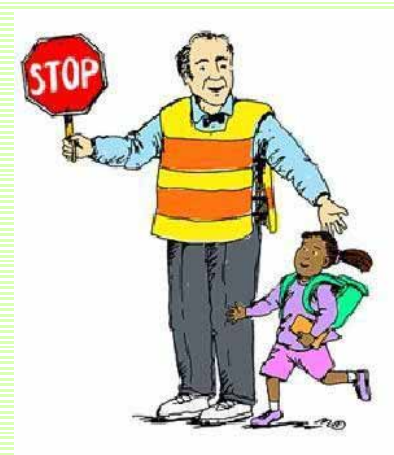
Crossing Guard Program

By Christine Kurker, Crossing Guard Supervisor

The Bureau's Crossing Guard Program, within the Urban Parks, places Crossing Guards along our roadways to ensure safe passageway for school-aged pedestrians. Currently the program has 40 Crossing Guards covering 26 different locations throughout school zones in Boston and Greater-Boston. The DCR has crossings as far south as Quincy and as far north as Melrose.

All Crossing Guards new to the program recently participated in a 4-hour training course conducted by the Massachusetts State Police. Some topics included how to deal with angry drivers, drivers who do not stop at red lights, and drivers who speed. Also discussed was how to communicate with students who do not want you to cross them or those who do not use the crosswalk. The proper techniques of traffic control were also demonstrated and practiced.

On average, Crossing Guards work approximately 10 hours per week, have holidays and school vacations off, and do not work over the summer months. For more information on our program, please call 617-626-1421. ☞



State House Ranger Detachment

By Sean Dowd



The hallowed halls of the Massachusetts State House are not exempt from mother nature's fury. Oppressive humidity recently gave way to torrential rainfall *inside* the Capitol. A sudden deluge resulted on all floors of the State House annex from an ongoing roofing project and a mid-afternoon thunderstorm. DCR Rangers scrambled to reroute the soggy public attempting to access the State House as aged elevator banks shorted out and rivers of water made already slicked marble floors and staircases even more treacherous.

DCR Rangers played a key role in averting the theft of a quantity of copper sheathing from the State House roofing project. A group of legislators returning from an event were stopped in traffic on a street adjacent to the State House when they observed two laborers "dumpster diving". As the stunned lawmakers looked on, the workers moved the purloined copper from a salvage dumpster into the trunk of a car parked nearby. The legislators were quick to notify DCR

Rangers who through the use of video surveillance equipment were able to identify the culprits. The workers were consequently dismissed from their jobs at the State House and the stolen materials recovered.

DCR Rangers are credited with affecting the capture of four trespassers on State House grounds in July. The arrests resulted when vigilant night shift rangers observed four individuals inside a fenced in park at around 2 o'clock in the morning near a darkened State House entrance. With state police responding, rangers were able to verbally contact the suspects who immediately attempted to flee in different directions. Rangers were able to catch up with the fleeing suspects and keep them

occupied until police arrived. A subsequent search of the park revealed a suspicious package left on a staircase which required several city blocks to be closed off for some time. Police in the course of their investigation, were presented false identification by the suspects. All four parties were placed under arrest for trespassing after giving inconsistent stories and admitting to having handled the package. The all clear was finally given by the bomb squad at nearly 4 am as the first of the day's employees began arriving for work. ☺



Chief's Corner

By Curt Rudge, Chief Ranger

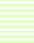
It seems impossible for me to have a conversation with anyone from our bureau lately without having the topic of layoffs somewhere interjected into the conversation. There is no doubt that budget reductions and their impact on our agency, and our bureau in particular, is foremost on many minds. I have no personal knowledge of layoffs in our future but, as always, have great confidence in the critical services that our bureau staff provides. Enforcement, emergency medical services, emergency management, education and interpretation, search and rescue, and resource protection are just a few of the many aspects of the bureau that make visitors safe and informed as they venture into our areas.

It has often been said that operating parks without interpretation is like inviting people into your home and just getting up and leaving. Our public is definitely our best resource for protecting and preserving those resources entrusted to us and the ranger bureau is certainly out front promoting stewardship through all the programs and opportunities it creates and provides. Whether it is through formal interpretation or recreational programming, teaching the public to value our public lands and creating a link between those resources and our visitors so they in turn will care for them is fundamental in furthering the mission of DCR. A well informed, supportive public is our best chance at a bright future.

Enforcement through education with the backup of more punitive techniques is a unique and very successful method of supporting our regulations, managing the behavior of visitors, and protecting our resources. Rangers provide a full time presence in our facilities to maintain regulation compliance in a

way that traditional "police" rarely understand. It is not unusual for offenders to not know the regulation even exists or what impact the violation has on the resource. Therefore, it's not enough to simply punish regulation offenders, but we must always strive to teach the offender the impacts of their actions and moreover, encourage them to support the regulations in the future.

Bureau staff is highly trained to deal with all levels and types of incidents that occur on DCR properties. They are prepared to carry out the emergency service, supervise the response or provide on scene incident management as required. Whether it is a hazardous waste spill, water emergency, or lost person, rangers are prepared to respond. Additionally, rangers are a significant component of DCR's MEMA emergency management response team that mans the ESF – 3 function at 'the bunker' during major emergencies.

As I noted in the beginning of this message, I have no knowledge of what lies in the future for any of us, but of one thing I am sure. The services that the Ranger Bureau Staff provide are integral to the safety of our visiting public and protection of our resources. If the question is ever asked if ranger services are necessary, I certainly hope, for example, they query Mr. John Schumacher who, as a result of the presence, training, and quick action of Ranger Jason Hunt, is alive today. Ranger Hunt Responded quickly and deployed a defibrillator to save the life of Mr. Schumacher, who had a heart attack while visiting Mount Wachusett. 

We want to hear
from you!!

Comments, thoughts and suggestions are always welcome, as are contributions. If you have something you'd like to share in this Newsletter, please send it in!

Bureau of Ranger Services, Suite 800
Attn: Claudia Gomez
251 Causeway St.
Boston, MA 02114

Or e-mail to:

Claudia.gomez@state.ma.us

dcr
Massachusetts



It's Your Nature